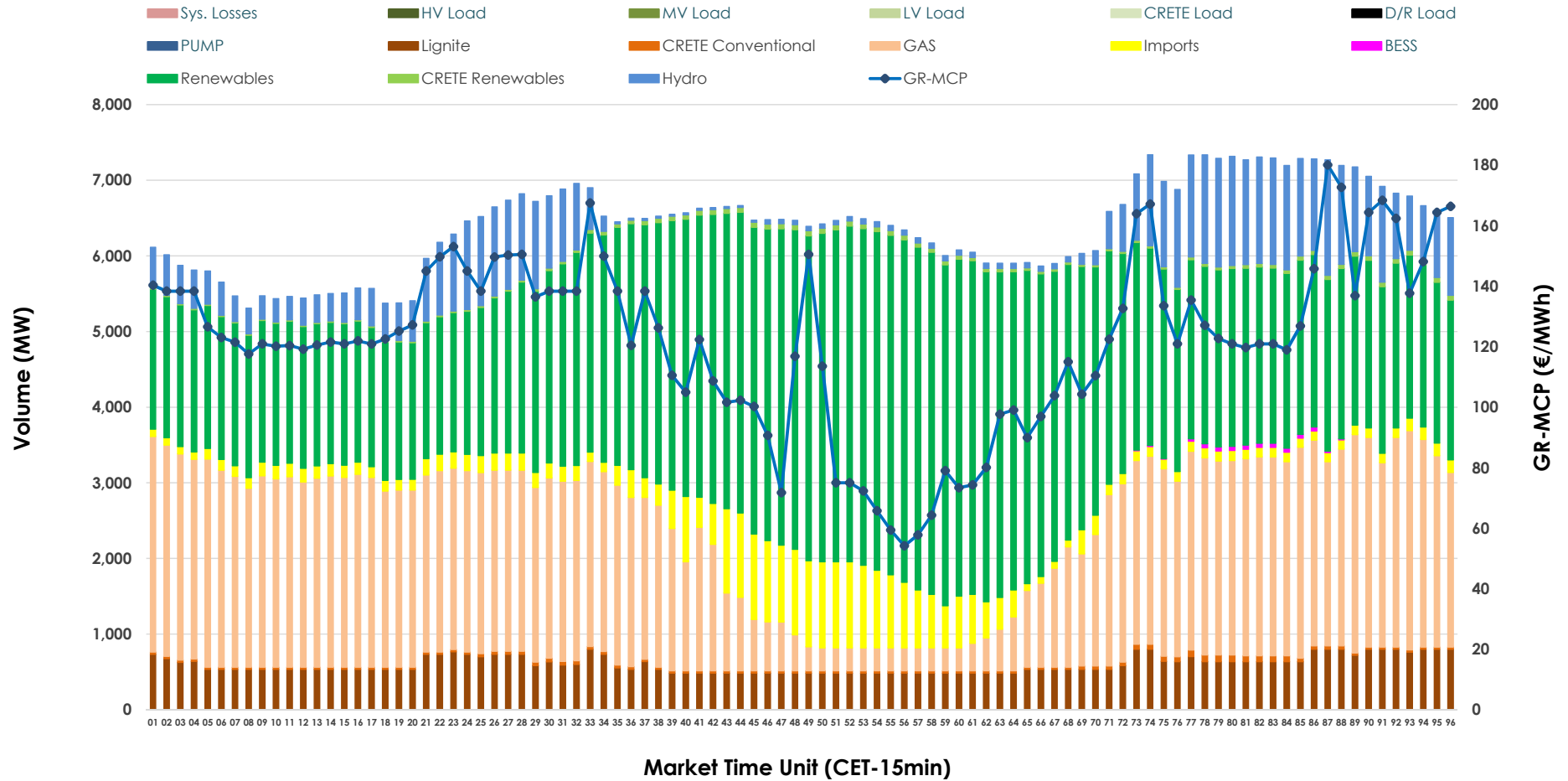


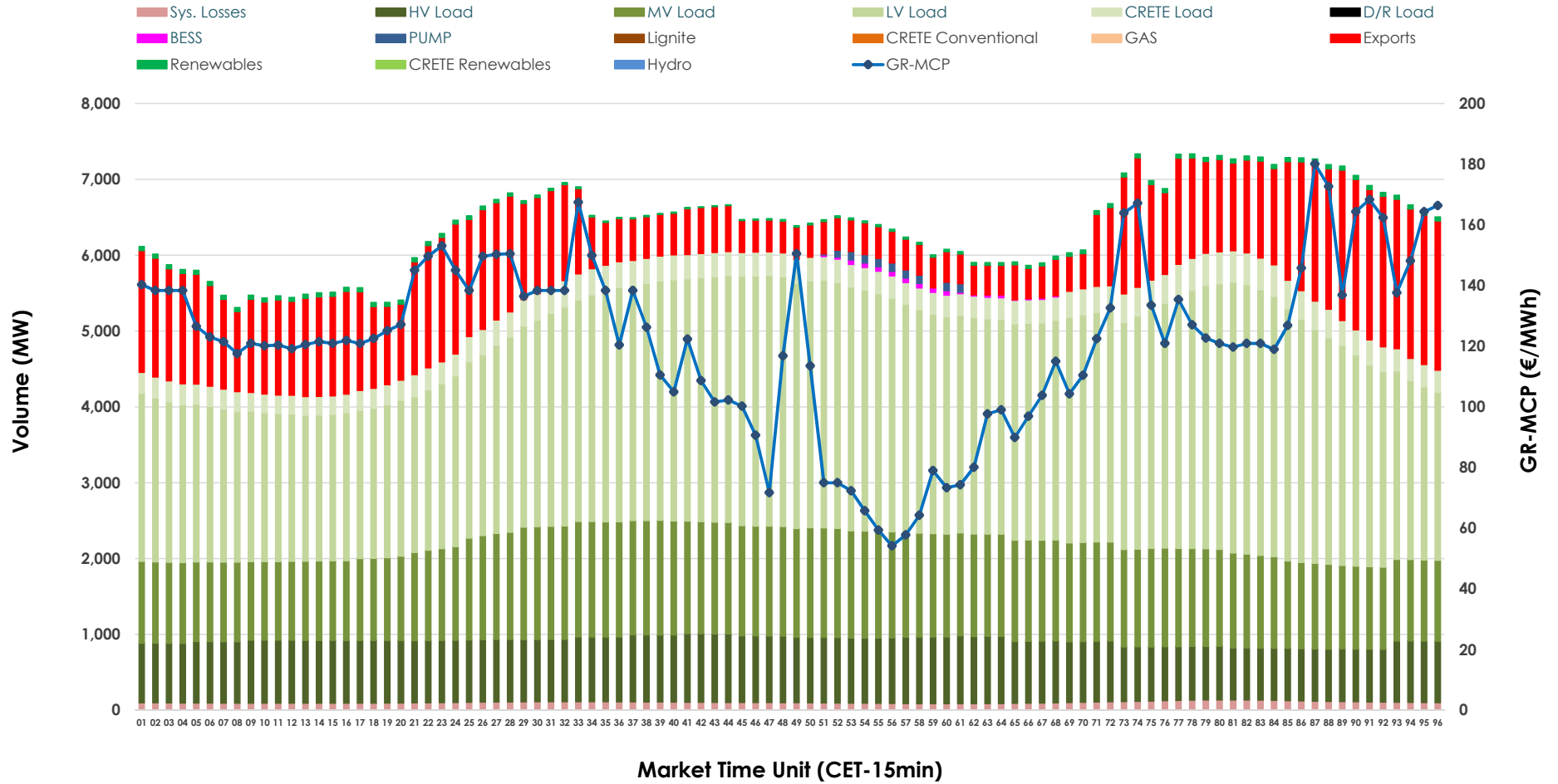


# Day-Ahead Market Outlook

08.05.2026 Day-Ahead Market - Sell



### 08.05.2026 Day-Ahead Market - Buy



### GR Bidding Zone Weekly Figures

Delivery Day	02.05	03.05	04.05	05.05	06.05	07.05	08.05
	↗ 13%	↗ 11%	↗ 45%	→ 0%	↗ 4%	↗ 17%	↗ 1%
<b>Avg.MCP (€/MWh)</b>	61.40	68.20	98.94	98.73	103.01	120.39	122.10
<b>Max.MCP (€/MWh)</b>	182.68	172.97	263.41	257.05	205.60	176.89	180.08
<b>Min.MCP (€/MWh)</b>	-5.00	-10.25	-0.10	-0.01	0.00	11.00	54.19
	↗ 4%	↘ -2%	↗ 4%	↘ -1%	↘ -3%	↗ 1%	↗ 3%
<b>Tot.Vol(GWh)</b>	304.64	299.12	311.19	307.32	296.65	298.95	307.30

### Trades by Order Type

Delivery Day		02.05	03.05	04.05	05.05	06.05	07.05	08.05	
<b>Ord Price Type</b>		<b>Sell &amp; Buy Trades in (GWh) per Price Type</b>							<b>(%)</b>
<b>PPT</b>	(S)	77.082	71.520	59.921	56.144	52.370	54.293	56.340	36.67%
<b>HBD</b>	(S)	65.566	64.433	73.103	67.017	69.505	60.788	61.406	39.96%
<b>BLK</b>	(S)	9.306	13.409	21.897	29.691	25.317	34.136	30.821	20.06%
<b>CPL</b>	(S)	0.367	0.197	0.675	0.807	1.136	0.258	5.083	3.31%
<b>PPT</b>	(B)	14.496	13.234	15.057	14.815	15.325	15.121	15.159	9.87%
<b>HBD</b>	(B)	118.407	117.163	128.647	126.916	124.454	122.238	124.069	80.75%
<b>BLK</b>	(B)	0.000	0.000	0.000	0.000	0.000	0.000	0.000	0.00%
<b>CPL</b>	(B)	19.418	19.161	11.892	11.928	8.547	12.116	14.422	9.39%
		<b>Sell &amp; Buy Orders Traded per Price Type</b>							<b>(%)</b>
<b>PPT</b>	(S)	1484	1518	1552	1728	1667	1689	1702	32.90%
<b>HBD</b>	(S)	2577	2646	3146	3211	3430	3600	3461	66.91%
<b>BLK</b>	(S)	8	9	13	10	9	13	10	0.19%
<b>PPT</b>	(B)	2263	2266	2308	2296	2317	2324	2316	36.52%
<b>HBD</b>	(B)	3891	3942	4037	4157	3947	4001	4025	63.48%
<b>BLK</b>	(B)	0	0	0	0	0	0	0	0.00%

- MCP** Market Clearing Price (€/MWh)
- PPT** Priority Price-Taking
- HBD** Hybrid
- BLK** Block
- CPL** Market Coupling Flow

### Trade's Volume Mix

	Sell - MWh	Buy - MWh	
<b>Lignite</b> (9.4%)	14,379	0	(0.0%)
<b>Crete Conv.</b> (0.6%)	927	0	(0.0%)
<b>Gas</b> (30.2%)	46,369	0	(0.0%)
<b>Hydro</b> (8.8%)	13,444	0	(0.0%)
<b>Imports</b> (5.4%)	8,323		
<b>RES</b> (44.9%)	69,063	996	(0.6%)
<b>Crete RES</b> (0.6%)	998	0	(0.0%)
<b>BESS</b> (0.1%)	146	171	(0.1%)
<b>HV Load</b> (0.0%)	0	19,485	(12.7%)
<b>MV Load</b> (0.0%)	0	30,646	(19.9%)
<b>LV Load</b> (0.0%)	0	66,401	(43.2%)
<b>Crete Load</b> (0.0%)	0	7,631	(5.0%)
<b>Pumping</b> (0.0%)	0	246	(0.2%)
<b>Exports</b>		25,588	(16.7%)
<b>Sys.Losses</b> (0.0%)	0	2,486	(1.6%)
<b>D/R Load</b> (0.0%)	0	0	(0.0%)

