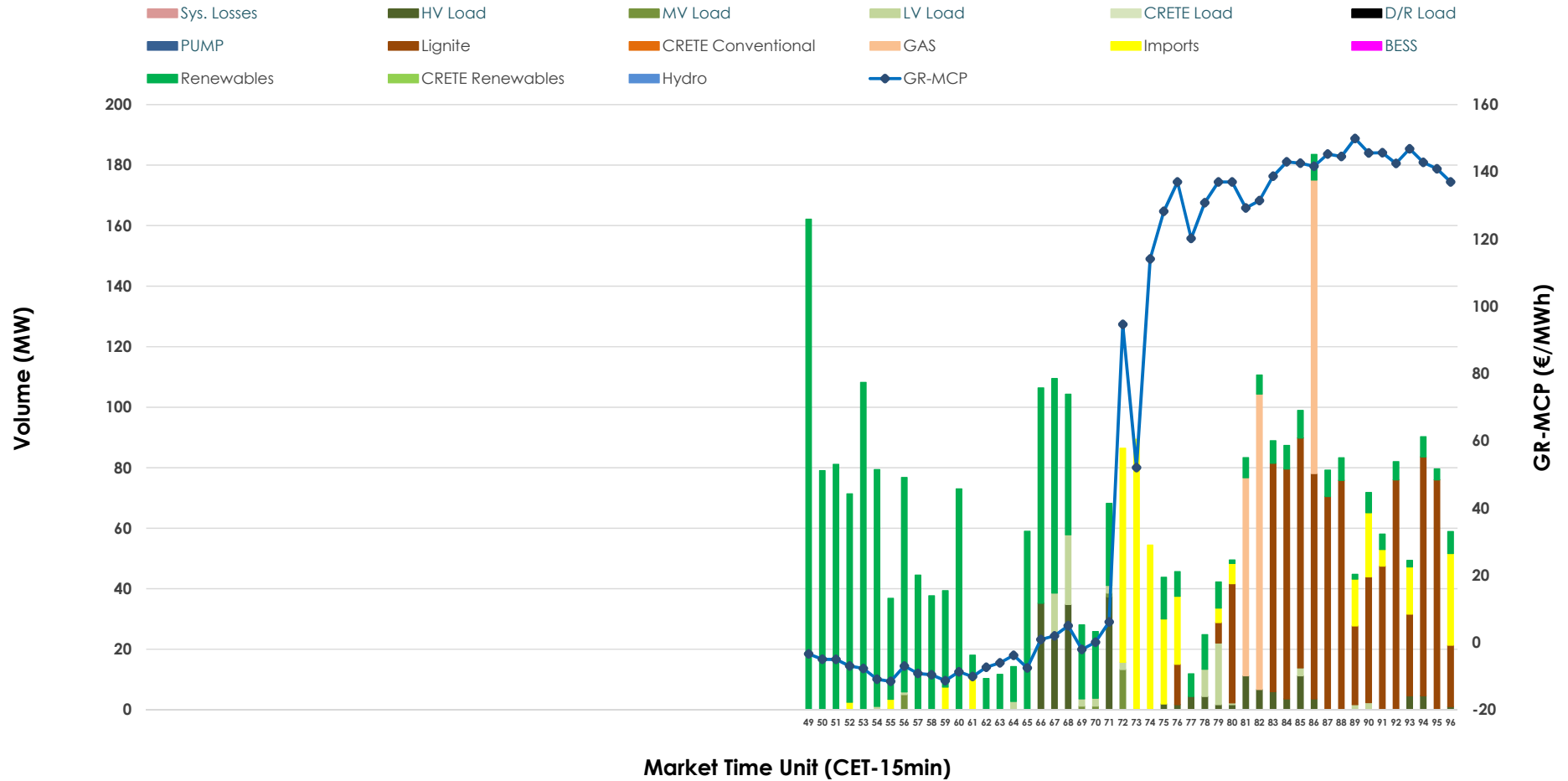


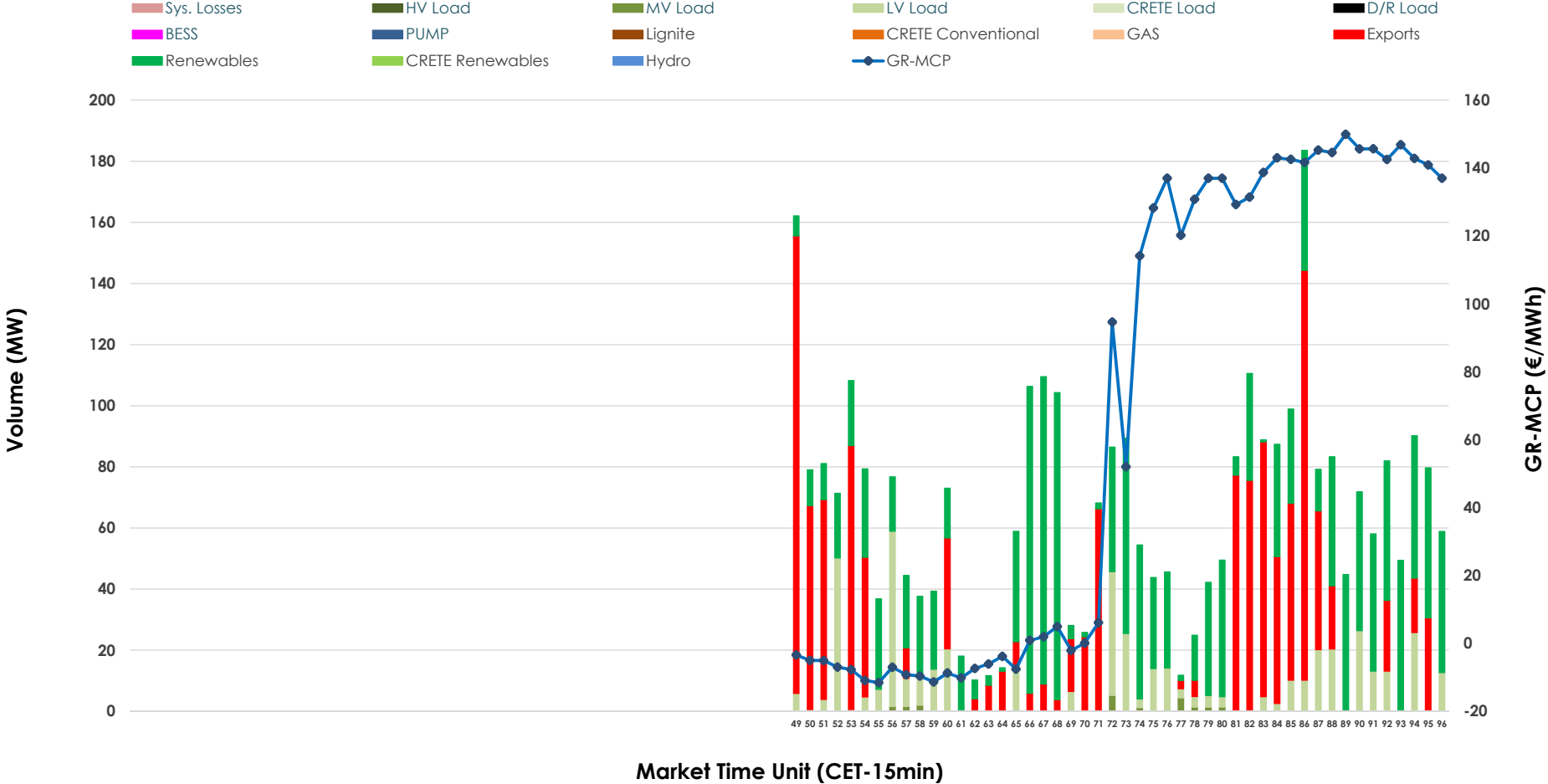


IDA '3' Market Outlook

07.06.2026 IDA '3' Market - Sell



07.06.2026 IDA '3' Market - Buy



GR Bidding Zone Weekly Figures

Delivery Day	01.06	02.06	03.06	04.06	05.06	06.06	07.06
	↗ 16%	↘ -14%	↘ -12%	↗ 17%	↗ 20%	↘ -44%	↗ 0%
Avg.MCP (€/MWh)	113.15	96.79	84.90	99.36	119.09	66.44	66.65
Max.MCP (€/MWh)	245.99	171.85	151.86	203.24	180.60	150.74	149.92
Min.MCP (€/MWh)	15.00	1.83	7.31	3.05	48.90	-32.00	-11.56
	↘ -36%	↘ -32%	↗ 21%	↘ -16%	↘ -32%	↗ 97%	↘ -38%
Tot.Vol(GWh)	2.86	1.93	2.33	1.95	1.32	2.60	1.62

Trades by Order Type

Delivery Day		01.06	02.06	03.06	04.06	05.06	06.06	07.06	
Ord Price Type		Sell & Buy Trades in (GWh) per Price Type							(%)
PPT	(S)	0.000	0.000	0.000	0.000	0.000	0.000	0.000	0.00%
HBD	(S)	1.017	0.682	0.916	0.423	0.378	0.223	0.713	88.00%
BLK	(S)	0.000	0.000	0.000	0.000	0.000	0.000	0.000	0.00%
CPL	(S)	0.412	0.284	0.251	0.552	0.282	1.079	0.097	12.00%
PPT	(B)	0.000	0.000	0.000	0.000	0.000	0.000	0.000	0.00%
HBD	(B)	0.942	0.786	0.667	0.905	0.504	1.301	0.500	61.74%
BLK	(B)	0.000	0.000	0.000	0.000	0.000	0.000	0.000	0.00%
CPL	(B)	0.488	0.180	0.500	0.069	0.156	0.000	0.310	38.26%
		Sell & Buy Orders Traded per Price Type							(%)
PPT	(S)	0	0	0	0	0	0	0	0.00%
HBD	(S)	168	189	244	146	238	58	79	100.00%
BLK	(S)	0	0	0	0	0	0	0	0.00%
PPT	(B)	0	0	0	0	0	0	0	0.00%
HBD	(B)	184	277	260	273	216	273	172	100.00%
BLK	(B)	0	0	0	0	0	0	0	0.00%

- MCP** Market Clearing Price (€/MWh)
- PPT** Priority Price-Taking
- HBD** Hybrid
- BLK** Block
- CPL** Market Coupling Flow

Trade's Volume Mix

	Sell - MWh	Buy - MWh	
Lignite (27.8%)	225	0	(0.0%)
Crete Conv. (0.0%)	0	0	(0.0%)
Gas (8.0%)	65	0	(0.0%)
Hydro (0.0%)	0	0	(0.0%)
Imports (12.0%)	97		
RES (42.6%)	345	376	(46.4%)
Crete RES (0.0%)	0	0	(0.0%)
BESS (0.0%)	0	0	(0.0%)
HV Load (6.1%)	50	0	(0.0%)
MV Load (0.7%)	6	5	(0.6%)
LV Load (2.8%)	22	120	(14.8%)
Crete Load (0.0%)	0	0	(0.0%)
Pumping (0.0%)	0	0	(0.0%)
Exports		310	(38.3%)
Sys.Losses (0.0%)	0	0	(0.0%)
D/R Load (0.0%)	0	0	(0.0%)

