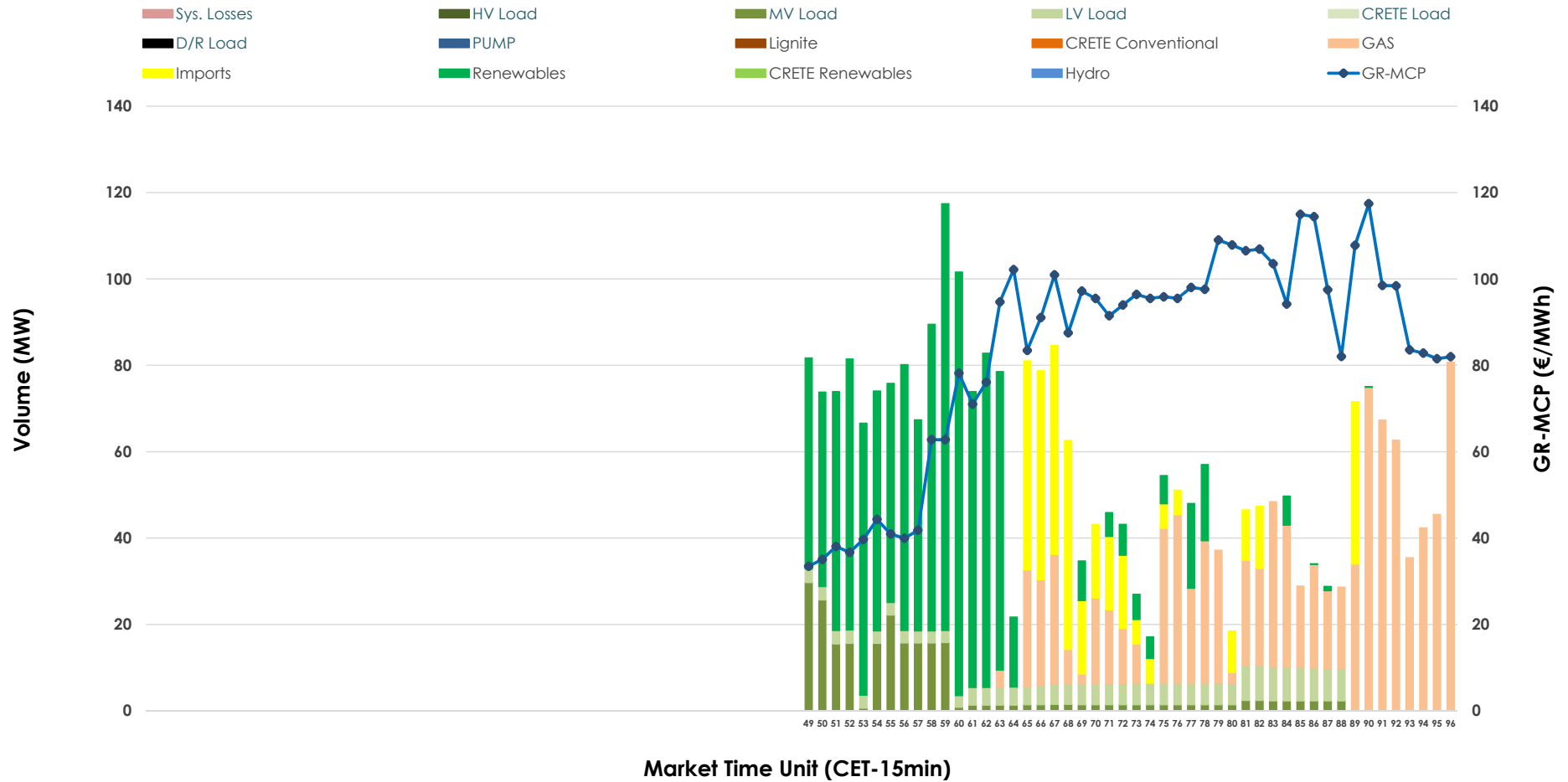


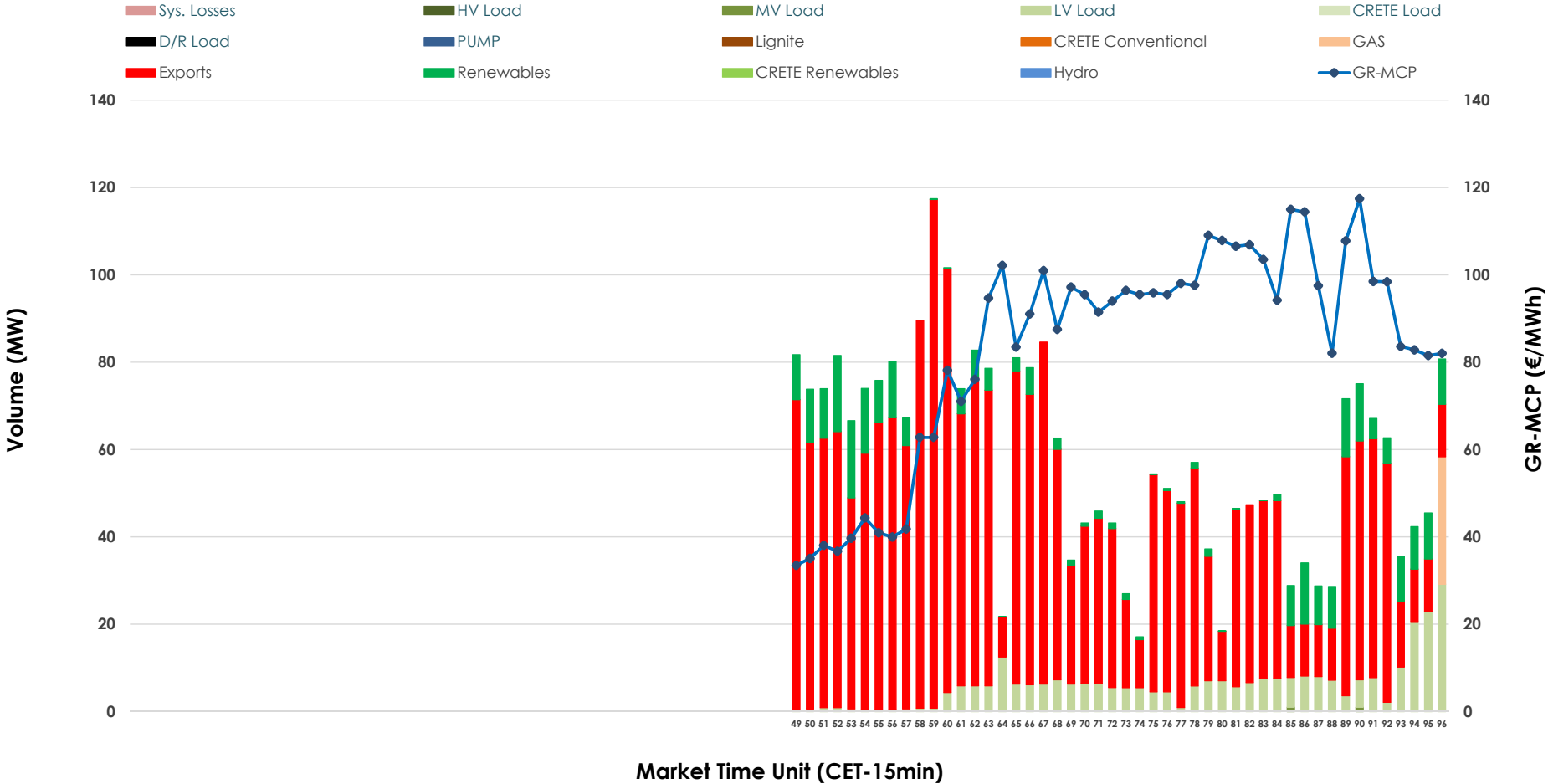


IDA '3' Market Outlook

01.01.2026 IDA '3' Market - Sell



01.01.2026 IDA '3' Market - Buy



GR Bidding Zone Weekly Figures

Delivery Day	26.12	27.12	28.12	29.12	30.12	31.12	01.01
	↗ 4%	↘ -10%	↘ -6%	↗ 30%	↘ -17%	↗ 32%	↘ -36%
Avg.MCP (€/MWh)	107.76	97.17	90.92	118.21	97.88	129.63	83.47
Max.MCP (€/MWh)	124.35	137.20	125.61	170.91	147.05	221.33	117.41
Min.MCP (€/MWh)	86.95	25.00	14.61	76.36	35.00	81.04	33.48
	↗ 44%	↘ -56%	↗ 48%	↘ -51%	↗ 88%	↗ 33%	↘ -54%
Tot.Vol(GWh)	3.81	1.68	2.50	1.22	2.30	3.06	1.41

Trades by Order Type

Delivery Day		26.12	27.12	28.12	29.12	30.12	31.12	01.01	
Ord Price Type		Sell & Buy Trades in (GWh) per Price Type							(%)
PPT	(S)	0.000	0.000	0.000	0.000	0.000	0.000	0.000	0.00%
HBD	(S)	1.364	0.658	1.209	0.427	0.688	0.780	0.615	87.31%
BLK	(S)	0.000	0.000	0.000	0.000	0.000	0.000	0.000	0.00%
CPL	(S)	0.541	0.182	0.038	0.184	0.462	0.749	0.089	12.69%
PPT	(B)	0.000	0.000	0.000	0.000	0.000	0.000	0.000	0.00%
HBD	(B)	0.353	0.596	0.201	0.396	0.344	1.459	0.150	21.22%
BLK	(B)	0.000	0.000	0.000	0.000	0.000	0.000	0.000	0.00%
CPL	(B)	1.552	0.245	1.047	0.214	0.805	0.070	0.555	78.78%
		Sell & Buy Orders Traded per Price Type							(%)
PPT	(S)	0	0	0	0	0	0	0	0.00%
HBD	(S)	246	268	218	139	219	181	138	100.00%
BLK	(S)	0	0	0	0	0	0	0	0.00%
PPT	(B)	0	0	0	0	0	0	0	0.00%
HBD	(B)	84	150	143	215	187	279	129	100.00%
BLK	(B)	0	0	0	0	0	0	0	0.00%

- MCP** Market Clearing Price (€/MWh)
- PPT** Priority Price-Taking
- HBD** Hybrid
- BLK** Block
- CPL** Market Coupling Flow

Trade's Volume Mix

		Sell - MWh	Buy - MWh	
Lignite	(0.0%)	0	0	(0.0%)
Crete Conv.	(0.0%)	0	0	(0.0%)
Gas	(34.0%)	240	7	(1.0%)
Hydro	(0.0%)	0	0	(0.0%)
Imports	(12.7%)	89		
RES	(38.2%)	269	68	(9.7%)
Crete RES	(0.0%)	0	0	(0.0%)
HV Load	(0.0%)	0	0	(0.0%)
MV Load	(8.3%)	59	1	(0.1%)
LV Load	(6.8%)	48	73	(10.4%)
Crete Load	(0.0%)	0	0	(0.0%)
Pumping	(0.0%)	0	0	(0.0%)
Exports			555	(78.8%)
Sys.Losses	(0.0%)	0	0	(0.0%)
D/R Load	(0.0%)	0	0	(0.0%)

