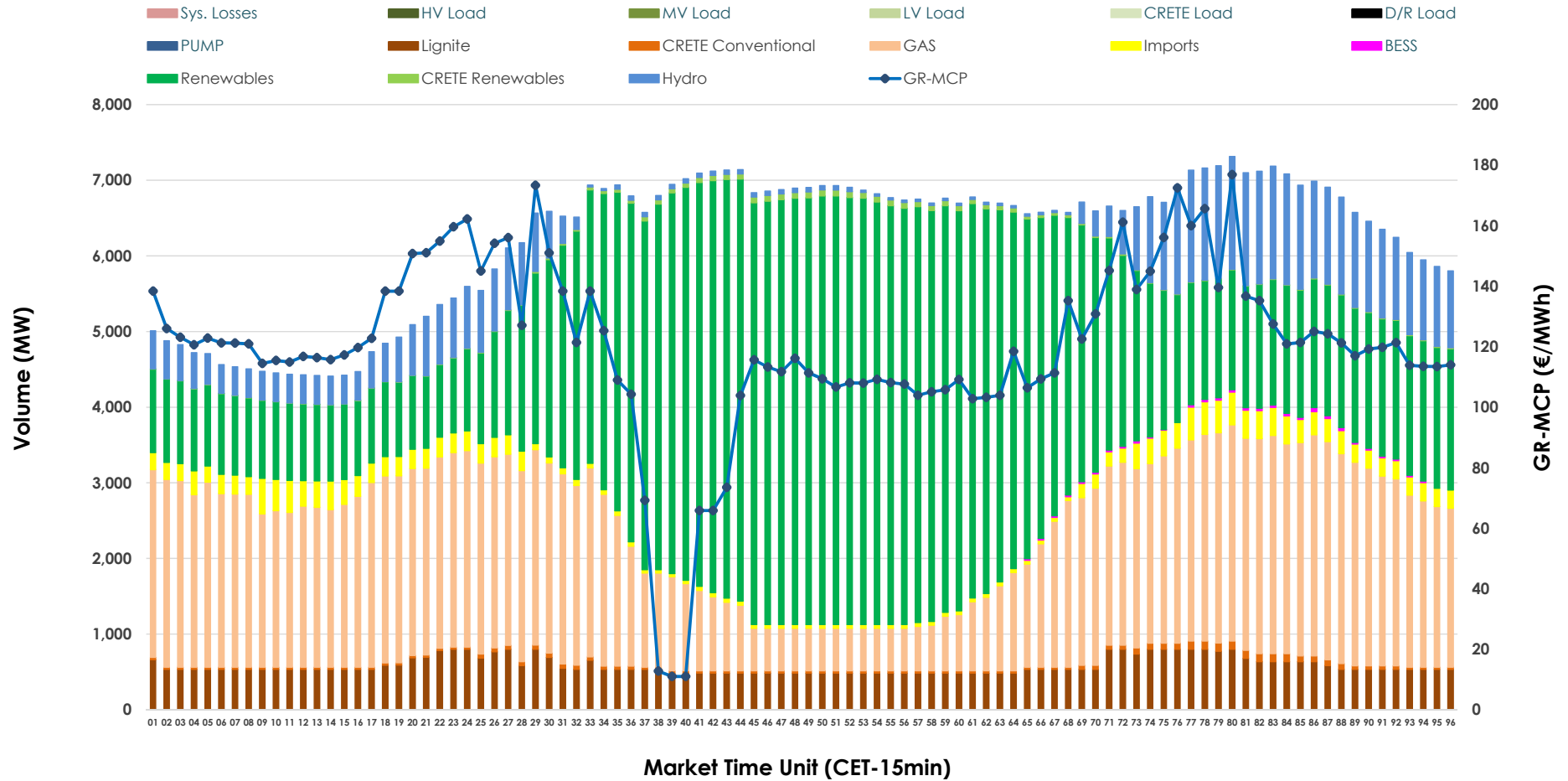


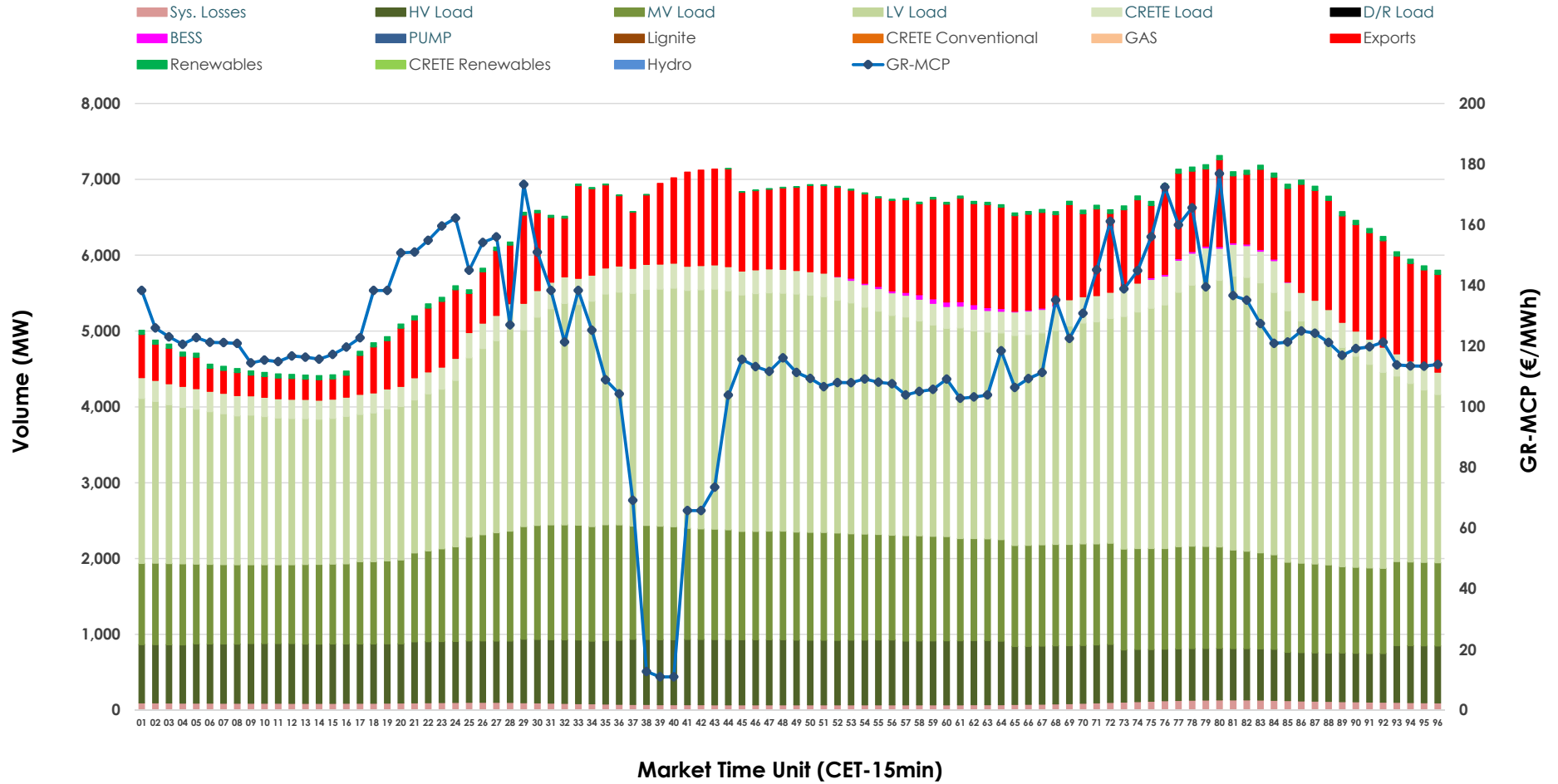


# Day-Ahead Market Outlook

07.05.2026 Day-Ahead Market - Sell



### 07.05.2026 Day-Ahead Market - Buy



### GR Bidding Zone Weekly Figures

Delivery Day	01.05	02.05	03.05	04.05	05.05	06.05	07.05
	↓ -37%	↗ 13%	↗ 11%	↑ 45%	→ 0%	↗ 4%	↗ 17%
<b>Avg.MCP (€/MWh)</b>	54.50	61.40	68.20	98.94	98.73	103.01	120.39
<b>Max.MCP (€/MWh)</b>	120.80	182.68	172.97	263.41	257.05	205.60	176.89
<b>Min.MCP (€/MWh)</b>	0.00	-5.00	-10.25	-0.10	-0.01	0.00	11.00
	↗ 5%	↗ 4%	↘ -2%	↗ 4%	↘ -1%	↘ -3%	→ 1%
<b>Tot.Vol(GWh)</b>	294.18	304.64	299.12	311.19	307.32	296.65	298.95

### Trades by Order Type

Delivery Day		01.05	02.05	03.05	04.05	05.05	06.05	07.05	
<b>Ord Price Type</b>		Sell & Buy Trades in (GWh) per Price Type							(%)
<b>PPT</b>	(S)	70.948	77.082	71.520	59.921	56.144	52.370	54.293	36.32%
<b>HBD</b>	(S)	66.512	65.566	64.433	73.103	67.017	69.505	60.788	40.67%
<b>BLK</b>	(S)	9.630	9.306	13.409	21.897	29.691	25.317	34.136	22.84%
<b>CPL</b>	(S)	0.000	0.367	0.197	0.675	0.807	1.136	0.258	0.17%
<b>PPT</b>	(B)	13.282	14.496	13.234	15.057	14.815	15.325	15.121	10.12%
<b>HBD</b>	(B)	114.864	118.407	117.163	128.647	126.916	124.454	122.238	81.78%
<b>BLK</b>	(B)	0.000	0.000	0.000	0.000	0.000	0.000	0.000	0.00%
<b>CPL</b>	(B)	18.943	19.418	19.161	11.892	11.928	8.547	12.116	8.11%
		Sell & Buy Orders Traded per Price Type							(%)
<b>PPT</b>	(S)	1559	1484	1518	1552	1728	1667	1689	31.86%
<b>HBD</b>	(S)	2875	2577	2646	3146	3211	3430	3600	67.90%
<b>BLK</b>	(S)	9	8	9	13	10	9	13	0.25%
<b>PPT</b>	(B)	2294	2263	2266	2308	2296	2317	2324	36.74%
<b>HBD</b>	(B)	4191	3891	3942	4037	4157	3947	4001	63.26%
<b>BLK</b>	(B)	0	0	0	0	0	0	0	0.00%

**MCP** Market Clearing Price (€/MWh)  
**PPT** Priority Price-Taking  
**HBD** Hybrid  
**BLK** Block  
**CPL** Market Coupling Flow

### Trade's Volume Mix

	Sell - MWh	Buy - MWh	
<b>Lignite</b> (9.3%)	13,949	0	(0.0%)
<b>Crete Conv.</b> (0.7%)	1,076	0	(0.0%)
<b>Gas</b> (31.1%)	46,451	0	(0.0%)
<b>Hydro</b> (8.5%)	12,721	0	(0.0%)
<b>Imports</b> (3.1%)	4,656		
<b>RES</b> (46.7%)	69,739	887	(0.6%)
<b>Crete RES</b> (0.5%)	688	0	(0.0%)
<b>BESS</b> (0.1%)	195	199	(0.1%)
<b>HV Load</b> (0.0%)	0	18,755	(12.5%)
<b>MV Load</b> (0.0%)	0	30,908	(20.7%)
<b>LV Load</b> (0.0%)	0	65,456	(43.8%)
<b>Crete Load</b> (0.0%)	0	7,650	(5.1%)
<b>Pumping</b> (0.0%)	0	0	(0.0%)
<b>Exports</b>		23,370	(15.6%)
<b>Sys.Losses</b> (0.0%)	0	2,250	(1.5%)
<b>D/R Load</b> (0.0%)	0	0	(0.0%)

