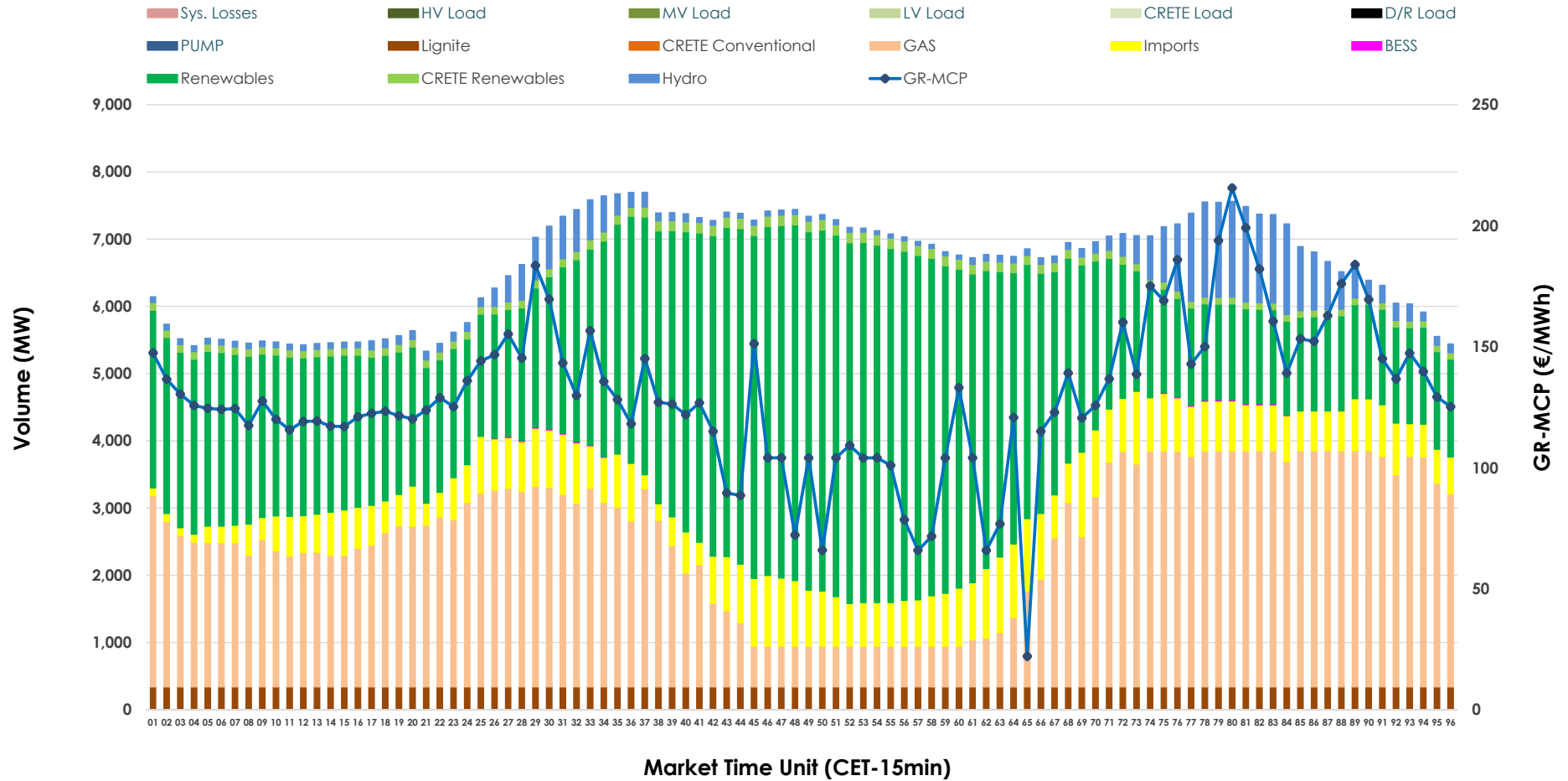


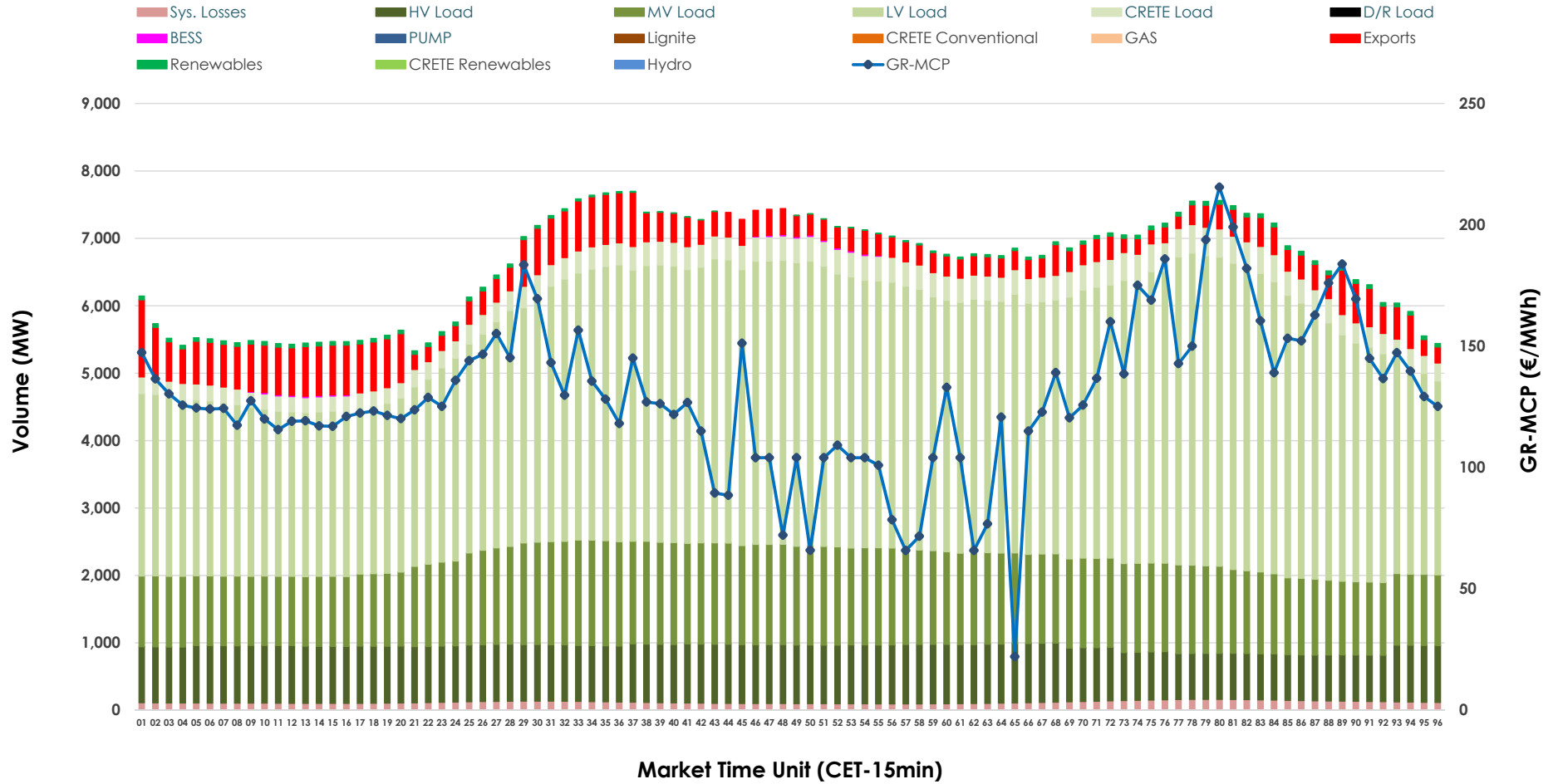


# Day-Ahead Market Outlook

03.04.2026 Day-Ahead Market - Sell



### 03.04.2026 Day-Ahead Market - Buy



### GR Bidding Zone Weekly Figures

Delivery Day	28.03	29.03	30.03	31.03	01.04	02.04	03.04
	👇 -12%	👇 -6%	👆 50%	👆 13%	👆 16%	👇 -12%	👇 -5%
<b>Avg.MCP (€/MWh)</b>	83.88	78.67	118.01	133.84	154.99	136.58	129.62
<b>Max.MCP (€/MWh)</b>	161.79	159.68	223.00	218.54	239.12	196.93	215.54
<b>Min.MCP (€/MWh)</b>	5.02	0.00	0.02	91.97	119.18	105.00	22.09
	👇 -14%	👇 -6%	👆 10%	👆 3%	👆 3%	👉 0%	👇 -12%
<b>Tot.Vol(GWh)</b>	331.32	310.02	341.69	350.68	361.49	360.02	318.52

### Trades by Order Type

Delivery Day		28.03	29.03	30.03	31.03	01.04	02.04	03.04	
<b>Ord Price Type</b>		<b>Sell &amp; Buy Trades in (GWh) per Price Type</b>							<b>(%)</b>
<b>PPT</b>	(S)	58.210	53.869	52.119	53.482	56.513	68.739	50.740	31.86%
<b>HBD</b>	(S)	62.984	60.502	74.533	74.499	74.726	73.492	61.037	38.33%
<b>BLK</b>	(S)	30.164	21.936	30.517	40.412	41.726	33.560	36.198	22.73%
<b>CPL</b>	(S)	14.305	18.705	13.675	6.945	7.778	4.221	11.285	7.09%
<b>PPT</b>	(B)	13.590	14.311	13.444	14.177	14.771	14.608	13.665	8.58%
<b>HBD</b>	(B)	141.361	124.133	136.551	141.287	148.563	151.077	140.527	88.24%
<b>BLK</b>	(B)	0.000	0.000	0.000	0.000	0.000	0.000	0.000	0.00%
<b>CPL</b>	(B)	10.712	16.567	20.849	19.875	17.409	14.326	5.069	3.18%
		<b>Sell &amp; Buy Orders Traded per Price Type</b>							<b>(%)</b>
<b>PPT</b>	(S)	1745	1557	1546	1555	1558	1510	1522	32.40%
<b>HBD</b>	(S)	3058	2506	3107	3233	3061	3012	3159	67.26%
<b>BLK</b>	(S)	11	11	15	18	20	16	16	0.34%
<b>PPT</b>	(B)	2321	2235	2243	2259	2261	2271	2238	35.87%
<b>HBD</b>	(B)	4177	3949	4044	4031	4083	4170	4001	64.13%
<b>BLK</b>	(B)	0	0	0	0	0	0	0	0.00%

- MCP** Market Clearing Price (€/MWh)
- PPT** Priority Price-Taking
- HBD** Hybrid
- BLK** Block
- CPL** Market Coupling Flow

### Trade's Volume Mix

	Sell - MWh	Buy - MWh	
<b>Lignite</b> (5.1%)	8,160	0	(0.0%)
<b>Crete Conv.</b> (0.0%)	0	0	(0.0%)
<b>Gas</b> (34.1%)	54,236	0	(0.0%)
<b>Hydro</b> (4.8%)	7,574	0	(0.0%)
<b>Imports</b> (10.2%)	16,175		
<b>RES</b> (44.0%)	70,071	907	(0.6%)
<b>Crete RES</b> (1.9%)	2,975	0	(0.0%)
<b>BESS</b> (0.0%)	70	86	(0.1%)
<b>HV Load</b> (0.0%)	0	19,660	(12.3%)
<b>MV Load</b> (0.0%)	0	30,886	(19.4%)
<b>LV Load</b> (0.0%)	0	86,182	(54.1%)
<b>Crete Load</b> (0.0%)	0	7,790	(4.9%)
<b>Pumping</b> (0.0%)	0	0	(0.0%)
<b>Exports</b>		10,902	(6.8%)
<b>Sys.Losses</b> (0.0%)	0	2,847	(1.8%)
<b>D/R Load</b> (0.0%)	0	0	(0.0%)

