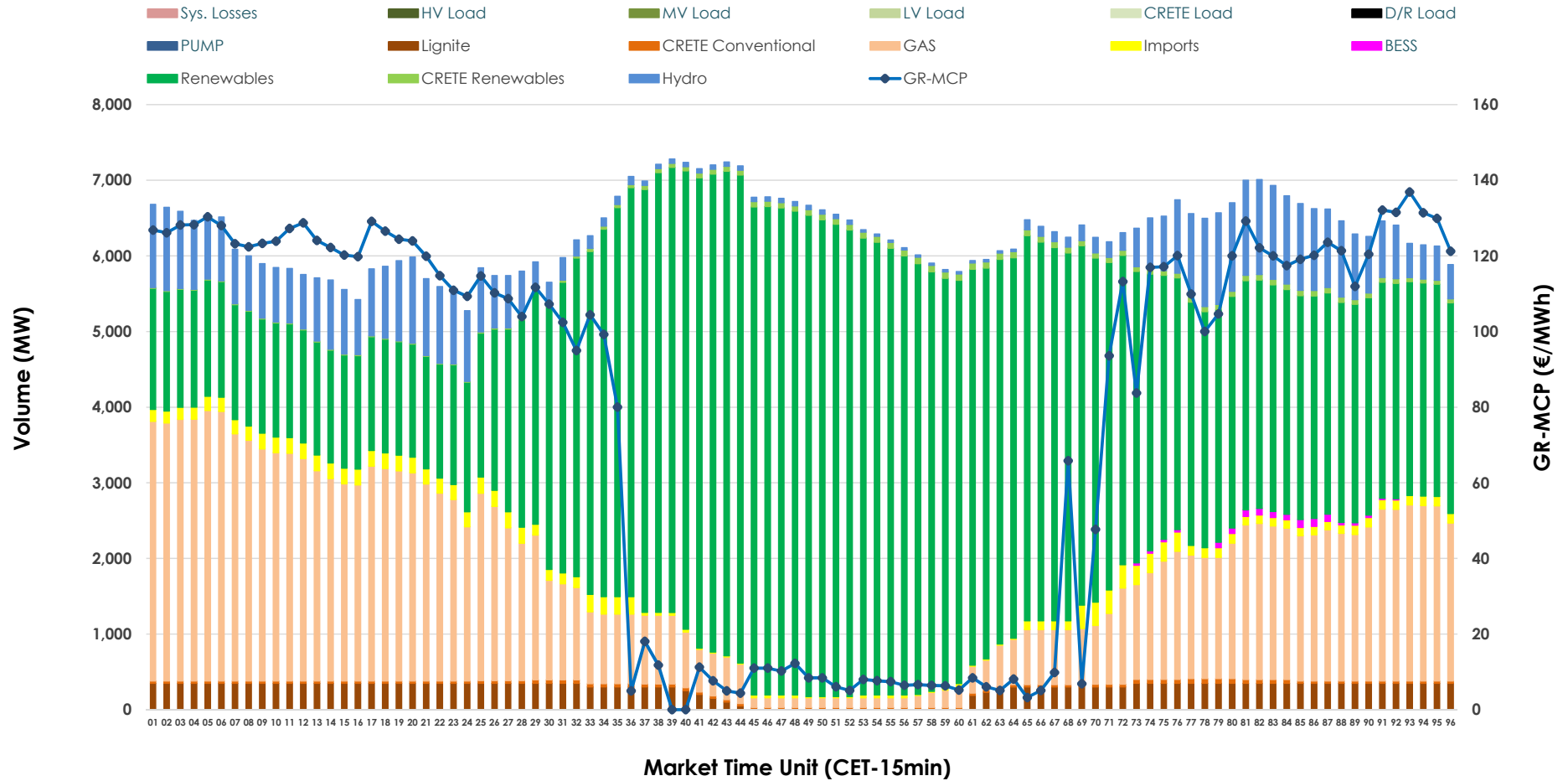


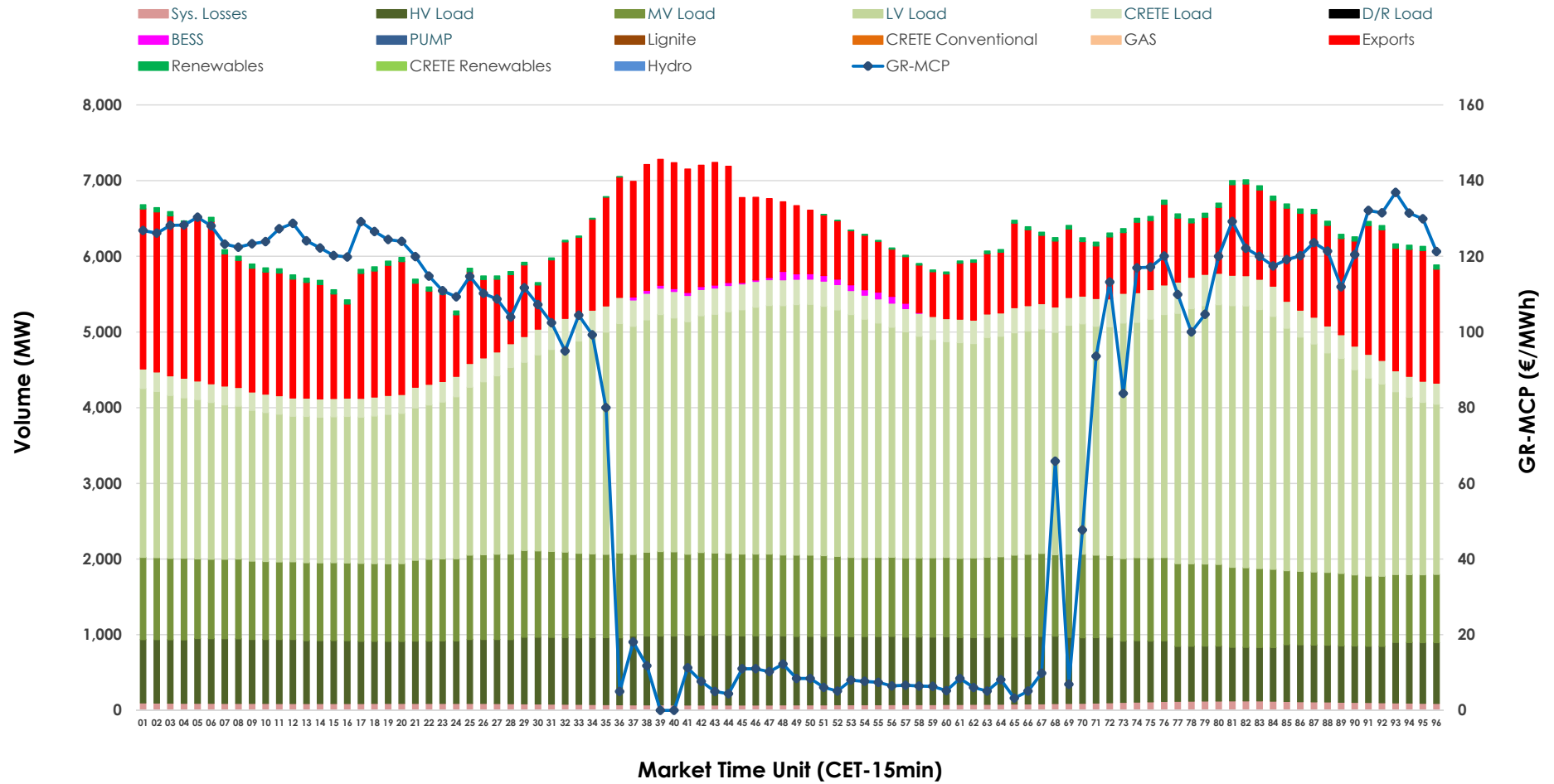


Day-Ahead Market Outlook

16.05.2026 Day-Ahead Market - Sell



16.05.2026 Day-Ahead Market - Buy



GR Bidding Zone Weekly Figures

Delivery Day	10.05	11.05	12.05	13.05	14.05	15.05	16.05
	↓ -16%	↑ 6%	↓ -19%	↑ 20%	↓ -1%	↓ -3%	↓ -14%
Avg.MCP (€/MWh)	91.94	97.12	78.99	95.00	94.38	91.65	78.36
Max.MCP (€/MWh)	208.60	191.00	196.70	187.34	236.73	170.33	136.89
Min.MCP (€/MWh)	-0.02	0.00	-0.10	0.00	0.00	0.00	0.02
	↓ -9%	↑ 12%	↑ 7%	↓ -2%	↑ 2%	↓ -2%	↓ -10%
Tot.Vol(GWh)	283.97	317.58	340.95	335.77	342.44	335.47	303.35

Trades by Order Type

Delivery Day		10.05	11.05	12.05	13.05	14.05	15.05	16.05	
Ord Price Type		Sell & Buy Trades in (GWh) per Price Type							(%)
PPT	(S)	60.371	67.164	77.219	70.214	71.021	68.237	63.469	41.84%
HBD	(S)	57.624	69.769	74.127	78.723	72.208	72.381	66.338	43.74%
BLK	(S)	23.989	21.856	19.129	18.946	27.992	27.116	21.857	14.41%
CPL	(S)	0.000	0.000	0.000	0.000	0.000	0.000	0.013	0.01%
PPT	(B)	14.673	14.748	15.151	15.355	15.696	16.044	14.299	9.43%
HBD	(B)	108.171	122.215	129.213	128.880	127.499	125.379	121.066	79.82%
BLK	(B)	0.000	0.000	0.000	0.000	0.000	0.000	0.000	0.00%
CPL	(B)	19.138	21.826	26.110	23.648	28.027	26.310	16.311	10.75%
		Sell & Buy Orders Traded per Price Type							(%)
PPT	(S)	1716	1762	1764	1686	1757	1720	1725	33.12%
HBD	(S)	3114	3213	2989	3378	3419	3324	3475	66.72%
BLK	(S)	9	6	6	8	9	8	8	0.15%
PPT	(B)	2360	2322	2327	2367	2353	2357	2402	37.70%
HBD	(B)	3578	3881	4077	4041	4071	4036	3969	62.30%
BLK	(B)	0	0	0	0	0	0	0	0.00%

MCP Market Clearing Price (€/MWh)
PPT Priority Price-Taking
HBD Hybrid
BLK Block
CPL Market Coupling Flow

Trade's Volume Mix

		Sell - MWh	Buy - MWh	
Lignite	(4.3%)	6,472	0	(0.0%)
Crete Conv.	(0.6%)	840	0	(0.0%)
Gas	(25.0%)	37,861	0	(0.0%)
Hydro	(8.3%)	12,552	0	(0.0%)
Imports	(2.1%)	3,229		
RES	(58.9%)	89,270	875	(0.6%)
Crete RES	(0.8%)	1,195	0	(0.0%)
BESS	(0.2%)	258	295	(0.2%)
HV Load	(0.0%)	0	20,245	(13.3%)
MV Load	(0.0%)	0	25,377	(16.7%)
LV Load	(0.0%)	0	65,669	(43.3%)
Crete Load	(0.0%)	0	7,663	(5.1%)
Pumping	(0.0%)	0	0	(0.0%)
Exports			29,359	(19.4%)
Sys.Losses	(0.0%)	0	2,194	(1.4%)
D/R Load	(0.0%)	0	0	(0.0%)

