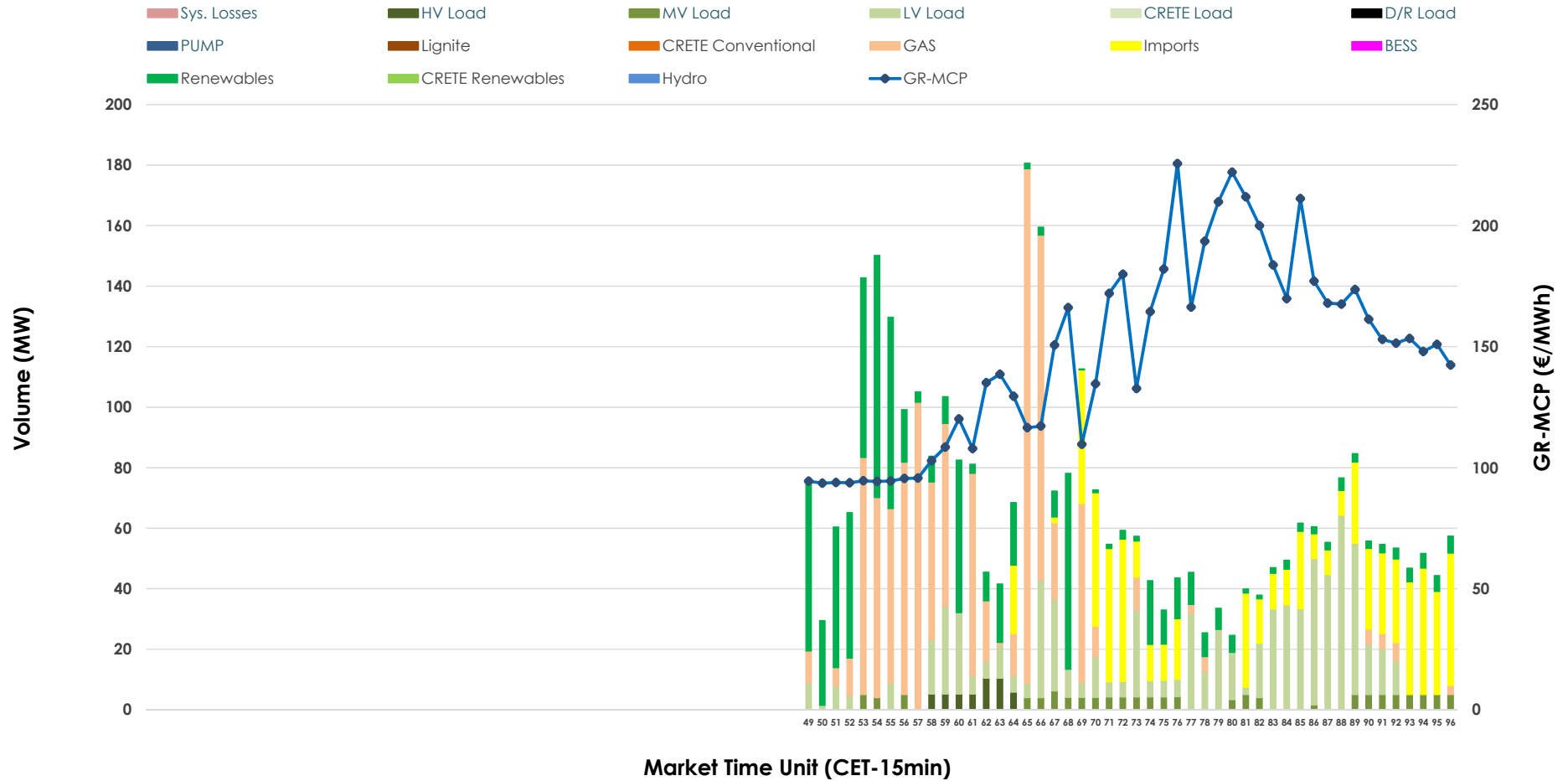


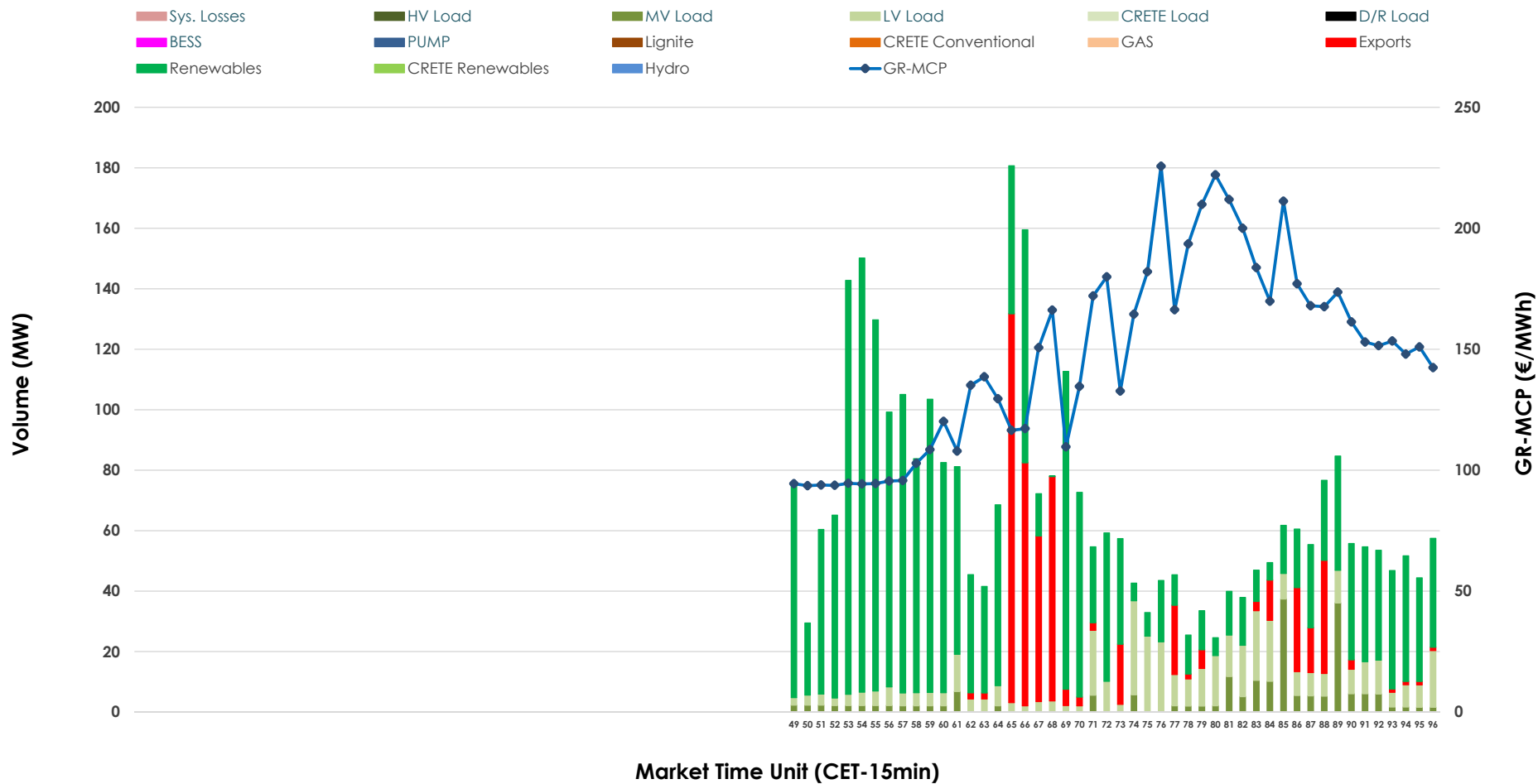


# IDA '3' Market Outlook

31.03.2026 IDA '3' Market - Sell



### 31.03.2026 IDA '3' Market - Buy



### GR Bidding Zone Weekly Figures

Delivery Day	25.03	26.03	27.03	28.03	29.03	30.03	31.03
	👇 -16%	👇 -22%	👆 33%	👇 -5%	👇 -31%	👆 76%	👉 19%
<b>Avg.MCP (€/MWh)</b>	102.12	79.75	106.28	101.47	70.23	123.82	147.08
<b>Max.MCP (€/MWh)</b>	205.42	161.54	137.74	170.33	145.02	223.00	225.64
<b>Min.MCP (€/MWh)</b>	-7.26	-43.75	23.02	8.73	-18.36	-19.98	93.62
	👇 -36%	👆 110%	👉 24%	👇 -29%	👇 -28%	👆 45%	👇 -22%
<b>Tot.Vol(GWh)</b>	1.10	2.31	2.88	2.05	1.47	2.13	1.67

### Trades by Order Type

Delivery Day		25.03	26.03	27.03	28.03	29.03	30.03	31.03	
<b>Ord Price Type</b>		<b>Sell &amp; Buy Trades in (GWh) per Price Type</b>							<b>(%)</b>
<b>PPT</b>	(S)	0.000	0.000	0.000	0.000	0.000	0.000	0.000	0.00%
<b>HBD</b>	(S)	0.414	0.535	0.901	0.787	0.667	0.789	0.673	80.68%
<b>BLK</b>	(S)	0.000	0.000	0.000	0.000	0.000	0.000	0.000	0.00%
<b>CPL</b>	(S)	0.138	0.622	0.540	0.239	0.070	0.275	0.161	19.32%
<b>PPT</b>	(B)	0.000	0.000	0.000	0.000	0.000	0.000	0.000	0.00%
<b>HBD</b>	(B)	0.353	0.650	0.976	0.857	0.249	0.960	0.707	84.80%
<b>BLK</b>	(B)	0.000	0.000	0.000	0.000	0.000	0.000	0.000	0.00%
<b>CPL</b>	(B)	0.199	0.508	0.465	0.169	0.487	0.104	0.127	15.20%
		<b>Sell &amp; Buy Orders Traded per Price Type</b>							<b>(%)</b>
<b>PPT</b>	(S)	0	0	0	0	0	0	0	0.00%
<b>HBD</b>	(S)	224	156	139	200	193	244	169	100.00%
<b>BLK</b>	(S)	0	0	0	0	0	0	0	0.00%
<b>PPT</b>	(B)	0	0	0	0	0	0	0	0.00%
<b>HBD</b>	(B)	143	142	281	259	130	241	280	100.00%
<b>BLK</b>	(B)	0	0	0	0	0	0	0	0.00%

- MCP** Market Clearing Price (€/MWh)
- PPT** Priority Price-Taking
- HBD** Hybrid
- BLK** Block
- CPL** Market Coupling Flow

### Trade's Volume Mix

		Sell - MWh	Buy - MWh	
<b>Lignite</b>	(0.0%)	0	0	(0.0%)
<b>Crete Conv.</b>	(0.0%)	0	0	(0.0%)
<b>Gas</b>	(31.2%)	260	0	(0.0%)
<b>Hydro</b>	(0.0%)	0	0	(0.0%)
<b>Imports</b>	(19.3%)	161		
<b>RES</b>	(22.0%)	184	546	(65.4%)
<b>Crete RES</b>	(0.0%)	0	0	(0.0%)
<b>BESS</b>	(0.0%)	0	0	(0.0%)
<b>HV Load</b>	(1.4%)	12	0	(0.0%)
<b>MV Load</b>	(3.6%)	30	52	(6.2%)
<b>LV Load</b>	(22.4%)	187	110	(13.2%)
<b>Crete Load</b>	(0.0%)	0	0	(0.0%)
<b>Pumping</b>	(0.0%)	0	0	(0.0%)
<b>Exports</b>			127	(15.2%)
<b>Sys.Losses</b>	(0.0%)	0	0	(0.0%)
<b>D/R Load</b>	(0.0%)	0	0	(0.0%)

