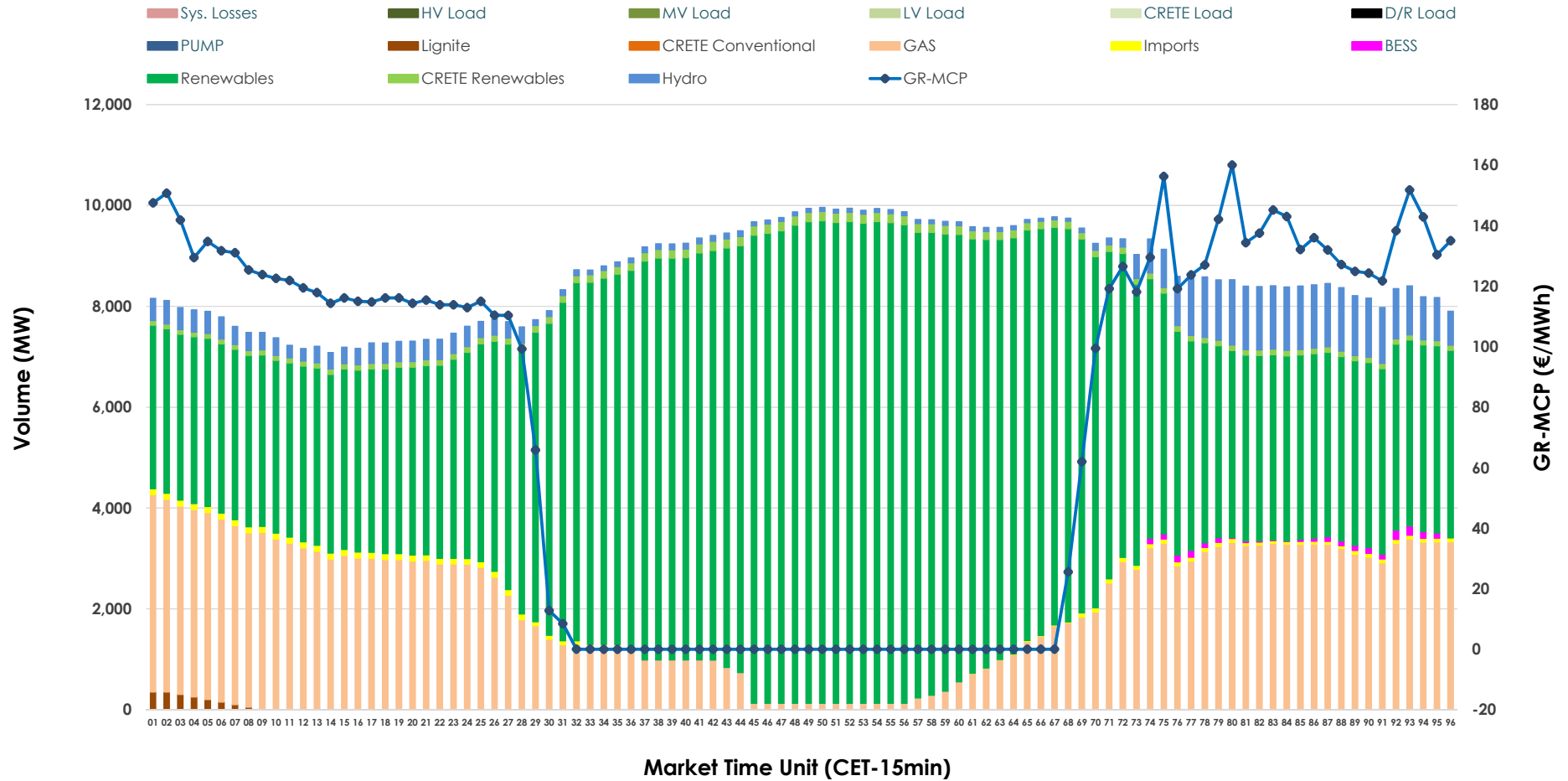


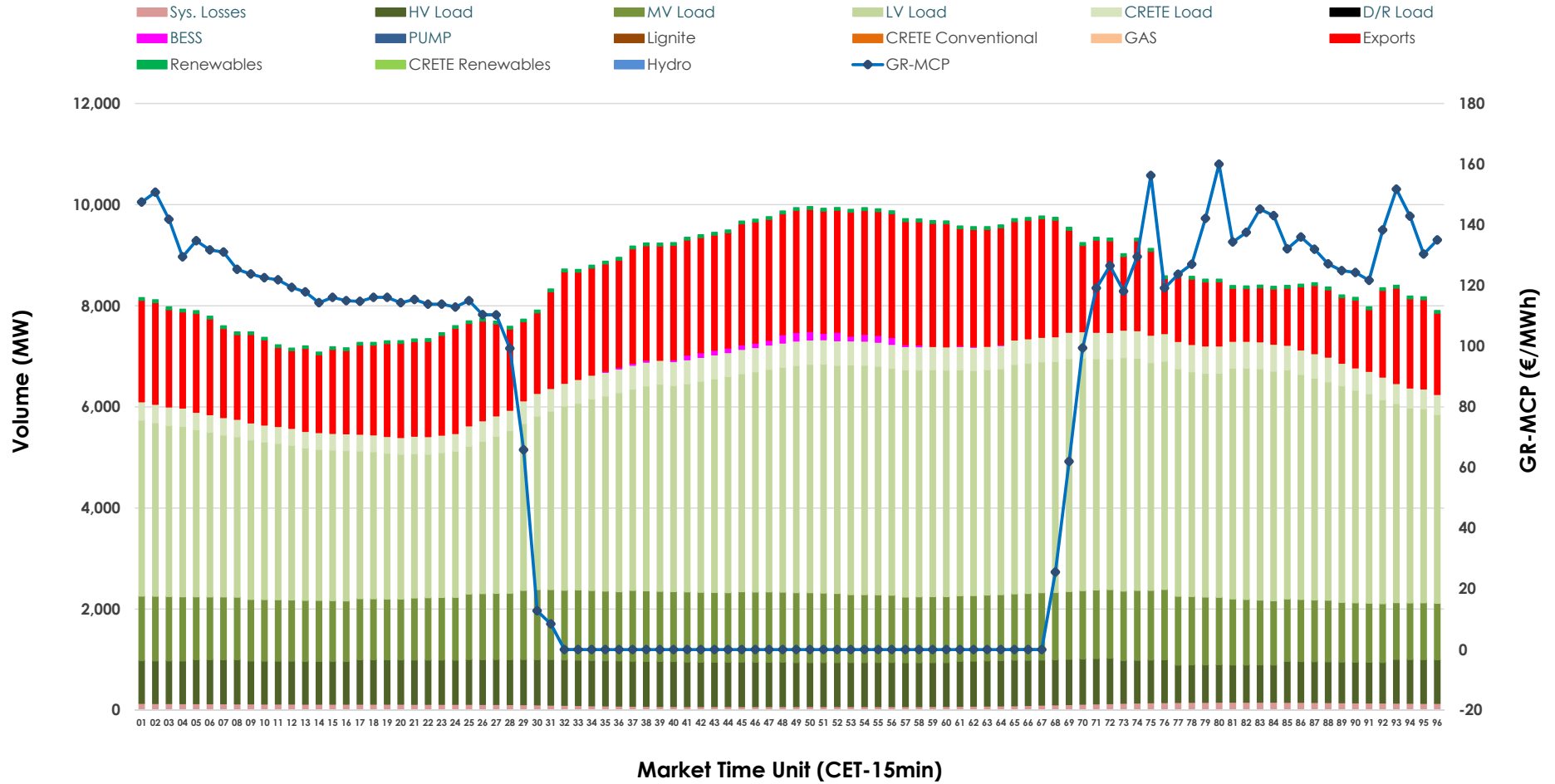


Day-Ahead Market Outlook

27.06.2026 Day-Ahead Market - Sell



27.06.2026 Day-Ahead Market - Buy



GR Bidding Zone Weekly Figures

Delivery Day	21.06	22.06	23.06	24.06	25.06	26.06	27.06
	↓ -1%	↔ 21%	↑ 49%	↔ 13%	↓ -13%	↓ -28%	↓ -15%
Avg.MCP (€/MWh)	68.43	82.87	123.69	139.85	121.33	87.69	74.45
Max.MCP (€/MWh)	145.91	191.08	298.03	300.00	262.00	186.07	160.00
Min.MCP (€/MWh)	-1.00	-0.01	0.00	40.00	11.09	-0.01	-0.01
	↓ -3%	↔ 10%	↔ 1%	↔ -1%	↔ 1%	↔ 5%	↓ -3%
Tot.Vol(GWh)	360.69	398.29	403.96	401.62	406.63	425.18	414.09

Trades by Order Type

Delivery Day		21.06	22.06	23.06	24.06	25.06	26.06	27.06	
Ord Price Type		Sell & Buy Trades in (GWh) per Price Type							(%)
PPT	(S)	83.637	81.817	71.841	63.403	66.832	80.911	90.606	43.76%
HBD	(S)	67.229	87.242	90.967	82.325	86.427	93.814	90.634	43.78%
BLK	(S)	29.177	29.167	37.544	52.636	47.369	37.855	25.803	12.46%
CPL	(S)	0.303	0.919	1.628	2.445	2.690	0.011	0.000	0.00%
PPT	(B)	16.256	17.878	17.854	18.089	18.356	19.094	19.723	9.53%
HBD	(B)	132.687	155.517	162.194	160.856	164.810	166.579	159.315	76.95%
BLK	(B)	0.000	0.000	0.000	0.000	0.000	0.000	0.000	0.00%
CPL	(B)	31.403	25.750	21.932	21.864	20.151	26.918	28.005	13.53%
		Sell & Buy Orders Traded per Price Type							(%)
PPT	(S)	1654	1652	1668	1685	1752	1776	1784	35.16%
HBD	(S)	2836	3199	3750	3993	3869	3397	3281	64.66%
BLK	(S)	14	10	16	23	17	12	9	0.18%
PPT	(B)	2448	2443	2432	2392	2503	2523	2561	38.64%
HBD	(B)	3852	4013	3956	3854	4116	4186	4066	61.36%
BLK	(B)	0	0	0	0	0	0	0	0.00%

MCP Market Clearing Price (€/MWh)
PPT Priority Price-Taking
HBD Hybrid
BLK Block
CPL Market Coupling Flow

Trade's Volume Mix

	Sell - MWh	Buy - MWh	
Lignite (0.2%)	439	0	(0.0%)
Crete Conv. (0.0%)	0	0	(0.0%)
Gas (24.8%)	51,248	0	(0.0%)
Hydro (4.9%)	10,043	0	(0.0%)
Imports (0.7%)	1,442		
RES (67.7%)	140,191	1,296	(0.6%)
Crete RES (1.5%)	3,189	0	(0.0%)
BESS (0.2%)	490	561	(0.3%)
HV Load (0.0%)	0	20,587	(9.9%)
MV Load (0.0%)	0	31,137	(15.0%)
LV Load (0.0%)	0	94,573	(45.7%)
Crete Load (0.0%)	0	10,655	(5.1%)
Pumping (0.0%)	0	0	(0.0%)
Exports		45,536	(22.0%)
Sys.Losses (0.0%)	0	2,697	(1.3%)
D/R Load (0.0%)	0	0	(0.0%)

