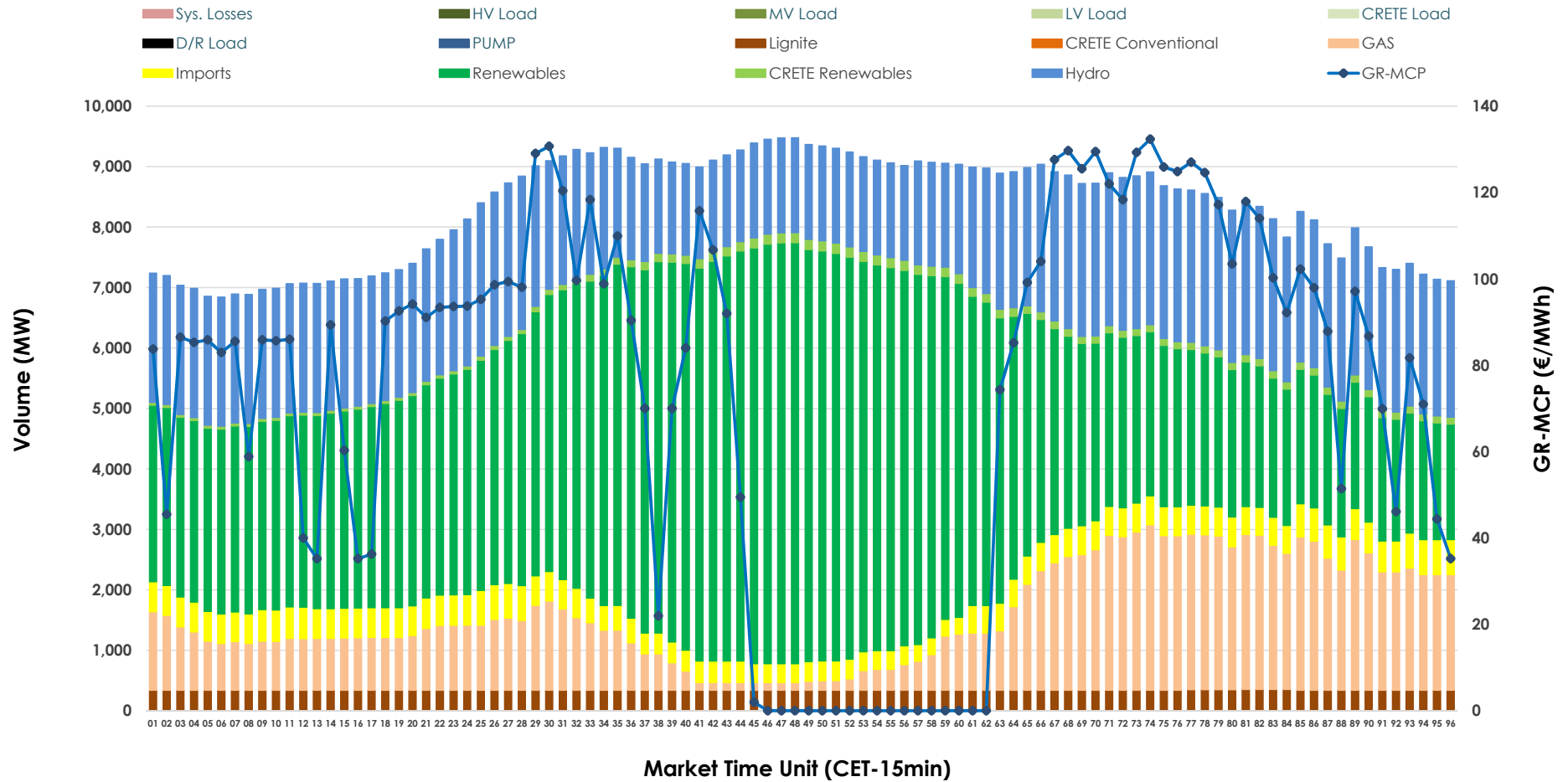


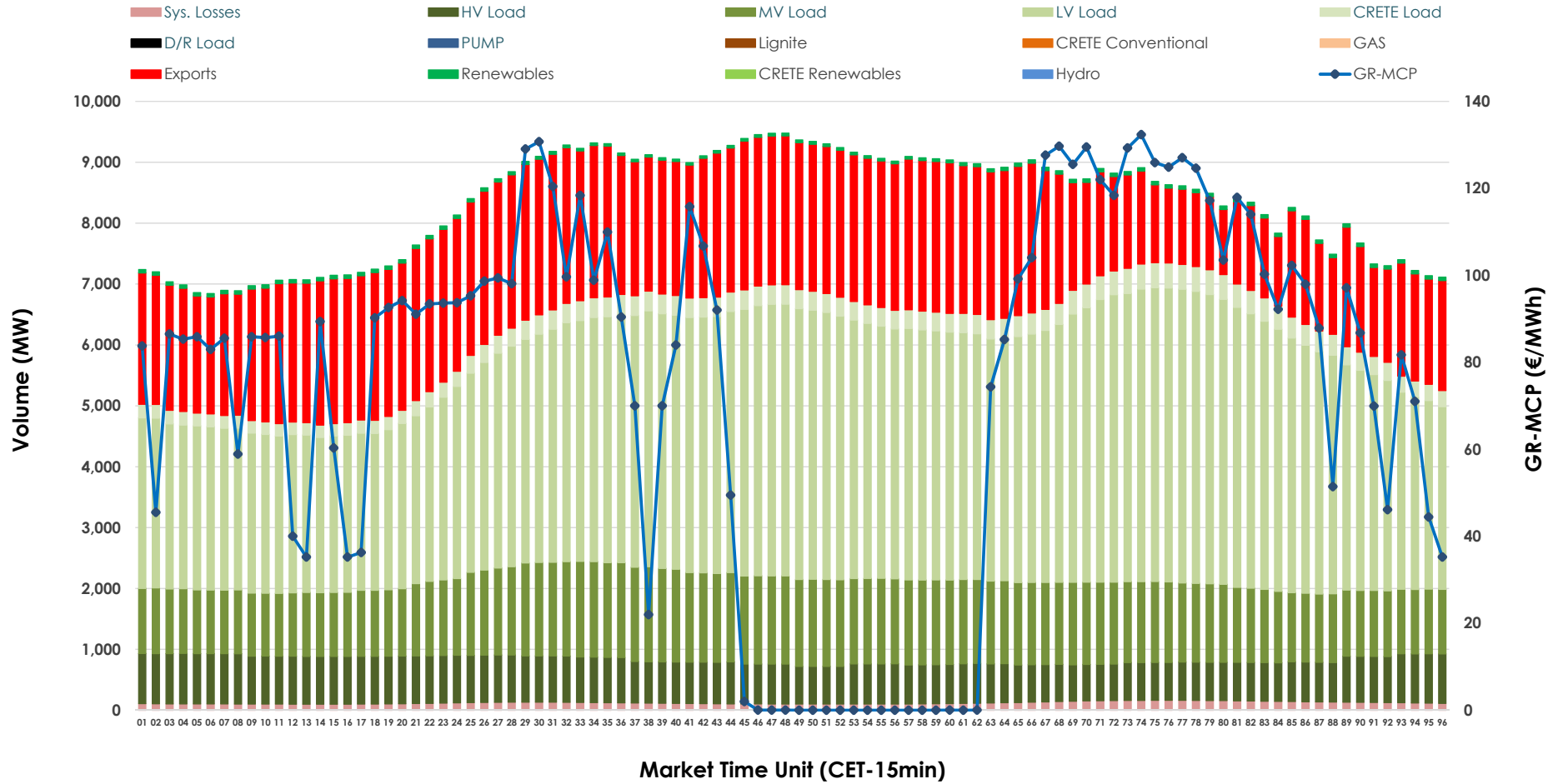


Day-Ahead Market Outlook

20.02.2026 Day-Ahead Market - Sell



20.02.2026 Day-Ahead Market - Buy



GR Bidding Zone Weekly Figures

Delivery Day	14.02	15.02	16.02	17.02	18.02	19.02	20.02
	👇 -28%	👇 -59%	👆 166%	👇 -20%	👇 -10%	👆 39%	👆 2%
Avg.MCP (€/MWh)	65.70	27.10	71.96	57.80	52.05	72.50	74.11
Max.MCP (€/MWh)	116.13	96.30	163.98	152.38	173.32	161.66	132.36
Min.MCP (€/MWh)	0.01	-0.10	0.00	0.00	-1.01	-0.01	0.01
	👇 -4%	👇 -10%	👆 7%	👆 9%	👉 0%	👇 -3%	👆 1%
Tot.Vol(GWh)	386.76	348.20	372.50	405.83	406.30	394.81	400.54

Trades by Order Type

Delivery Day		14.02	15.02	16.02	17.02	18.02	19.02	20.02	
Ord Price Type		Sell & Buy Trades in (GWh) per Price Type							(%)
PPT	(S)	102.419	106.090	101.437	116.187	116.225	114.204	119.604	59.72%
HBD	(S)	69.070	60.657	65.090	67.805	66.379	62.963	64.312	32.11%
BLK	(S)	21.890	7.351	19.722	14.780	20.466	19.776	16.349	8.16%
CPL	(S)	0.000	0.000	0.000	4.142	0.078	0.464	0.003	0.00%
PPT	(B)	12.407	13.254	14.176	12.318	13.438	12.892	13.052	6.52%
HBD	(B)	137.891	127.444	137.125	153.387	151.624	151.249	150.625	75.21%
BLK	(B)	0.000	0.000	0.000	0.000	0.000	0.000	0.000	0.00%
CPL	(B)	43.080	33.399	34.948	37.209	38.086	33.266	36.591	18.27%
		Sell & Buy Orders Traded per Price Type							(%)
PPT	(S)	2270	2169	2324	2508	2477	2482	2516	49.26%
HBD	(S)	2763	2249	2572	2512	2390	2604	2585	50.61%
BLK	(S)	9	3	10	6	11	11	7	0.14%
PPT	(B)	2341	2367	2366	2323	2393	2332	2324	36.31%
HBD	(B)	4210	4372	4040	4233	4317	4024	4076	63.69%
BLK	(B)	0	0	0	0	0	0	0	0.00%

MCP Market Clearing Price (€/MWh)
PPT Priority Price-Taking
HBD Hybrid
BLK Block
CPL Market Coupling Flow

Trade's Volume Mix

		Sell - MWh	Buy - MWh	
Lignite	(4.1%)	8,181	0	(0.0%)
Crete Conv.	(0.0%)	0	0	(0.0%)
Gas	(15.2%)	30,498	0	(0.0%)
Hydro	(25.4%)	50,775	0	(0.0%)
Imports	(5.4%)	10,854		
RES	(48.6%)	97,330	1,210	(0.6%)
Crete RES	(1.3%)	2,630	0	(0.0%)
HV Load	(0.0%)	0	16,970	(8.5%)
MV Load	(0.0%)	0	30,884	(15.4%)
LV Load	(0.0%)	0	90,391	(45.1%)
Crete Load	(0.0%)	0	7,300	(3.6%)
Pumping	(0.0%)	0	0	(0.0%)
Exports			50,592	(25.3%)
Sys.Losses	(0.0%)	0	2,920	(1.5%)
D/R Load	(0.0%)	0	0	(0.0%)

