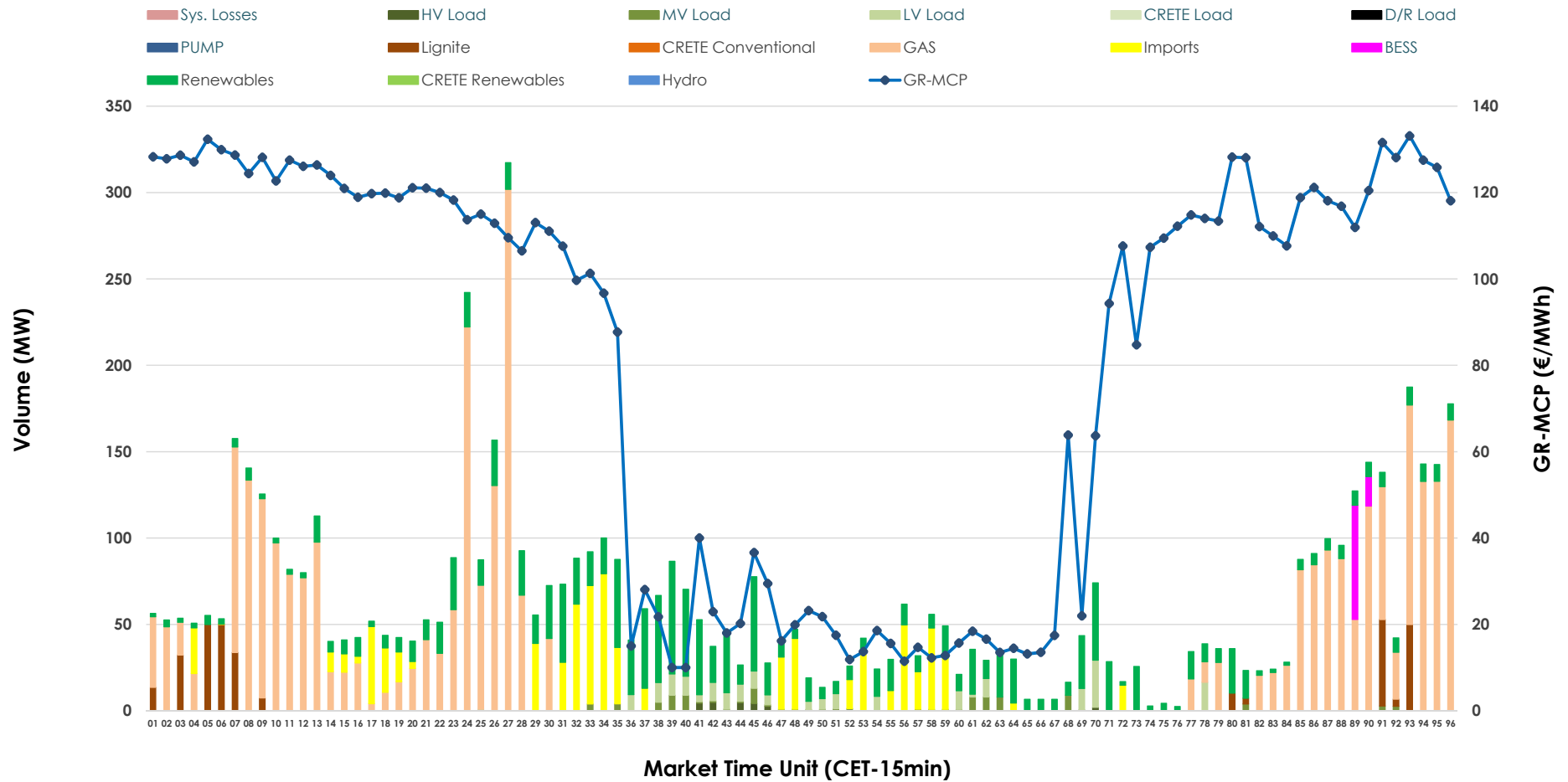


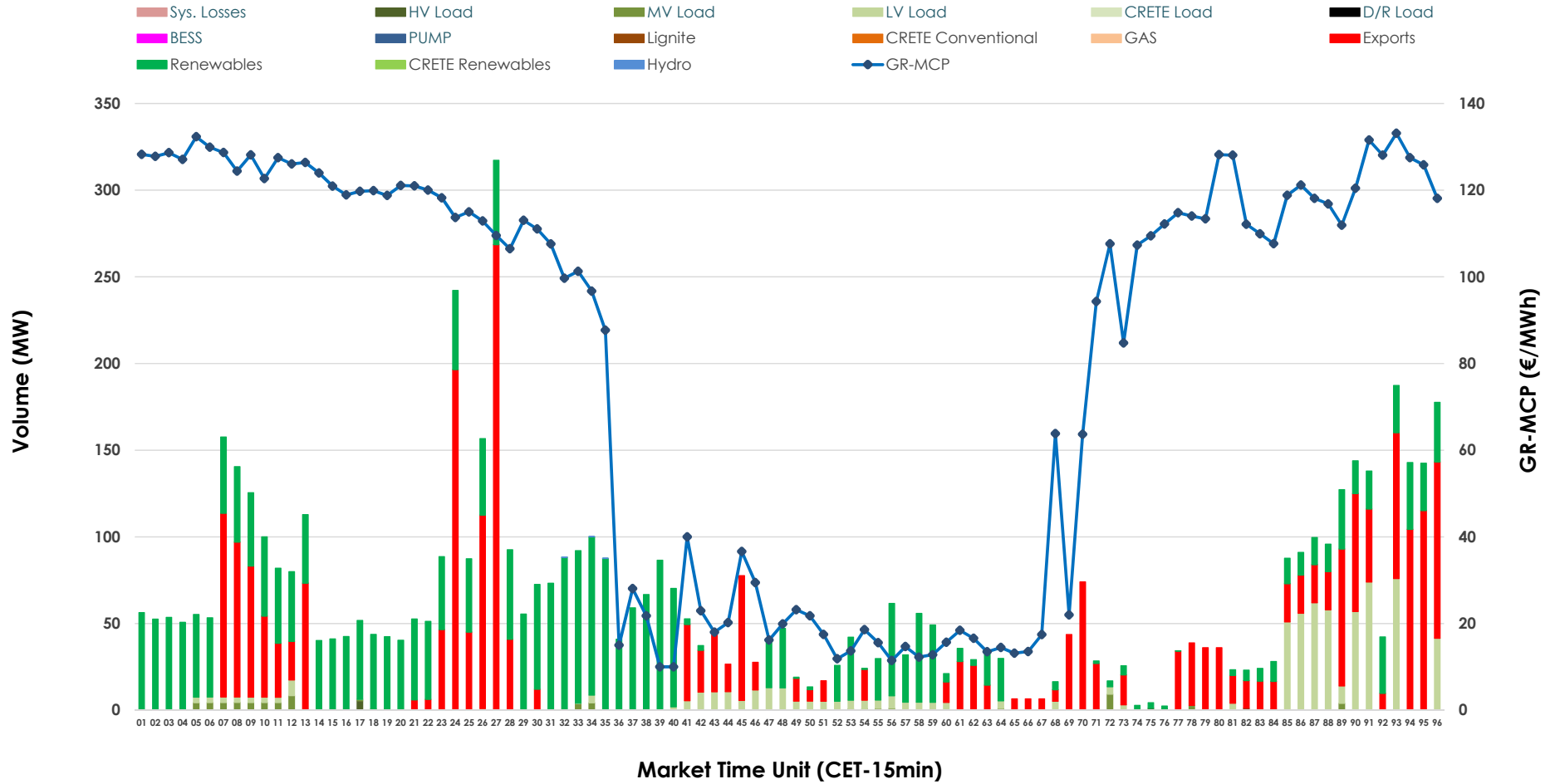


# IDA '2' Market Outlook

16.05.2026 IDA '2' Market - Sell



### 16.05.2026 IDA '2' Market - Buy



### GR Bidding Zone Weekly Figures

Delivery Day	10.05	11.05	12.05	13.05	14.05	15.05	16.05
	👇 -13%	👆 21%	👇 -22%	👆 16%	➡ 0%	👇 -3%	👇 -10%
<b>Avg.MCP (€/MWh)</b>	86.97	105.00	82.23	95.03	94.61	91.42	82.13
<b>Max.MCP (€/MWh)</b>	177.64	191.00	199.04	189.00	232.85	167.09	133.13
<b>Min.MCP (€/MWh)</b>	-0.02	-10.00	-4.56	-11.80	-8.88	-10.00	10.02
	👇 -30%	👇 -11%	👆 103%	👇 -7%	👇 -5%	👇 -7%	👇 -23%
<b>Tot.Vol(GWh)</b>	2.77	2.46	4.98	4.64	4.40	4.07	3.11

### Trades by Order Type

Delivery Day		10.05	11.05	12.05	13.05	14.05	15.05	16.05	
Ord Price Type		Sell & Buy Trades in (GWh) per Price Type							(%)
<b>PPT</b>	(S)	0.000	0.000	0.000	0.000	0.000	0.000	0.000	0.00%
<b>HBD</b>	(S)	0.755	0.988	2.445	1.576	1.666	1.801	1.365	87.67%
<b>BLK</b>	(S)	0.000	0.000	0.000	0.000	0.000	0.000	0.000	0.00%
<b>CPL</b>	(S)	0.629	0.241	0.044	0.743	0.535	0.234	0.192	12.33%
<b>PPT</b>	(B)	0.000	0.000	0.000	0.000	0.000	0.000	0.000	0.00%
<b>HBD</b>	(B)	1.055	1.094	1.663	2.095	1.709	1.718	0.907	58.24%
<b>BLK</b>	(B)	0.000	0.000	0.000	0.000	0.000	0.000	0.000	0.00%
<b>CPL</b>	(B)	0.329	0.135	0.826	0.224	0.491	0.317	0.650	41.76%
		Sell & Buy Orders Traded per Price Type							(%)
<b>PPT</b>	(S)	0	0	0	0	0	0	0	0.00%
<b>HBD</b>	(S)	232	380	343	270	284	268	336	100.00%
<b>BLK</b>	(S)	0	0	0	0	0	0	0	0.00%
<b>PPT</b>	(B)	0	0	0	0	0	0	0	0.00%
<b>HBD</b>	(B)	434	529	453	469	353	517	271	100.00%
<b>BLK</b>	(B)	0	0	0	0	0	0	0	0.00%

- MCP** Market Clearing Price (€/MWh)
- PPT** Priority Price-Taking
- HBD** Hybrid
- BLK** Block
- CPL** Market Coupling Flow

### Trade's Volume Mix

	Sell - MWh	Buy - MWh	
<b>Lignite</b> (4.9%)	76	0	(0.0%)
<b>Crete Conv.</b> (0.0%)	0	0	(0.0%)
<b>Gas</b> (52.3%)	814	0	(0.0%)
<b>Hydro</b> (0.0%)	0	0	(0.0%)
<b>Imports</b> (12.3%)	192		
<b>RES</b> (24.0%)	373	715	(45.9%)
<b>Crete RES</b> (0.0%)	0	0	(0.0%)
<b>BESS</b> (1.3%)	21	0	(0.0%)
<b>HV Load</b> (0.4%)	6	2	(0.2%)
<b>MV Load</b> (1.5%)	24	18	(1.1%)
<b>LV Load</b> (3.3%)	51	172	(11.0%)
<b>Crete Load</b> (0.0%)	0	0	(0.0%)
<b>Pumping</b> (0.0%)	0	0	(0.0%)
<b>Exports</b>		650	(41.8%)
<b>Sys.Losses</b> (0.0%)	0	0	(0.0%)
<b>D/R Load</b> (0.0%)	0	0	(0.0%)

