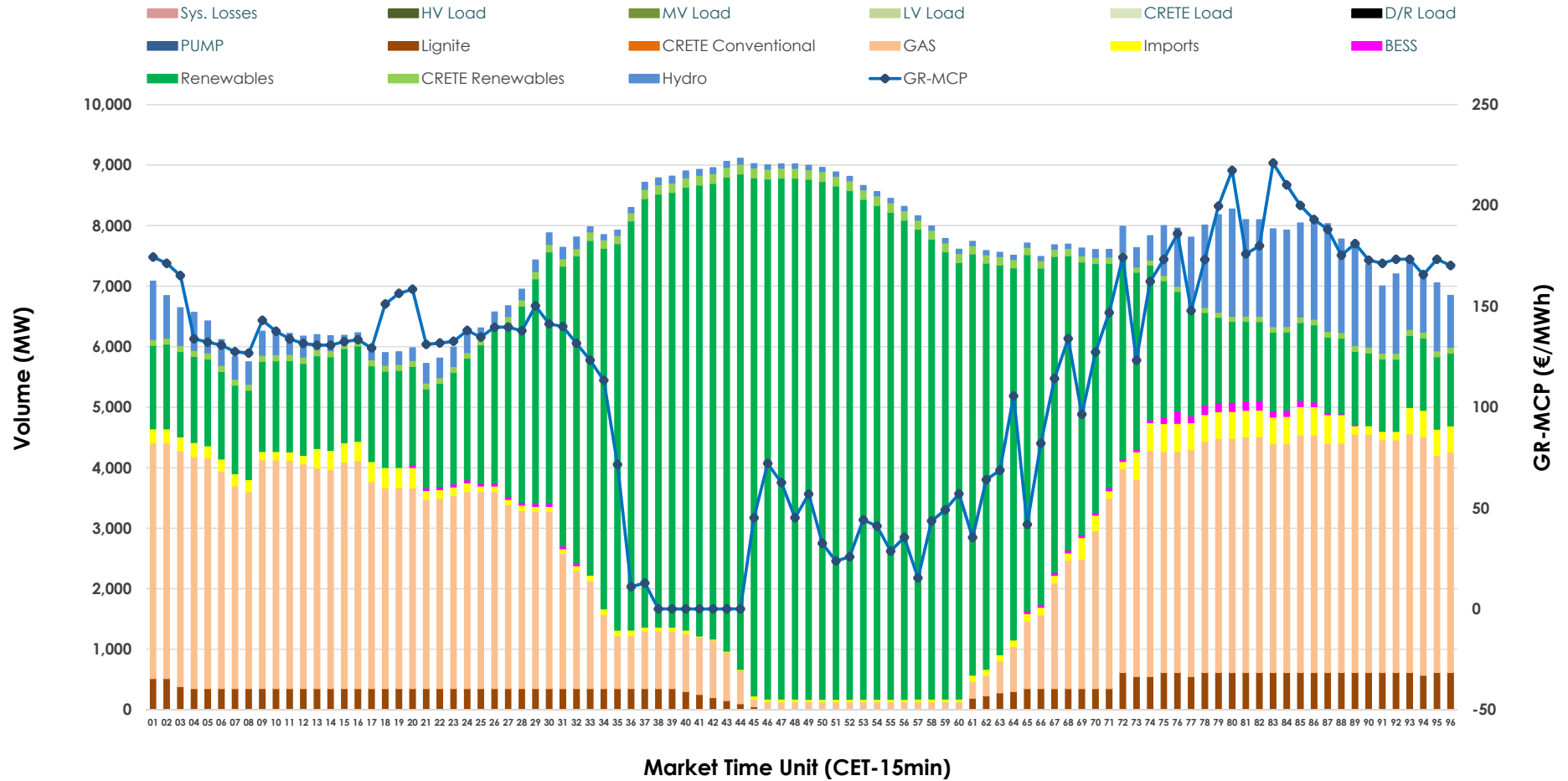


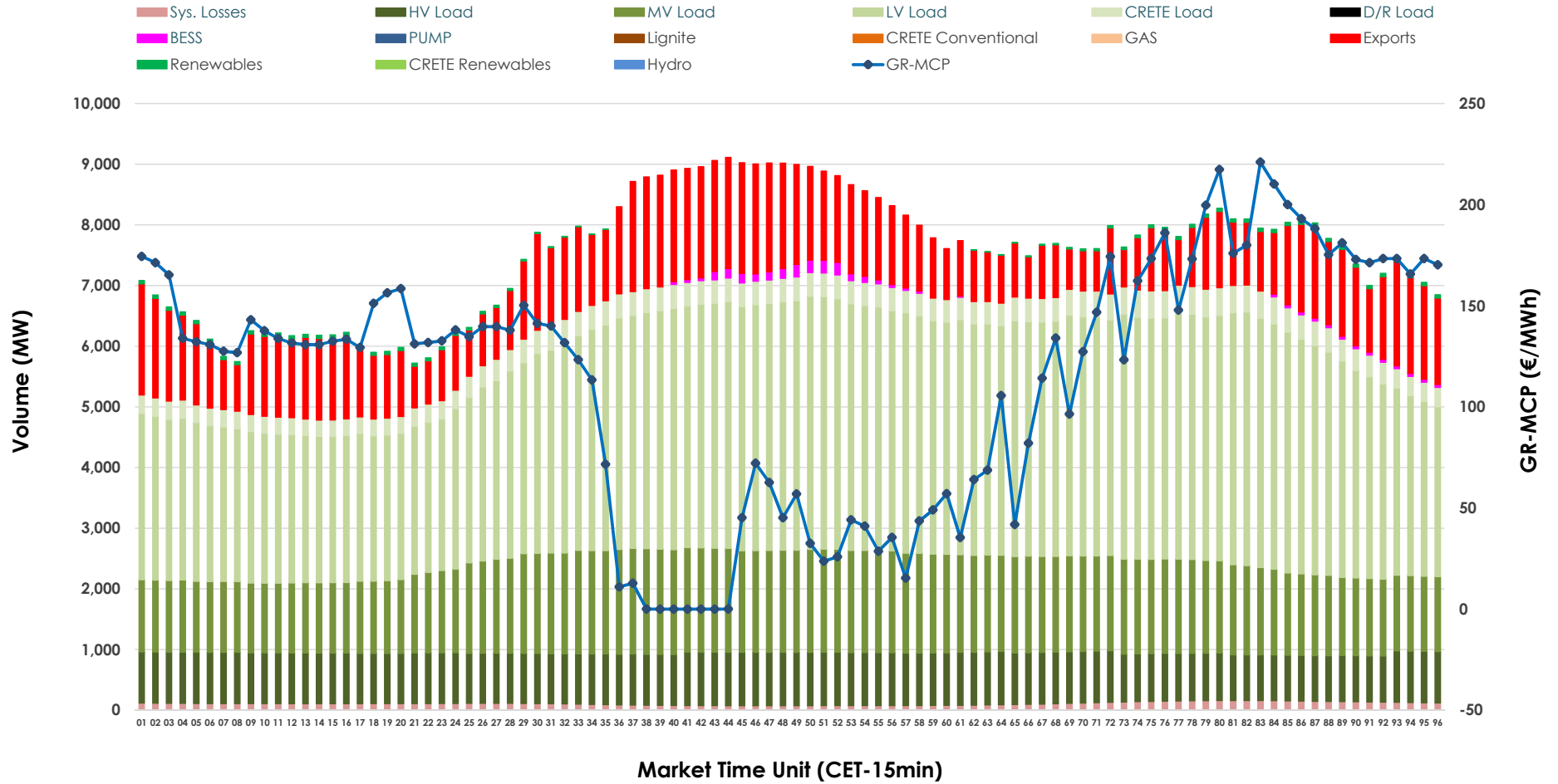


# Day-Ahead Market Outlook

09.06.2026 Day-Ahead Market - Sell



### 09.06.2026 Day-Ahead Market - Buy



### GR Bidding Zone Weekly Figures

Delivery Day	03.06	04.06	05.06	06.06	07.06	08.06	09.06
	👇 -11%	👆 6%	👆 26%	👇 -29%	👇 -29%	👆 65%	👆 20%
<b>Avg.MCP (€/MWh)</b>	85.72	91.05	114.69	81.97	57.86	95.42	114.46
<b>Max.MCP (€/MWh)</b>	150.00	210.77	182.76	156.59	144.30	198.86	221.03
<b>Min.MCP (€/MWh)</b>	0.00	5.44	18.59	0.00	-5.00	-0.01	-0.01
	👆 3%	👇 -11%	👇 -2%	👇 -4%	👇 -9%	👆 26%	👆 3%
<b>Tot.Vol(GWh)</b>	367.73	327.39	321.16	306.90	280.10	351.55	361.76

### Trades by Order Type

Delivery Day		03.06	04.06	05.06	06.06	07.06	08.06	09.06	
<b>Ord Price Type</b>		<b>Sell &amp; Buy Trades in (GWh) per Price Type</b>							<b>(%)</b>
<b>PPT</b>	(S)	68.089	64.441	58.338	56.563	59.103	72.630	65.539	36.23%
<b>HBD</b>	(S)	78.424	66.852	70.853	63.063	47.065	72.260	79.650	44.03%
<b>BLK</b>	(S)	37.350	29.365	28.875	30.143	21.989	30.502	33.822	18.70%
<b>CPL</b>	(S)	0.000	3.038	2.516	3.683	11.896	0.382	1.870	1.03%
<b>PPT</b>	(B)	15.118	16.151	15.503	15.317	16.008	16.525	15.928	8.81%
<b>HBD</b>	(B)	142.718	141.396	136.467	128.886	123.201	142.899	146.848	81.18%
<b>BLK</b>	(B)	0.000	0.000	0.000	0.000	0.000	0.000	0.000	0.00%
<b>CPL</b>	(B)	26.028	6.148	8.612	9.249	0.843	16.351	18.105	10.01%
		<b>Sell &amp; Buy Orders Traded per Price Type</b>							<b>(%)</b>
<b>PPT</b>	(S)	1740	1703	1718	1725	1683	1794	1689	31.10%
<b>HBD</b>	(S)	3314	3595	3574	3457	2774	3328	3724	68.57%
<b>BLK</b>	(S)	17	13	11	13	10	14	18	0.33%
<b>PPT</b>	(B)	2388	2413	2359	2329	2349	2408	2379	37.66%
<b>HBD</b>	(B)	3986	4066	3898	3900	3851	3616	3938	62.34%
<b>BLK</b>	(B)	0	0	0	0	0	0	0	0.00%

- MCP** Market Clearing Price (€/MWh)
- PPT** Priority Price-Taking
- HBD** Hybrid
- BLK** Block
- CPL** Market Coupling Flow

### Trade's Volume Mix

	Sell - MWh	Buy - MWh	
<b>Lignite</b> (4.7%)	8,420	0	(0.0%)
<b>Crete Conv.</b> (0.0%)	0	0	(0.0%)
<b>Gas</b> (32.1%)	58,062	0	(0.0%)
<b>Hydro</b> (6.2%)	11,166	0	(0.0%)
<b>Imports</b> (2.6%)	4,750		
<b>RES</b> (52.5%)	94,937	753	(0.4%)
<b>Crete RES</b> (1.6%)	2,861	0	(0.0%)
<b>BESS</b> (0.4%)	685	723	(0.4%)
<b>HV Load</b> (0.0%)	0	19,995	(11.1%)
<b>MV Load</b> (0.0%)	0	35,414	(19.6%)
<b>LV Load</b> (0.0%)	0	82,898	(45.8%)
<b>Crete Load</b> (0.0%)	0	8,804	(4.9%)
<b>Pumping</b> (0.0%)	0	0	(0.0%)
<b>Exports</b>		29,684	(16.4%)
<b>Sys.Losses</b> (0.0%)	0	2,610	(1.4%)
<b>D/R Load</b> (0.0%)	0	0	(0.0%)

