

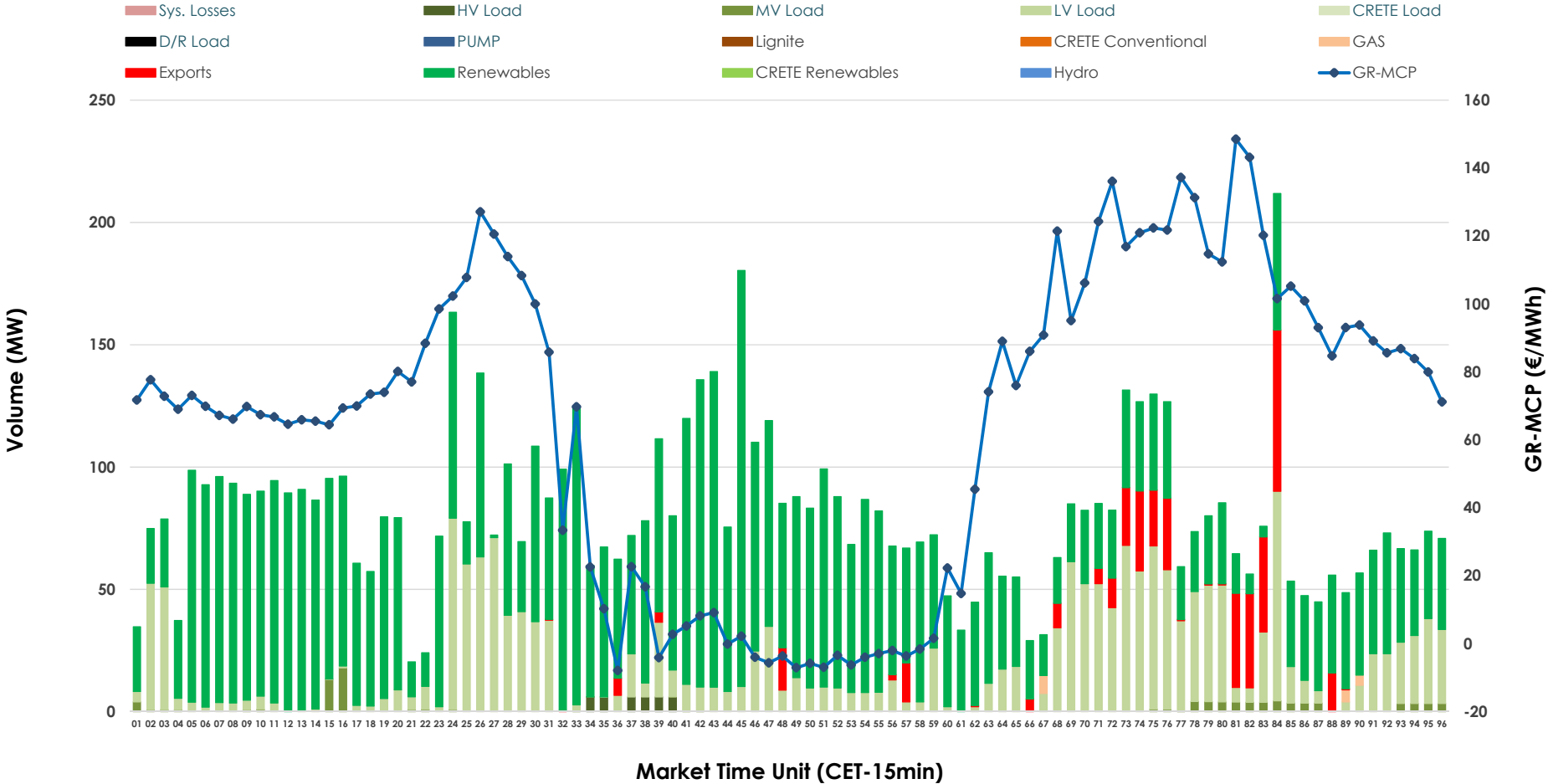


IDA '2' Market Outlook

27.02.2026 IDA '2' Market - Sell



27.02.2026 IDA '2' Market - Buy



GR Bidding Zone Weekly Figures

Delivery Day	21.02	22.02	23.02	24.02	25.02	26.02	27.02
	👉 -15%	👇 -39%	👈 54%	👉 18%	👉 -15%	👉 -4%	👈 25%
Avg.MCP (€/MWh)	58.00	35.43	54.51	64.22	54.61	52.41	65.67
Max.MCP (€/MWh)	106.11	105.42	141.61	140.04	155.01	130.70	148.51
Min.MCP (€/MWh)	-8.01	-15.00	-25.00	-12.33	-12.63	-35.00	-7.89
	👇 -35%	👈 44%	👈 33%	👉 -27%	👉 -8%	👈 3%	👈 9%
Tot.Vol(GWh)	2.70	3.90	5.19	3.77	3.49	3.60	3.92

Trades by Order Type

Delivery Day		21.02	22.02	23.02	24.02	25.02	26.02	27.02	
Ord Price Type		Sell & Buy Trades in (GWh) per Price Type							(%)
PPT	(S)	0.000	0.000	0.000	0.000	0.000	0.000	0.000	0.00%
HBD	(S)	0.992	1.726	1.631	1.491	1.499	1.717	0.956	48.78%
BLK	(S)	0.000	0.000	0.000	0.000	0.000	0.000	0.000	0.00%
CPL	(S)	0.361	0.222	0.967	0.394	0.244	0.083	1.004	51.22%
PPT	(B)	0.000	0.000	0.000	0.000	0.000	0.000	0.000	0.00%
HBD	(B)	1.322	1.654	2.441	1.390	1.471	1.682	1.863	95.04%
BLK	(B)	0.000	0.000	0.000	0.000	0.000	0.000	0.000	0.00%
CPL	(B)	0.031	0.294	0.157	0.496	0.273	0.117	0.097	4.96%
		Sell & Buy Orders Traded per Price Type							(%)
PPT	(S)	0	0	0	0	0	0	0	0.00%
HBD	(S)	276	137	271	234	268	254	213	100.00%
BLK	(S)	0	0	0	0	0	0	0	0.00%
PPT	(B)	0	0	0	0	0	0	0	0.00%
HBD	(B)	525	528	382	368	415	474	492	100.00%
BLK	(B)	0	0	0	0	0	0	0	0.00%

- MCP** Market Clearing Price (€/MWh)
- PPT** Priority Price-Taking
- HBD** Hybrid
- BLK** Block
- CPL** Market Coupling Flow

Trade's Volume Mix

	Sell - MWh	Buy - MWh	
Lignite	0	0	(0.0%)
Crete Conv.	0	0	(0.0%)
Gas	236	4	(0.2%)
Hydro	24	0	(0.0%)
Imports	1,004		
RES	507	1,333	(68.0%)
Crete RES	0	0	(0.0%)
HV Load	42	9	(0.5%)
MV Load	7	24	(1.2%)
LV Load	140	493	(25.2%)
Crete Load	0	0	(0.0%)
Pumping	0	0	(0.0%)
Exports		97	(5.0%)
Sys.Losses	0	0	(0.0%)
D/R Load	0	0	(0.0%)

