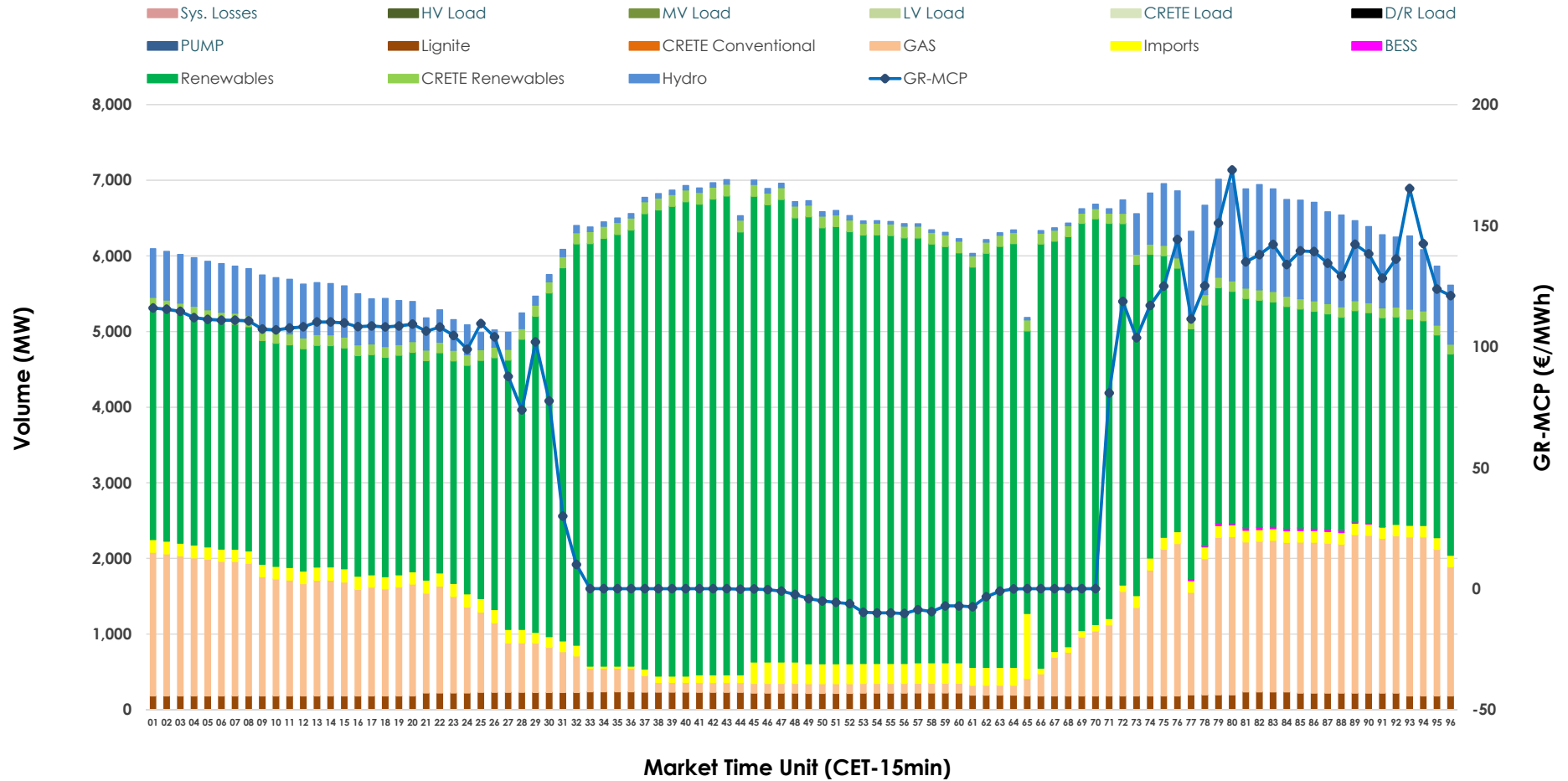


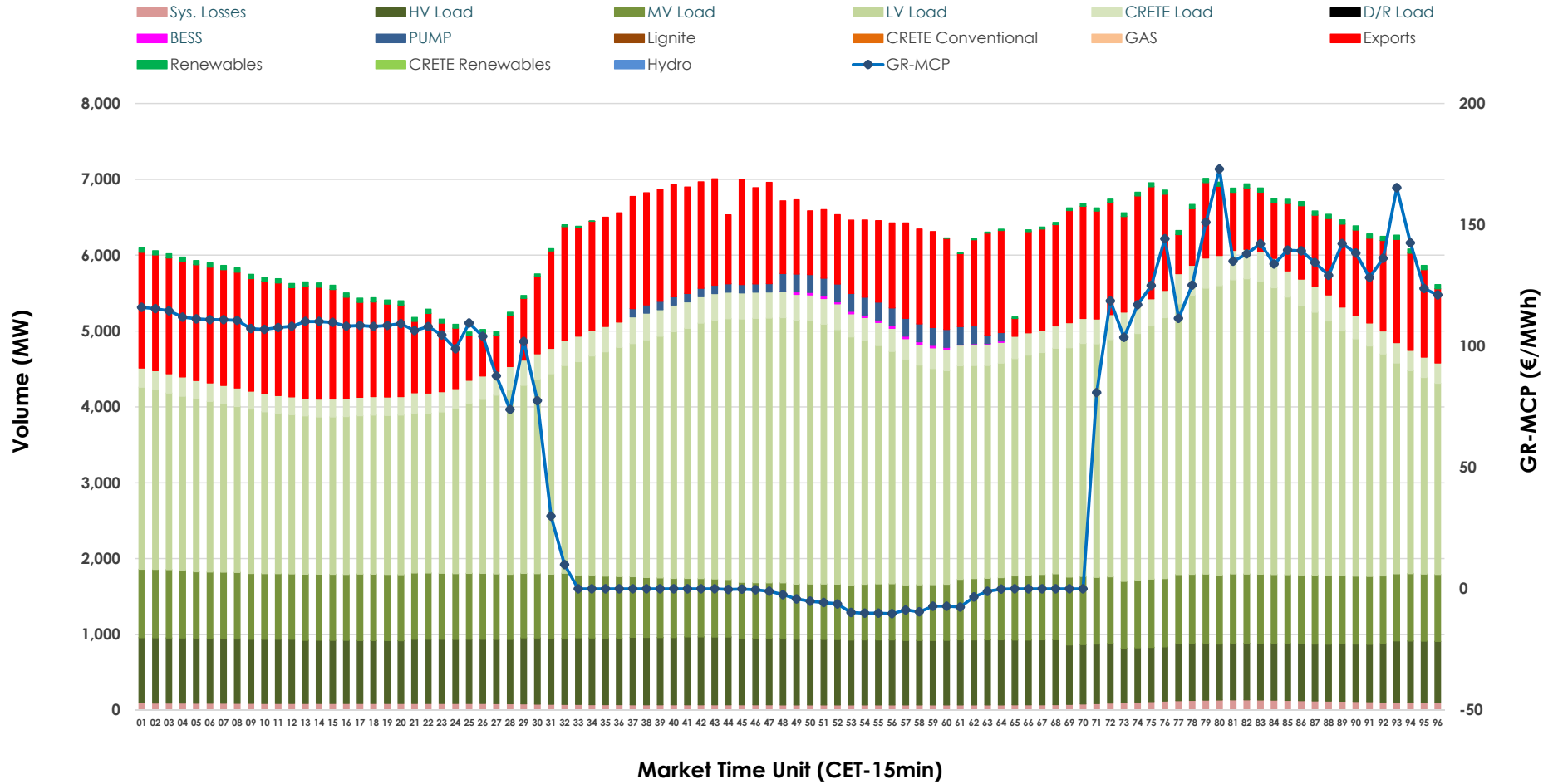


Day-Ahead Market Outlook

03.05.2026 Day-Ahead Market - Sell



03.05.2026 Day-Ahead Market - Buy



GR Bidding Zone Weekly Figures

Delivery Day	27.04	28.04	29.04	30.04	01.05	02.05	03.05
	↑ 64%	↓ -5%	↔ 28%	↓ -11%	↓ -37%	↔ 13%	↔ 11%
Avg.MCP (€/MWh)	80.06	75.66	97.01	86.43	54.50	61.40	68.20
Max.MCP (€/MWh)	221.32	195.51	223.89	213.40	120.80	182.68	172.97
Min.MCP (€/MWh)	-2.01	-2.50	-0.01	0.01	0.00	-5.00	-10.25
	↔ 20%	↔ 2%	→ 0%	↓ -2%	↔ 5%	↔ 4%	↓ -2%
Tot.Vol(GWh)	278.90	285.73	285.20	280.87	294.18	304.64	299.12

Trades by Order Type

Delivery Day		27.04	28.04	29.04	30.04	01.05	02.05	03.05	
Ord Price Type		Sell & Buy Trades in (GWh) per Price Type							(%)
PPT	(S)	58.220	56.503	50.135	49.397	70.948	77.082	71.520	47.82%
HBD	(S)	58.208	56.663	60.517	60.205	66.512	65.566	64.433	43.08%
BLK	(S)	22.261	29.032	31.075	23.319	9.630	9.306	13.409	8.97%
CPL	(S)	0.761	0.665	0.873	7.514	0.000	0.367	0.197	0.13%
PPT	(B)	13.139	12.556	12.132	12.191	13.282	14.496	13.234	8.85%
HBD	(B)	115.820	118.971	121.569	121.751	114.864	118.407	117.163	78.34%
BLK	(B)	0.000	0.000	0.000	0.000	0.000	0.000	0.000	0.00%
CPL	(B)	10.491	11.337	8.899	6.492	18.943	19.418	19.161	12.81%
		Sell & Buy Orders Traded per Price Type							(%)
PPT	(S)	1641	1657	1691	1674	1559	1484	1518	36.38%
HBD	(S)	2690	2787	3191	3352	2875	2577	2646	63.41%
BLK	(S)	11	13	15	9	9	8	9	0.22%
PPT	(B)	2307	2293	2311	2265	2294	2263	2266	36.50%
HBD	(B)	3817	4129	4038	4187	4191	3891	3942	63.50%
BLK	(B)	0	0	0	0	0	0	0	0.00%

- MCP** Market Clearing Price (€/MWh)
- PPT** Priority Price-Taking
- HBD** Hybrid
- BLK** Block
- CPL** Market Coupling Flow

Trade's Volume Mix

		Sell - MWh	Buy - MWh	
Lignite	(3.3%)	4,972	0	(0.0%)
Crete Conv.	(0.0%)	0	0	(0.0%)
Gas	(16.7%)	24,951	0	(0.0%)
Hydro	(7.3%)	10,853	0	(0.0%)
Imports	(2.8%)	4,152		
RES	(67.6%)	101,051	793	(0.5%)
Crete RES	(2.3%)	3,483	0	(0.0%)
BESS	(0.1%)	97	115	(0.1%)
HV Load	(0.0%)	0	19,916	(13.3%)
MV Load	(0.0%)	0	20,267	(13.6%)
LV Load	(0.0%)	0	69,296	(46.3%)
Crete Load	(0.0%)	0	7,369	(4.9%)
Pumping	(0.0%)	0	1,239	(0.8%)
Exports			28,411	(19.0%)
Sys.Losses	(0.0%)	0	2,152	(1.4%)
D/R Load	(0.0%)	0	0	(0.0%)

