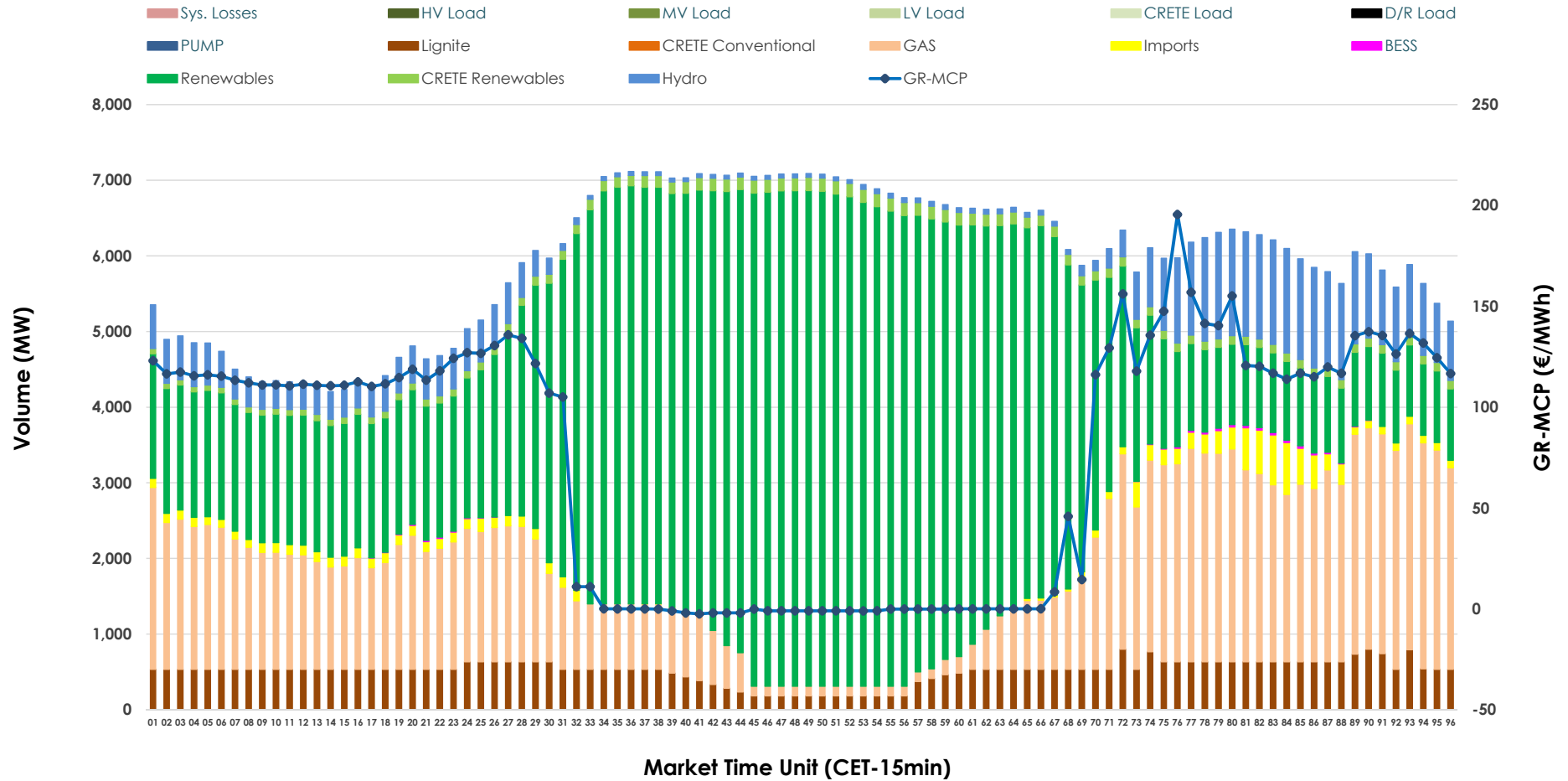


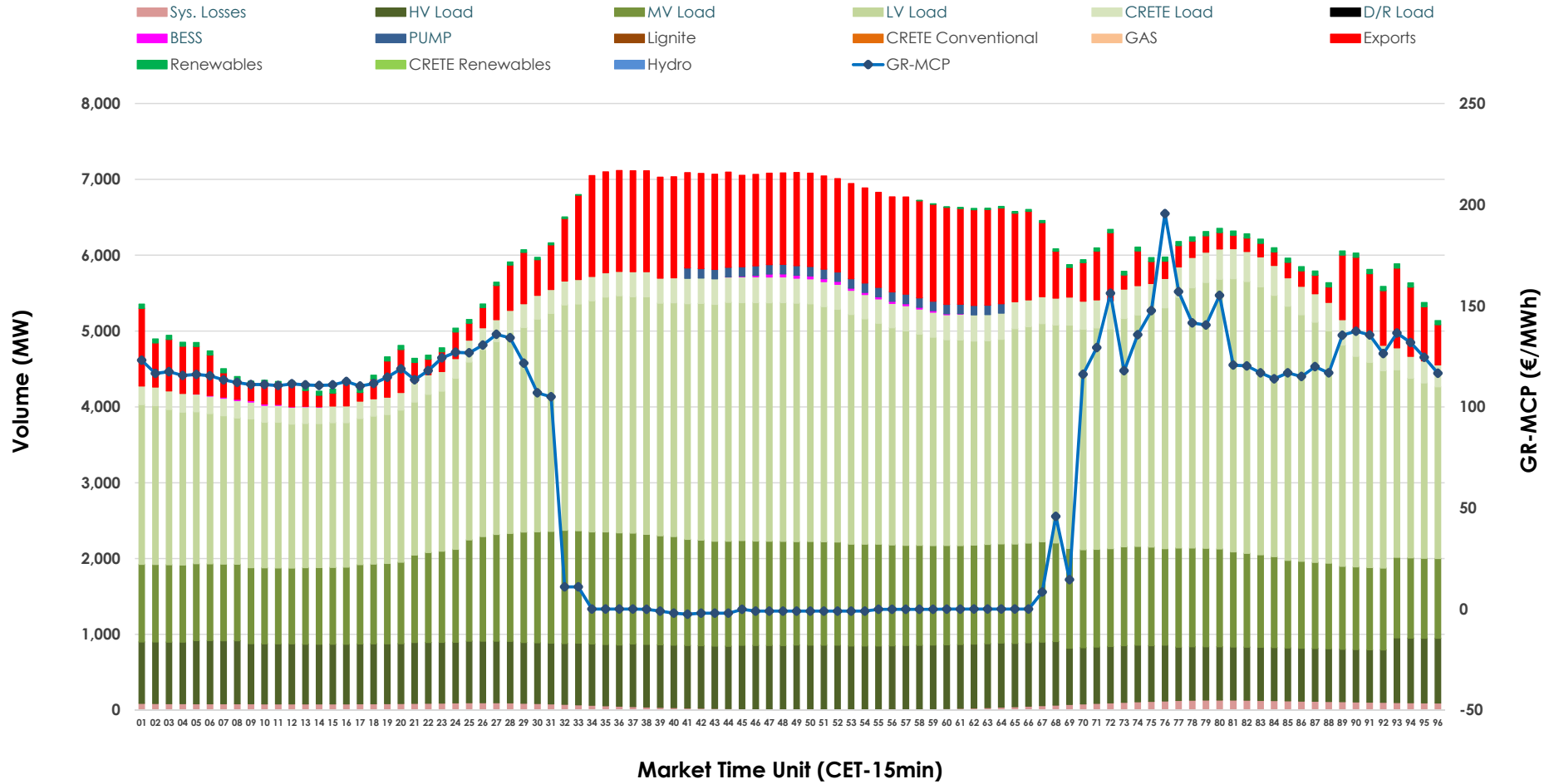


Day-Ahead Market Outlook

28.04.2026 Day-Ahead Market - Sell



28.04.2026 Day-Ahead Market - Buy



GR Bidding Zone Weekly Figures

Delivery Day	22.04	23.04	24.04	25.04	26.04	27.04	28.04
	↑ 38%	↓ -23%	↓ -13%	↓ -27%	↓ -12%	↑ 64%	↓ -5%
Avg.MCP (€/MWh)	114.50	88.12	76.59	55.72	48.85	80.06	75.66
Max.MCP (€/MWh)	292.39	238.11	232.13	186.45	137.70	221.32	195.51
Min.MCP (€/MWh)	9.20	0.00	-19.68	-50.00	-50.00	-2.01	-2.50
	↓ -5%	↔ 8%	↓ -6%	↓ -10%	↓ -10%	↔ 20%	↔ 2%
Tot.Vol(GWh)	286.00	307.65	289.22	259.84	232.86	278.90	285.73

Trades by Order Type

Delivery Day		22.04	23.04	24.04	25.04	26.04	27.04	28.04	
Ord Price Type		Sell & Buy Trades in (GWh) per Price Type							(%)
PPT	(S)	52.662	53.859	58.112	61.249	48.107	58.220	56.503	39.55%
HBD	(S)	54.230	64.423	56.577	41.071	34.796	58.208	56.663	39.66%
BLK	(S)	26.046	27.200	26.900	16.577	15.757	22.261	29.032	20.32%
CPL	(S)	10.061	8.343	3.021	11.024	17.768	0.761	0.665	0.47%
PPT	(B)	12.705	12.529	12.315	12.979	12.240	13.139	12.556	8.79%
HBD	(B)	123.424	138.995	124.015	113.788	102.435	115.820	118.971	83.28%
BLK	(B)	0.000	0.000	0.000	0.000	0.000	0.000	0.000	0.00%
CPL	(B)	6.871	2.301	8.279	3.154	1.752	10.491	11.337	7.94%
		Sell & Buy Orders Traded per Price Type							(%)
PPT	(S)	1670	1645	1653	1549	1592	1641	1657	37.18%
HBD	(S)	3209	3014	2583	2261	2302	2690	2787	62.53%
BLK	(S)	11	14	15	8	6	11	13	0.29%
PPT	(B)	2317	2217	2275	2245	2258	2307	2293	35.71%
HBD	(B)	4081	4532	4111	4272	3997	3817	4129	64.29%
BLK	(B)	0	0	0	0	0	0	0	0.00%

- MCP** Market Clearing Price (€/MWh)
- PPT** Priority Price-Taking
- HBD** Hybrid
- BLK** Block
- CPL** Market Coupling Flow

Trade's Volume Mix

	Sell - MWh	Buy - MWh	
Lignite (8.6%)	12,267	0	(0.0%)
Crete Conv. (0.0%)	0	0	(0.0%)
Gas (24.7%)	35,225	0	(0.0%)
Hydro (7.7%)	11,043	0	(0.0%)
Imports (2.0%)	2,826		
RES (54.9%)	78,449	797	(0.6%)
Crete RES (2.1%)	2,932	0	(0.0%)
BESS (0.1%)	121	141	(0.1%)
HV Load (0.0%)	0	19,047	(13.3%)
MV Load (0.0%)	0	29,895	(20.9%)
LV Load (0.0%)	0	65,383	(45.8%)
Crete Load (0.0%)	0	7,570	(5.3%)
Pumping (0.0%)	0	753	(0.5%)
Exports		17,492	(12.2%)
Sys.Losses (0.0%)	0	1,785	(1.2%)
D/R Load (0.0%)	0	0	(0.0%)

