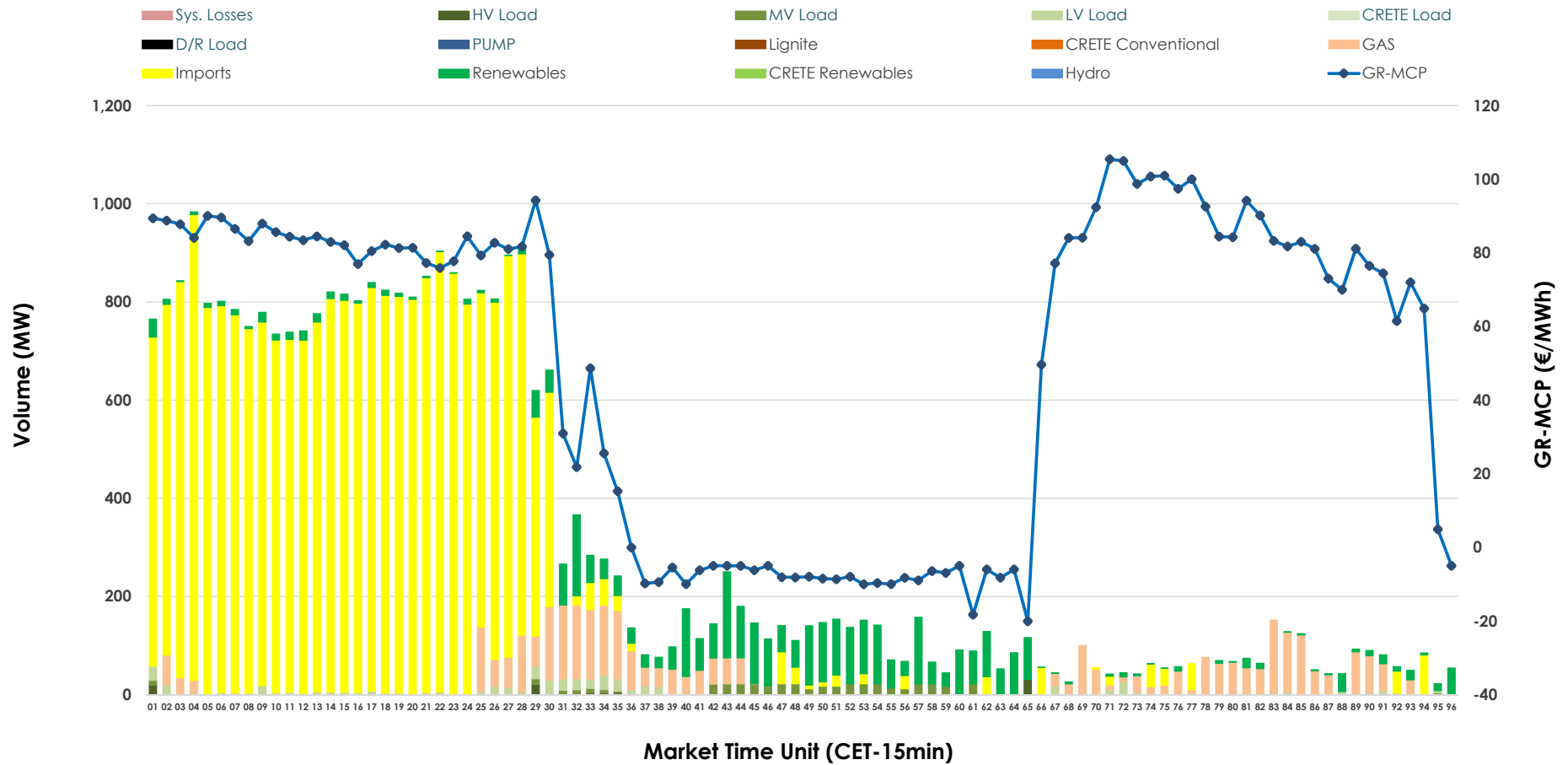


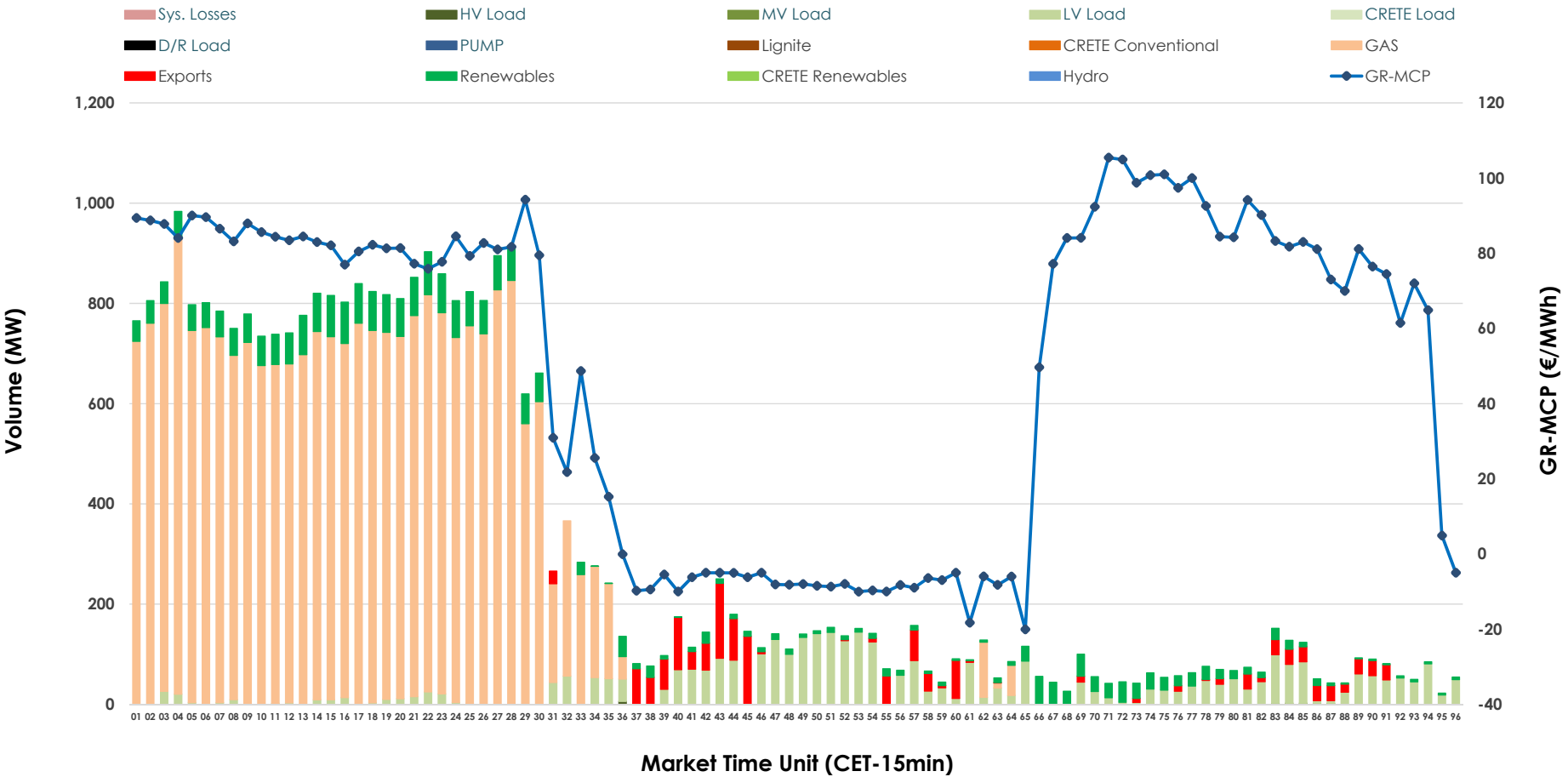


IDA '2' Market Outlook

28.02.2026 IDA '2' Market - Sell



28.02.2026 IDA '2' Market - Buy



GR Bidding Zone Weekly Figures

Delivery Day	22.02	23.02	24.02	25.02	26.02	27.02	28.02
	↓ -39%	↑ 54%	↔ 18%	↓ -15%	↓ -4%	↔ 25%	↓ -23%
Avg.MCP (€/MWh)	35.43	54.51	64.22	54.61	52.41	65.67	50.54
Max.MCP (€/MWh)	105.42	141.61	140.04	155.01	130.70	148.51	105.45
Min.MCP (€/MWh)	-15.00	-25.00	-12.33	-12.63	-35.00	-7.89	-20.07
	↑ 44%	↑ 33%	↓ -27%	↓ -8%	↔ 3%	↔ 9%	↑ 299%
Tot.Vol(GWh)	3.90	5.19	3.77	3.49	3.60	3.92	15.63

Trades by Order Type

Delivery Day	22.02	23.02	24.02	25.02	26.02	27.02	28.02	
Ord Price Type	Sell & Buy Trades in (GWh) per Price Type							(%)
PPT (S)	0.000	0.000	0.000	0.000	0.000	0.000	0.000	0.00%
HBD (S)	1.726	1.631	1.491	1.499	1.717	0.956	1.932	24.72%
BLK (S)	0.000	0.000	0.000	0.000	0.000	0.000	0.000	0.00%
CPL (S)	0.222	0.967	0.394	0.244	0.083	1.004	5.884	75.28%
PPT (B)	0.000	0.000	0.000	0.000	0.000	0.000	0.000	0.00%
HBD (B)	1.654	2.441	1.390	1.471	1.682	1.863	7.476	95.65%
BLK (B)	0.000	0.000	0.000	0.000	0.000	0.000	0.000	0.00%
CPL (B)	0.294	0.157	0.496	0.273	0.117	0.097	0.340	4.35%
Ord Price Type	Sell & Buy Orders Traded per Price Type							(%)
PPT (S)	0	0	0	0	0	0	0	0.00%
HBD (S)	137	271	234	268	254	213	205	100.00%
BLK (S)	0	0	0	0	0	0	0	0.00%
PPT (B)	0	0	0	0	0	0	0	0.00%
HBD (B)	528	382	368	415	474	492	261	100.00%
BLK (B)	0	0	0	0	0	0	0	0.00%

- MCP** Market Clearing Price (€/MWh)
- PPT** Priority Price-Taking
- HBD** Hybrid
- BLK** Block
- CPL** Market Coupling Flow

Trade's Volume Mix

	Sell - MWh	Buy - MWh	
Lignite (0.0%)	0	0	(0.0%)
Crete Conv. (0.0%)	0	0	(0.0%)
Gas (10.4%)	811	5,857	(74.9%)
Hydro (0.0%)	0	0	(0.0%)
Imports (75.3%)	5,884		
RES (11.1%)	865	716	(9.2%)
Crete RES (0.0%)	0	0	(0.0%)
HV Load (0.3%)	21	2	(0.0%)
MV Load (1.4%)	108	3	(0.0%)
LV Load (1.6%)	127	898	(11.5%)
Crete Load (0.0%)	0	0	(0.0%)
Pumping (0.0%)	0	0	(0.0%)
Exports		340	(4.4%)
Sys.Losses (0.0%)	0	0	(0.0%)
D/R Load (0.0%)	0	0	(0.0%)

