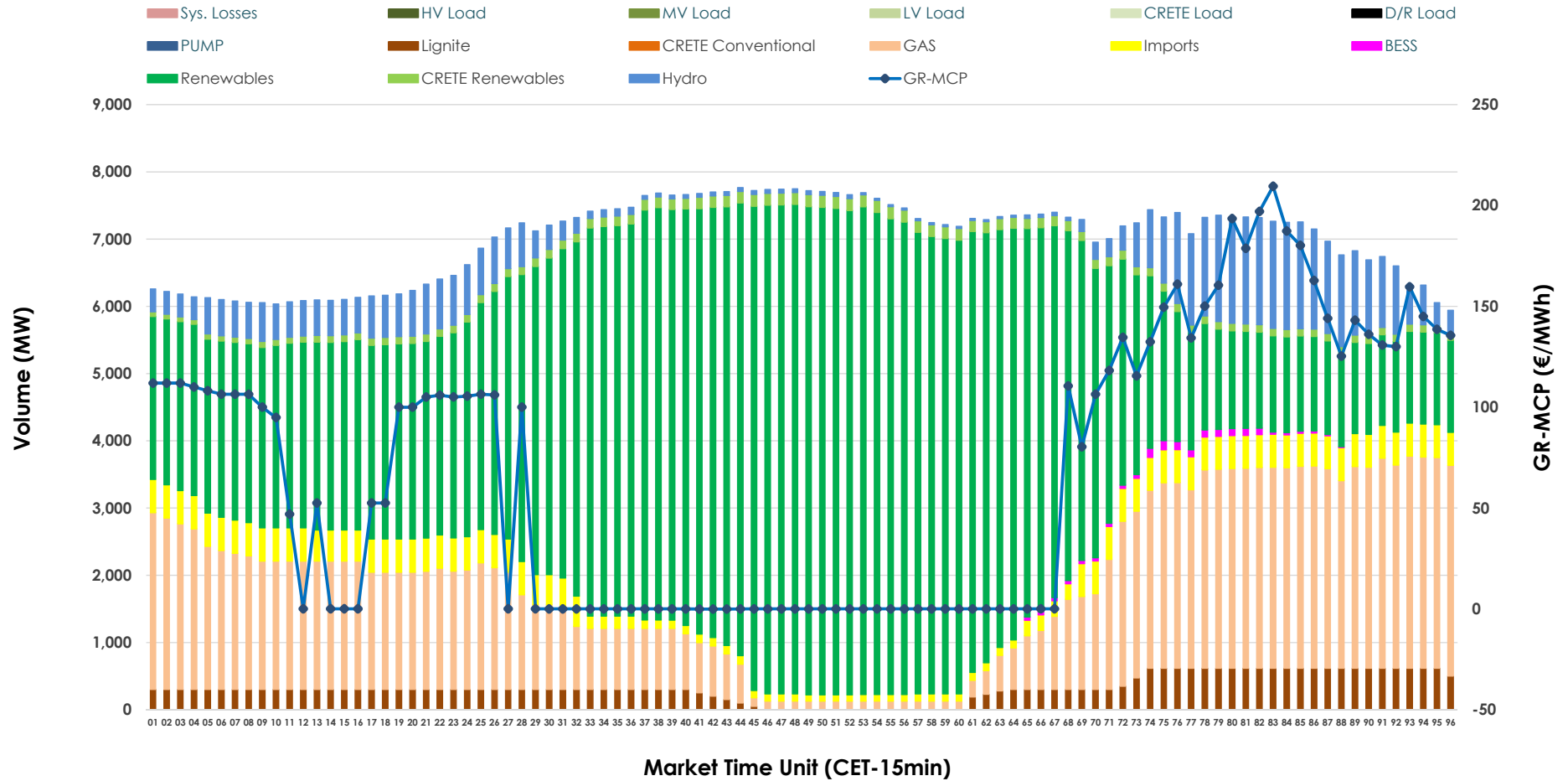


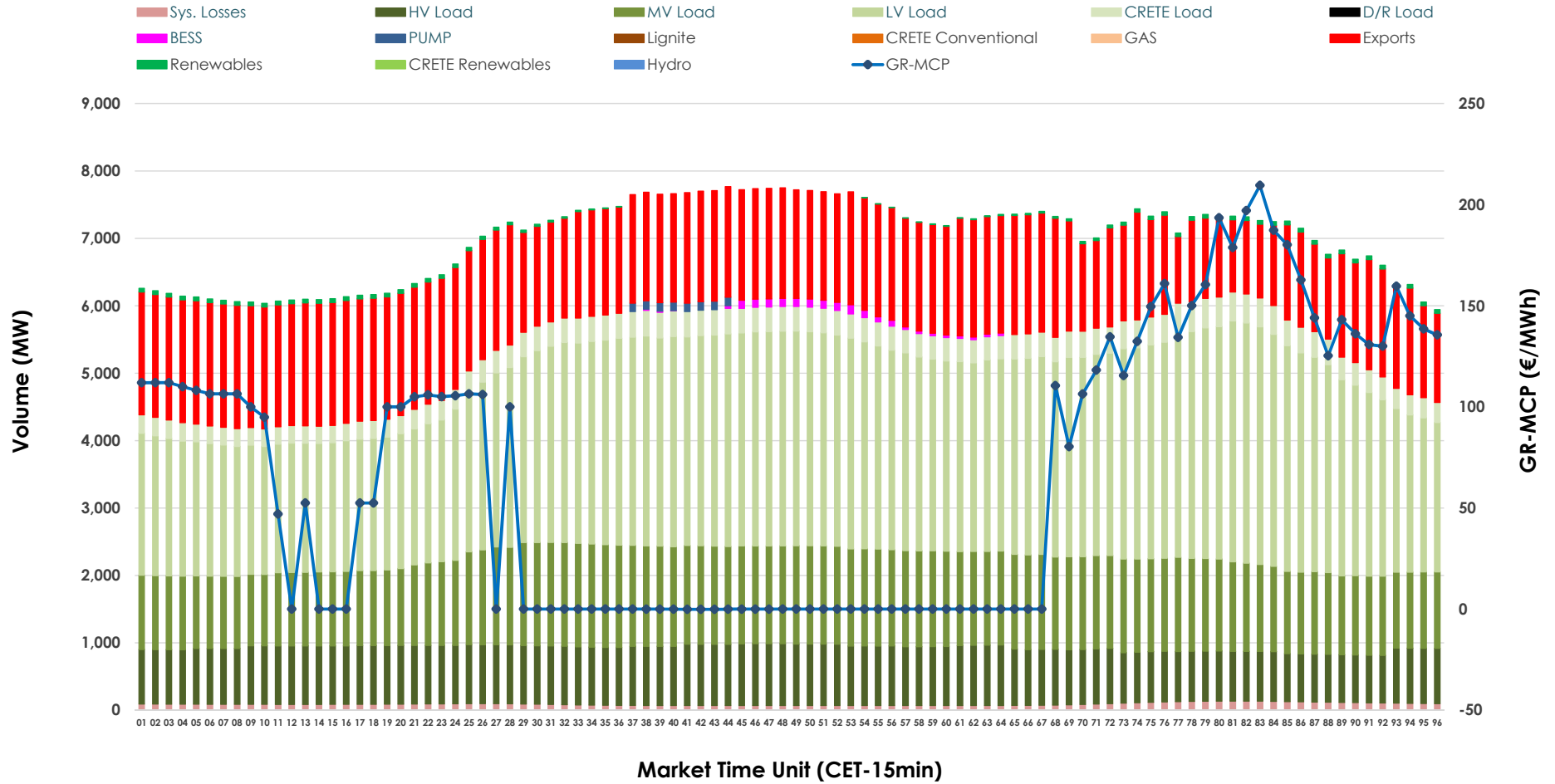


# Day-Ahead Market Outlook

20.05.2026 Day-Ahead Market - Sell



## 20.05.2026 Day-Ahead Market - Buy



### GR Bidding Zone Weekly Figures

Delivery Day	14.05	15.05	16.05	17.05	18.05	19.05	20.05
	➔ -1%	⬇️ -3%	⬇️ -15%	⬇️ -4%	⬆️ 32%	⬆️ 30%	⬇️ -48%
<b>Avg.MCP (€/MWh)</b>	94.38	91.65	78.36	75.20	99.62	129.48	67.26
<b>Max.MCP (€/MWh)</b>	236.73	170.33	136.89	168.83	257.62	233.28	209.51
<b>Min.MCP (€/MWh)</b>	0.00	0.00	0.02	-1.01	0.00	75.00	-0.10
	⬆️ 2%	⬇️ -2%	⬇️ -10%	⬆️ 1%	⬆️ 8%	⬇️ -3%	⬆️ 5%
<b>Tot.Vol(GWh)</b>	342.44	335.47	303.35	306.87	331.83	320.85	336.14

### Trades by Order Type

Delivery Day		14.05	15.05	16.05	17.05	18.05	19.05	20.05	
<b>Ord Price Type</b>		<b>Sell &amp; Buy Trades in (GWh) per Price Type</b>							<b>(%)</b>
<b>PPT</b>	(S)	71.021	68.237	63.469	71.721	64.313	59.800	73.927	43.99%
<b>HBD</b>	(S)	72.208	72.381	66.338	64.208	71.127	71.266	68.471	40.74%
<b>BLK</b>	(S)	27.992	27.116	21.857	17.507	30.478	28.557	25.673	15.28%
<b>CPL</b>	(S)	0.000	0.000	0.013	0.000	0.000	0.803	0.000	0.00%
<b>PPT</b>	(B)	15.696	16.044	14.299	13.770	14.491	14.694	14.511	8.63%
<b>HBD</b>	(B)	127.499	125.379	121.066	111.681	121.731	124.344	126.040	74.99%
<b>BLK</b>	(B)	0.000	0.000	0.000	0.000	0.000	0.000	0.000	0.00%
<b>CPL</b>	(B)	28.027	26.310	16.311	27.985	29.695	21.389	27.520	16.37%
		<b>Sell &amp; Buy Orders Traded per Price Type</b>							<b>(%)</b>
<b>PPT</b>	(S)	1757	1720	1725	1722	1768	1646	1694	34.87%
<b>HBD</b>	(S)	3419	3324	3475	2870	3267	3835	3156	64.97%
<b>BLK</b>	(S)	9	8	8	11	10	8	8	0.16%
<b>PPT</b>	(B)	2353	2357	2402	2387	2317	2417	2307	36.64%
<b>HBD</b>	(B)	4071	4036	3969	3918	3696	3805	3990	63.36%
<b>BLK</b>	(B)	0	0	0	0	0	0	0	0.00%

**MCP** Market Clearing Price (€/MWh)  
**PPT** Priority Price-Taking  
**HBD** Hybrid  
**BLK** Block  
**CPL** Market Coupling Flow

### Trade's Volume Mix

	Sell - MWh	Buy - MWh	
<b>Lignite</b> (4.6%)	7,706	0	(0.0%)
<b>Crete Conv.</b> (0.0%)	0	0	(0.0%)
<b>Gas</b> (23.0%)	38,675	0	(0.0%)
<b>Hydro</b> (7.2%)	12,140	0	(0.0%)
<b>Imports</b> (5.1%)	8,498		
<b>RES</b> (58.0%)	97,557	797	(0.5%)
<b>Crete RES</b> (1.8%)	3,093	0	(0.0%)
<b>BESS</b> (0.2%)	402	439	(0.3%)
<b>HV Load</b> (0.0%)	0	20,087	(12.0%)
<b>MV Load</b> (0.0%)	0	31,647	(18.8%)
<b>LV Load</b> (0.0%)	0	65,882	(39.2%)
<b>Crete Load</b> (0.0%)	0	8,264	(4.9%)
<b>Pumping</b> (0.0%)	0	250	(0.1%)
<b>Exports</b>		38,531	(22.9%)
<b>Sys.Losses</b> (0.0%)	0	2,173	(1.3%)
<b>D/R Load</b> (0.0%)	0	0	(0.0%)

