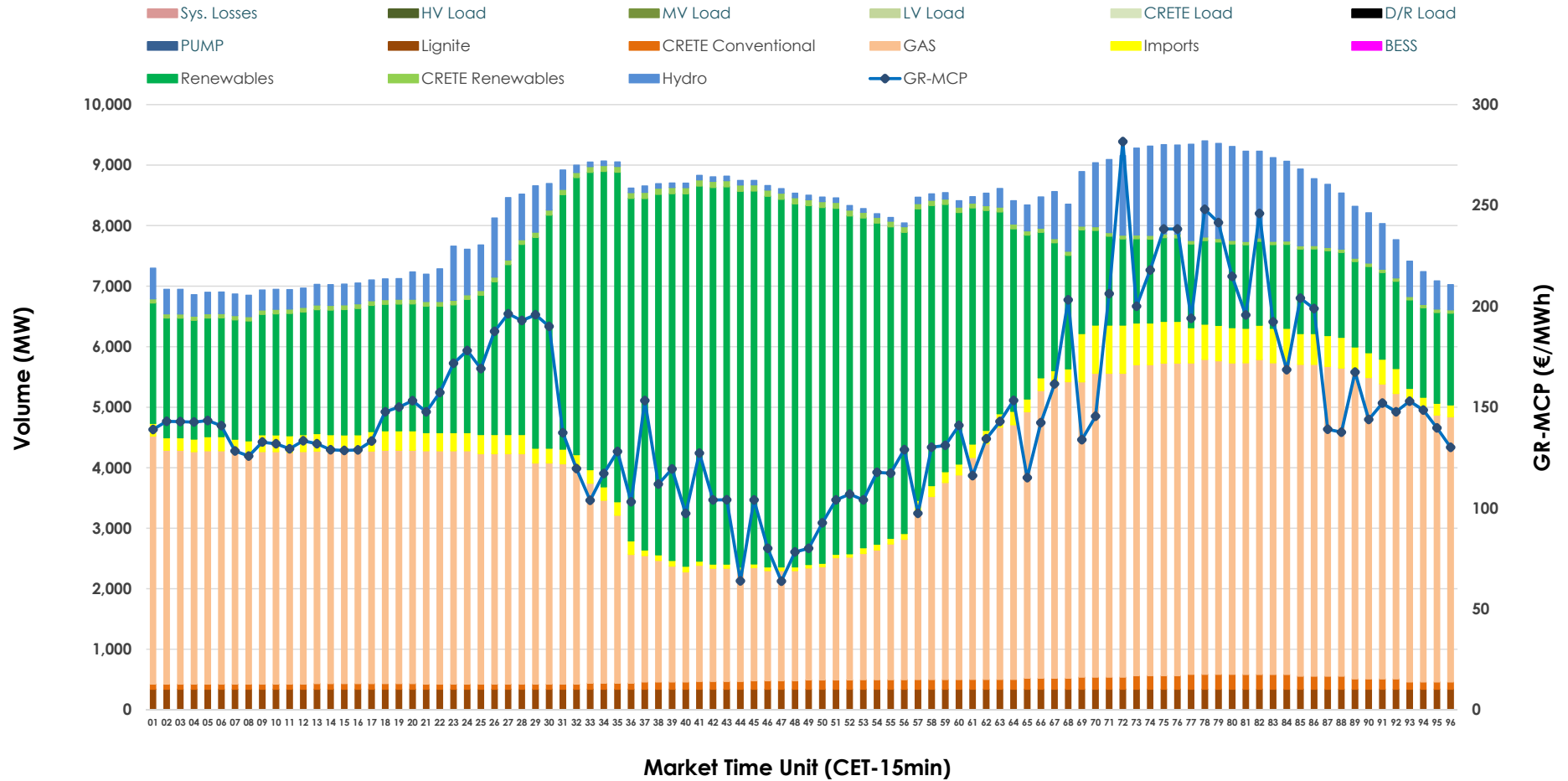


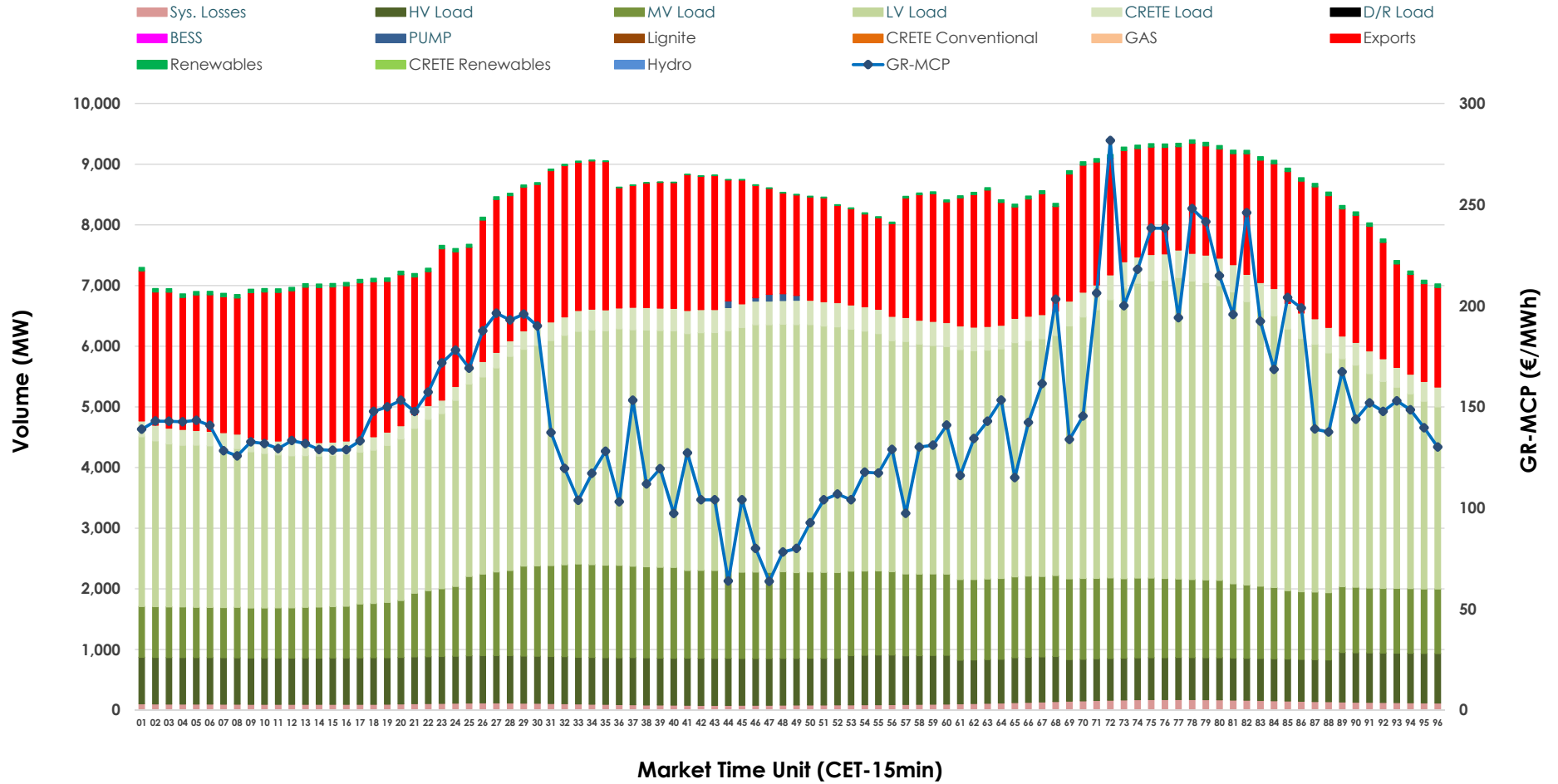


Day-Ahead Market Outlook

23.03.2026 Day-Ahead Market - Sell



23.03.2026 Day-Ahead Market - Buy



GR Bidding Zone Weekly Figures

Delivery Day	17.03	18.03	19.03	20.03	21.03	22.03	23.03
	↗ 16%	↘ -22%	↗ 11%	↗ 11%	↘ -14%	↘ -12%	↗ 74%
Avg.MCP (€/MWh)	116.20	90.85	101.23	112.04	96.67	84.78	147.74
Max.MCP (€/MWh)	212.05	167.11	219.70	250.73	176.61	192.93	281.69
Min.MCP (€/MWh)	40.40	3.88	3.34	13.00	0.00	0.00	63.72
	↗ 17%	➡ 0%	↘ -2%	↗ 5%	↘ -2%	↘ -9%	↗ 9%
Tot.Vol(GWh)	395.97	395.77	386.01	405.85	396.49	362.14	394.91

Trades by Order Type

Delivery Day		17.03	18.03	19.03	20.03	21.03	22.03	23.03	
Ord Price Type		Sell & Buy Trades in (GWh) per Price Type							(%)
PPT	(S)	84.654	94.196	93.438	96.577	90.130	82.949	77.542	39.27%
HBD	(S)	76.425	69.505	74.421	78.081	79.261	67.215	71.298	36.11%
BLK	(S)	36.898	28.203	20.366	28.178	28.856	30.904	46.688	23.64%
CPL	(S)	0.007	5.982	4.778	0.092	0.000	0.000	1.928	0.98%
PPT	(B)	14.050	13.302	13.670	13.501	14.027	13.092	14.391	7.29%
HBD	(B)	147.286	150.765	153.841	153.779	145.947	132.444	147.269	74.58%
BLK	(B)	0.000	0.000	0.000	0.000	0.000	0.000	0.000	0.00%
CPL	(B)	36.648	33.819	25.492	35.647	38.273	35.532	35.796	18.13%
		Sell & Buy Orders Traded per Price Type							(%)
PPT	(S)	1949	1927	2001	2050	1902	1902	1886	36.79%
HBD	(S)	3142	2970	3003	3049	2881	2817	3216	62.73%
BLK	(S)	21	12	8	13	16	18	25	0.49%
PPT	(B)	2260	2251	2246	2233	2232	2217	2231	35.53%
HBD	(B)	4043	4238	4109	4064	4095	4167	4048	64.47%
BLK	(B)	0	0	0	0	0	0	0	0.00%

- MCP** Market Clearing Price (€/MWh)
- PPT** Priority Price-Taking
- HBD** Hybrid
- BLK** Block
- CPL** Market Coupling Flow

Trade's Volume Mix

	Sell - MWh	Buy - MWh	
Lignite (4.1%)	8,160	0	(0.0%)
Crete Conv. (1.7%)	3,396	0	(0.0%)
Gas (45.6%)	90,008	0	(0.0%)
Hydro (6.6%)	13,078	0	(0.0%)
Imports (3.6%)	7,148		
RES (37.4%)	73,824	948	(0.5%)
Crete RES (0.9%)	1,842	0	(0.0%)
BESS (0.0%)	0	0	(0.0%)
HV Load (0.0%)	0	18,194	(9.2%)
MV Load (0.0%)	0	29,287	(14.8%)
LV Load (0.0%)	0	87,698	(44.4%)
Crete Load (0.0%)	0	8,295	(4.2%)
Pumping (0.0%)	0	116	(0.1%)
Exports		50,120	(25.4%)
Sys.Losses (0.0%)	0	2,797	(1.4%)
D/R Load (0.0%)	0	0	(0.0%)

