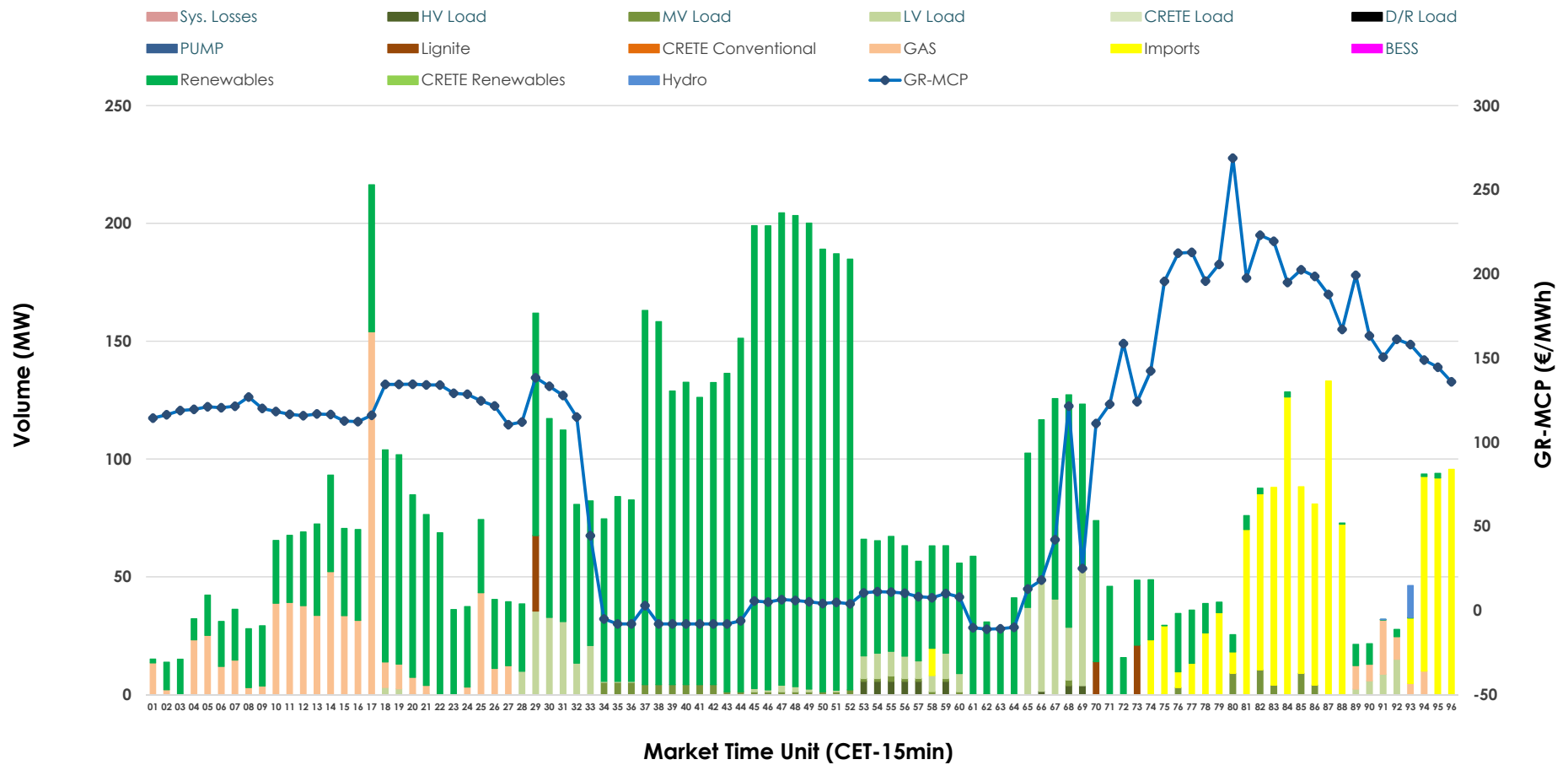


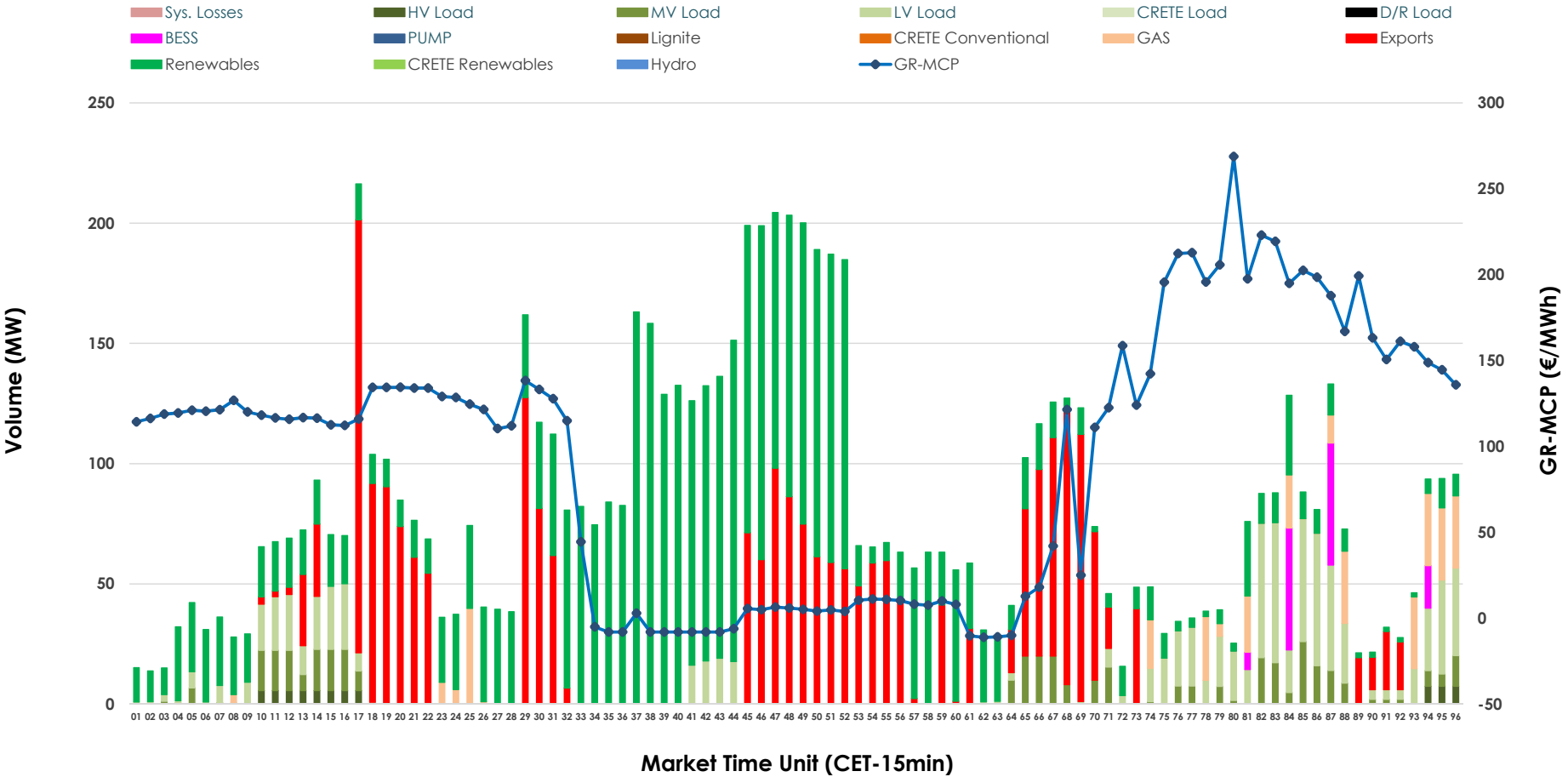


# IDA '2' Market Outlook

27.05.2026 IDA '2' Market - Sell



27.05.2026 IDA '2' Market - Buy



### GR Bidding Zone Weekly Figures

Delivery Day	21.05	22.05	23.05	24.05	25.05	26.05	27.05
	↑ 33%	↘ -2%	↘ -26%	↘ -6%	↗ 17%	↗ 11%	↗ 15%
<b>Avg.MCP (€/MWh)</b>	92.33	90.57	66.79	62.57	73.39	81.31	93.58
<b>Max.MCP (€/MWh)</b>	221.99	161.98	175.24	158.00	172.51	196.92	268.78
<b>Min.MCP (€/MWh)</b>	-10.26	-2.17	-2.04	-7.00	-8.25	-15.17	-11.11
	↘ -12%	↘ -6%	↑ 44%	↘ -39%	↗ 31%	↘ -11%	↘ -7%
<b>Tot.Vol(GWh)</b>	4.55	4.28	6.16	3.73	4.89	4.34	4.02

### Trades by Order Type

Delivery Day	21.05	22.05	23.05	24.05	25.05	26.05	27.05	
<b>Ord Price Type</b>	<b>Sell &amp; Buy Trades in (GWh) per Price Type</b>							<b>(%)</b>
<b>PPT (S)</b>	0.000	0.000	0.000	0.000	0.000	0.000	0.000	0.00%
<b>HBD (S)</b>	1.964	1.614	2.467	1.137	2.126	2.046	1.716	85.45%
<b>BLK (S)</b>	0.000	0.000	0.000	0.000	0.000	0.000	0.000	0.00%
<b>CPL (S)</b>	0.309	0.527	0.613	0.730	0.321	0.123	0.292	14.55%
<b>PPT (B)</b>	0.000	0.000	0.000	0.000	0.000	0.000	0.000	0.00%
<b>HBD (B)</b>	1.744	1.739	2.289	1.729	1.255	1.174	1.404	69.92%
<b>BLK (B)</b>	0.000	0.000	0.000	0.000	0.000	0.000	0.000	0.00%
<b>CPL (B)</b>	0.529	0.402	0.791	0.138	1.192	0.995	0.604	30.08%
	<b>Sell &amp; Buy Orders Traded per Price Type</b>							<b>(%)</b>
<b>PPT (S)</b>	0	0	0	0	0	0	0	0.00%
<b>HBD (S)</b>	268	311	226	176	303	282	405	100.00%
<b>BLK (S)</b>	0	0	0	0	0	0	0	0.00%
<b>PPT (B)</b>	0	0	0	0	0	0	0	0.00%
<b>HBD (B)</b>	413	417	543	406	632	354	446	100.00%
<b>BLK (B)</b>	0	0	0	0	0	0	0	0.00%

**MCP** Market Clearing Price (€/MWh)  
**PPT** Priority Price-Taking  
**HBD** Hybrid  
**BLK** Block  
**CPL** Market Coupling Flow

### Trade's Volume Mix

	Sell - MWh	Buy - MWh	
<b>Lignite</b> (0.8%)	17	0	(0.0%)
<b>Crete Conv.</b> (0.0%)	0	0	(0.0%)
<b>Gas</b> (8.5%)	171	80	(4.0%)
<b>Hydro</b> (0.2%)	3	0	(0.0%)
<b>Imports</b> (14.5%)	292		
<b>RES</b> (68.3%)	1,372	963	(48.0%)
<b>Crete RES</b> (0.0%)	0	0	(0.0%)
<b>BESS</b> (0.0%)	0	32	(1.6%)
<b>HV Load</b> (0.5%)	11	17	(0.8%)
<b>MV Load</b> (1.3%)	27	98	(4.9%)
<b>LV Load</b> (5.8%)	116	215	(10.7%)
<b>Crete Load</b> (0.0%)	0	0	(0.0%)
<b>Pumping</b> (0.0%)	0	0	(0.0%)
<b>Exports</b>		604	(30.1%)
<b>Sys.Losses</b> (0.0%)	0	0	(0.0%)
<b>D/R Load</b> (0.0%)	0	0	(0.0%)

