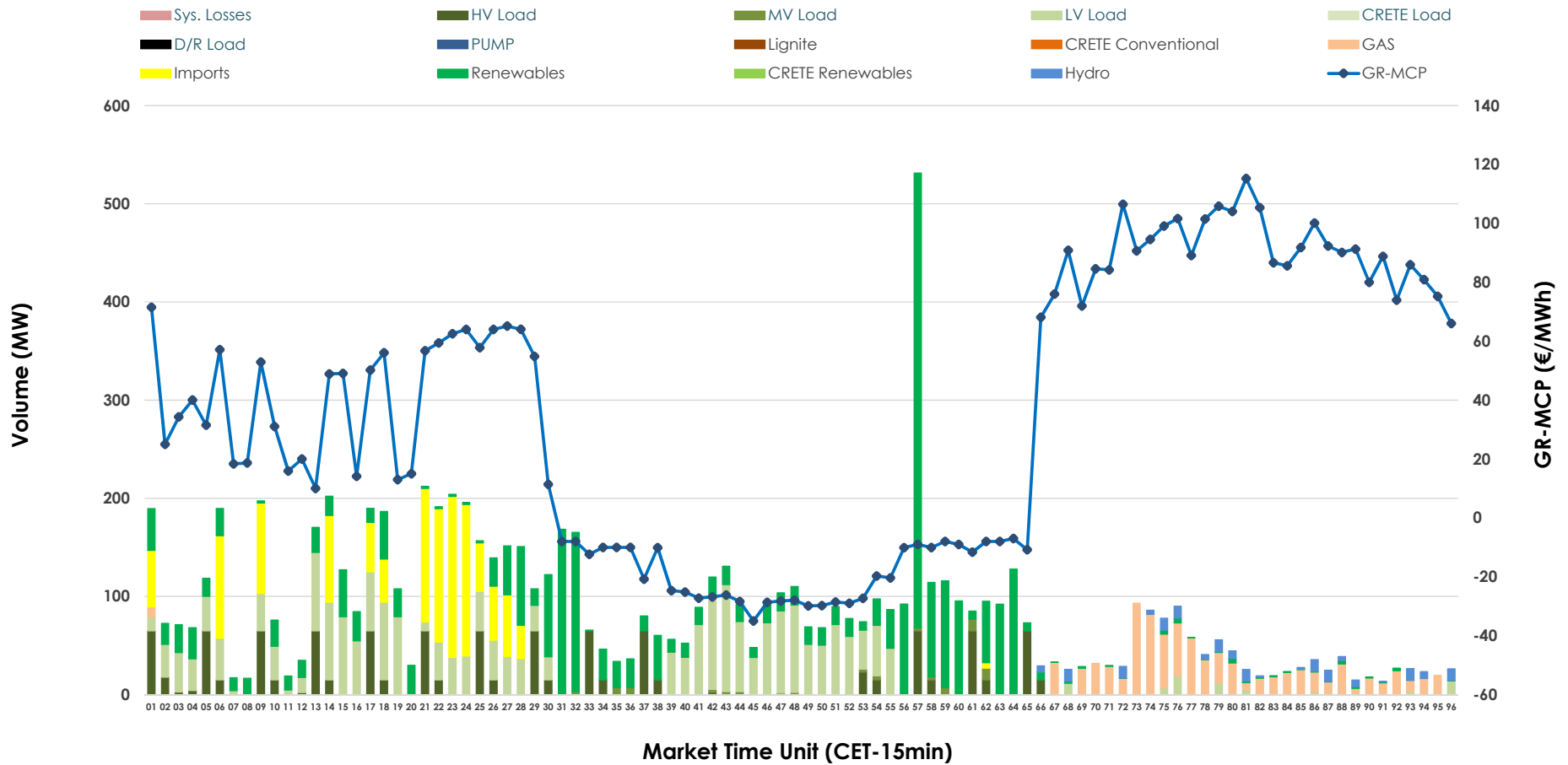


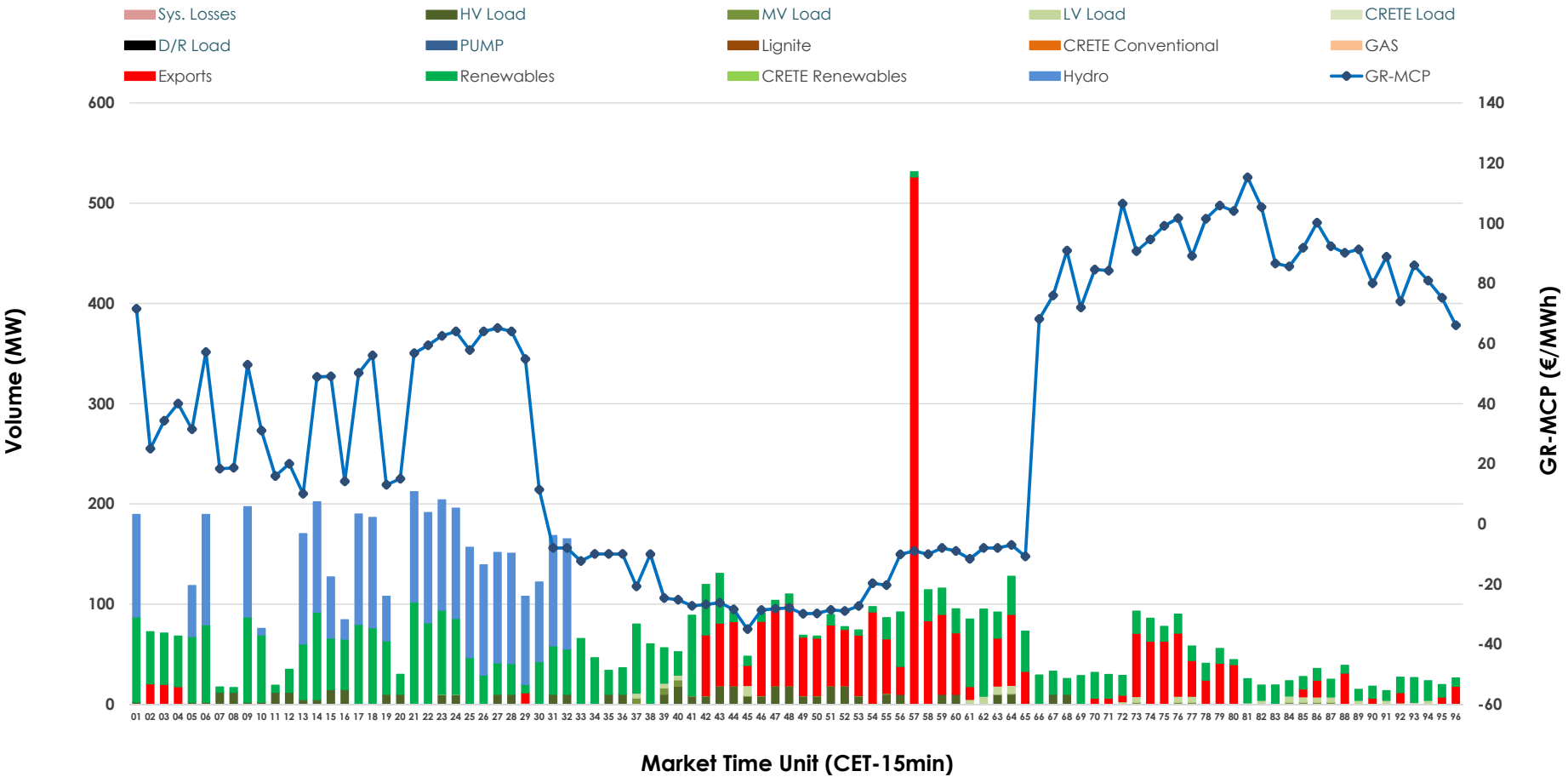


# IDA '2' Market Outlook

01.03.2026 IDA '2' Market - Sell



### 01.03.2026 IDA '2' Market - Buy



### GR Bidding Zone Weekly Figures

Delivery Day	23.02	24.02	25.02	26.02	27.02	28.02	01.03
	↑ 54%	↔ 18%	↓ -15%	↓ -4%	↔ 25%	↓ -23%	↓ -31%
<b>Avg.MCP (€/MWh)</b>	54.51	64.22	54.61	52.41	65.67	50.54	35.08
<b>Max.MCP (€/MWh)</b>	141.61	140.04	155.01	130.70	148.51	105.45	115.24
<b>Min.MCP (€/MWh)</b>	-25.00	-12.33	-12.63	-35.00	-7.89	-20.07	-35.00
	↑ 33%	↔ -27%	↓ -8%	↔ 3%	↔ 9%	↑ 299%	↓ -73%
<b>Tot.Vol(GWh)</b>	5.19	3.77	3.49	3.60	3.92	15.63	4.23

### Trades by Order Type

Delivery Day		23.02	24.02	25.02	26.02	27.02	28.02	01.03	
<b>Ord Price Type</b>		<b>Sell &amp; Buy Trades in (GWh) per Price Type</b>							<b>(%)</b>
<b>PPT</b>	(S)	0.000	0.000	0.000	0.000	0.000	0.000	0.000	0.00%
<b>HBD</b>	(S)	1.631	1.491	1.499	1.717	0.956	1.932	1.809	85.43%
<b>BLK</b>	(S)	0.000	0.000	0.000	0.000	0.000	0.000	0.000	0.00%
<b>CPL</b>	(S)	0.967	0.394	0.244	0.083	1.004	5.884	0.309	14.57%
<b>PPT</b>	(B)	0.000	0.000	0.000	0.000	0.000	0.000	0.000	0.00%
<b>HBD</b>	(B)	2.441	1.390	1.471	1.682	1.863	7.476	1.518	71.69%
<b>BLK</b>	(B)	0.000	0.000	0.000	0.000	0.000	0.000	0.000	0.00%
<b>CPL</b>	(B)	0.157	0.496	0.273	0.117	0.097	0.340	0.599	28.31%
		<b>Sell &amp; Buy Orders Traded per Price Type</b>							<b>(%)</b>
<b>PPT</b>	(S)	0	0	0	0	0	0	0	0.00%
<b>HBD</b>	(S)	271	234	268	254	213	205	253	100.00%
<b>BLK</b>	(S)	0	0	0	0	0	0	0	0.00%
<b>PPT</b>	(B)	0	0	0	0	0	0	0	0.00%
<b>HBD</b>	(B)	382	368	415	474	492	261	361	100.00%
<b>BLK</b>	(B)	0	0	0	0	0	0	0	0.00%

**MCP** Market Clearing Price (€/MWh)  
**PPT** Priority Price-Taking  
**HBD** Hybrid  
**BLK** Block  
**CPL** Market Coupling Flow

### Trade's Volume Mix

	Sell - MWh	Buy - MWh	
<b>Lignite</b> (0.0%)	0	0	(0.0%)
<b>Crete Conv.</b> (0.0%)	0	0	(0.0%)
<b>Gas</b> (10.0%)	212	0	(0.0%)
<b>Hydro</b> (1.9%)	41	553	(26.1%)
<b>Imports</b> (14.6%)	309		
<b>RES</b> (32.6%)	690	806	(38.1%)
<b>Crete RES</b> (0.0%)	0	0	(0.0%)
<b>HV Load</b> (12.9%)	273	118	(5.6%)
<b>MV Load</b> (0.9%)	19	11	(0.5%)
<b>LV Load</b> (27.1%)	573	30	(1.4%)
<b>Crete Load</b> (0.0%)	0	0	(0.0%)
<b>Pumping</b> (0.0%)	0	0	(0.0%)
<b>Exports</b>		599	(28.3%)
<b>Sys.Losses</b> (0.0%)	0	0	(0.0%)
<b>D/R Load</b> (0.0%)	0	0	(0.0%)

