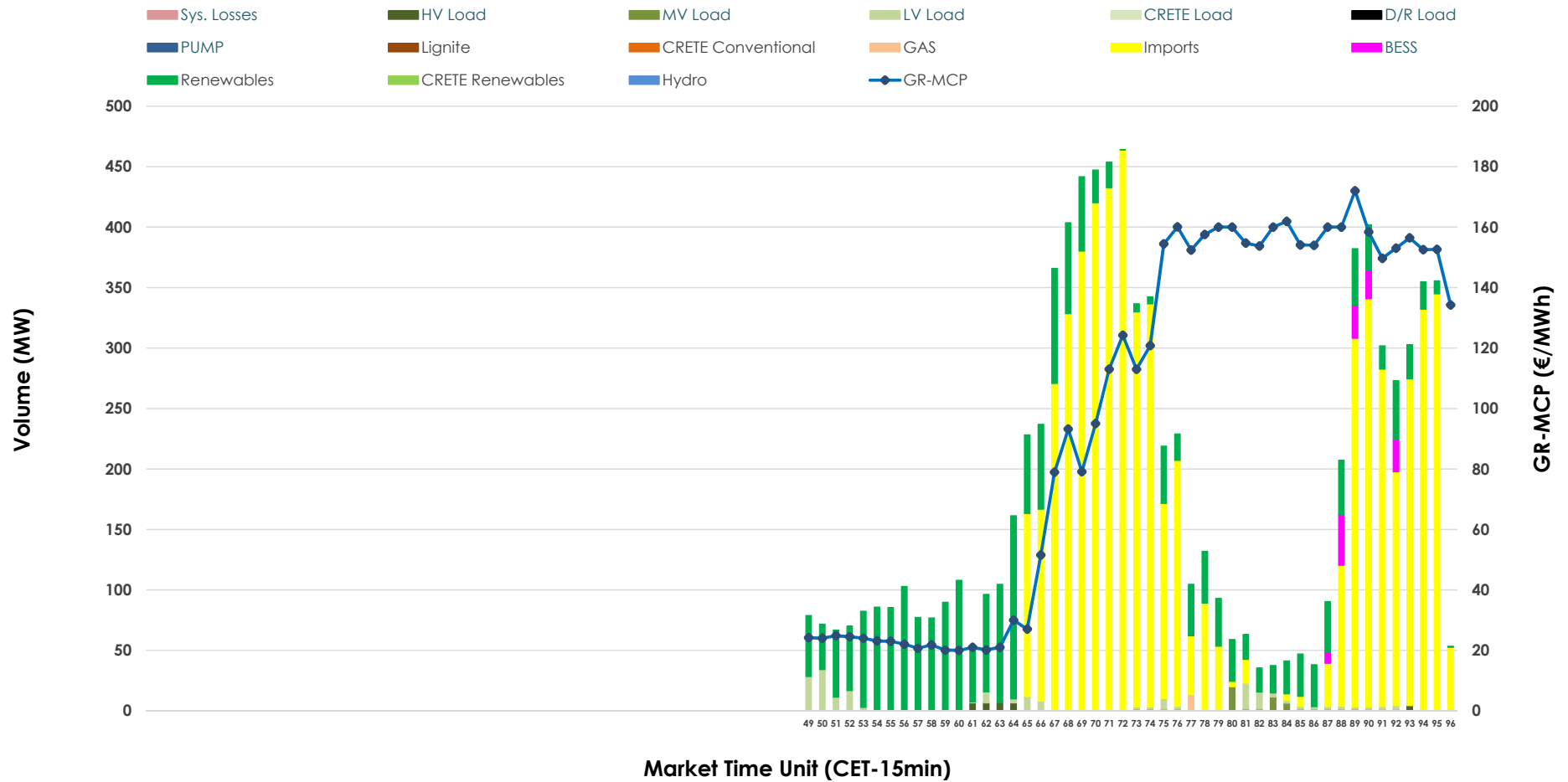


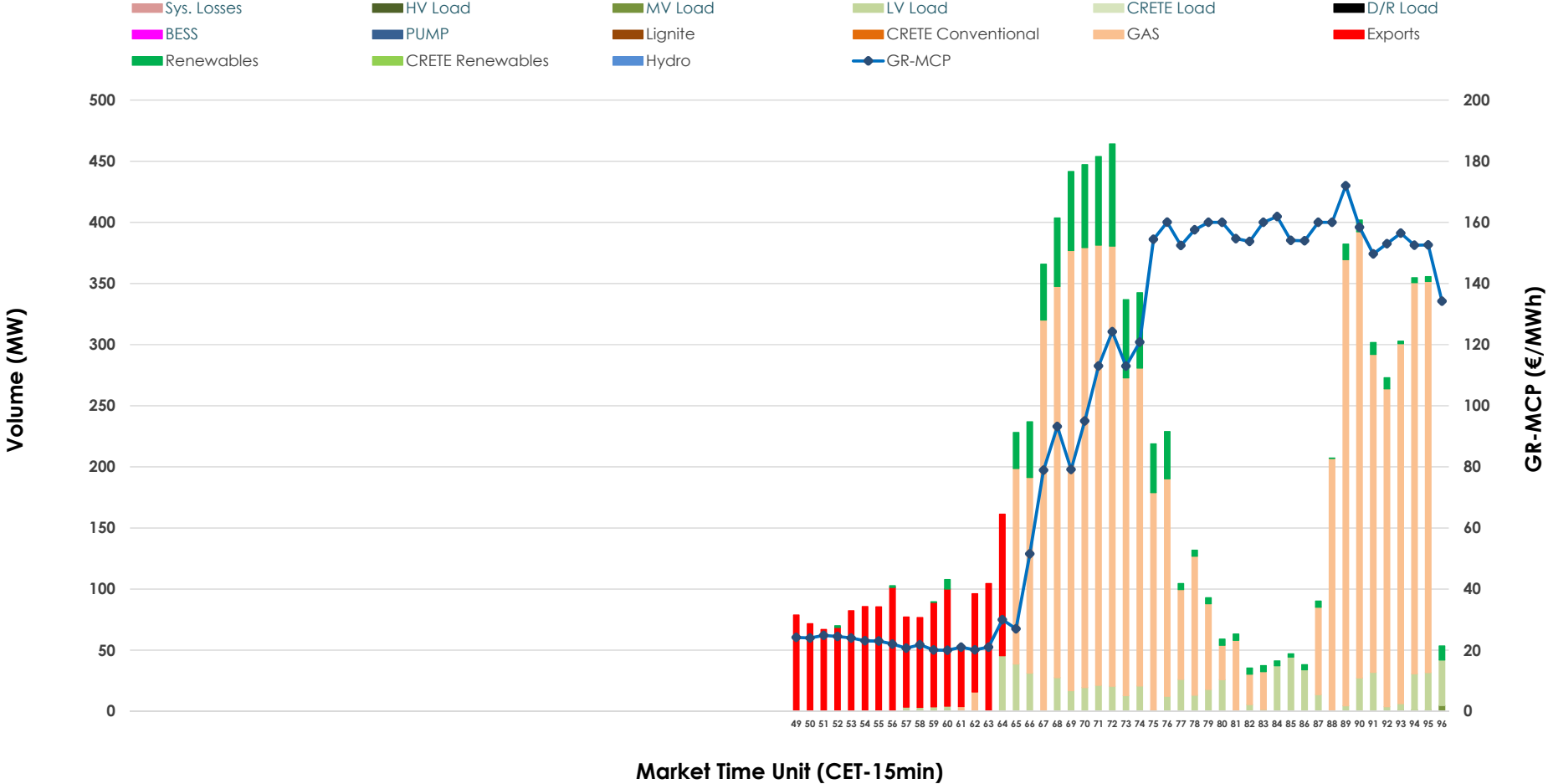


# IDA '3' Market Outlook

31.05.2026 IDA '3' Market - Sell



### 31.05.2026 IDA '3' Market - Buy



### GR Bidding Zone Weekly Figures

Delivery Day	25.05	26.05	27.05	28.05	29.05	30.05	31.05
	↗ 12%	↗ 8%	↗ 47%	↘ -23%	↘ -18%	↗ 4%	↗ 32%
<b>Avg.MCP (€/MWh)</b>	70.53	76.50	112.62	86.25	70.87	73.90	97.75
<b>Max.MCP (€/MWh)</b>	167.51	190.92	269.90	205.07	152.55	168.60	171.99
<b>Min.MCP (€/MWh)</b>	-14.01	-9.34	-8.29	-6.67	-16.74	-8.00	19.99
	↗ 103%	↗ 51%	↘ -60%	↗ 48%	↘ -39%	↗ 8%	↗ 146%
<b>Tot.Vol(GWh)</b>	3.11	4.72	1.87	2.77	1.69	1.82	4.47

### Trades by Order Type

Delivery Day		25.05	26.05	27.05	28.05	29.05	30.05	31.05	
<b>Ord Price Type</b>		<b>Sell &amp; Buy Trades in (GWh) per Price Type</b>							<b>(%)</b>
<b>PPT</b>	(S)	0.000	0.000	0.000	0.000	0.000	0.000	0.000	0.00%
<b>HBD</b>	(S)	1.038	2.324	0.427	0.934	0.847	0.825	0.705	31.53%
<b>BLK</b>	(S)	0.000	0.000	0.000	0.000	0.000	0.000	0.000	0.00%
<b>CPL</b>	(S)	0.519	0.034	0.509	0.449	0.000	0.086	1.532	68.47%
<b>PPT</b>	(B)	0.000	0.000	0.000	0.000	0.000	0.000	0.000	0.00%
<b>HBD</b>	(B)	1.318	1.882	0.893	1.365	0.322	0.557	1.909	85.33%
<b>BLK</b>	(B)	0.000	0.000	0.000	0.000	0.000	0.000	0.000	0.00%
<b>CPL</b>	(B)	0.240	0.476	0.043	0.018	0.526	0.354	0.328	14.67%
		<b>Sell &amp; Buy Orders Traded per Price Type</b>							<b>(%)</b>
<b>PPT</b>	(S)	0	0	0	0	0	0	0	0.00%
<b>HBD</b>	(S)	166	141	115	144	167	109	177	100.00%
<b>BLK</b>	(S)	0	0	0	0	0	0	0	0.00%
<b>PPT</b>	(B)	0	0	0	0	0	0	0	0.00%
<b>HBD</b>	(B)	309	251	285	308	203	212	164	100.00%
<b>BLK</b>	(B)	0	0	0	0	0	0	0	0.00%

- MCP** Market Clearing Price (€/MWh)
- PPT** Priority Price-Taking
- HBD** Hybrid
- BLK** Block
- CPL** Market Coupling Flow

### Trade's Volume Mix

		Sell - MWh	Buy - MWh	
<b>Lignite</b>	(0.0%)	0	0	(0.0%)
<b>Crete Conv.</b>	(0.0%)	0	0	(0.0%)
<b>Gas</b>	(0.1%)	3	1,539	(68.8%)
<b>Hydro</b>	(0.0%)	0	0	(0.0%)
<b>Imports</b>	(68.5%)	1,532		
<b>RES</b>	(26.7%)	597	198	(8.8%)
<b>Crete RES</b>	(0.0%)	0	0	(0.0%)
<b>BESS</b>	(1.4%)	32	0	(0.0%)
<b>HV Load</b>	(0.3%)	8	0	(0.0%)
<b>MV Load</b>	(0.6%)	14	3	(0.1%)
<b>LV Load</b>	(2.3%)	52	169	(7.6%)
<b>Crete Load</b>	(0.0%)	0	0	(0.0%)
<b>Pumping</b>	(0.0%)	0	0	(0.0%)
<b>Exports</b>			328	(14.7%)
<b>Sys.Losses</b>	(0.0%)	0	0	(0.0%)
<b>D/R Load</b>	(0.0%)	0	0	(0.0%)

