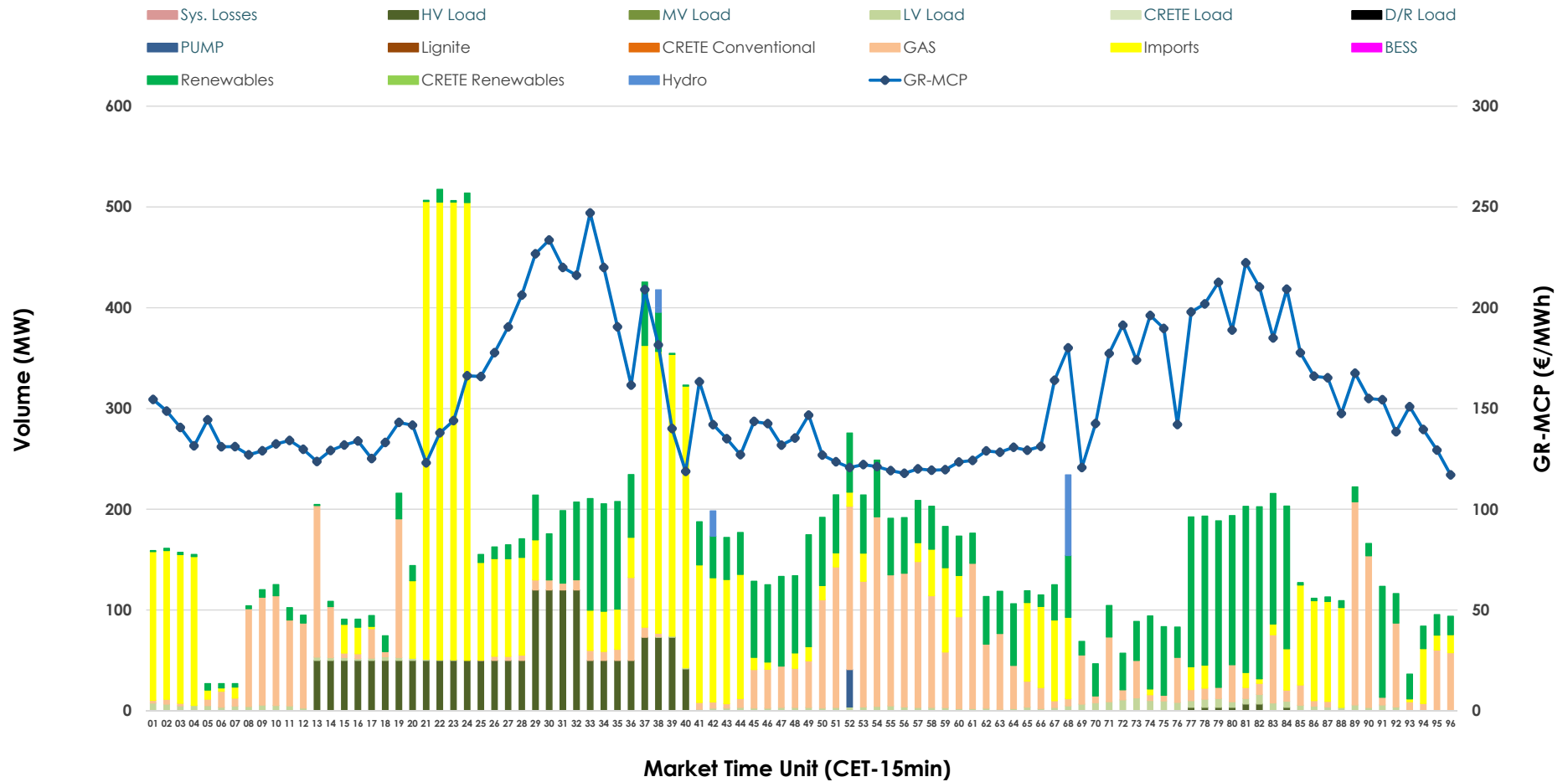


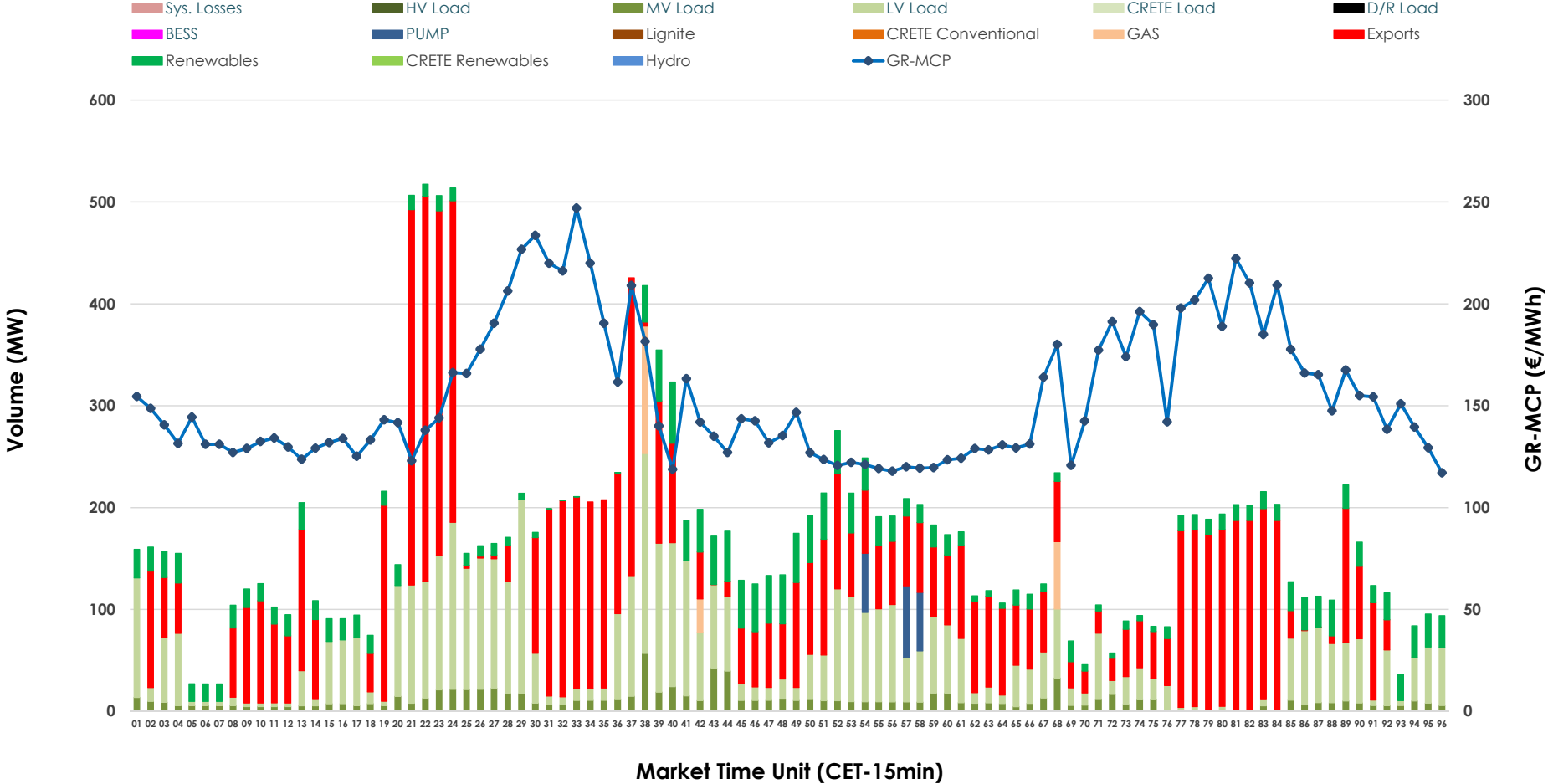


# IDA '1' Market Outlook

01.04.2026 IDA '1' Market - Sell



### 01.04.2026 IDA '1' Market - Buy



### GR Bidding Zone Weekly Figures

Delivery Day	26.03	27.03	28.03	29.03	30.03	31.03	01.04
	↗ 7%	↗ 14%	↘ -9%	↘ -16%	↗ 66%	↗ 11%	↗ 17%
<b>Avg.MCP (€/MWh)</b>	82.14	93.92	85.15	71.83	119.14	132.20	154.80
<b>Max.MCP (€/MWh)</b>	175.68	158.93	168.64	149.89	225.95	225.72	247.00
<b>Min.MCP (€/MWh)</b>	-5.14	-2.58	6.75	-14.99	4.21	91.35	117.05
	↗ 15%	↘ -14%	↘ -8%	↘ -9%	↗ 6%	↗ 59%	↗ 55%
<b>Tot.Vol(GWh)</b>	4.41	3.77	3.48	3.15	3.36	5.35	8.30

### Trades by Order Type

Delivery Day		26.03	27.03	28.03	29.03	30.03	31.03	01.04	
<b>Ord Price Type</b>		<b>Sell &amp; Buy Trades in (GWh) per Price Type</b>							<b>(%)</b>
<b>PPT</b>	(S)	0.000	0.000	0.000	0.000	0.000	0.000	0.000	0.00%
<b>HBD</b>	(S)	2.119	1.303	1.243	1.282	1.302	2.355	2.648	63.78%
<b>BLK</b>	(S)	0.000	0.000	0.000	0.000	0.000	0.000	0.000	0.00%
<b>CPL</b>	(S)	0.084	0.584	0.494	0.296	0.377	0.319	1.504	36.22%
<b>PPT</b>	(B)	0.000	0.000	0.000	0.000	0.000	0.000	0.000	0.00%
<b>HBD</b>	(B)	1.166	1.722	1.233	1.228	1.400	2.175	2.116	50.97%
<b>BLK</b>	(B)	0.000	0.000	0.000	0.000	0.000	0.000	0.000	0.00%
<b>CPL</b>	(B)	1.037	0.165	0.505	0.349	0.280	0.499	2.035	49.03%
		<b>Sell &amp; Buy Orders Traded per Price Type</b>							<b>(%)</b>
<b>PPT</b>	(S)	0	0	0	0	0	0	0	0.00%
<b>HBD</b>	(S)	203	261	290	326	176	376	368	100.00%
<b>BLK</b>	(S)	0	0	0	0	0	0	0	0.00%
<b>PPT</b>	(B)	0	0	0	0	0	0	0	0.00%
<b>HBD</b>	(B)	738	860	694	812	860	719	673	100.00%
<b>BLK</b>	(B)	0	0	0	0	0	0	0	0.00%

- MCP** Market Clearing Price (€/MWh)
- PPT** Priority Price-Taking
- HBD** Hybrid
- BLK** Block
- CPL** Market Coupling Flow

### Trade's Volume Mix

		Sell - MWh	Buy - MWh	
<b>Lignite</b>	(0.0%)	0	0	(0.0%)
<b>Crete Conv.</b>	(0.0%)	0	0	(0.0%)
<b>Gas</b>	(24.6%)	1,021	56	(1.4%)
<b>Hydro</b>	(0.8%)	32	0	(0.0%)
<b>Imports</b>	(36.2%)	1,504		
<b>RES</b>	(25.4%)	1,056	502	(12.1%)
<b>Crete RES</b>	(0.0%)	0	0	(0.0%)
<b>BESS</b>	(0.0%)	0	0	(0.0%)
<b>HV Load</b>	(10.7%)	443	0	(0.0%)
<b>MV Load</b>	(0.0%)	0	258	(6.2%)
<b>LV Load</b>	(2.1%)	87	1,253	(30.2%)
<b>Crete Load</b>	(0.0%)	0	0	(0.0%)
<b>Pumping</b>	(0.2%)	9	46	(1.1%)
<b>Exports</b>			2,035	(49.0%)
<b>Sys.Losses</b>	(0.0%)	0	0	(0.0%)
<b>D/R Load</b>	(0.0%)	0	0	(0.0%)

