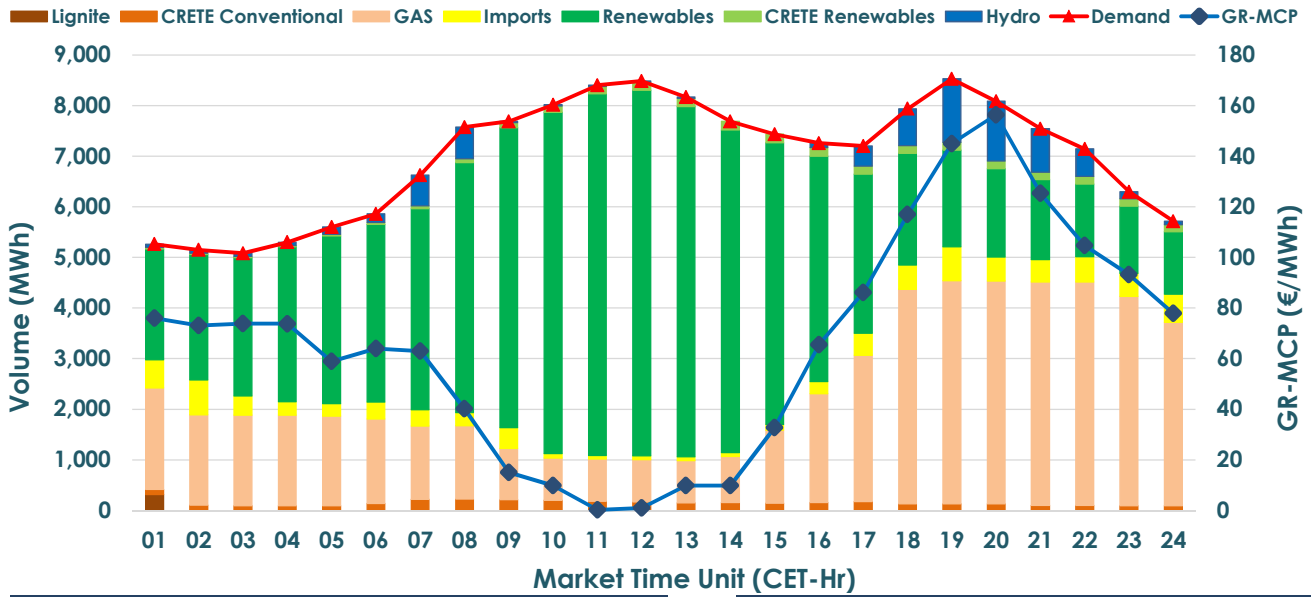


### 20.03.2024 Day-Ahead Market



#### GR Bidding Zone Weekly Figures

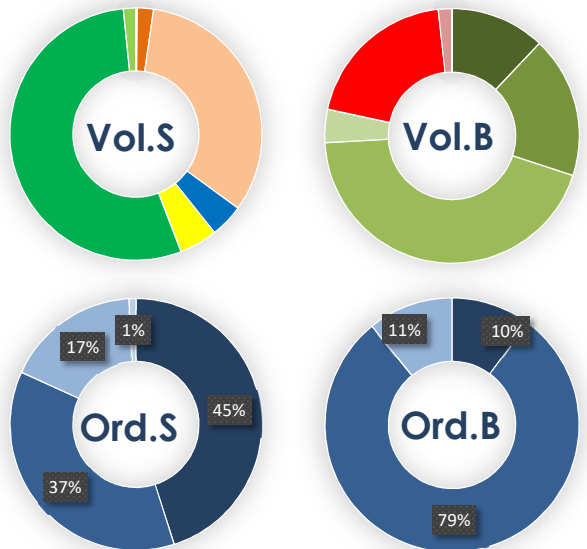
| Delivery Day    | 14.03  | 15.03  | 16.03  | 17.03  | 18.03  | 19.03  | 20.03  |
|-----------------|--------|--------|--------|--------|--------|--------|--------|
|                 | ↓-2%   | ↓-13%  | ↑4%    | ↓-7%   | ↑18%   | ↑11%   | ↓-22%  |
| Avg.MCP (€/MWh) | 75.97  | 65.88  | 68.42  | 63.97  | 75.33  | 83.90  | 65.53  |
| Max.MCP (€/MWh) | 114.77 | 102.06 | 122.01 | 89.06  | 125.16 | 128.96 | 156.39 |
| Min.MCP (€/MWh) | 52.44  | 38.19  | 32.40  | 29.36  | 35.35  | 58.19  | 0.20   |
|                 | ↓-2%   | ↓-3%   | ↓-6%   | ↓-6%   | ↑12%   | ↑2%    | ↑13%   |
| Tot.Vol(GWh)    | 302.56 | 294.67 | 276.80 | 259.20 | 290.80 | 297.10 | 336.09 |

#### Trade's Volume Mix

|             | Sell - MWh     | Buy - MWh |         |
|-------------|----------------|-----------|---------|
| Lignite     | (0.2%) 313     | 0         | (0.0%)  |
| Crete Conv. | (2.0%) 3,434   | 0         | (0.0%)  |
| Gas         | (32.8%) 55,042 | 0         | (0.0%)  |
| Hydro       | (4.3%) 7,205   | 0         | (0.0%)  |
| Imports     | (4.9%) 8,232   |           |         |
| RES         | (54.2%) 91,103 | 0         | (0.0%)  |
| Crete RES   | (1.6%) 2,717   | 0         | (0.0%)  |
|             |                |           |         |
| HV Load     | (0.0%) 0       | 20,242    | (12.0%) |
| MV Load     | (0.0%) 0       | 30,253    | (18.0%) |
| LV Load     | (0.0%) 0       | 74,119    | (44.1%) |
| Crete Load  | (0.0%) 0       | 7,090     | (4.2%)  |
| Pumping     | (0.0%) 0       | 0         | (0.0%)  |
| Exports     |                | 33,412    | (19.9%) |
| Sys.Losses  | (0.0%) 0       | 2,931     | (1.7%)  |

#### Trades by Order Type

| Delivery Day | 14.03                                     | 15.03                                   | 16.03   | 17.03   | 18.03   | 19.03   | 20.03   |  |
|--------------|---|---|---------|---------|---------|---------|---------|--|
| Order P.T    | Sell & Buy Trades in (GWh) per Price Type |   |         |         |         |         |         |  |
| PPT          | (S)                                       | 66.370                                  | 64.917  | 56.012  | 54.136  | 63.713  | 58.713  |  |
| HBD          | (S)                                       | 46.505                                  | 45.511  | 39.040  | 37.303  | 45.408  | 42.582  |  |
| BLK          | (S)                                       | 28.799                                  | 25.533  | 26.284  | 21.735  | 32.059  | 38.292  |  |
| CPL          | (S)                                       | 9.605                                   | 11.373  | 17.064  | 16.424  | 4.221   | 8.961   |  |
| PPT          | (B)                                       | 15.508                                  | 15.152  | 15.321  | 13.121  | 14.922  | 15.633  |  |
| HBD          | (B)                                       | 117.925                                 | 119.309 | 113.027 | 107.320 | 106.601 | 115.840 |  |
| BLK          | (B)                                       |   |         |         |         |         |         |  |
| CPL          | (B)                                       | 17.846                                  | 12.874  | 10.052  | 9.158   | 23.878  | 17.076  |  |
|              |   | Sell & Buy Orders Traded per Price Type |         |         |         |         |         |  |
| PPT          | (S)                                       | 714                                     | 708     | 723     | 712     | 589     | 643     |  |
| HBD          | (S)                                       | 1202                                    | 1265    | 1250    | 1238    | 1102    | 1340    |  |
| BLK          | (S)                                       | 189                                     | 158     | 175     | 145     | 193     | 257     |  |
| PPT          | (B)                                       | 561                                     | 564     | 563     | 540     | 598     | 631     |  |
| HBD          | (B)                                       | 1110                                    | 1183    | 1081    | 1154    | 1261    | 1086    |  |
| BLK          | (B)                                       |   |         |         |         |         |         |  |



MCP Market Clearing Price (€/MWh)  
 PPT Priority Price-Taking  
 HBD Hybrid  
 BLK Block  
 CPL Market Coupling Flow