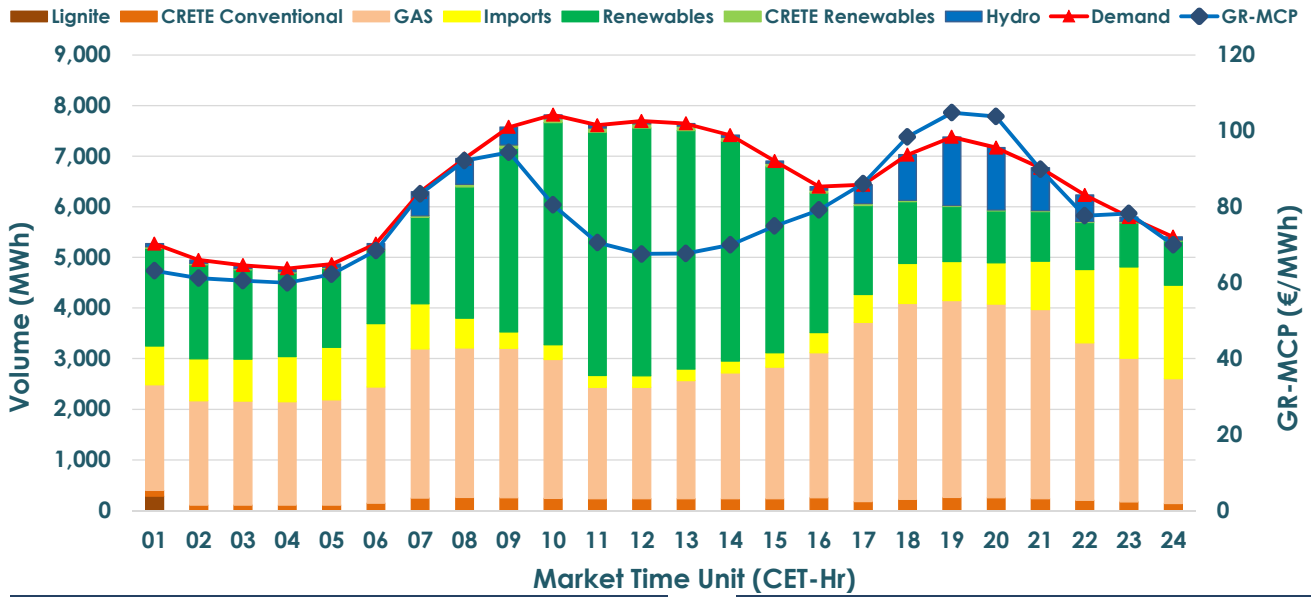


13.03.2024 Day-Ahead Market



GR Bidding Zone Weekly Figures

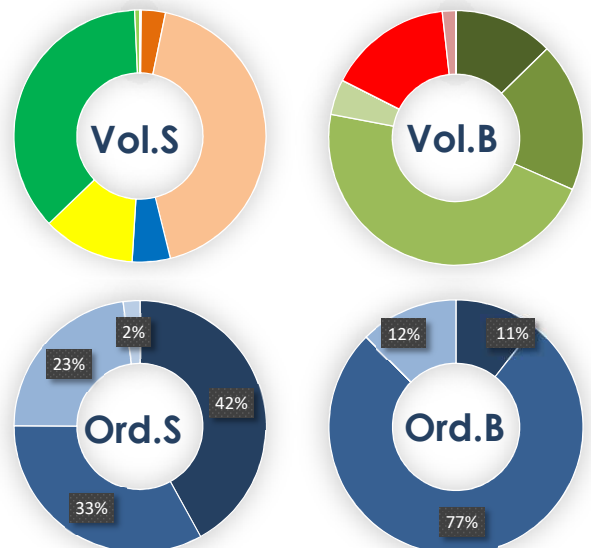
| Delivery Day | 07.03 | 08.03 | 09.03 | 10.03 | 11.03 | 12.03 | 13.03 |
|-----------------|--------|--------|--------|--------|--------|--------|--------|
| | ↗0% | ↘-4% | ↘-1% | ↘-25% | ↗24% | ↘-5% | ↗14% |
| Avg.MCP (€/MWh) | 81.28 | 78.14 | 77.20 | 57.84 | 71.89 | 68.35 | 77.70 |
| Max.MCP (€/MWh) | 122.00 | 122.43 | 115.00 | 78.94 | 100.03 | 122.01 | 104.78 |
| Min.MCP (€/MWh) | 66.16 | 55.16 | 38.22 | 2.23 | 51.47 | 9.86 | 59.98 |
| | ↗2% | ↘-2% | ↘-8% | ↘-7% | ↗18% | ↗2% | ↘-4% |
| Tot.Vol(GWh) | 318.14 | 312.48 | 286.15 | 266.28 | 315.11 | 322.01 | 309.03 |

Trade's Volume Mix

| | Sell - MWh | Buy - MWh | |
|-------------|----------------|-----------|---------|
| Lignite | (0.2%) 286 | 0 | (0.0%) |
| Crete Conv. | (3.1%) 4,747 | 0 | (0.0%) |
| Gas | (42.8%) 66,185 | 0 | (0.0%) |
| Hydro | (4.9%) 7,552 | 0 | (0.0%) |
| Imports | (11.8%) 18,288 | | |
| RES | (36.5%) 56,453 | 0 | (0.0%) |
| Crete RES | (0.7%) 1,005 | 0 | (0.0%) |
| HV Load | (0.0%) 0 | 19,606 | (12.7%) |
| MV Load | (0.0%) 0 | 29,291 | (19.0%) |
| LV Load | (0.0%) 0 | 71,582 | (46.3%) |
| Crete Load | (0.0%) 0 | 6,943 | (4.5%) |
| Pumping | (0.0%) 0 | 0 | (0.0%) |
| Exports | | 24,427 | (15.8%) |
| Sys.Losses | (0.0%) 0 | 2,667 | (1.7%) |

Trades by Order Type

| Delivery Day | 07.03 | 08.03 | 09.03 | 10.03 | 11.03 | 12.03 | 13.03 | |
|--------------|---|---------|---------|---------|---------|---------|---------|---------|
| Order P.T | Sell & Buy Trades in (GWh) per Price Type | | | | | | | |
| PPT | (S) | 73.460 | 74.303 | 59.657 | 49.819 | 66.255 | 79.988 | 64.879 |
| HBD | (S) | 47.893 | 50.360 | 37.555 | 42.201 | 55.847 | 57.050 | 51.142 |
| BLK | (S) | 33.557 | 23.933 | 23.413 | 19.755 | 25.743 | 20.128 | 35.181 |
| CPL | (S) | 4.160 | 7.645 | 22.452 | 21.365 | 9.710 | 3.839 | 3.314 |
| PPT | (B) | 15.296 | 14.728 | 14.241 | 13.116 | 16.673 | 16.730 | 16.253 |
| HBD | (B) | 127.776 | 124.461 | 117.877 | 109.279 | 127.273 | 125.565 | 118.956 |
| BLK | (B) | | | | | | | |
| CPL | (B) | 15.998 | 17.052 | 10.958 | 10.745 | 13.609 | 18.710 | 19.307 |
| | Sell & Buy Orders Traded per Price Type | | | | | | | |
| PPT | (S) | 594 | 601 | 641 | 649 | 515 | 551 | 578 |
| HBD | (S) | 1137 | 1102 | 1259 | 1220 | 989 | 1138 | 1286 |
| BLK | (S) | 208 | 149 | 148 | 132 | 166 | 137 | 208 |
| PPT | (B) | 559 | 532 | 506 | 520 | 659 | 640 | 611 |
| HBD | (B) | 1194 | 1155 | 1098 | 1109 | 1309 | 1245 | 1161 |
| BLK | (B) | | | | | | | |



MCP Market Clearing Price (€/MWh)
 PPT Priority Price-Taking
 HBD Hybrid
 BLK Block
 CPL Market Coupling Flow