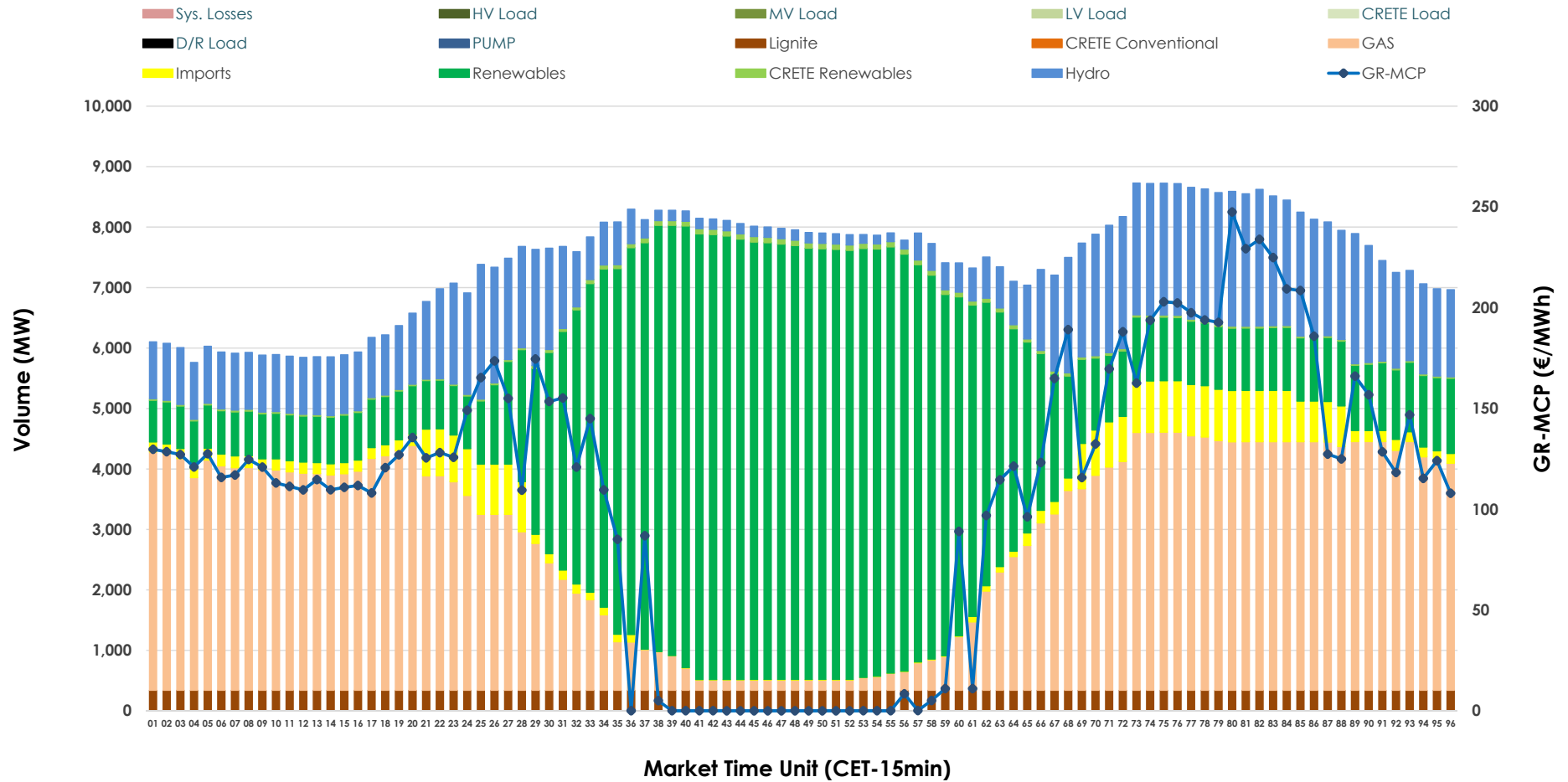


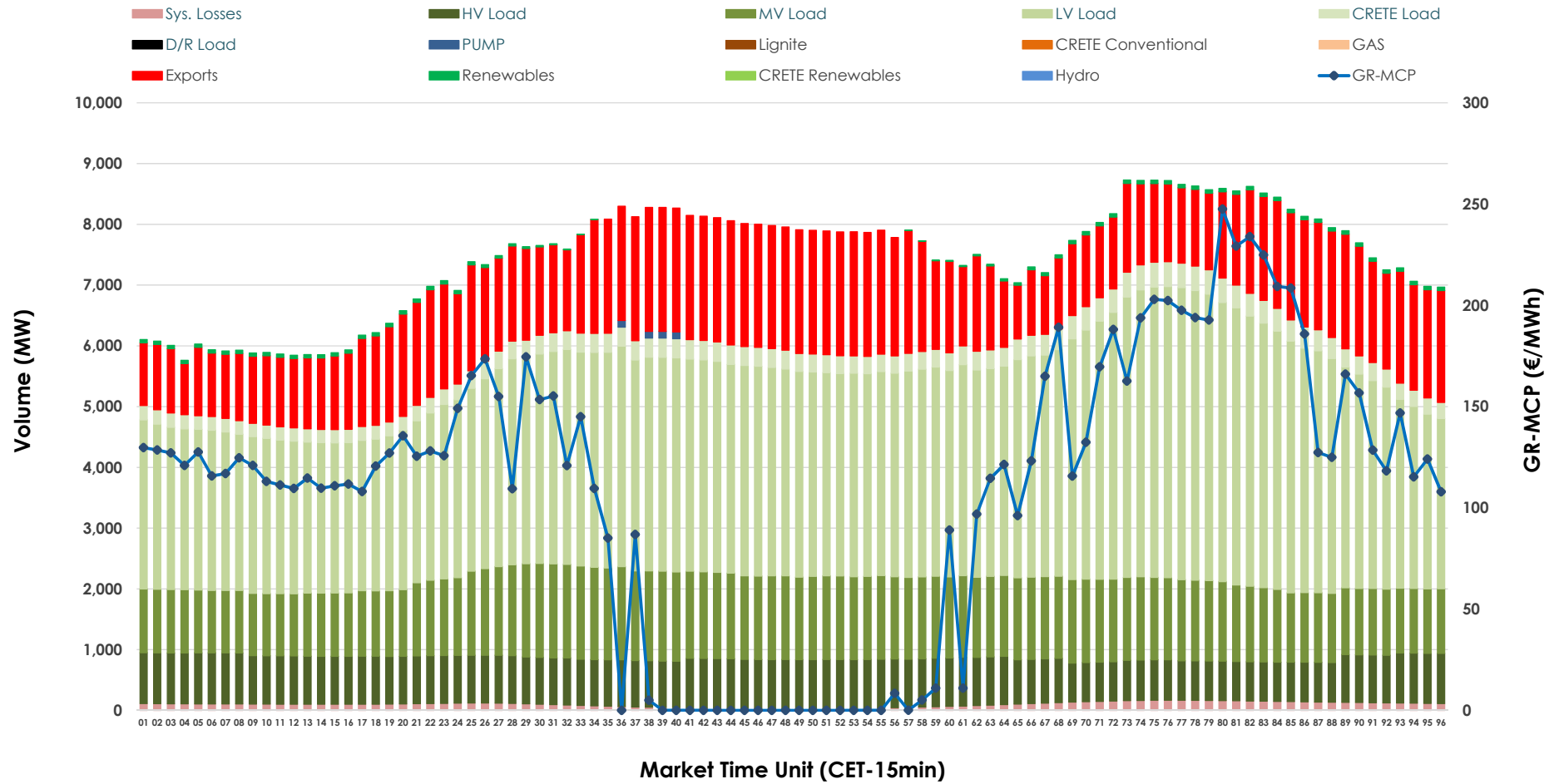


Day-Ahead Market Outlook

12.03.2026 Day-Ahead Market - Sell



12.03.2026 Day-Ahead Market - Buy



GR Bidding Zone Weekly Figures

Delivery Day	06.03	07.03	08.03	09.03	10.03	11.03	12.03
	👇 -17%	👇 -4%	👇 -2%	👉 1%	👉 2%	👉 10%	👉 16%
Avg.MCP (€/MWh)	87.16	83.96	82.31	82.94	84.90	93.35	108.24
Max.MCP (€/MWh)	203.10	168.31	172.04	247.48	253.89	240.49	247.52
Min.MCP (€/MWh)	0.00	-3.65	-1.83	-0.01	0.00	0.00	0.00
	👇 -4%	👇 -2%	👇 -5%	👉 7%	👇 -2%	👇 -8%	👉 5%
Tot.Vol(GWh)	375.71	368.18	351.54	377.07	369.77	340.80	358.00

Trades by Order Type

Delivery Day		06.03	07.03	08.03	09.03	10.03	11.03	12.03	
Ord Price Type		Sell & Buy Trades in (GWh) per Price Type							(%)
PPT	(S)	88.406	94.504	93.458	103.168	92.307	79.824	79.190	44.24%
HBD	(S)	70.555	63.366	60.465	72.209	67.169	58.548	66.823	37.33%
BLK	(S)	28.667	25.786	21.848	13.159	25.386	26.866	29.533	16.50%
CPL	(S)	0.226	0.435	0.000	0.000	0.022	5.164	3.454	1.93%
PPT	(B)	13.638	12.736	12.023	13.216	12.949	12.840	13.965	7.80%
HBD	(B)	144.877	133.811	126.370	140.244	142.529	138.311	138.400	77.32%
BLK	(B)	0.000	0.000	0.000	0.000	0.000	0.000	0.000	0.00%
CPL	(B)	29.338	37.545	37.378	35.075	29.406	19.251	26.635	14.88%
		Sell & Buy Orders Traded per Price Type							(%)
PPT	(S)	2001	2063	2035	2104	2050	1996	1979	39.27%
HBD	(S)	2910	2647	2482	2558	2512	2905	3046	60.45%
BLK	(S)	13	12	11	4	13	10	14	0.28%
PPT	(B)	2268	2377	2257	2354	2339	2312	2311	37.44%
HBD	(B)	4030	3907	3760	4001	4076	4033	3862	62.56%
BLK	(B)	0	0	0	0	0	0	0	0.00%

MCP Market Clearing Price (€/MWh)
PPT Priority Price-Taking
HBD Hybrid
BLK Block
CPL Market Coupling Flow

Trade's Volume Mix

		Sell - MWh	Buy - MWh	
Lignite	(4.6%)	8,160	0	(0.0%)
Crete Conv.	(0.0%)	0	0	(0.0%)
Gas	(35.0%)	62,701	0	(0.0%)
Hydro	(15.4%)	27,591	0	(0.0%)
Imports	(4.2%)	7,473		
RES	(40.2%)	71,911	855	(0.5%)
Crete RES	(0.7%)	1,164	0	(0.0%)
HV Load	(0.0%)	0	18,349	(10.3%)
MV Load	(0.0%)	0	30,604	(17.1%)
LV Load	(0.0%)	0	81,967	(45.8%)
Crete Load	(0.0%)	0	7,242	(4.0%)
Pumping	(0.0%)	0	110	(0.1%)
Exports			37,483	(20.9%)
Sys.Losses	(0.0%)	0	2,391	(1.3%)
D/R Load	(0.0%)	0	0	(0.0%)

