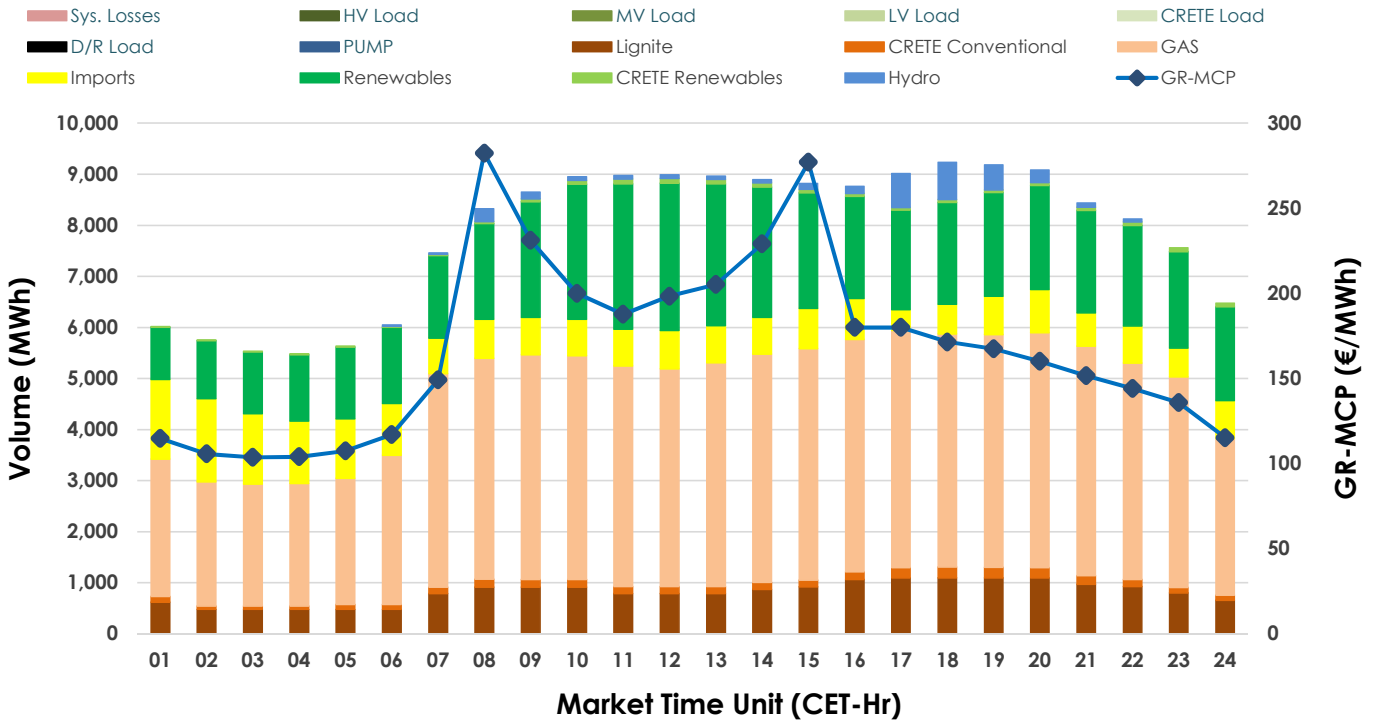
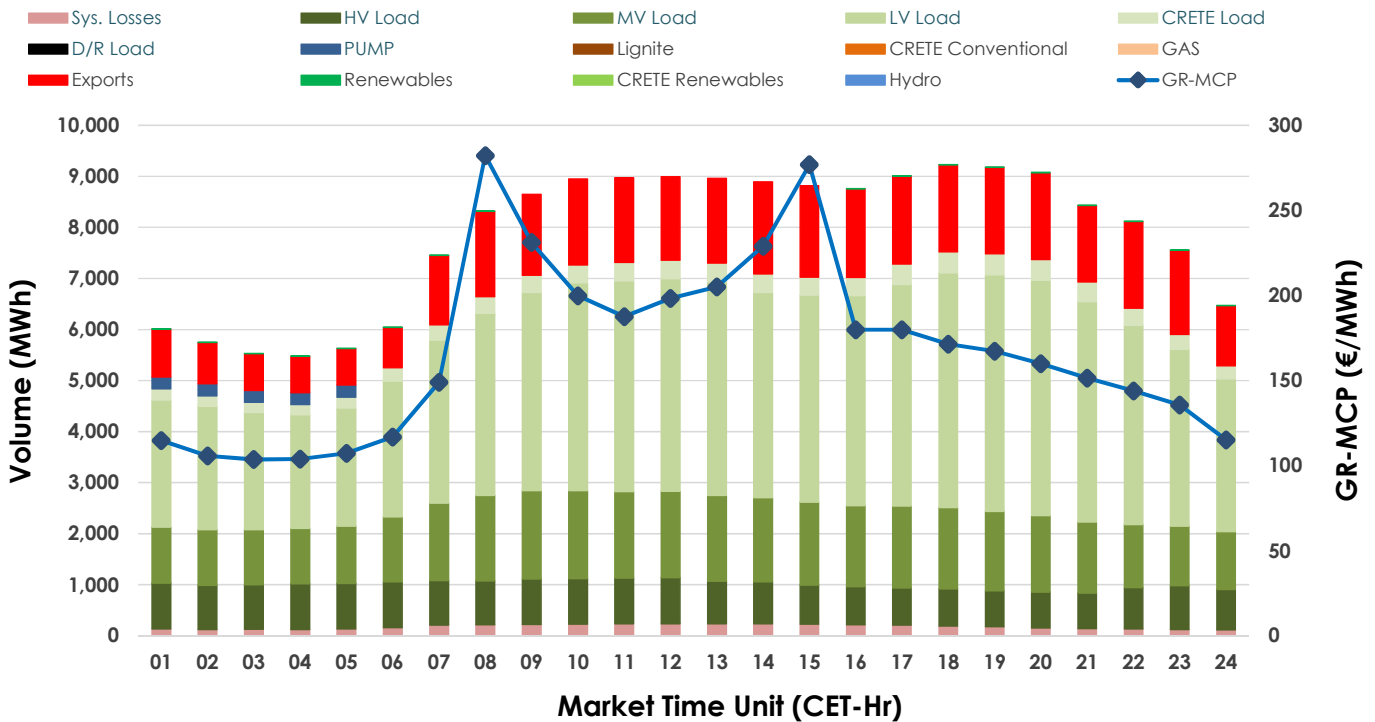


## 05.12.2024 Day-Ahead Market - Sell



## 05.12.2024 Day-Ahead Market - Buy



## GR Bidding Zone Weekly Figures

Delivery Day	29.11	30.11	01.12	02.12	03.12	04.12	05.12
	↘-6%	↘-15%	↘-13%	↗31%	↗13%	↗13%	↘-4%
Avg.MCP (€/MWh)	138.95	118.34	103.45	135.83	153.62	173.78	167.39
Max.MCP (€/MWh)	178.88	144.23	157.86	178.46	210.62	318.10	282.23
Min.MCP (€/MWh)	103.36	102.07	82.38	68.25	107.19	110.28	103.65
	→ 0%	↘-3%	↘-11%	↗18%	↗5%	↘-1%	↗2%
Tot.Vol(GWh)	346.67	336.82	301.15	355.10	372.77	367.66	376.72

## Trades by Order Type

Delivery Day	29.11	30.11	01.12	02.12	03.12	04.12	05.12
Order P.T	Sell & Buy Trades in (GWh) per Price Type						
PPT (S)	51.908	60.371	59.973	55.550	54.473	44.690	56.383
HBD (S)	47.462	50.503	42.071	54.621	58.229	47.953	54.174
BLK (S)	59.328	54.868	40.460	55.137	68.244	82.644	63.761
CPL (S)	14.636	2.668	8.070	12.243	5.438	8.544	14.043
PPT (B)	16.783	14.833	12.157	15.405	15.747	17.733	16.998
HBD (B)	141.022	134.182	129.455	147.669	150.927	145.779	149.884
BLK (B)							
CPL (B)	15.529	19.396	8.962	14.476	19.710	20.319	21.479
Order P.T	Sell & Buy Orders Traded per Price Type						
PPT (S)	601	582	665	579	588	569	584
HBD (S)	832	963	829	819	897	885	875
BLK (S)	289	279	206	259	328	404	310
PPT (B)	729	703	633	708	706	732	735
HBD (B)	1279	1251	1238	1320	1350	1235	1330
BLK (B)							

<b>MCP</b>	Market Clearing Price (€/MWh)
<b>PPT</b>	Priority Price-Taking
<b>HBD</b>	Hybrid
<b>BLK</b>	Block
<b>CPL</b>	Market Coupling Flow

## Trade's Volume Mix

	Sell - MWh	Buy - MWh	
Lignite	(10.3%) 19,488	0	(0.0%)
Crete Conv.	(1.7%) 3,291	0	(0.0%)
Gas	(49.6%) 93,366	0	(0.0%)
Hydro	(1.7%) 3,290	0	(0.0%)
Imports	(11.0%) 20,674		
RES	(24.9%) 46,987	113	(0.1%)
Crete RES	(0.7%) 1,267	0	(0.0%)
HV Load	(0.0%) 0	19,801	(10.5%)
MV Load	(0.0%) 0	34,485	(18.3%)
LV Load	(0.0%) 0	86,578	(46.0%)
Crete Load	(0.0%) 0	7,708	(4.1%)
Pumping	(0.0%) 0	1,175	(0.6%)
Exports		34,145	(18.1%)
Sys.Losses	(0.0%) 0	4,356	(2.3%)
D/R Load	(0.0%) 0	0	(0.0%)

