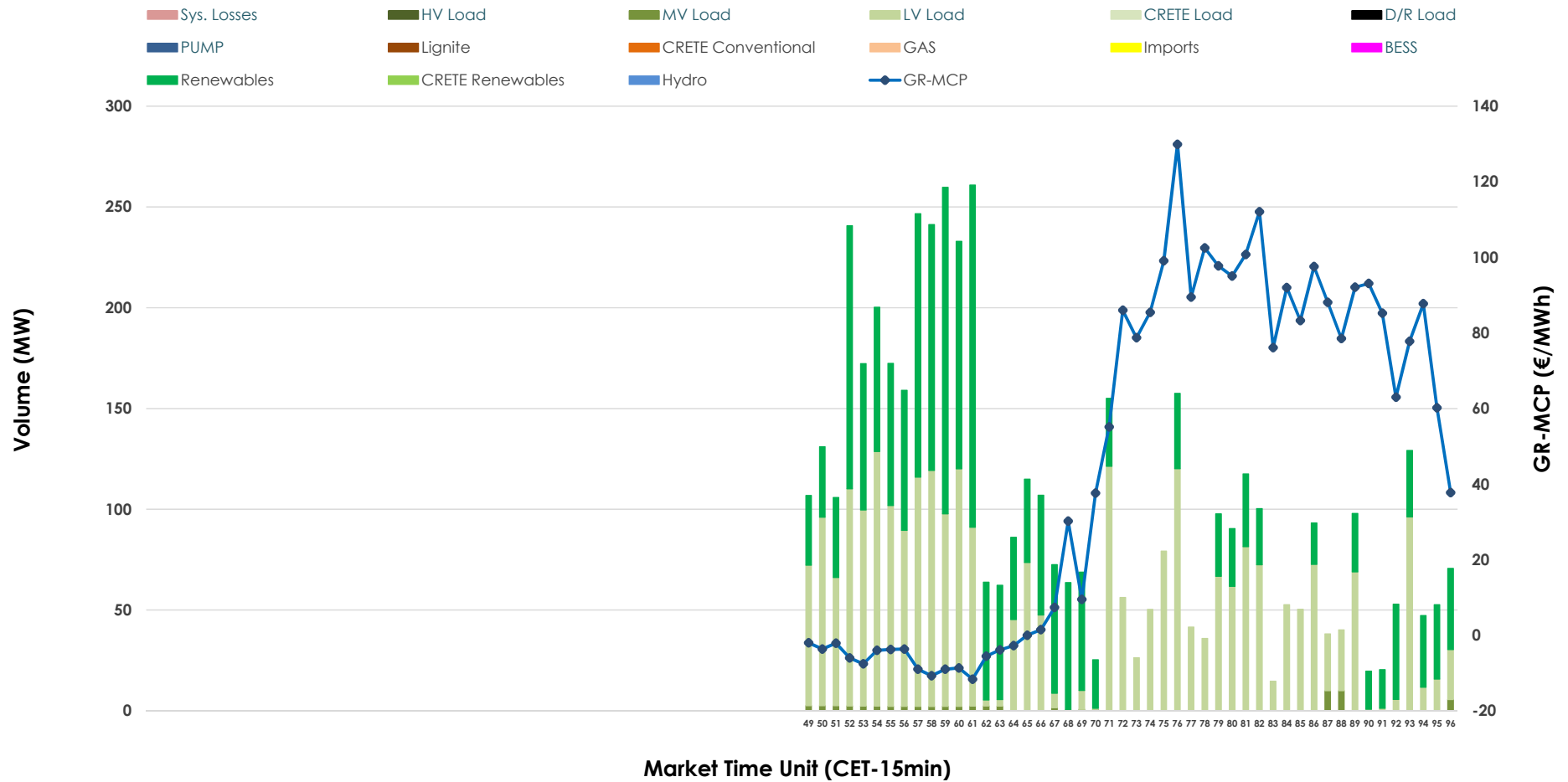


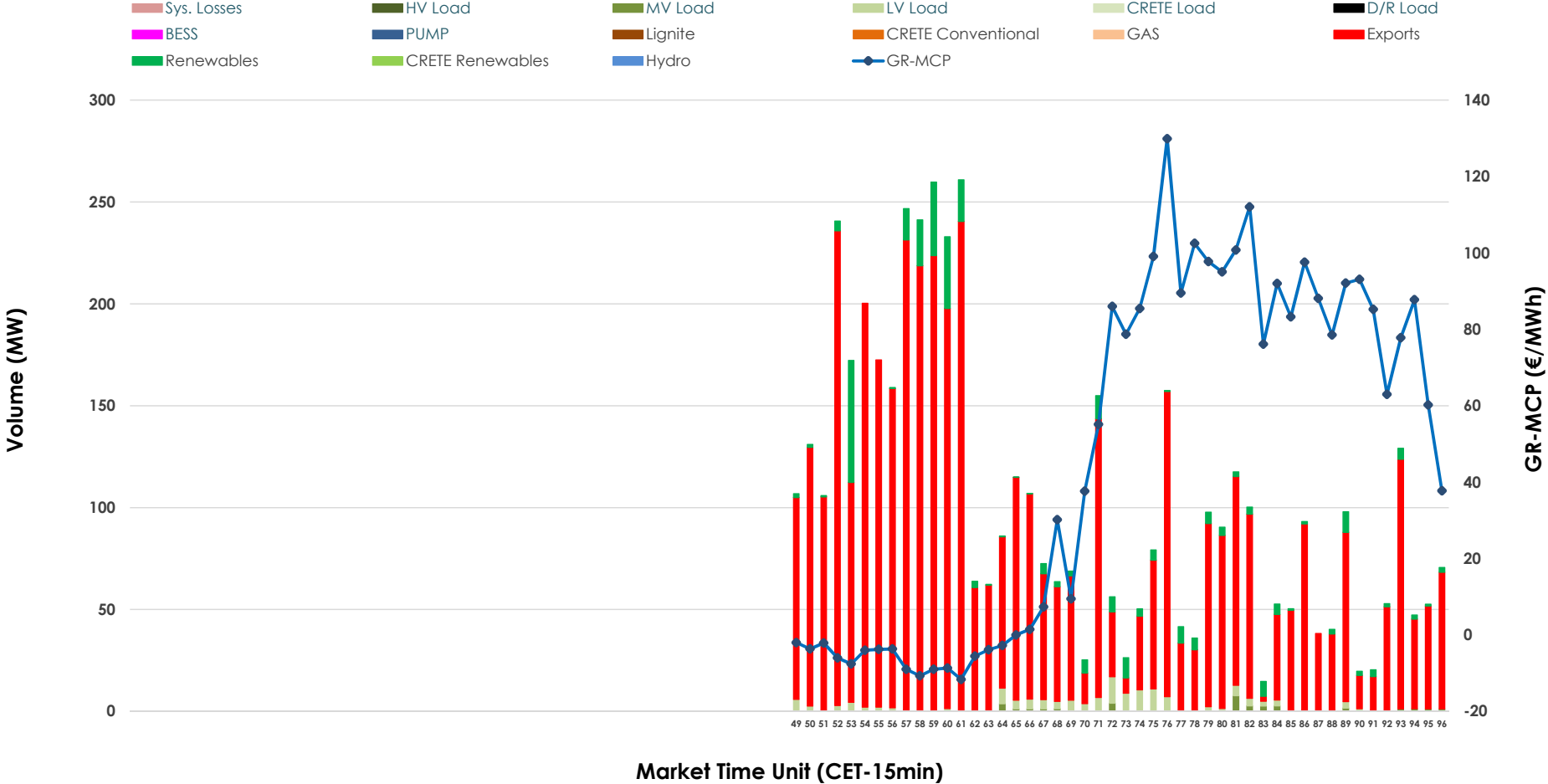


IDA '3' Market Outlook

04.04.2026 IDA '3' Market - Sell



04.04.2026 IDA '3' Market - Buy



GR Bidding Zone Weekly Figures

Delivery Day	29.03	30.03	31.03	01.04	02.04	03.04	04.04
	👇 -31%	👆 76%	👉 19%			👇 -3%	👇 -65%
Avg.MCP (€/MWh)	70.23	123.82	147.08	N/M	136.63	132.06	46.60
Max.MCP (€/MWh)	145.02	223.00	225.64	N/M	190.13	203.39	129.90
Min.MCP (€/MWh)	-18.36	-19.98	93.62	N/M	104.38	59.05	-11.64
	👇 -28%	👆 45%	👇 -22%			👇 -17%	👇 -30%
Tot.Vol(GWh)	1.47	2.13	1.67	N/M	4.25	3.55	2.49

Trades by Order Type

Delivery Day		29.03	30.03	31.03	01.04	02.04	03.04	04.04	
Ord Price Type		Sell & Buy Trades in (GWh) per Price Type							(%)
PPT	(S)	0.000	0.000	0.000		0.000	0.000	0.000	0.00%
HBD	(S)	0.667	0.789	0.673		0.189	0.695	1.245	100.00%
BLK	(S)	0.000	0.000	0.000		0.000	0.000	0.000	0.00%
CPL	(S)	0.070	0.275	0.161		1.938	1.080	0.000	0.00%
PPT	(B)	0.000	0.000	0.000		0.000	0.000	0.000	0.00%
HBD	(B)	0.249	0.960	0.707		1.640	0.807	0.126	10.10%
BLK	(B)	0.000	0.000	0.000		0.000	0.000	0.000	0.00%
CPL	(B)	0.487	0.104	0.127		0.487	0.968	1.120	89.90%
		Sell & Buy Orders Traded per Price Type							(%)
PPT	(S)	0	0	0		0	0	0	0.00%
HBD	(S)	193	244	169		143	309	206	100.00%
BLK	(S)	0	0	0		0	0	0	0.00%
PPT	(B)	0	0	0		0	0	0	0.00%
HBD	(B)	130	241	280		412	283	112	100.00%
BLK	(B)	0	0	0		0	0	0	0.00%

- MCP** Market Clearing Price (€/MWh)
- PPT** Priority Price-Taking
- HBD** Hybrid
- BLK** Block
- CPL** Market Coupling Flow

Trade's Volume Mix

		Sell - MWh		Buy - MWh	
Lignite	(0.0%)	0	0	0	(0.0%)
Crete Conv.	(0.0%)	0	0	0	(0.0%)
Gas	(0.0%)	0	0	0	(0.0%)
Hydro	(0.0%)	0	0	0	(0.0%)
Imports	(0.0%)	0	0	0	(0.0%)
RES	(43.4%)	540	82	622	(6.6%)
Crete RES	(0.0%)	0	0	0	(0.0%)
BESS	(0.0%)	0	0	0	(0.0%)
HV Load	(0.0%)	0	0	0	(0.0%)
MV Load	(1.3%)	16	9	25	(0.7%)
LV Load	(55.3%)	689	35	724	(2.8%)
Crete Load	(0.0%)	0	0	0	(0.0%)
Pumping	(0.0%)	0	0	0	(0.0%)
Exports				1,120	(89.9%)
Sys.Losses	(0.0%)	0	0	0	(0.0%)
D/R Load	(0.0%)	0	0	0	(0.0%)

