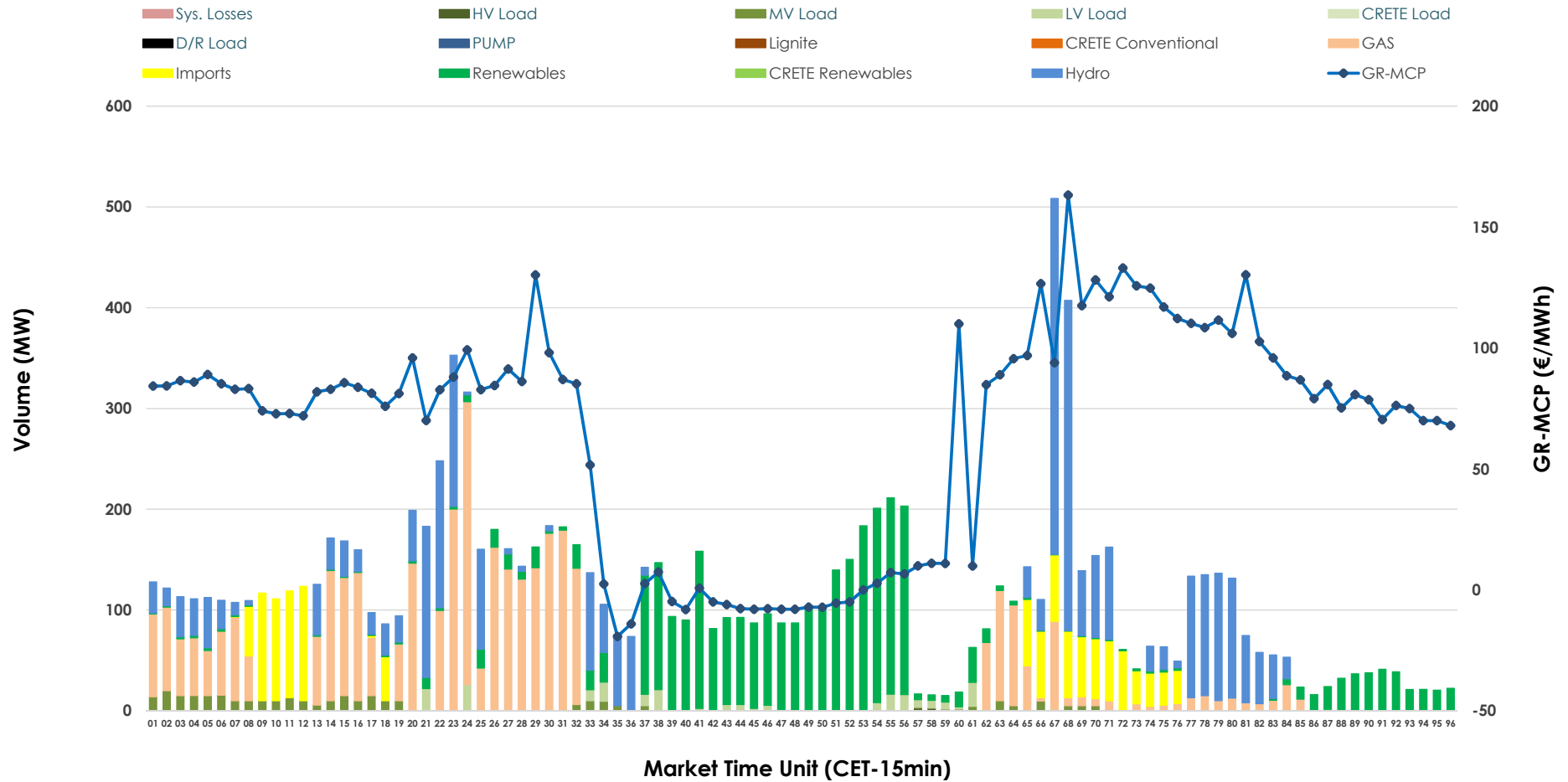


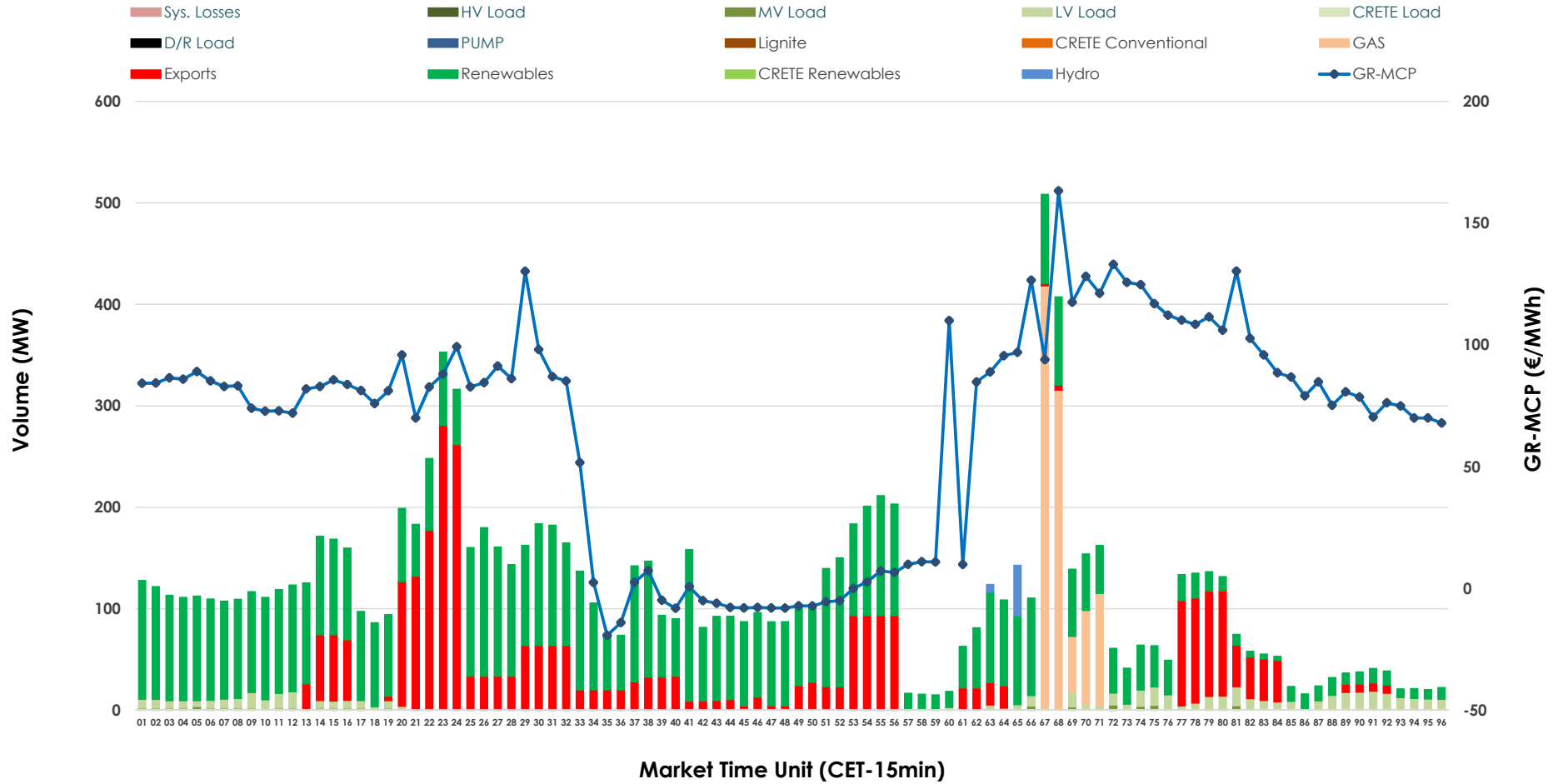


IDA '2' Market Outlook

16.02.2026 IDA '2' Market - Sell



16.02.2026 IDA '2' Market - Buy



GR Bidding Zone Weekly Figures

Delivery Day	10.02	11.02	12.02	13.02	14.02	15.02	16.02
	👇 -14%	👇 -15%	👇 -18%	👆 12%	👇 -30%	👇 -62%	👆 180%
Avg.MCP (€/MWh)	112.78	95.73	78.95	88.63	61.90	23.54	66.00
Max.MCP (€/MWh)	184.09	159.65	112.99	146.81	112.77	77.08	163.22
Min.MCP (€/MWh)	85.49	55.29	0.01	-15.43	-8.55	-24.99	-19.29
	👆 30%	👇 -14%	👆 15%	👆 0%	👇 -36%	👇 -12%	👆 122%
Tot.Vol(GWh)	4.54	3.91	4.49	4.47	2.88	2.55	5.66

Trades by Order Type

Delivery Day		10.02	11.02	12.02	13.02	14.02	15.02	16.02	
Ord Price Type		Sell & Buy Trades in (GWh) per Price Type							(%)
PPT	(S)	0.000	0.000	0.000	0.000	0.000	0.000	0.000	0.00%
HBD	(S)	2.028	1.654	2.213	0.882	1.145	1.209	2.542	89.79%
BLK	(S)	0.000	0.000	0.000	0.000	0.000	0.000	0.000	0.00%
CPL	(S)	0.240	0.304	0.034	1.354	0.293	0.064	0.289	10.21%
PPT	(B)	0.000	0.000	0.000	0.000	0.000	0.000	0.000	0.00%
HBD	(B)	1.857	1.152	2.160	2.197	1.369	1.073	2.077	73.37%
BLK	(B)	0.000	0.000	0.000	0.000	0.000	0.000	0.000	0.00%
CPL	(B)	0.411	0.806	0.086	0.040	0.070	0.200	0.754	26.63%
		Sell & Buy Orders Traded per Price Type							(%)
PPT	(S)	0	0	0	0	0	0	0	0.00%
HBD	(S)	173	264	270	160	156	230	248	100.00%
BLK	(S)	0	0	0	0	0	0	0	0.00%
PPT	(B)	0	0	0	0	0	0	0	0.00%
HBD	(B)	477	470	456	614	616	366	331	100.00%
BLK	(B)	0	0	0	0	0	0	0	0.00%

- MCP** Market Clearing Price (€/MWh)
- PPT** Priority Price-Taking
- HBD** Hybrid
- BLK** Block
- CPL** Market Coupling Flow

Trade's Volume Mix

		Sell - MWh		Buy - MWh	
Lignite	(0.0%)	0	0	0	(0.0%)
Crete Conv.	(0.0%)	0	0	0	(0.0%)
Gas	(30.9%)	874	247		(8.7%)
Hydro	(26.9%)	762	14		(0.5%)
Imports	(10.2%)	289			
RES	(27.2%)	771	1,666		(58.8%)
Crete RES	(0.0%)	0	0		(0.0%)
HV Load	(0.1%)	2	0		(0.0%)
MV Load	(2.8%)	78	16		(0.6%)
LV Load	(2.0%)	56	134		(4.7%)
Crete Load	(0.0%)	0	0		(0.0%)
Pumping	(0.0%)	0	0		(0.0%)
Exports				754	(26.6%)
Sys.Losses	(0.0%)	0	0		(0.0%)
D/R Load	(0.0%)	0	0		(0.0%)

