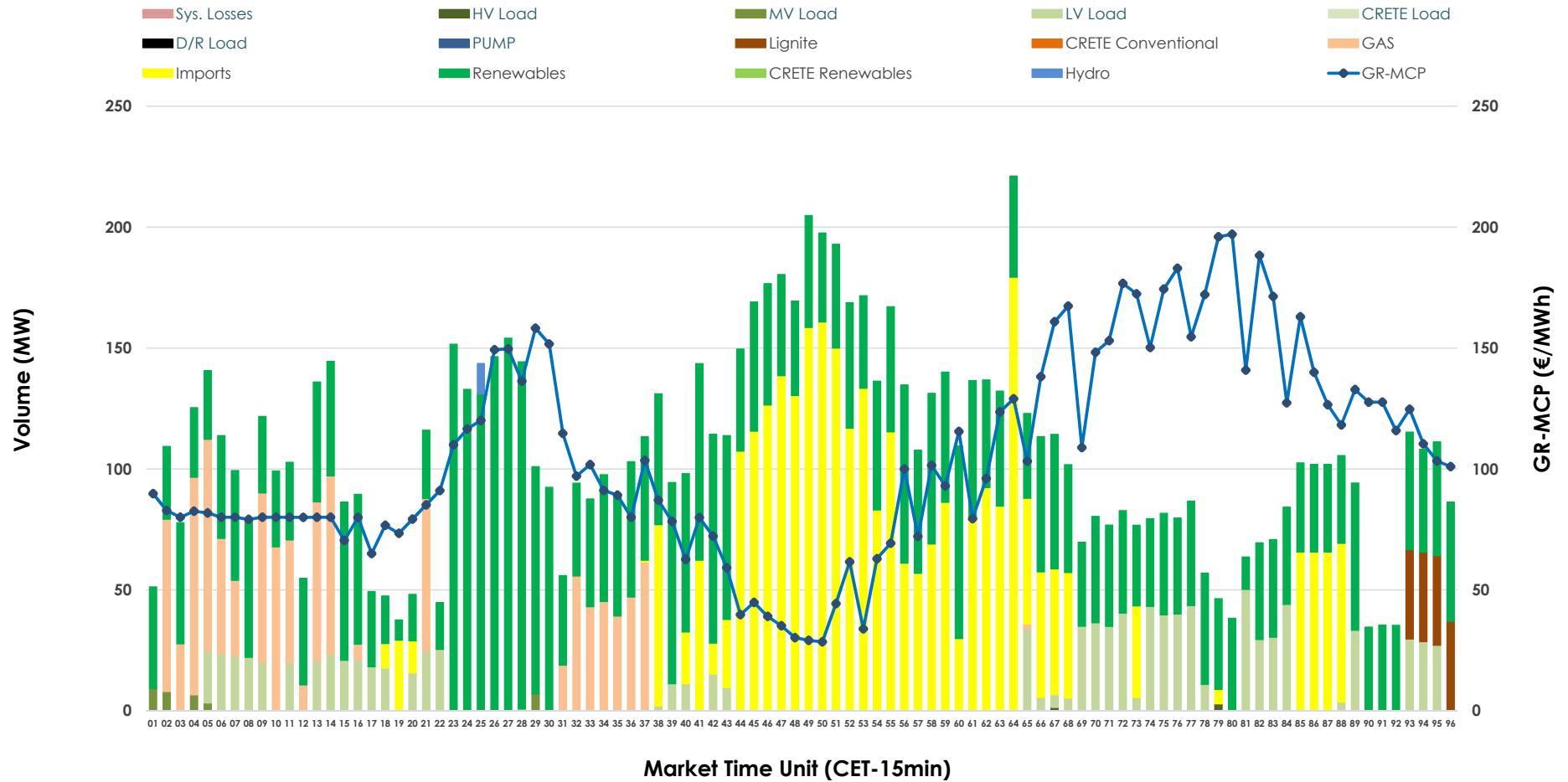


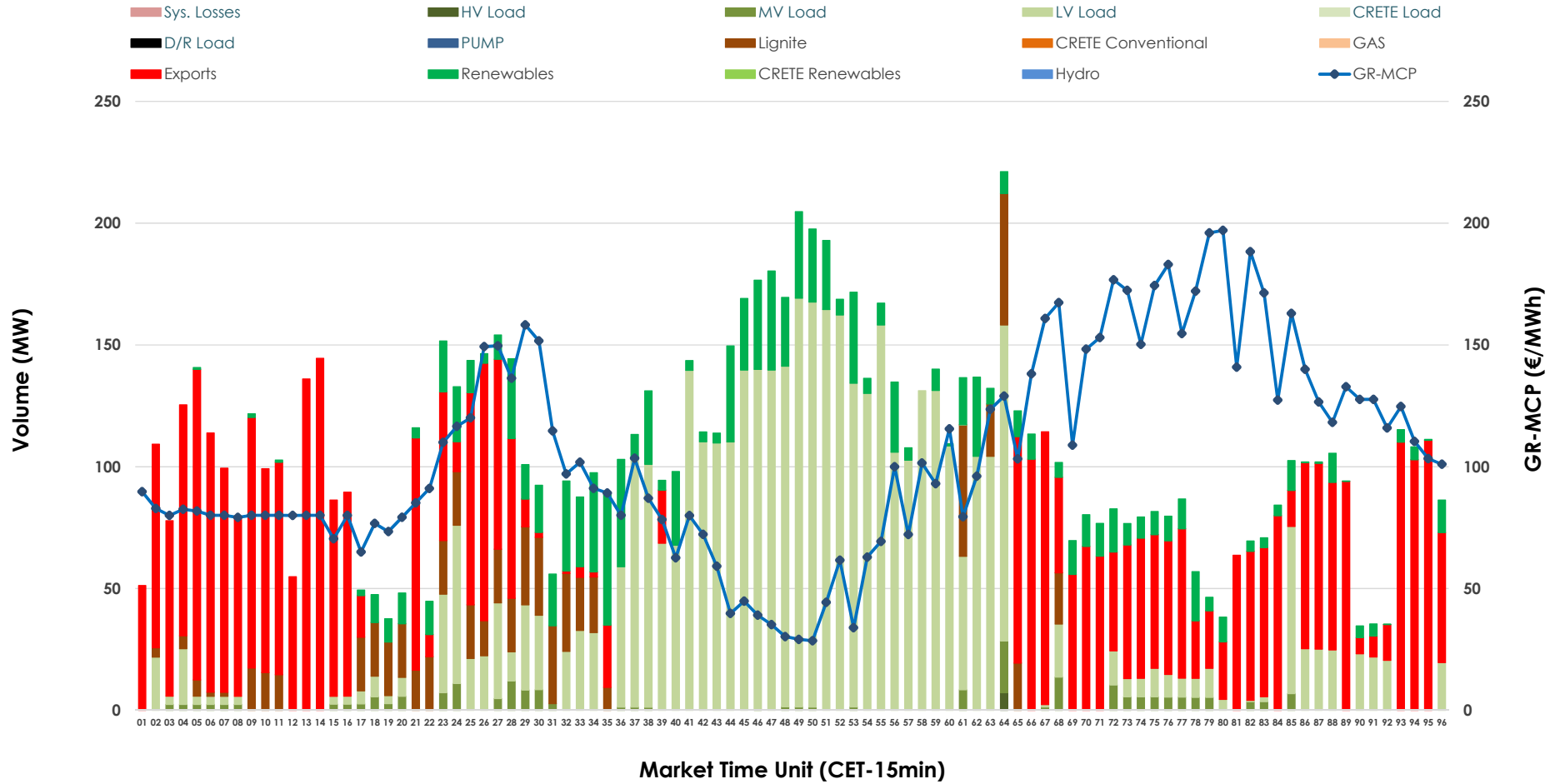


IDA '2' Market Outlook

16.03.2026 IDA '2' Market - Sell



16.03.2026 IDA '2' Market - Buy



GR Bidding Zone Weekly Figures

Delivery Day	10.03	11.03	12.03	13.03	14.03	15.03	16.03
	👇 -2%	👆 23%	👆 14%	👇 -30%	👆 7%	👇 -6%	👆 34%
Avg.MCP (€/MWh)	79.21	97.04	110.47	77.52	83.21	78.46	104.89
Max.MCP (€/MWh)	241.49	251.11	245.21	202.79	177.47	172.20	197.06
Min.MCP (€/MWh)	-20.20	-5.65	-5.52	-24.50	-20.66	-21.83	28.53
	👇 -8%	➡ 0%	👇 -26%	👆 68%	👇 -25%	👆 30%	👇 -17%
Tot.Vol(GWh)	5.15	5.13	3.81	6.41	4.78	6.22	5.17

Trades by Order Type

Delivery Day		10.03	11.03	12.03	13.03	14.03	15.03	16.03	
Ord Price Type		Sell & Buy Trades in (GWh) per Price Type							(%)
PPT	(S)	0.000	0.000	0.000	0.000	0.000	0.000	0.000	0.00%
HBD	(S)	2.427	1.646	1.294	3.108	1.681	1.893	1.823	70.55%
BLK	(S)	0.000	0.000	0.000	0.000	0.000	0.000	0.000	0.00%
CPL	(S)	0.150	0.918	0.610	0.097	0.711	1.216	0.761	29.45%
PPT	(B)	0.000	0.000	0.000	0.000	0.000	0.000	0.000	0.00%
HBD	(B)	1.250	2.181	1.045	1.311	2.145	2.551	1.583	61.25%
BLK	(B)	0.000	0.000	0.000	0.000	0.000	0.000	0.000	0.00%
CPL	(B)	1.327	0.383	0.859	1.894	0.246	0.559	1.001	38.75%
		Sell & Buy Orders Traded per Price Type							(%)
PPT	(S)	0	0	0	0	0	0	0	0.00%
HBD	(S)	272	338	291	287	277	292	391	100.00%
BLK	(S)	0	0	0	0	0	0	0	0.00%
PPT	(B)	0	0	0	0	0	0	0	0.00%
HBD	(B)	443	362	315	286	376	577	341	100.00%
BLK	(B)	0	0	0	0	0	0	0	0.00%

MCP Market Clearing Price (€/MWh)
PPT Priority Price-Taking
HBD Hybrid
BLK Block
CPL Market Coupling Flow

Trade's Volume Mix

	Sell - MWh	Buy - MWh	
Lignite (1.4%)	37	167	(6.5%)
Crete Conv. (0.0%)	0	0	(0.0%)
Gas (10.4%)	269	0	(0.0%)
Hydro (0.1%)	3	0	(0.0%)
Imports (29.5%)	761		
RES (48.3%)	1,248	296	(11.4%)
Crete RES (0.0%)	0	0	(0.0%)
HV Load (0.0%)	1	2	(0.1%)
MV Load (0.3%)	9	52	(2.0%)
LV Load (9.9%)	256	1,066	(41.3%)
Crete Load (0.0%)	0	0	(0.0%)
Pumping (0.0%)	0	0	(0.0%)
Exports		1,001	(38.7%)
Sys.Losses (0.0%)	0	0	(0.0%)
D/R Load (0.0%)	0	0	(0.0%)

