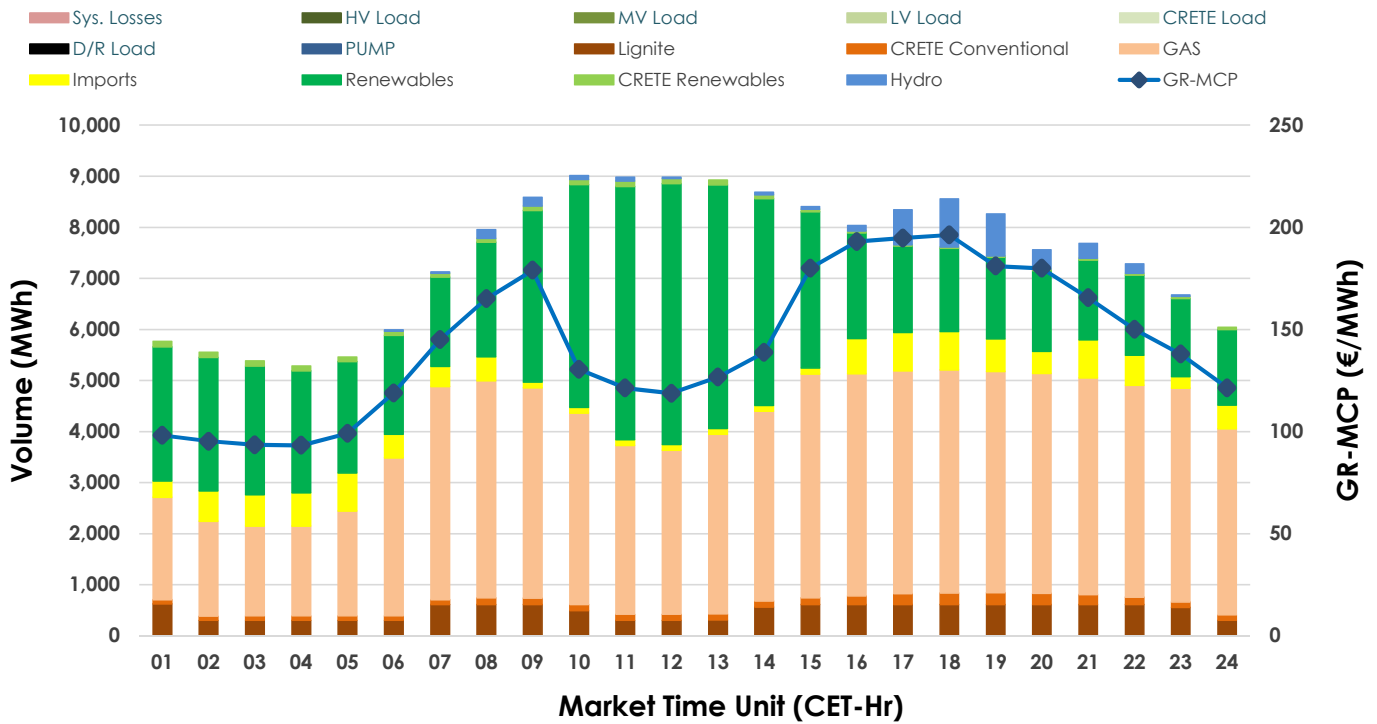


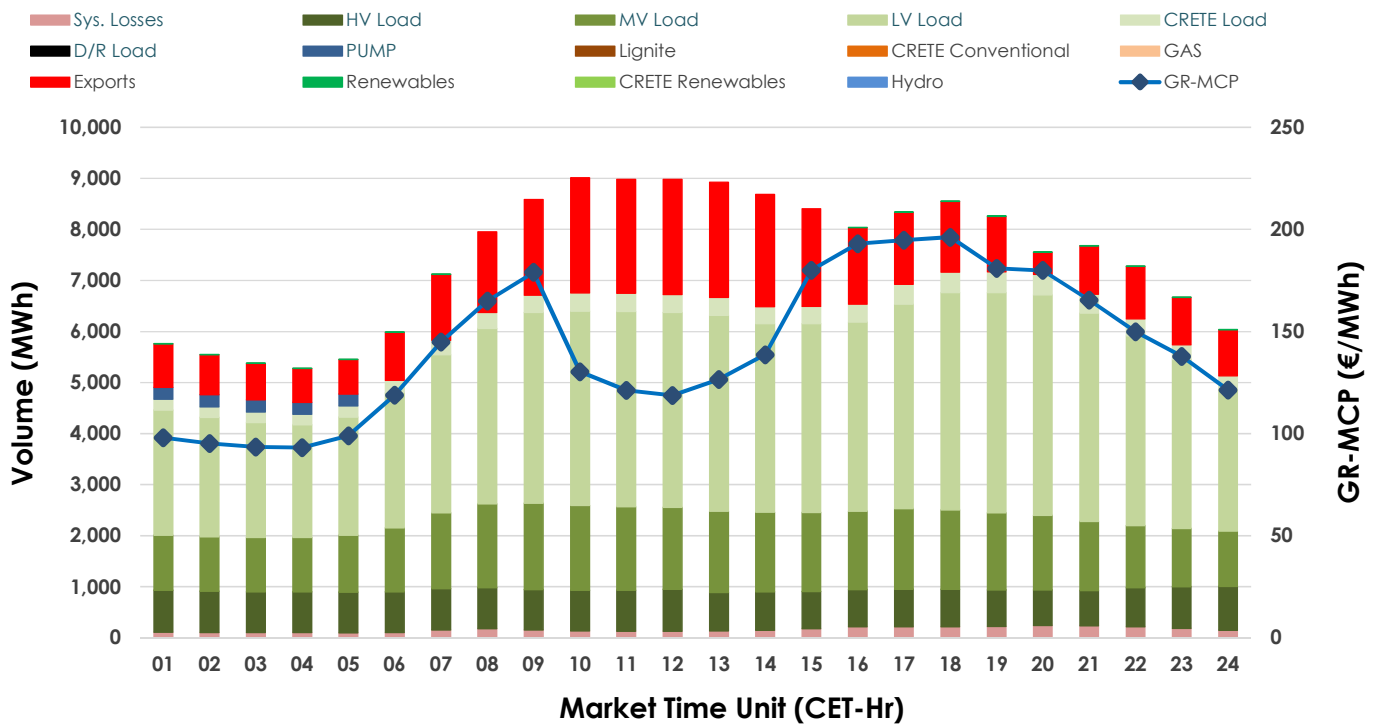


# Day-Ahead Market Outlook

## 10.12.2024 Day-Ahead Market - Sell



## 10.12.2024 Day-Ahead Market - Buy



## GR Bidding Zone Weekly Figures

Delivery Day	04.12	05.12	06.12	07.12	08.12	09.12	10.12
	↗13%	↘-4%	↘-12%	↘-11%	↘-17%	↗8%	↗21%
Avg.MCP (€/MWh)	173.78	167.39	147.02	131.48	109.17	117.58	142.59
Max.MCP (€/MWh)	318.10	282.23	180.97	178.47	137.88	178.88	196.22
Min.MCP (€/MWh)	110.28	103.65	100.21	71.36	87.30	35.35	93.19
	↘-1%	↗2%	↘-7%	↘-4%	↘-6%	↗15%	↘-2%
Tot.Vol(GWh)	367.66	376.72	351.31	336.88	315.91	363.01	357.07

## Trades by Order Type

Delivery Day	04.12	05.12	06.12	07.12	08.12	09.12	10.12
Order P.T	Sell & Buy Trades in (GWh) per Price Type						
PPT (S)	44.690	56.383	48.226	56.400	64.189	71.357	61.926
HBD (S)	47.953	54.174	48.119	50.865	50.262	60.832	55.390
BLK (S)	82.644	63.761	64.068	49.569	39.460	46.039	56.363
CPL (S)	8.544	14.043	15.245	11.608	4.045	3.278	4.856
PPT (B)	17.733	16.998	15.729	14.784	13.639	15.973	16.677
HBD (B)	145.779	149.884	148.063	135.986	126.977	139.383	140.831
BLK (B)							
CPL (B)	20.319	21.479	11.866	17.672	17.340	26.150	21.028
Order P.T	Sell & Buy Orders Traded per Price Type						
PPT (S)	569	584	565	575	623	561	536
HBD (S)	885	875	926	878	807	738	881
BLK (S)	404	310	321	239	209	236	282
PPT (B)	732	735	695	729	739	769	762
HBD (B)	1235	1330	1295	1313	1269	1417	1377
BLK (B)							

<b>MCP</b>	Market Clearing Price (€/MWh)
<b>PPT</b>	Priority Price-Taking
<b>HBD</b>	Hybrid
<b>BLK</b>	Block
<b>CPL</b>	Market Coupling Flow

## Trade's Volume Mix

	Sell - MWh	Buy - MWh	
Lignite	(6.6%) 11,738	0	(0.0%)
Crete Conv.	(1.8%) 3,180	0	(0.0%)
Gas	(47.6%) 84,920	0	(0.0%)
Hydro	(2.3%) 4,099	0	(0.0%)
Imports	(5.8%) 10,337		
RES	(35.1%) 62,618	108	(0.1%)
Crete RES	(0.9%) 1,644	0	(0.0%)
HV Load	(0.0%) 0	18,603	(10.4%)
MV Load	(0.0%) 0	33,493	(18.8%)
LV Load	(0.0%) 0	81,633	(45.7%)
Crete Load	(0.0%) 0	7,522	(4.2%)
Pumping	(0.0%) 0	1,175	(0.7%)
Exports		32,097	(18.0%)
Sys.Losses	(0.0%) 0	3,906	(2.2%)
D/R Load	(0.0%) 0	0	(0.0%)

