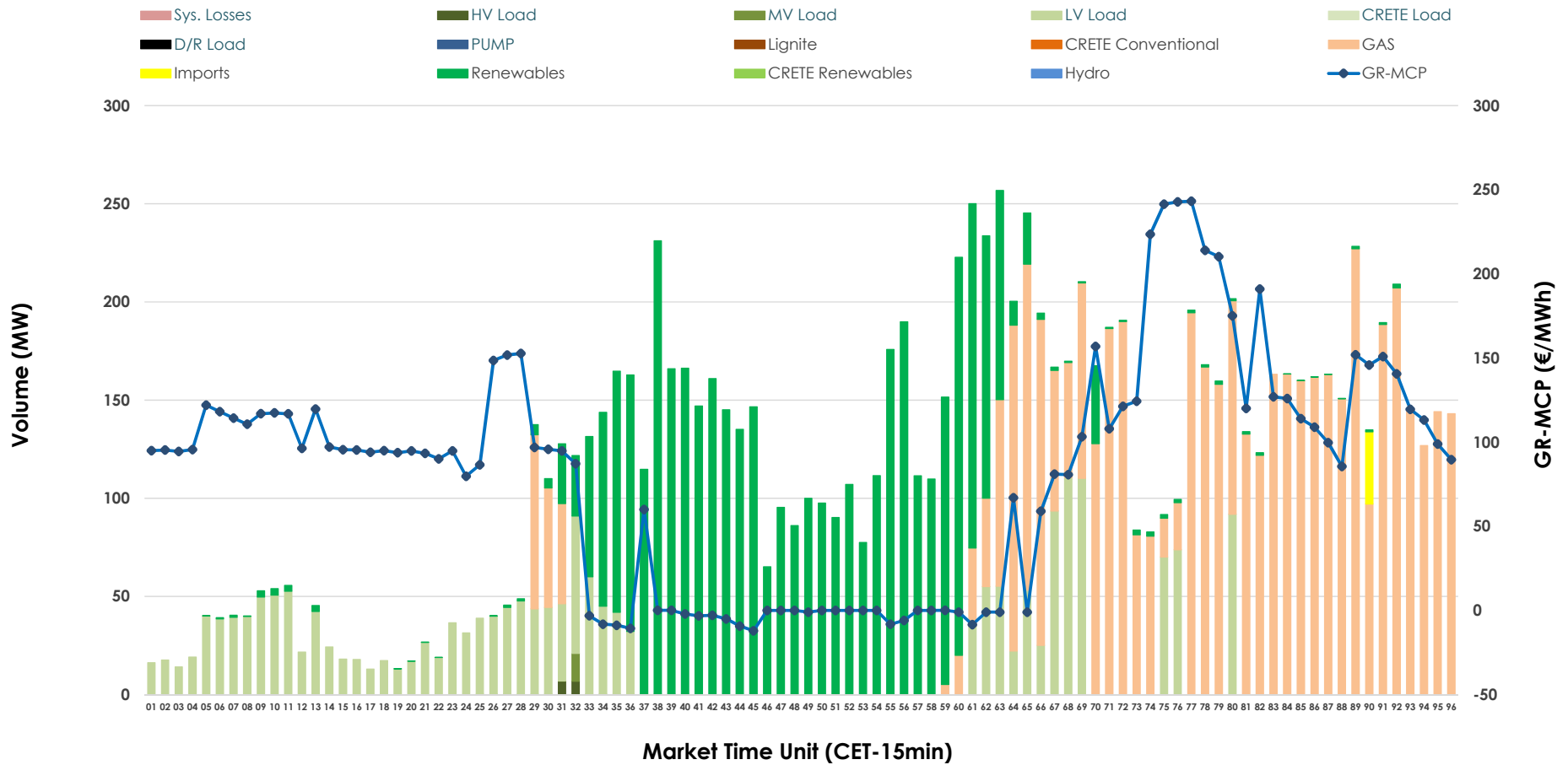


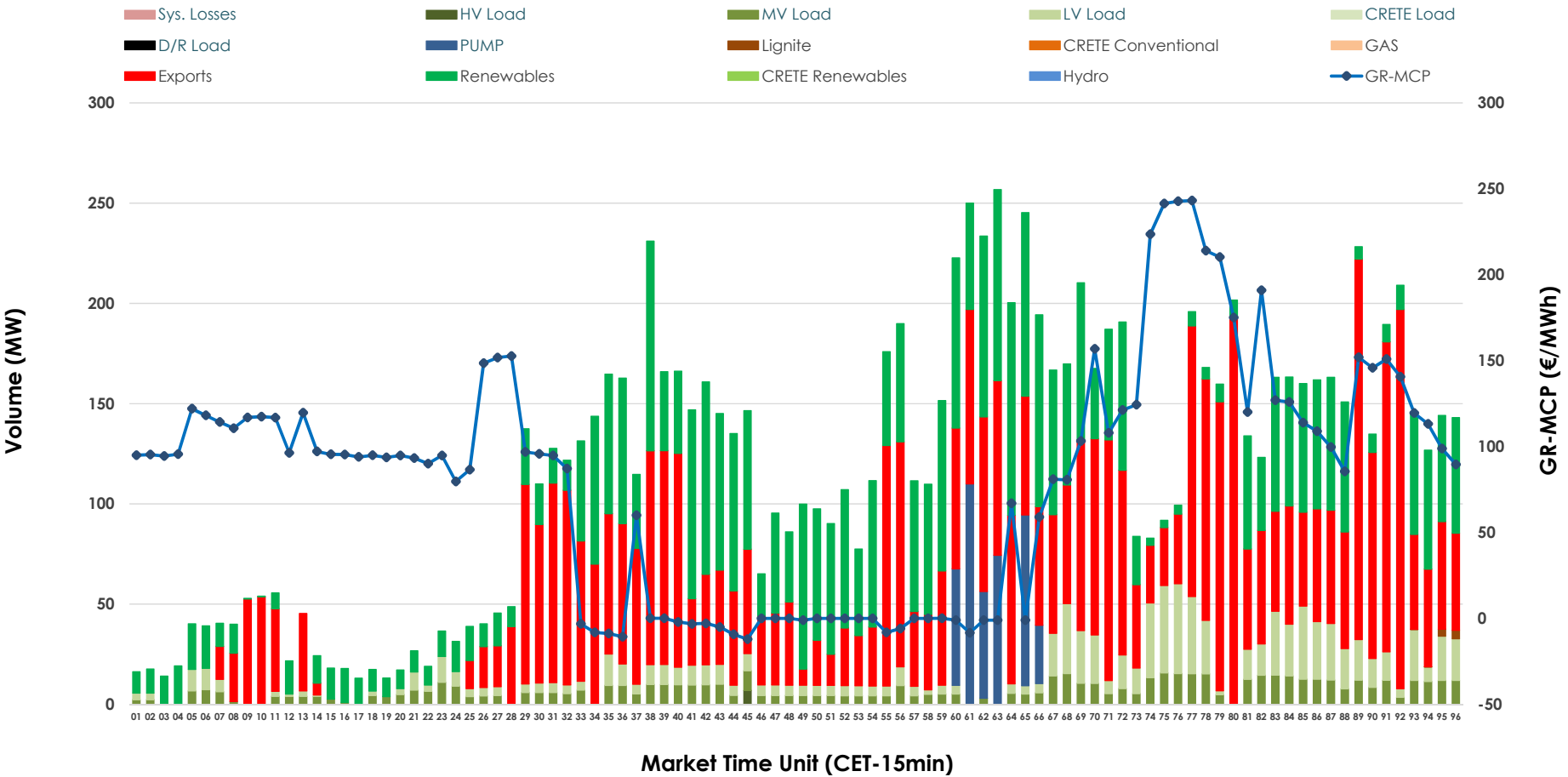


# IDA '2' Market Outlook

09.03.2026 IDA '2' Market - Sell



09.03.2026 IDA '2' Market - Buy



### GR Bidding Zone Weekly Figures

Delivery Day	03.03	04.03	05.03	06.03	07.03	08.03	09.03
	↑ 35%	↓ -13%	↔ 3%	↓ -18%	↔ 1%	↓ -5%	↔ 6%
<b>Avg.MCP (€/MWh)</b>	109.02	94.68	97.40	79.46	80.40	76.18	80.76
<b>Max.MCP (€/MWh)</b>	254.11	263.83	207.30	210.88	165.43	151.84	243.16
<b>Min.MCP (€/MWh)</b>	9.57	-7.85	4.08	-22.00	-20.95	-15.92	-12.08
	↓ -2%	↓ -25%	↓ -13%	↔ 28%	↑ 42%	↓ -9%	↔ 17%
<b>Tot.Vol(GWh)</b>	4.41	3.33	2.89	3.70	5.27	4.80	5.63

### Trades by Order Type

Delivery Day	03.03	04.03	05.03	06.03	07.03	08.03	09.03	
<b>Ord Price Type</b>	Sell & Buy Trades in (GWh) per Price Type							(%)
<b>PPT (S)</b>	0.000	0.000	0.000	0.000	0.000	0.000	0.000	0.00%
<b>HBD (S)</b>	1.052	1.325	0.976	1.168	2.449	2.243	2.807	99.67%
<b>BLK (S)</b>	0.000	0.000	0.000	0.000	0.000	0.000	0.000	0.00%
<b>CPL (S)</b>	1.155	0.338	0.469	0.684	0.188	0.158	0.009	0.33%
<b>PPT (B)</b>	0.000	0.000	0.000	0.000	0.000	0.000	0.000	0.00%
<b>HBD (B)</b>	1.971	1.525	1.145	1.085	2.455	2.050	1.503	53.39%
<b>BLK (B)</b>	0.000	0.000	0.000	0.000	0.000	0.000	0.000	0.00%
<b>CPL (B)</b>	0.236	0.138	0.301	0.766	0.181	0.351	1.313	46.61%
<b>Ord Price Type</b>	Sell & Buy Orders Traded per Price Type							(%)
<b>PPT (S)</b>	0	0	0	0	0	0	0	0.00%
<b>HBD (S)</b>	261	137	267	332	177	400	231	100.00%
<b>BLK (S)</b>	0	0	0	0	0	0	0	0.00%
<b>PPT (B)</b>	0	0	0	0	0	0	0	0.00%
<b>HBD (B)</b>	630	486	450	501	607	554	640	100.00%
<b>BLK (B)</b>	0	0	0	0	0	0	0	0.00%

- MCP** Market Clearing Price (€/MWh)
- PPT** Priority Price-Taking
- HBD** Hybrid
- BLK** Block
- CPL** Market Coupling Flow

### Trade's Volume Mix

	Sell - MWh	Buy - MWh	
<b>Lignite</b> (0.0%)	0	2	(0.1%)
<b>Crete Conv.</b> (0.0%)	0	0	(0.0%)
<b>Gas</b> (44.1%)	1,242	0	(0.0%)
<b>Hydro</b> (0.0%)	0	0	(0.0%)
<b>Imports</b> (0.3%)	9		
<b>RES</b> (37.4%)	1,052	989	(35.1%)
<b>Crete RES</b> (0.0%)	0	0	(0.0%)
<b>HV Load</b> (0.1%)	3	2	(0.1%)
<b>MV Load</b> (0.1%)	4	165	(5.8%)
<b>LV Load</b> (17.9%)	505	244	(8.6%)
<b>Crete Load</b> (0.0%)	0	0	(0.0%)
<b>Pumping</b> (0.0%)	0	103	(3.6%)
<b>Exports</b>		1,313	(46.6%)
<b>Sys.Losses</b> (0.0%)	0	0	(0.0%)
<b>D/R Load</b> (0.0%)	0	0	(0.0%)

