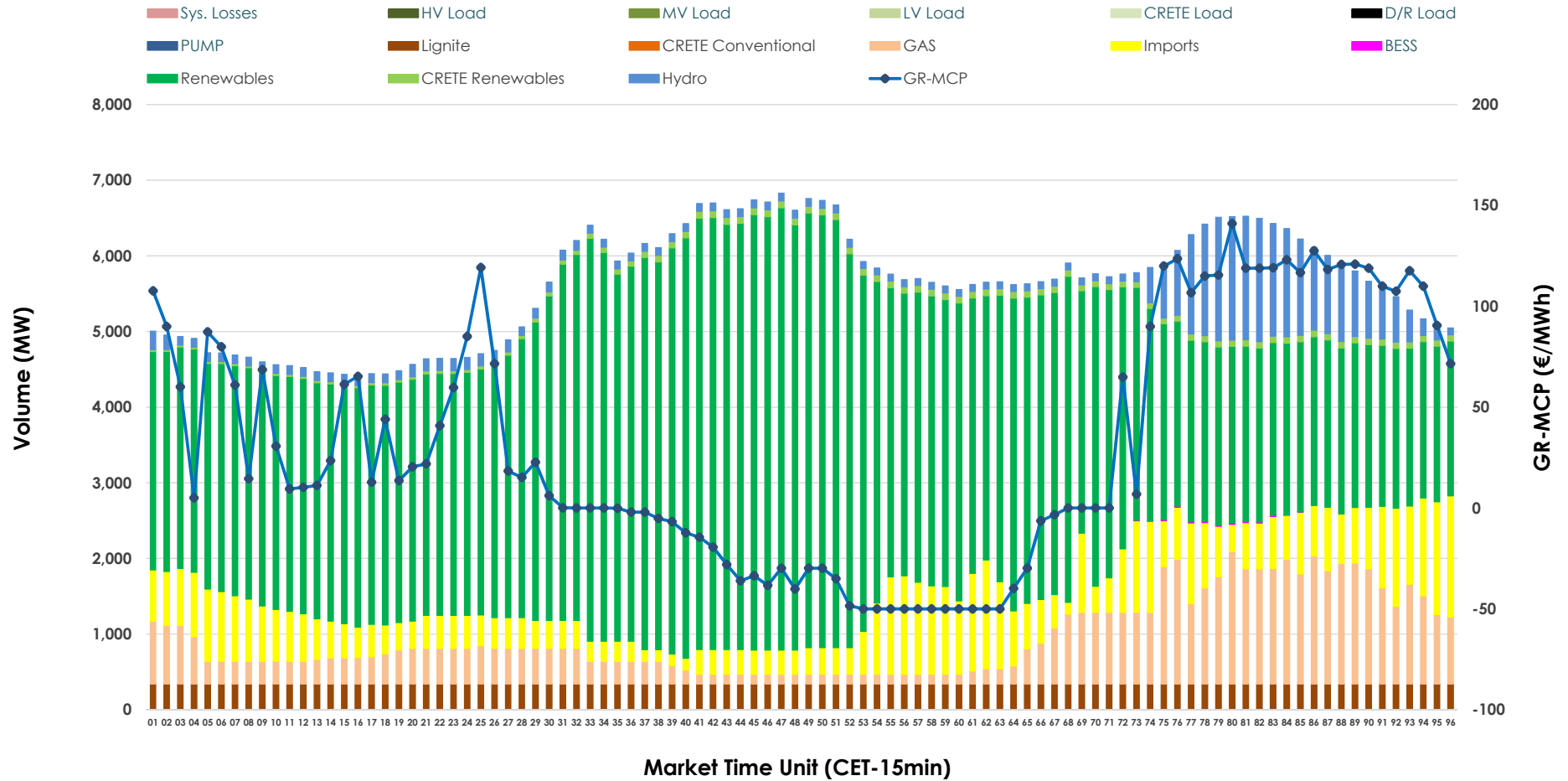


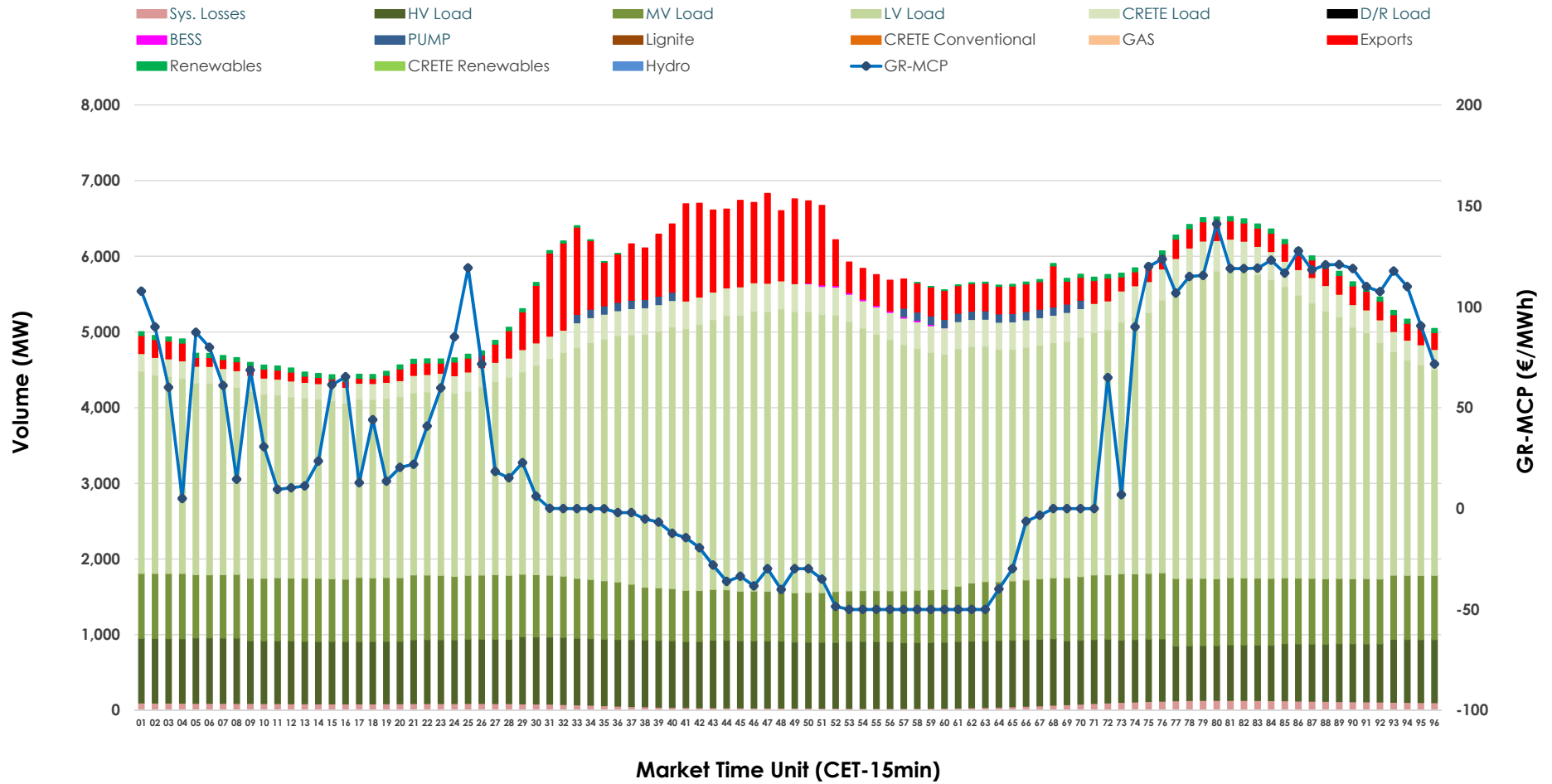


Day-Ahead Market Outlook

05.04.2026 Day-Ahead Market - Sell



05.04.2026 Day-Ahead Market - Buy



GR Bidding Zone Weekly Figures

Delivery Day	30.03	31.03	01.04	02.04	03.04	04.04	05.04
	↑ 50%	↔ 13%	↔ 16%	↓ -12%	↓ -5%	↓ -46%	↓ -56%
Avg.MCP (€/MWh)	118.01	133.84	154.99	136.58	129.62	70.29	31.16
Max.MCP (€/MWh)	223.00	218.54	239.12	196.93	215.54	187.56	141.02
Min.MCP (€/MWh)	0.02	91.97	119.18	105.00	22.09	0.00	-50.00
	↔ 10%	↔ 3%	↔ 3%	→ 0%	↓ -12%	↓ -8%	↓ -8%
Tot.Vol(GWh)	341.69	350.68	361.49	360.02	318.52	292.69	269.89

Trades by Order Type

Delivery Day		30.03	31.03	01.04	02.04	03.04	04.04	05.04	
Ord Price Type		Sell & Buy Trades in (GWh) per Price Type							(%)
PPT	(S)	52.119	53.482	56.513	68.739	50.740	54.159	67.826	50.26%
HBD	(S)	74.533	74.499	74.726	73.492	61.037	61.632	50.179	37.18%
BLK	(S)	30.517	40.412	41.726	33.560	36.198	15.314	9.239	6.85%
CPL	(S)	13.675	6.945	7.778	4.221	11.285	15.240	7.703	5.71%
PPT	(B)	13.444	14.177	14.771	14.608	13.665	13.285	12.273	9.09%
HBD	(B)	136.551	141.287	148.563	151.077	140.527	128.816	118.500	87.81%
BLK	(B)	0.000	0.000	0.000	0.000	0.000	0.000	0.000	0.00%
CPL	(B)	20.849	19.875	17.409	14.326	5.069	4.244	4.173	3.09%
		Sell & Buy Orders Traded per Price Type							(%)
PPT	(S)	1546	1555	1558	1510	1522	1606	1579	44.19%
HBD	(S)	3107	3233	3061	3012	3159	2729	1986	55.58%
BLK	(S)	15	18	20	16	16	6	8	0.22%
PPT	(B)	2243	2259	2261	2271	2238	2222	2234	33.99%
HBD	(B)	4044	4031	4083	4170	4001	4119	4339	66.01%
BLK	(B)	0	0	0	0	0	0	0	0.00%

- MCP** Market Clearing Price (€/MWh)
- PPT** Priority Price-Taking
- HBD** Hybrid
- BLK** Block
- CPL** Market Coupling Flow

Trade's Volume Mix

		Sell - MWh	Buy - MWh	
Lignite	(6.0%)	8,160	0	(0.0%)
Crete Conv.	(0.0%)	0	0	(0.0%)
Gas	(10.9%)	14,742	0	(0.0%)
Hydro	(5.7%)	7,699	0	(0.0%)
Imports	(11.6%)	15,620		
RES	(64.5%)	87,057	821	(0.6%)
Crete RES	(1.2%)	1,629	0	(0.0%)
BESS	(0.0%)	41	50	(0.0%)
HV Load	(0.0%)	0	20,166	(14.9%)
MV Load	(0.0%)	0	19,183	(14.2%)
LV Load	(0.0%)	0	74,696	(55.4%)
Crete Load	(0.0%)	0	7,564	(5.6%)
Pumping	(0.0%)	0	605	(0.4%)
Exports			9,965	(7.4%)
Sys.Losses	(0.0%)	0	1,897	(1.4%)
D/R Load	(0.0%)	0	0	(0.0%)

