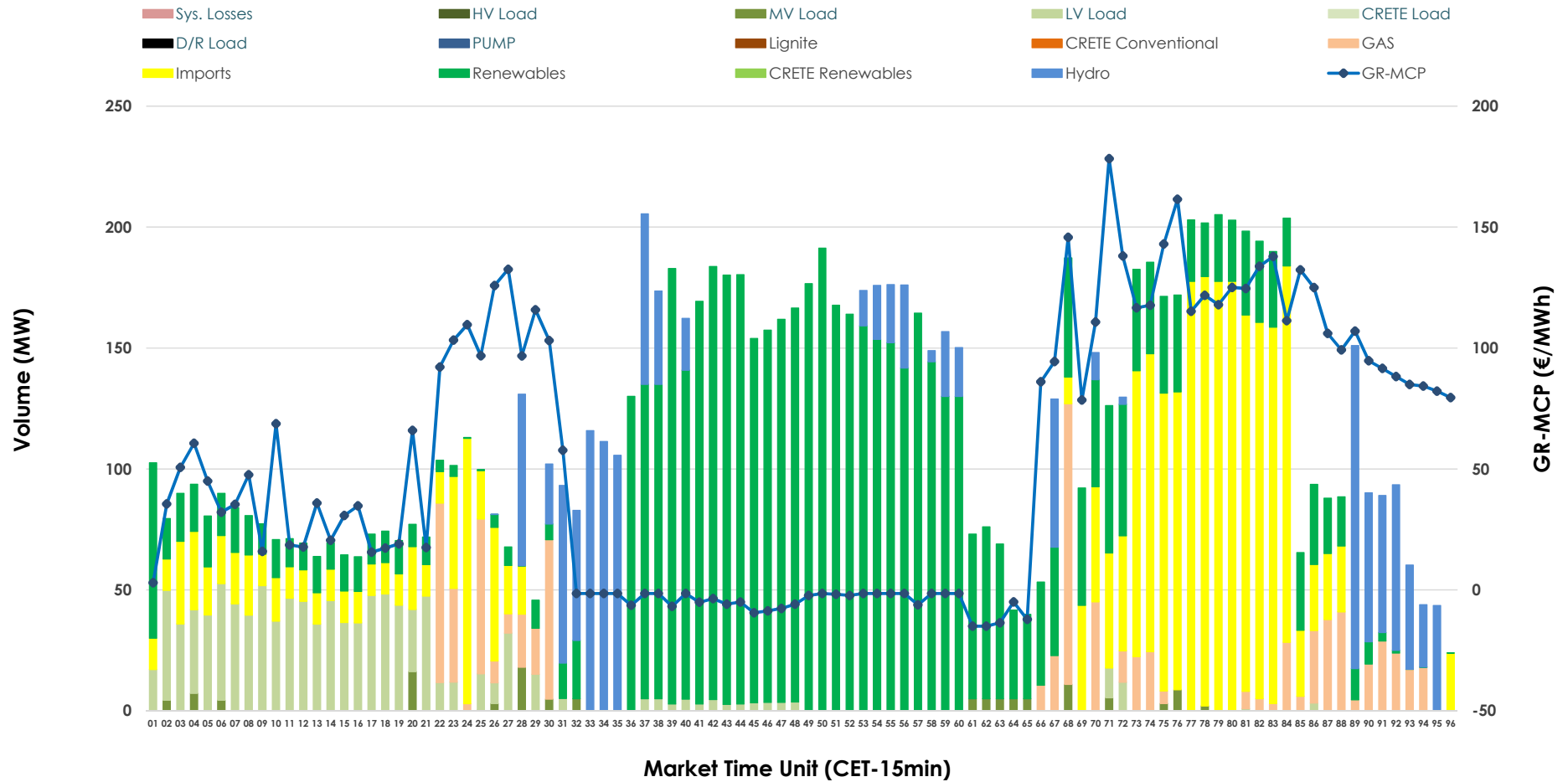




# IDA '2' Market Outlook

18.02.2026 IDA '2' Market - Sell





### GR Bidding Zone Weekly Figures

Delivery Day	12.02	13.02	14.02	15.02	16.02	17.02	18.02
	👇 -18%	👈 12%	👇 -30%	👇 -62%	👈 180%	👇 -1%	👇 -19%
<b>Avg.MCP (€/MWh)</b>	78.95	88.63	61.90	23.54	66.00	65.25	53.06
<b>Max.MCP (€/MWh)</b>	112.99	146.81	112.77	77.08	163.22	156.64	178.32
<b>Min.MCP (€/MWh)</b>	0.01	-15.43	-8.55	-24.99	-19.29	-2.18	-15.00
	👈 15%	👈 0%	👇 -36%	👇 -12%	👈 122%	👇 -43%	👈 81%
<b>Tot.Vol(GWh)</b>	4.49	4.47	2.88	2.55	5.66	3.21	5.80

### Trades by Order Type

Delivery Day		12.02	13.02	14.02	15.02	16.02	17.02	18.02	
<b>Ord Price Type</b>		<b>Sell &amp; Buy Trades in (GWh) per Price Type</b>							<b>(%)</b>
<b>PPT</b>	(S)	0.000	0.000	0.000	0.000	0.000	0.000	0.000	0.00%
<b>HBD</b>	(S)	2.213	0.882	1.145	1.209	2.542	0.935	2.201	75.87%
<b>BLK</b>	(S)	0.000	0.000	0.000	0.000	0.000	0.000	0.000	0.00%
<b>CPL</b>	(S)	0.034	1.354	0.293	0.064	0.289	0.671	0.700	24.13%
<b>PPT</b>	(B)	0.000	0.000	0.000	0.000	0.000	0.000	0.000	0.00%
<b>HBD</b>	(B)	2.160	2.197	1.369	1.073	2.077	1.374	2.373	81.79%
<b>BLK</b>	(B)	0.000	0.000	0.000	0.000	0.000	0.000	0.000	0.00%
<b>CPL</b>	(B)	0.086	0.040	0.070	0.200	0.754	0.233	0.528	18.21%
		<b>Sell &amp; Buy Orders Traded per Price Type</b>							<b>(%)</b>
<b>PPT</b>	(S)	0	0	0	0	0	0	0	0.00%
<b>HBD</b>	(S)	270	160	156	230	248	206	304	100.00%
<b>BLK</b>	(S)	0	0	0	0	0	0	0	0.00%
<b>PPT</b>	(B)	0	0	0	0	0	0	0	0.00%
<b>HBD</b>	(B)	456	614	616	366	331	394	445	100.00%
<b>BLK</b>	(B)	0	0	0	0	0	0	0	0.00%

**MCP** Market Clearing Price (€/MWh)  
**PPT** Priority Price-Taking  
**HBD** Hybrid  
**BLK** Block  
**CPL** Market Coupling Flow

### Trade's Volume Mix

	Sell - MWh	Buy - MWh	
<b>Lignite</b> (0.0%)	0	0	(0.0%)
<b>Crete Conv.</b> (0.0%)	0	0	(0.0%)
<b>Gas</b> (7.2%)	208	0	(0.0%)
<b>Hydro</b> (11.6%)	335	0	(0.0%)
<b>Imports</b> (24.1%)	700		
<b>RES</b> (47.3%)	1,372	1,497	(51.6%)
<b>Crete RES</b> (0.0%)	0	0	(0.0%)
<b>HV Load</b> (0.0%)	0	0	(0.0%)
<b>MV Load</b> (1.0%)	30	11	(0.4%)
<b>LV Load</b> (8.8%)	256	866	(29.8%)
<b>Crete Load</b> (0.0%)	0	0	(0.0%)
<b>Pumping</b> (0.0%)	0	0	(0.0%)
<b>Exports</b>		528	(18.2%)
<b>Sys.Losses</b> (0.0%)	0	0	(0.0%)
<b>D/R Load</b> (0.0%)	0	0	(0.0%)

