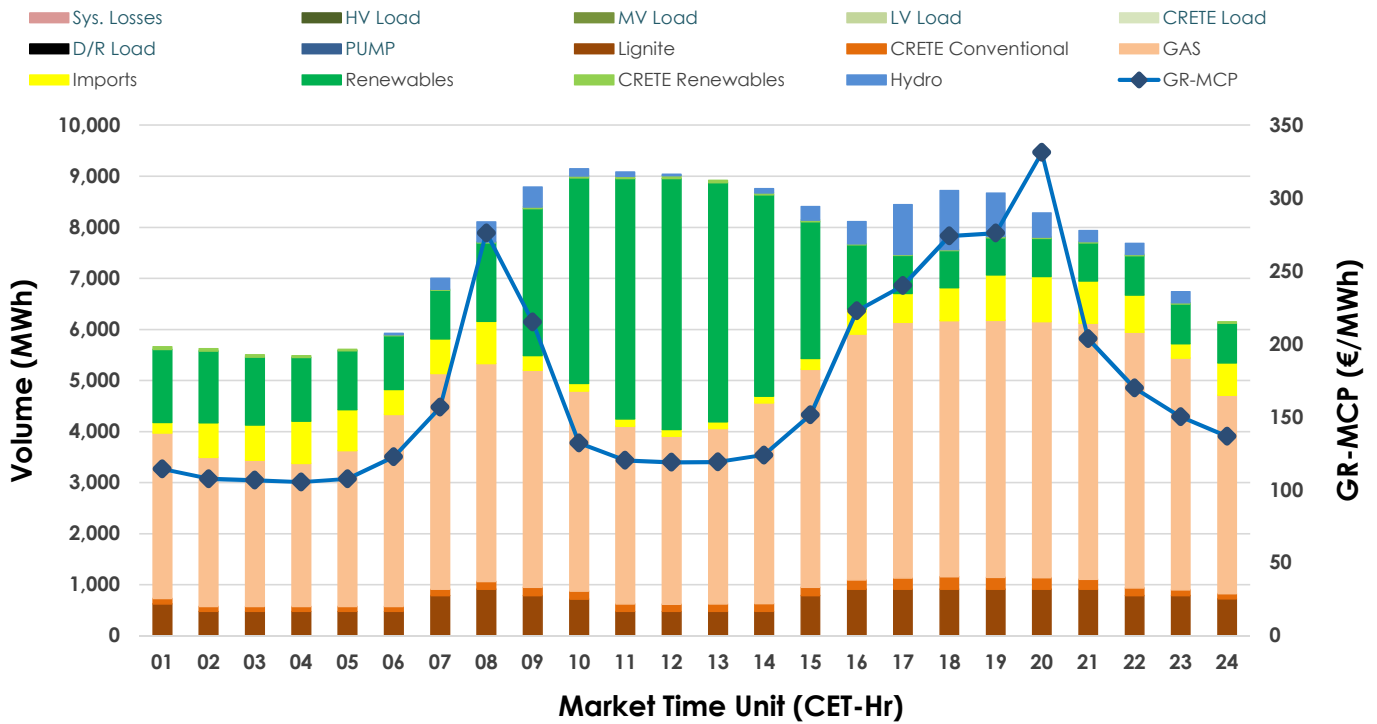
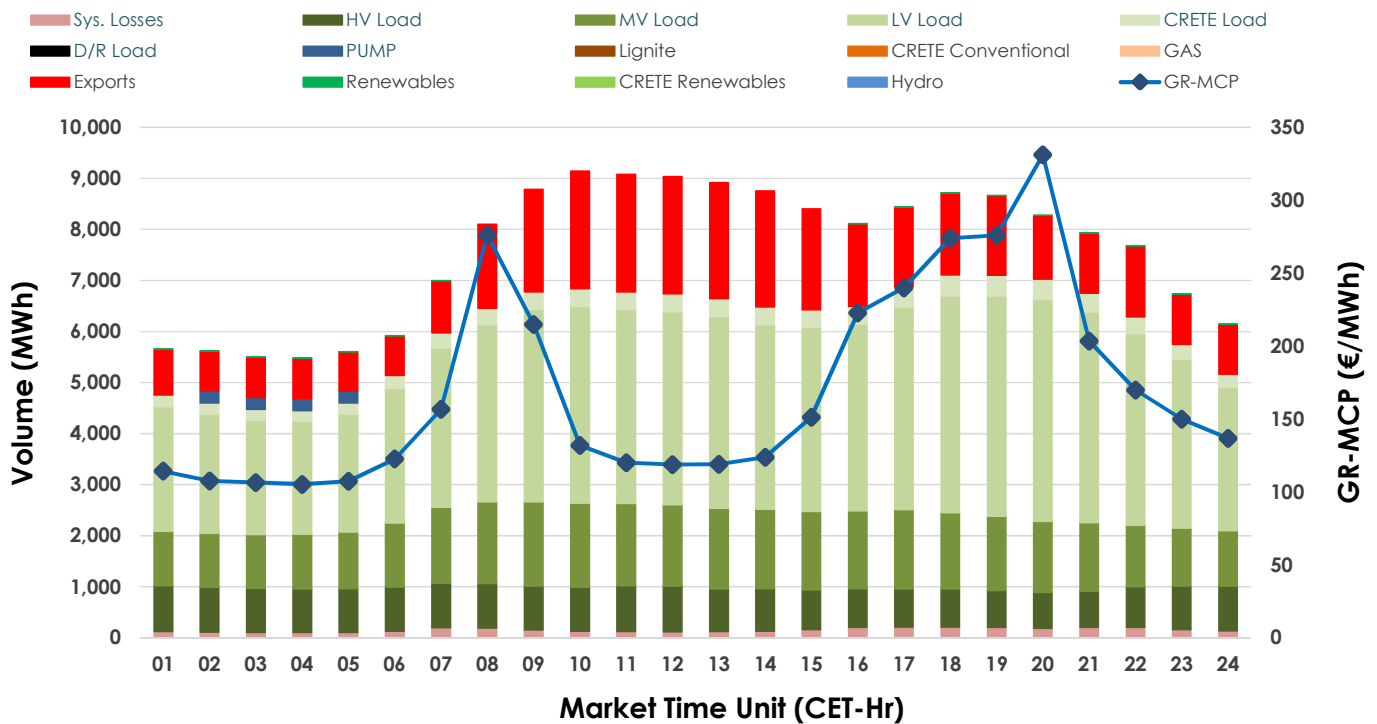


## 11.12.2024 Day-Ahead Market - Sell



## 11.12.2024 Day-Ahead Market - Buy



## GR Bidding Zone Weekly Figures

Delivery Day	05.12	06.12	07.12	08.12	09.12	10.12	11.12
	📉-4%	📉-12%	📉-11%	📉-17%	📈8%	📈21%	📈19%
Avg.MCP (€/MWh)	167.39	147.02	131.48	109.17	117.58	142.59	170.07
Max.MCP (€/MWh)	282.23	180.97	178.47	137.88	178.88	196.22	331.26
Min.MCP (€/MWh)	103.65	100.21	71.36	87.30	35.35	93.19	105.34
	📈 2%	📉 -7%	📉 -4%	📉 -6%	📈 15%	📉 -2%	📈 2%
Tot.Vol(GWh)	376.72	351.31	336.88	315.91	363.01	357.07	363.52

## Trades by Order Type

Delivery Day	05.12	06.12	07.12	08.12	09.12	10.12	11.12
Order P.T	Sell & Buy Trades in (GWh) per Price Type						
PPT (S)	56.383	48.226	56.400	64.189	71.357	61.926	53.409
HBD (S)	54.174	48.119	50.865	50.262	60.832	55.390	52.795
BLK (S)	63.761	64.068	49.569	39.460	46.039	56.363	69.057
CPL (S)	14.043	15.245	11.608	4.045	3.278	4.856	6.498
PPT (B)	16.998	15.729	14.784	13.639	15.973	16.677	16.537
HBD (B)	149.884	148.063	135.986	126.977	139.383	140.831	142.235
BLK (B)							
CPL (B)	21.479	11.866	17.672	17.340	26.150	21.028	22.987
Order P.T	Sell & Buy Orders Traded per Price Type						
PPT (S)	584	565	575	623	561	536	570
HBD (S)	875	926	878	807	738	881	888
BLK (S)	310	321	239	209	236	282	334
PPT (B)	735	695	729	739	769	762	747
HBD (B)	1330	1295	1313	1269	1417	1377	1356
BLK (B)							

<b>MCP</b>	Market Clearing Price (€/MWh)
<b>PPT</b>	Priority Price-Taking
<b>HBD</b>	Hybrid
<b>BLK</b>	Block
<b>CPL</b>	Market Coupling Flow

## Trade's Volume Mix

	Sell - MWh	Buy - MWh	
Lignite	(9.2%) 16,664	0	(0.0%)
Crete Conv.	(2.0%) 3,682	0	(0.0%)
Gas	(53.4%) 97,005	0	(0.0%)
Hydro	(3.4%) 6,119	0	(0.0%)
Imports	(6.8%) 12,357		
RES	(24.9%) 45,183	106	(0.1%)
Crete RES	(0.4%) 749	0	(0.0%)
HV Load	(0.0%) 0	19,810	(10.9%)
MV Load	(0.0%) 0	33,068	(18.2%)
LV Load	(0.0%) 0	81,416	(44.8%)
Crete Load	(0.0%) 0	7,609	(4.2%)
Pumping	(0.0%) 0	940	(0.5%)
Exports		35,056	(19.3%)
Sys.Losses	(0.0%) 0	3,754	(2.1%)
D/R Load	(0.0%) 0	0	(0.0%)

