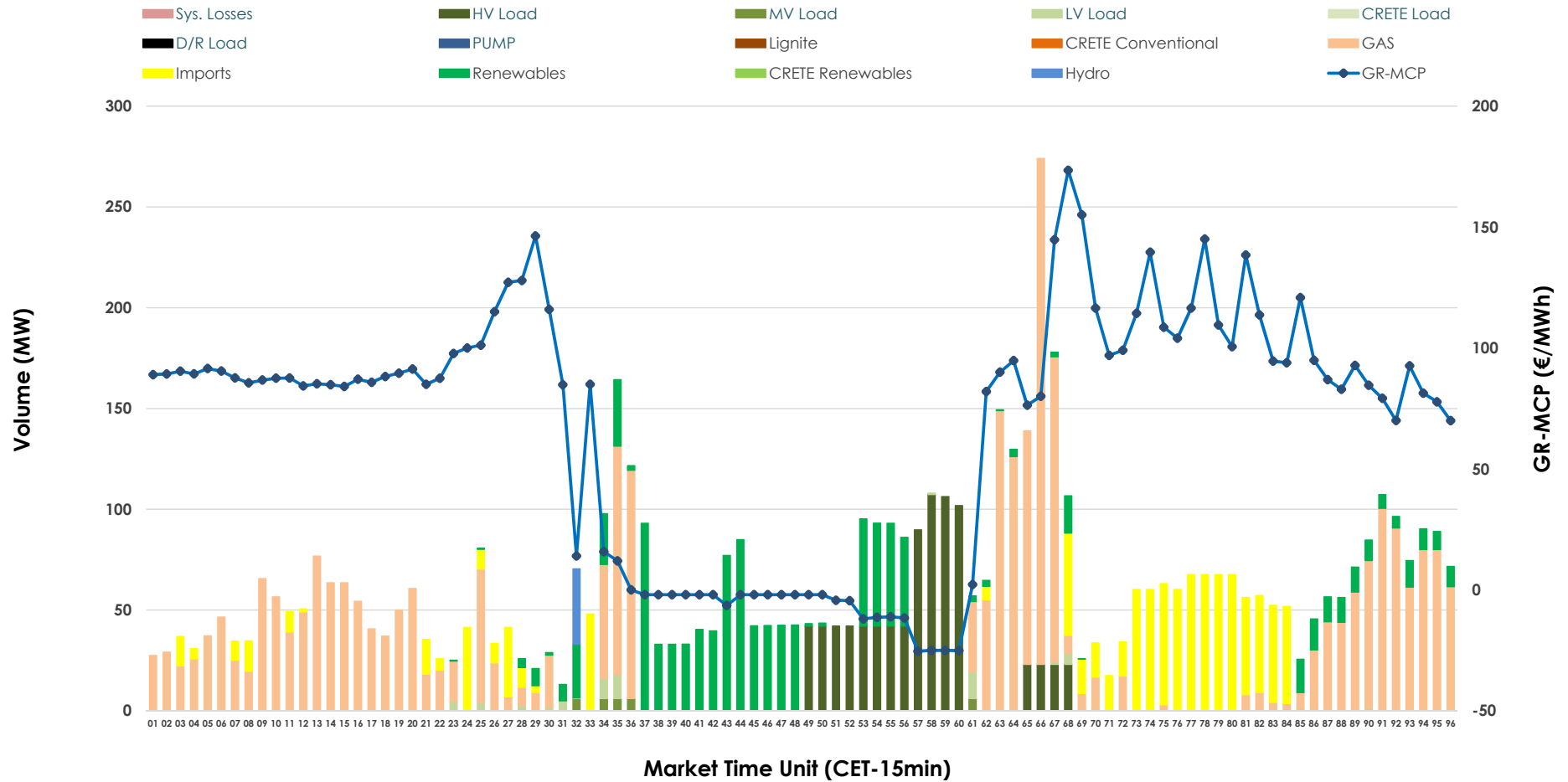


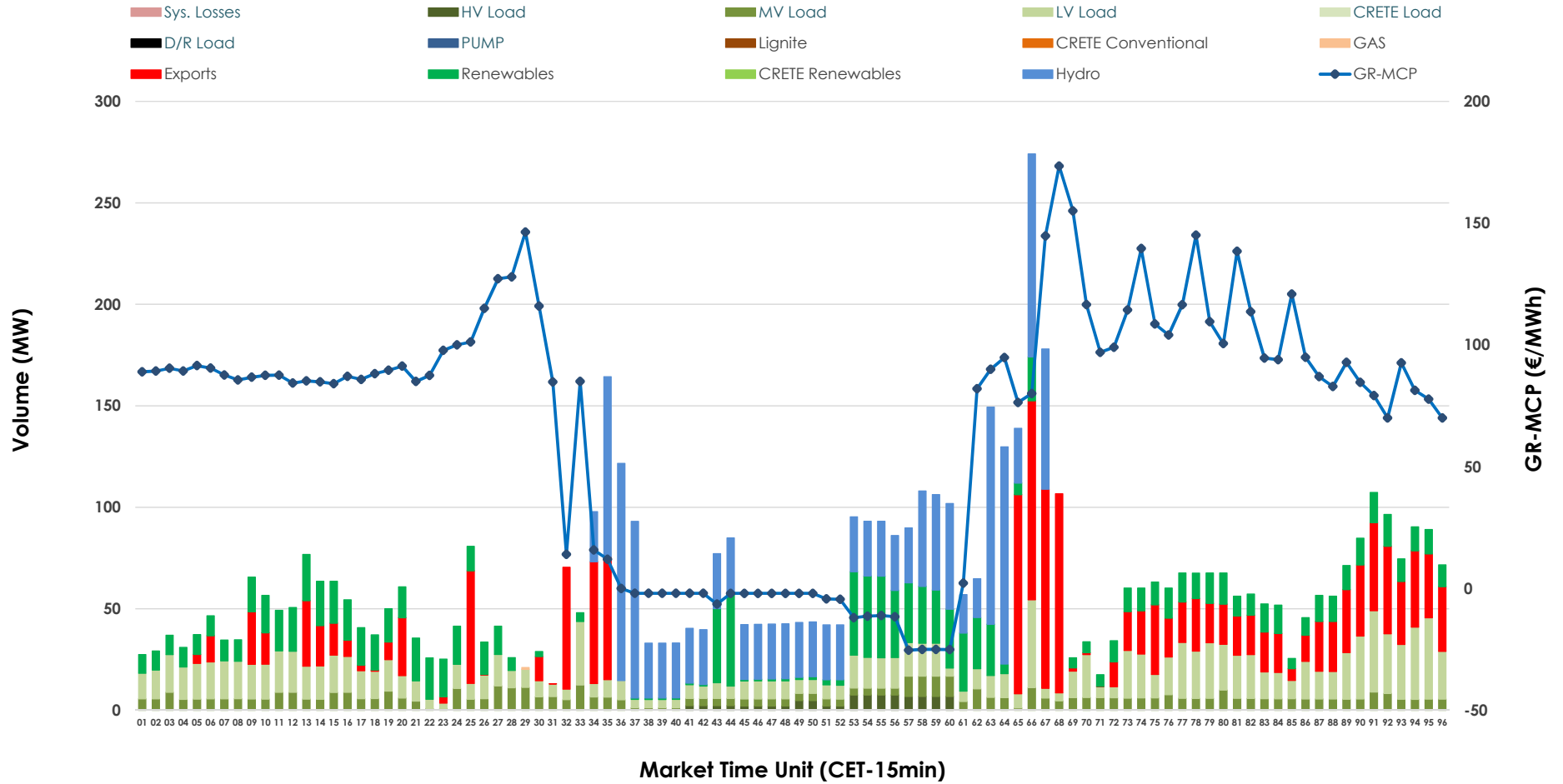


# IDA '1' Market Outlook

19.02.2026 IDA '1' Market - Sell



### 19.02.2026 IDA '1' Market - Buy



### GR Bidding Zone Weekly Figures

Delivery Day	13.02	14.02	15.02	16.02	17.02	18.02	19.02
	↗ 11%	↘ -27%	↘ -60%	↗ 155%	↘ -12%	↘ -20%	↗ 44%
<b>Avg.MCP (€/MWh)</b>	90.59	65.92	26.32	67.20	58.93	47.19	67.79
<b>Max.MCP (€/MWh)</b>	145.19	117.14	95.58	158.98	158.86	172.62	173.45
<b>Min.MCP (€/MWh)</b>	3.01	-3.80	-5.00	-18.37	-11.05	-21.98	-25.34
	↗ 28%	↗ 121%	↘ -43%	↗ 40%	↗ 20%	↘ -51%	↘ -4%
<b>Tot.Vol(GWh)</b>	3.08	6.81	3.90	5.47	6.57	3.22	3.09

### Trades by Order Type

Delivery Day		13.02	14.02	15.02	16.02	17.02	18.02	19.02	
<b>Ord Price Type</b>		Sell & Buy Trades in (GWh) per Price Type							(%)
<b>PPT</b>	(S)	0.000	0.000	0.000	0.000	0.000	0.000	0.000	0.00%
<b>HBD</b>	(S)	1.287	3.373	1.951	2.634	3.176	1.505	1.278	82.76%
<b>BLK</b>	(S)	0.000	0.000	0.000	0.000	0.000	0.000	0.000	0.00%
<b>CPL</b>	(S)	0.251	0.030	0.000	0.100	0.110	0.104	0.266	17.24%
<b>PPT</b>	(B)	0.000	0.000	0.000	0.000	0.000	0.000	0.000	0.00%
<b>HBD</b>	(B)	1.246	2.776	1.797	2.555	1.507	1.359	1.184	76.66%
<b>BLK</b>	(B)	0.000	0.000	0.000	0.000	0.000	0.000	0.000	0.00%
<b>CPL</b>	(B)	0.292	0.627	0.155	0.178	1.779	0.250	0.361	23.34%
		Sell & Buy Orders Traded per Price Type							(%)
<b>PPT</b>	(S)	0	0	0	0	0	0	0	0.00%
<b>HBD</b>	(S)	183	346	337	110	296	196	71	100.00%
<b>BLK</b>	(S)	0	0	0	0	0	0	0	0.00%
<b>PPT</b>	(B)	0	0	0	0	0	0	0	0.00%
<b>HBD</b>	(B)	706	576	420	786	537	670	734	100.00%
<b>BLK</b>	(B)	0	0	0	0	0	0	0	0.00%

**MCP** Market Clearing Price (€/MWh)  
**PPT** Priority Price-Taking  
**HBD** Hybrid  
**BLK** Block  
**CPL** Market Coupling Flow

### Trade's Volume Mix

	Sell - MWh	Buy - MWh	
<b>Lignite</b> (0.0%)	0	0	(0.0%)
<b>Crete Conv.</b> (0.0%)	0	0	(0.0%)
<b>Gas</b> (49.6%)	766	0	(0.0%)
<b>Hydro</b> (0.6%)	9	360	(23.3%)
<b>Imports</b> (17.2%)	266		
<b>RES</b> (17.5%)	270	309	(20.0%)
<b>Crete RES</b> (0.0%)	0	0	(0.0%)
<b>HV Load</b> (13.5%)	208	22	(1.4%)
<b>MV Load</b> (0.5%)	8	142	(9.2%)
<b>LV Load</b> (1.1%)	17	350	(22.7%)
<b>Crete Load</b> (0.0%)	0	0	(0.0%)
<b>Pumping</b> (0.0%)	0	0	(0.0%)
<b>Exports</b>		361	(23.3%)
<b>Sys.Losses</b> (0.0%)	0	0	(0.0%)
<b>D/R Load</b> (0.0%)	0	0	(0.0%)

