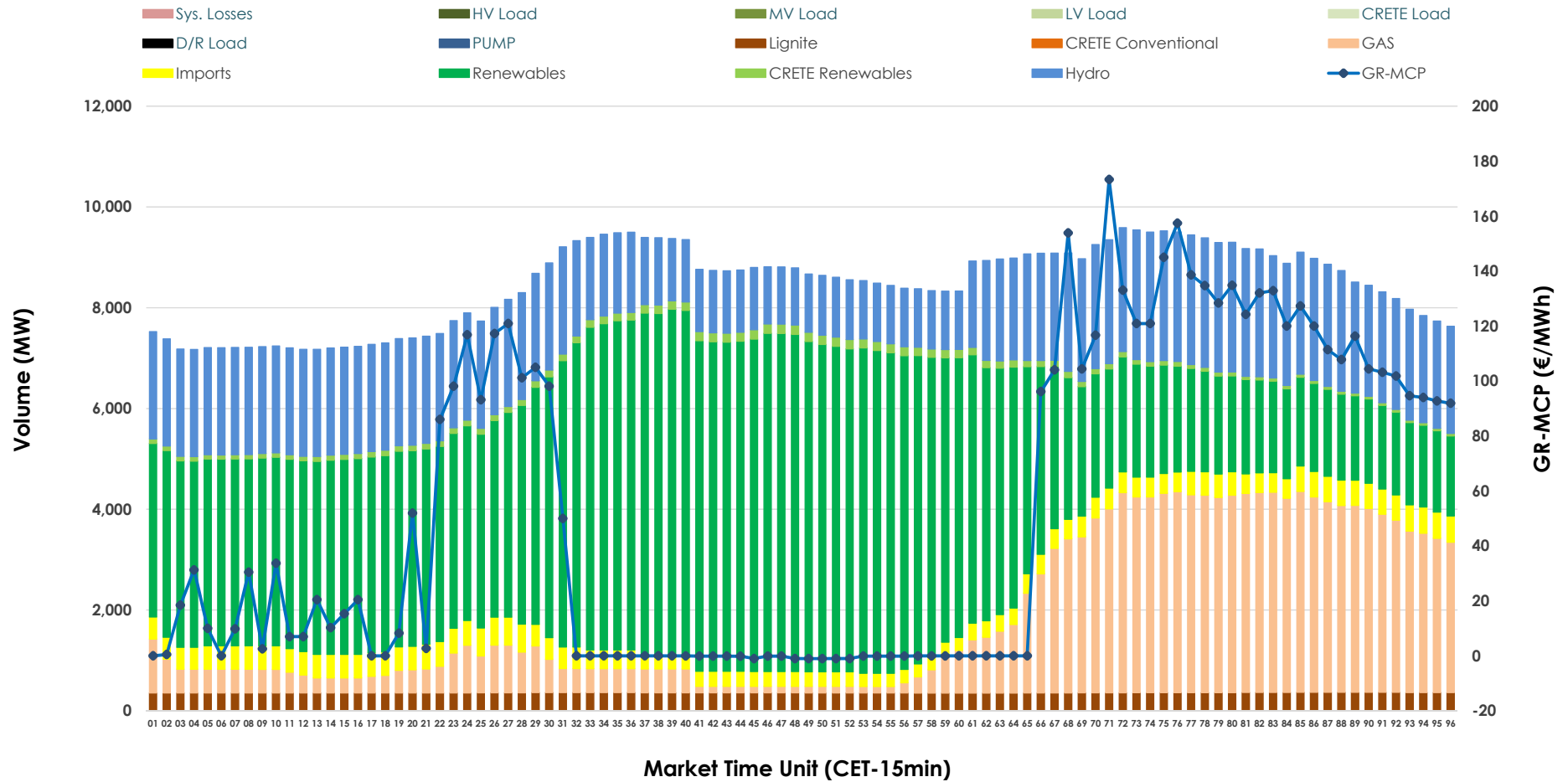


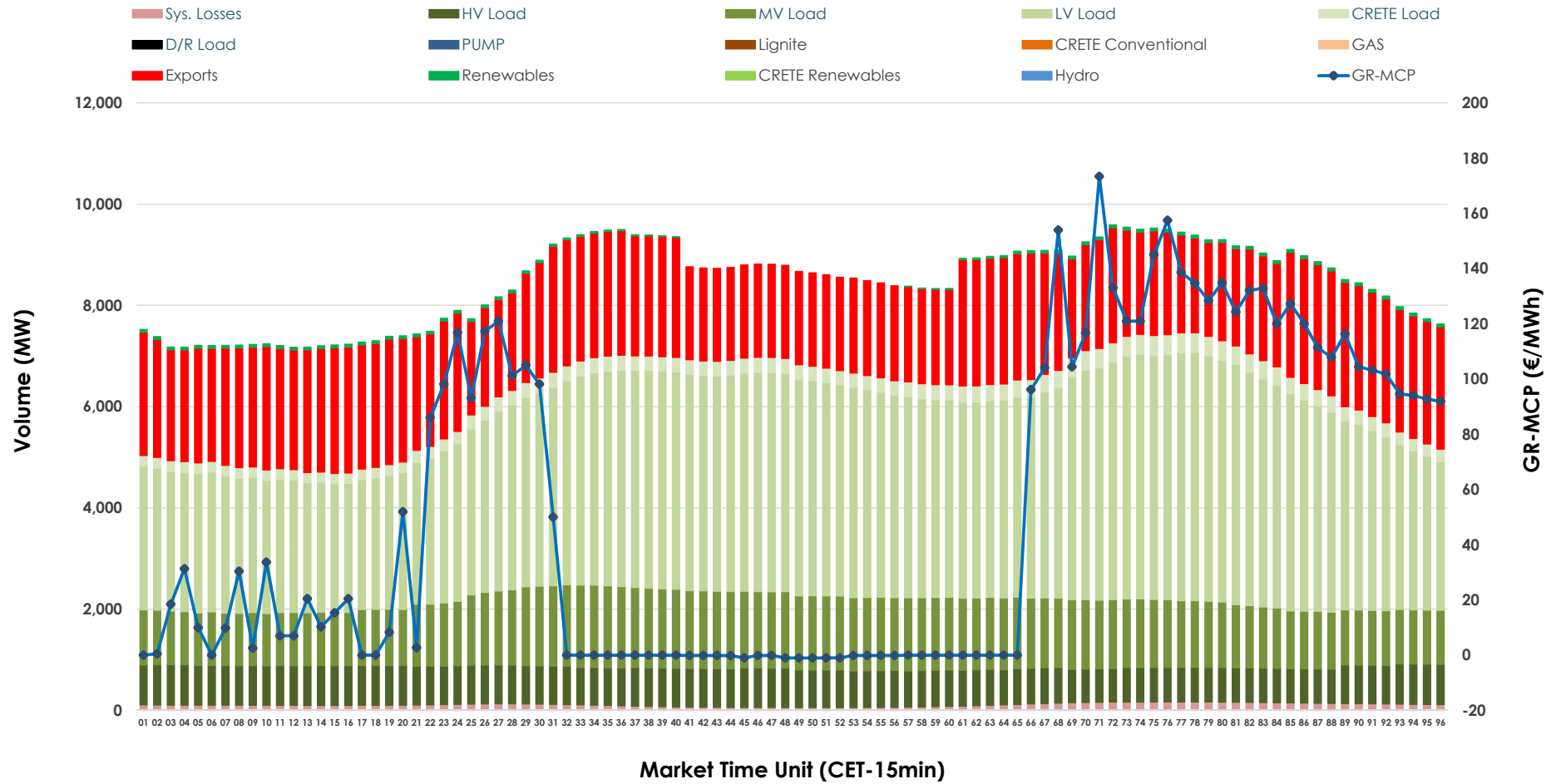


# Day-Ahead Market Outlook

18.02.2026 Day-Ahead Market - Sell



### 18.02.2026 Day-Ahead Market - Buy



### GR Bidding Zone Weekly Figures

Delivery Day	12.02	13.02	14.02	15.02	16.02	17.02	18.02
	👇 -19%	👆 9%	👇 -28%	👇 -59%	👆 166%	👇 -20%	👇 -10%
<b>Avg.MCP (€/MWh)</b>	83.74	91.43	65.70	27.10	71.96	57.80	52.05
<b>Max.MCP (€/MWh)</b>	113.10	141.81	116.13	96.30	163.98	152.38	173.32
<b>Min.MCP (€/MWh)</b>	0.01	0.01	0.01	-0.10	0.00	0.00	-1.01
	👆 3%	👇 -4%	👇 -4%	👇 -10%	👆 7%	👆 9%	👉 0%
<b>Tot.Vol(GWh)</b>	420.46	404.98	386.76	348.20	372.50	405.83	406.30

### Trades by Order Type

Delivery Day		12.02	13.02	14.02	15.02	16.02	17.02	18.02	
<b>Ord Price Type</b>		<b>Sell &amp; Buy Trades in (GWh) per Price Type</b>							<b>(%)</b>
<b>PPT</b>	(S)	115.484	104.129	102.419	106.090	101.437	116.187	116.225	57.21%
<b>HBD</b>	(S)	72.762	68.013	69.070	60.657	65.090	67.805	66.379	32.68%
<b>BLK</b>	(S)	21.985	28.714	21.890	7.351	19.722	14.780	20.466	10.07%
<b>CPL</b>	(S)	0.000	1.634	0.000	0.000	0.000	4.142	0.078	0.04%
<b>PPT</b>	(B)	13.165	13.224	12.407	13.254	14.176	12.318	13.438	6.61%
<b>HBD</b>	(B)	150.839	146.580	137.891	127.444	137.125	153.387	151.624	74.64%
<b>BLK</b>	(B)	0.000	0.000	0.000	0.000	0.000	0.000	0.000	0.00%
<b>CPL</b>	(B)	46.227	42.686	43.080	33.399	34.948	37.209	38.086	18.75%
		<b>Sell &amp; Buy Orders Traded per Price Type</b>							<b>(%)</b>
<b>PPT</b>	(S)	2454	2309	2270	2169	2324	2508	2477	50.78%
<b>HBD</b>	(S)	2701	2811	2763	2249	2572	2512	2390	49.00%
<b>BLK</b>	(S)	13	11	9	3	10	6	11	0.23%
<b>PPT</b>	(B)	2237	2231	2341	2367	2366	2323	2393	35.66%
<b>HBD</b>	(B)	4097	4012	4210	4372	4040	4233	4317	64.34%
<b>BLK</b>	(B)	0	0	0	0	0	0	0	0.00%

**MCP** Market Clearing Price (€/MWh)  
**PPT** Priority Price-Taking  
**HBD** Hybrid  
**BLK** Block  
**CPL** Market Coupling Flow

### Trade's Volume Mix

		Sell - MWh	Buy - MWh	
<b>Lignite</b>	(4.2%)	8,567	0	(0.0%)
<b>Crete Conv.</b>	(0.0%)	0	0	(0.0%)
<b>Gas</b>	(17.8%)	36,129	0	(0.0%)
<b>Hydro</b>	(23.0%)	46,680	0	(0.0%)
<b>Imports</b>	(4.8%)	9,733		
<b>RES</b>	(48.8%)	99,233	941	(0.5%)
<b>Crete RES</b>	(1.4%)	2,806	0	(0.0%)
<b>HV Load</b>	(0.0%)	0	17,803	(8.8%)
<b>MV Load</b>	(0.0%)	0	31,506	(15.5%)
<b>LV Load</b>	(0.0%)	0	90,447	(44.5%)
<b>Crete Load</b>	(0.0%)	0	6,951	(3.4%)
<b>Pumping</b>	(0.0%)	0	0	(0.0%)
<b>Exports</b>			52,870	(26.0%)
<b>Sys.Losses</b>	(0.0%)	0	2,631	(1.3%)
<b>D/R Load</b>	(0.0%)	0	0	(0.0%)

