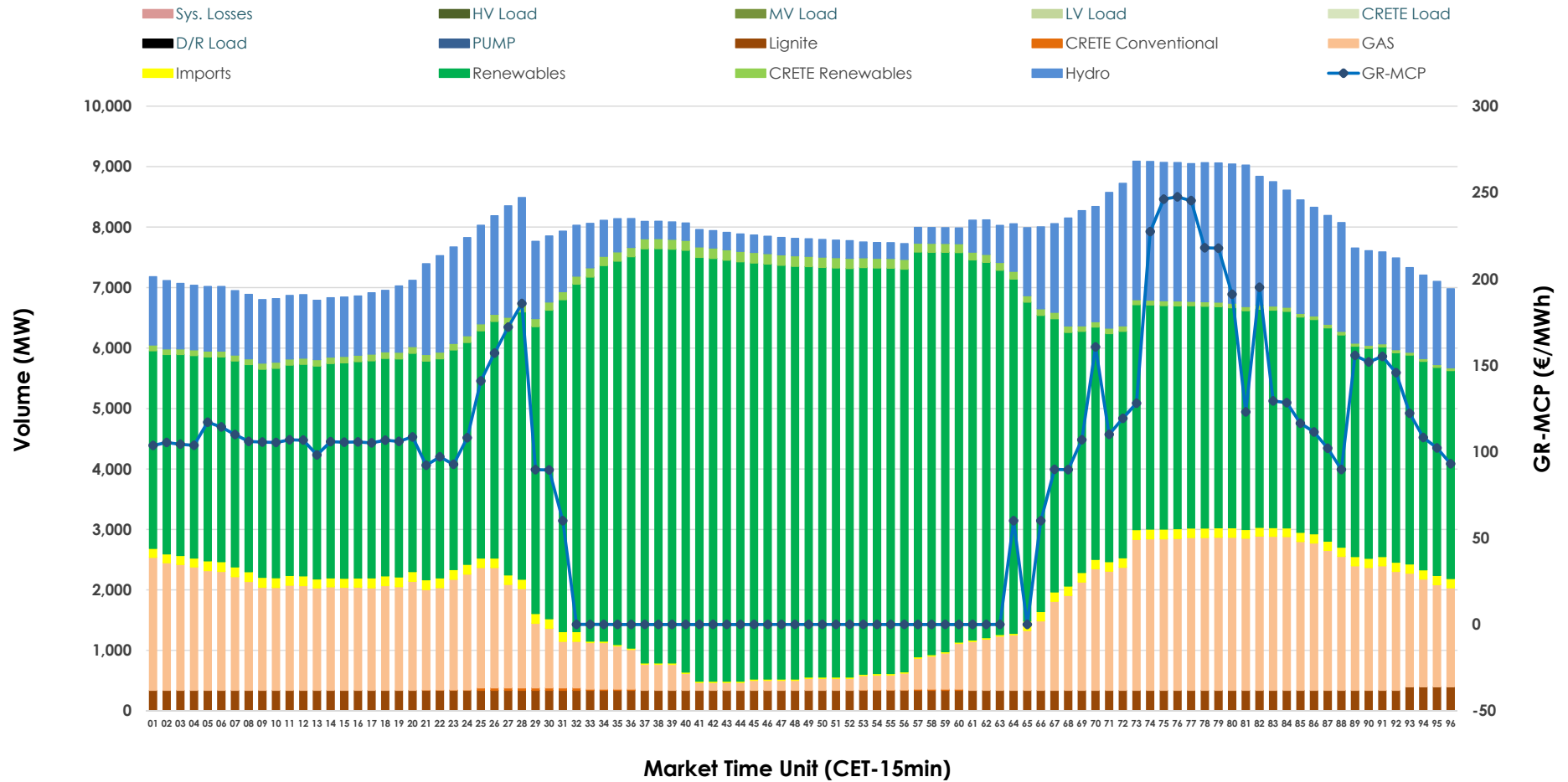


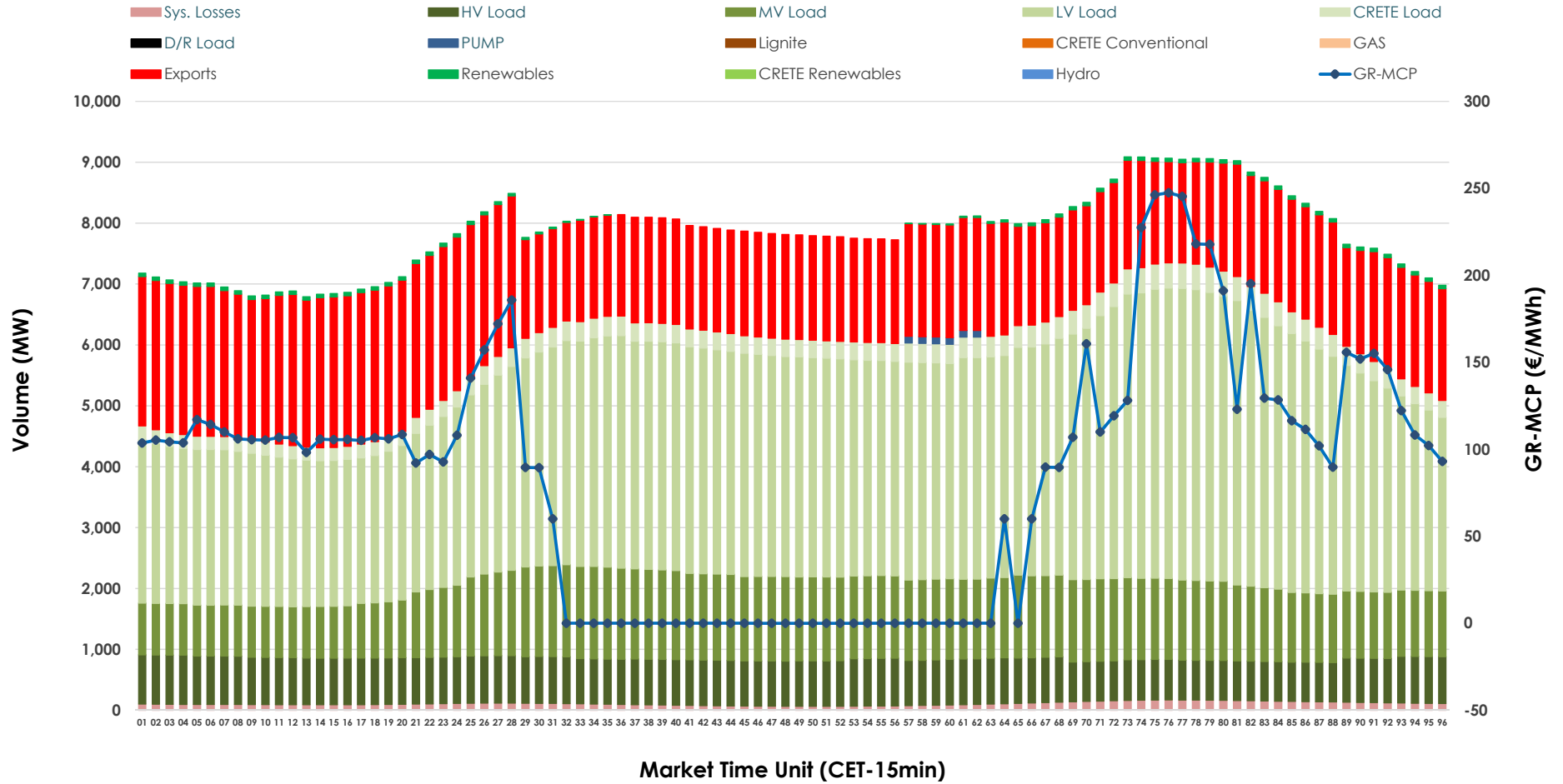


# Day-Ahead Market Outlook

09.03.2026 Day-Ahead Market - Sell



### 09.03.2026 Day-Ahead Market - Buy



### GR Bidding Zone Weekly Figures

Delivery Day	03.03	04.03	05.03	06.03	07.03	08.03	09.03
	↗ 32%	↘ -4%	↗ 3%	↘ -17%	↘ -4%	↘ -2%	↗ 1%
<b>Avg.MCP (€/MWh)</b>	105.79	102.04	105.57	87.16	83.96	82.31	82.94
<b>Max.MCP (€/MWh)</b>	224.94	261.83	217.72	203.10	168.31	172.04	247.48
<b>Min.MCP (€/MWh)</b>	9.90	0.01	0.79	0.00	-3.65	-1.83	-0.01
	↗ 3%	↗ 2%	↘ -2%	↘ -4%	↘ -2%	↘ -5%	↗ 7%
<b>Tot.Vol(GWh)</b>	391.40	400.49	393.19	375.71	368.18	351.54	377.07

### Trades by Order Type

Delivery Day		03.03	04.03	05.03	06.03	07.03	08.03	09.03	
<b>Ord Price Type</b>		<b>Sell &amp; Buy Trades in (GWh) per Price Type</b>							<b>(%)</b>
<b>PPT</b>	(S)	93.316	92.023	84.357	88.406	94.504	93.458	103.168	54.72%
<b>HBD</b>	(S)	66.501	72.545	68.571	70.555	63.366	60.465	72.209	38.30%
<b>BLK</b>	(S)	33.700	35.572	43.620	28.667	25.786	21.848	13.159	6.98%
<b>CPL</b>	(S)	2.182	0.106	0.050	0.226	0.435	0.000	0.000	0.00%
<b>PPT</b>	(B)	12.979	12.356	12.083	13.638	12.736	12.023	13.216	7.01%
<b>HBD</b>	(B)	144.065	145.411	144.972	144.877	133.811	126.370	140.244	74.39%
<b>BLK</b>	(B)	0.000	0.000	0.000	0.000	0.000	0.000	0.000	0.00%
<b>CPL</b>	(B)	38.654	42.479	39.542	29.338	37.545	37.378	35.075	18.60%
		<b>Sell &amp; Buy Orders Traded per Price Type</b>							<b>(%)</b>
<b>PPT</b>	(S)	2284	2119	1990	2001	2063	2035	2104	45.09%
<b>HBD</b>	(S)	2973	2968	3040	2910	2647	2482	2558	54.82%
<b>BLK</b>	(S)	13	13	15	13	12	11	4	0.09%
<b>PPT</b>	(B)	2194	2196	2224	2268	2377	2257	2354	37.04%
<b>HBD</b>	(B)	3908	3999	4023	4030	3907	3760	4001	62.96%
<b>BLK</b>	(B)	0	0	0	0	0	0	0	0.00%

**MCP** Market Clearing Price (€/MWh)  
**PPT** Priority Price-Taking  
**HBD** Hybrid  
**BLK** Block  
**CPL** Market Coupling Flow

### Trade's Volume Mix

		Sell - MWh	Buy - MWh	
<b>Lignite</b>	(4.4%)	8,217	0	(0.0%)
<b>Crete Conv.</b>	(0.1%)	123	0	(0.0%)
<b>Gas</b>	(18.0%)	33,953	0	(0.0%)
<b>Hydro</b>	(14.6%)	27,438	0	(0.0%)
<b>Imports</b>	(1.4%)	2,684		
<b>RES</b>	(60.1%)	113,400	873	(0.5%)
<b>Crete RES</b>	(1.4%)	2,721	0	(0.0%)
<b>HV Load</b>	(0.0%)	0	17,745	(9.4%)
<b>MV Load</b>	(0.0%)	0	29,311	(15.5%)
<b>LV Load</b>	(0.0%)	0	83,747	(44.4%)
<b>Crete Load</b>	(0.0%)	0	7,359	(3.9%)
<b>Pumping</b>	(0.0%)	0	165	(0.1%)
<b>Exports</b>			46,748	(24.8%)
<b>Sys.Losses</b>	(0.0%)	0	2,589	(1.4%)
<b>D/R Load</b>	(0.0%)	0	0	(0.0%)

