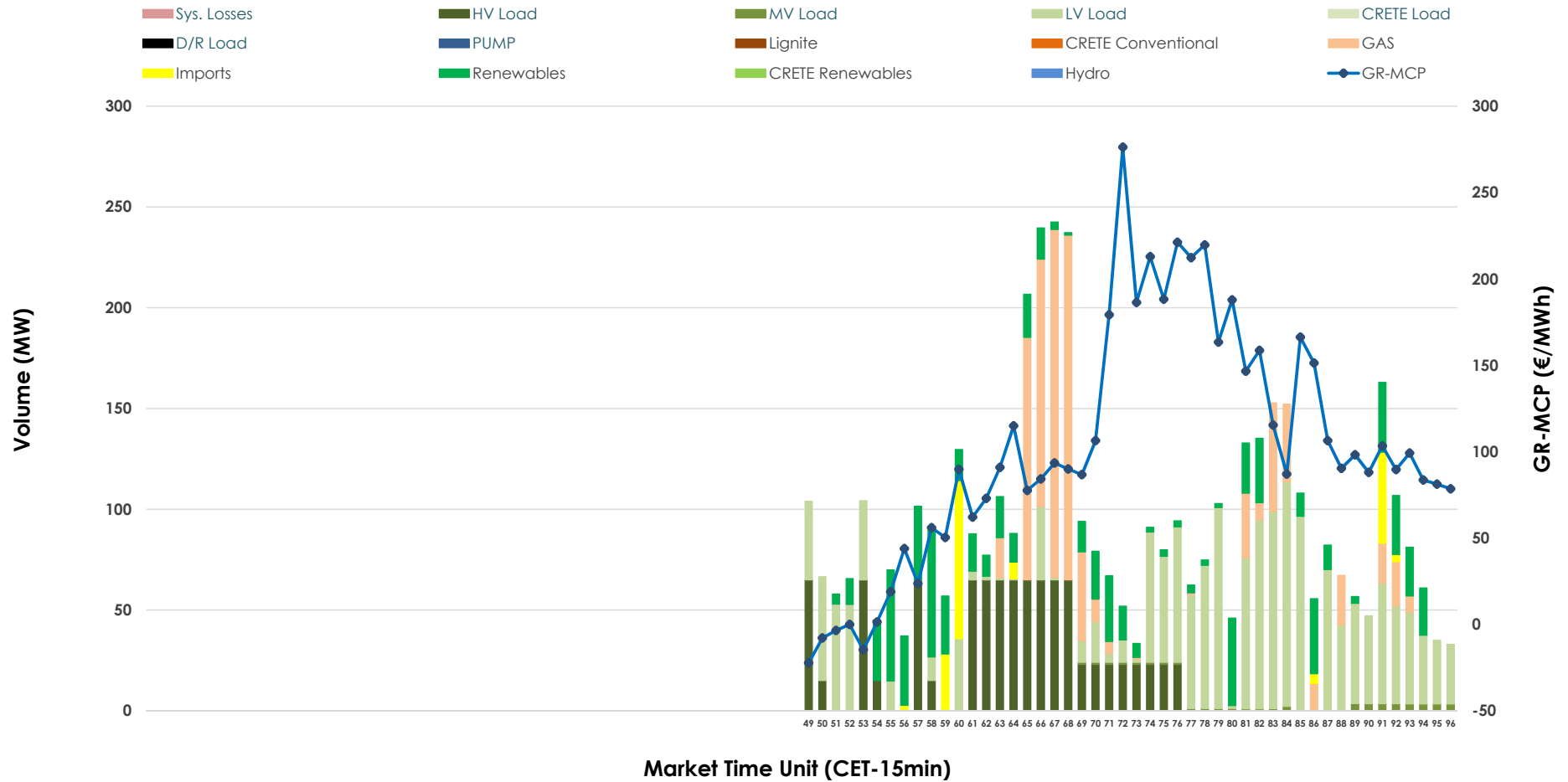


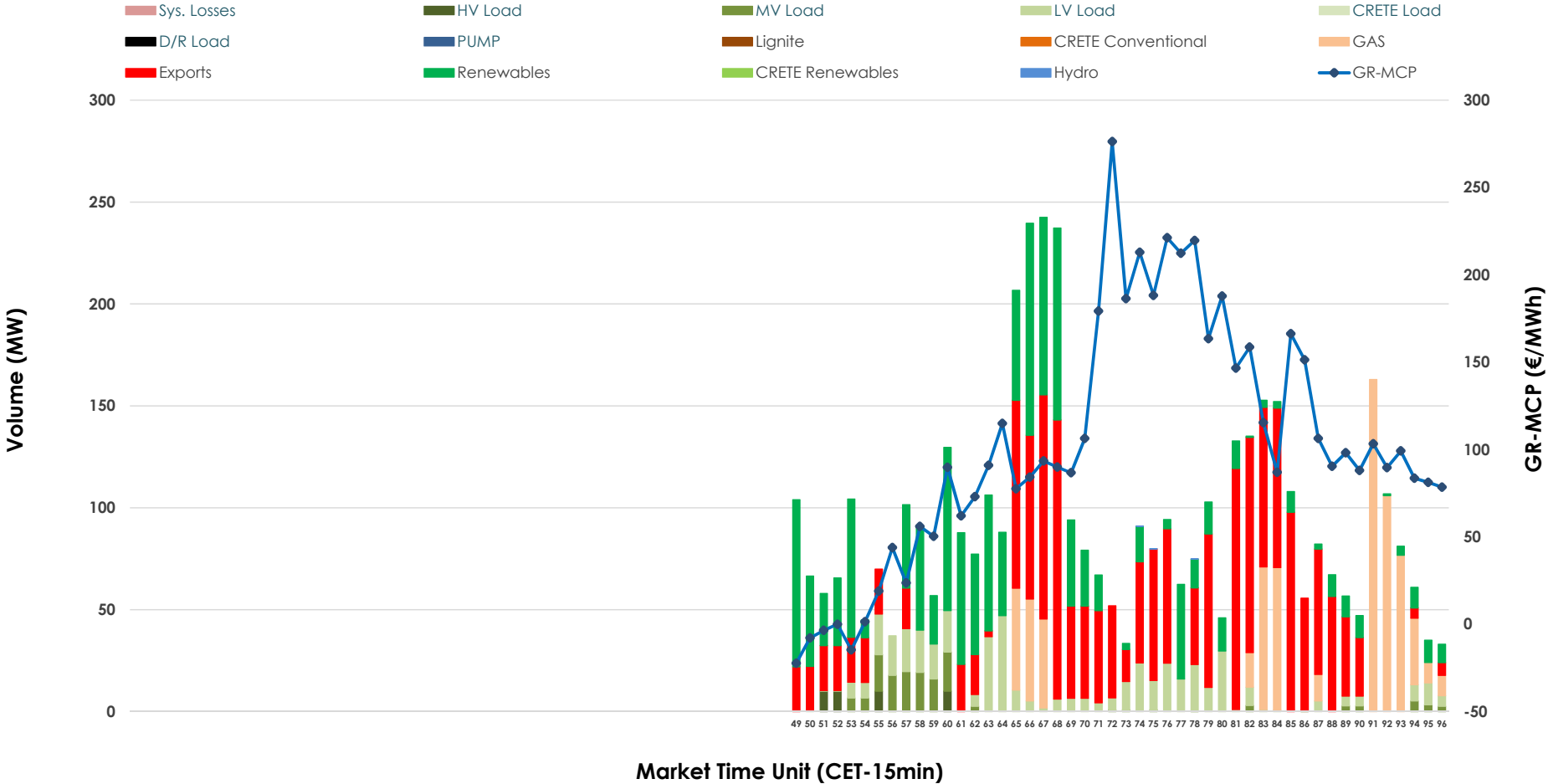


IDA '3' Market Outlook

02.03.2026 IDA '3' Market - Sell



02.03.2026 IDA '3' Market - Buy



GR Bidding Zone Weekly Figures

Delivery Day	24.02	25.02	26.02	27.02	28.02	01.03	02.03
	↗ 1%	↘ -1%	↘ -19%	↗ 33%	↘ -33%	↗ 10%	↗ 80%
Avg.MCP (€/MWh)	72.70	72.18	58.21	77.64	51.69	56.79	102.22
Max.MCP (€/MWh)	133.89	148.00	131.89	150.11	111.95	120.24	276.27
Min.MCP (€/MWh)	-3.93	-11.92	-18.94	-4.19	-14.76	-35.00	-22.29
	↗ 34%	↘ -3%	↗ 0%	↗ 20%	↘ 0%	↘ -10%	↗ 12%
Tot.Vol(GWh)	1.96	1.90	1.90	2.29	2.28	2.04	2.28

Trades by Order Type

Delivery Day		24.02	25.02	26.02	27.02	28.02	01.03	02.03	
Ord Price Type		Sell & Buy Trades in (GWh) per Price Type							(%)
PPT	(S)	0.000	0.000	0.000	0.000	0.000	0.000	0.000	0.00%
HBD	(S)	0.961	0.910	0.839	0.596	1.010	0.842	1.097	96.26%
BLK	(S)	0.000	0.000	0.000	0.000	0.000	0.000	0.000	0.00%
CPL	(S)	0.018	0.039	0.110	0.548	0.128	0.178	0.043	3.74%
PPT	(B)	0.000	0.000	0.000	0.000	0.000	0.000	0.000	0.00%
HBD	(B)	0.469	0.452	0.932	1.050	0.878	0.952	0.675	59.23%
BLK	(B)	0.000	0.000	0.000	0.000	0.000	0.000	0.000	0.00%
CPL	(B)	0.509	0.497	0.018	0.094	0.260	0.067	0.465	40.77%
		Sell & Buy Orders Traded per Price Type							(%)
PPT	(S)	0	0	0	0	0	0	0	0.00%
HBD	(S)	163	149	82	123	177	229	186	100.00%
BLK	(S)	0	0	0	0	0	0	0	0.00%
PPT	(B)	0	0	0	0	0	0	0	0.00%
HBD	(B)	236	136	226	315	216	129	175	100.00%
BLK	(B)	0	0	0	0	0	0	0	0.00%

- MCP** Market Clearing Price (€/MWh)
- PPT** Priority Price-Taking
- HBD** Hybrid
- BLK** Block
- CPL** Market Coupling Flow

Trade's Volume Mix

		Sell - MWh	Buy - MWh	
Lignite	(0.0%)	0	0	(0.0%)
Crete Conv.	(0.0%)	0	0	(0.0%)
Gas	(19.5%)	223	178	(15.6%)
Hydro	(0.0%)	0	0	(0.0%)
Imports	(3.7%)	43		
RES	(17.0%)	194	330	(29.0%)
Crete RES	(0.0%)	0	0	(0.0%)
HV Load	(20.7%)	236	10	(0.9%)
MV Load	(1.0%)	12	37	(3.2%)
LV Load	(38.0%)	434	120	(10.5%)
Crete Load	(0.0%)	0	0	(0.0%)
Pumping	(0.0%)	0	0	(0.0%)
Exports			465	(40.8%)
Sys.Losses	(0.0%)	0	0	(0.0%)
D/R Load	(0.0%)	0	0	(0.0%)

