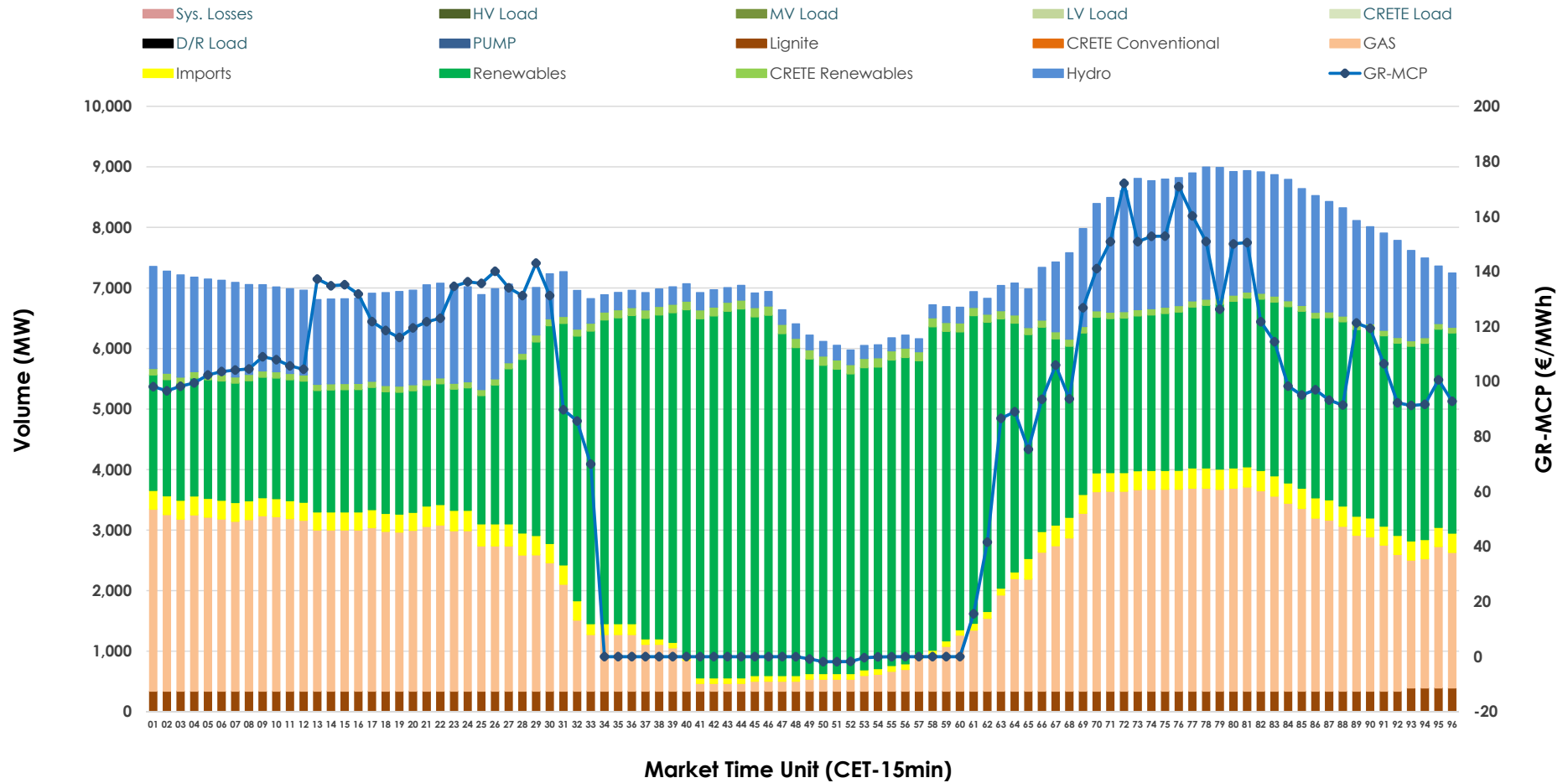


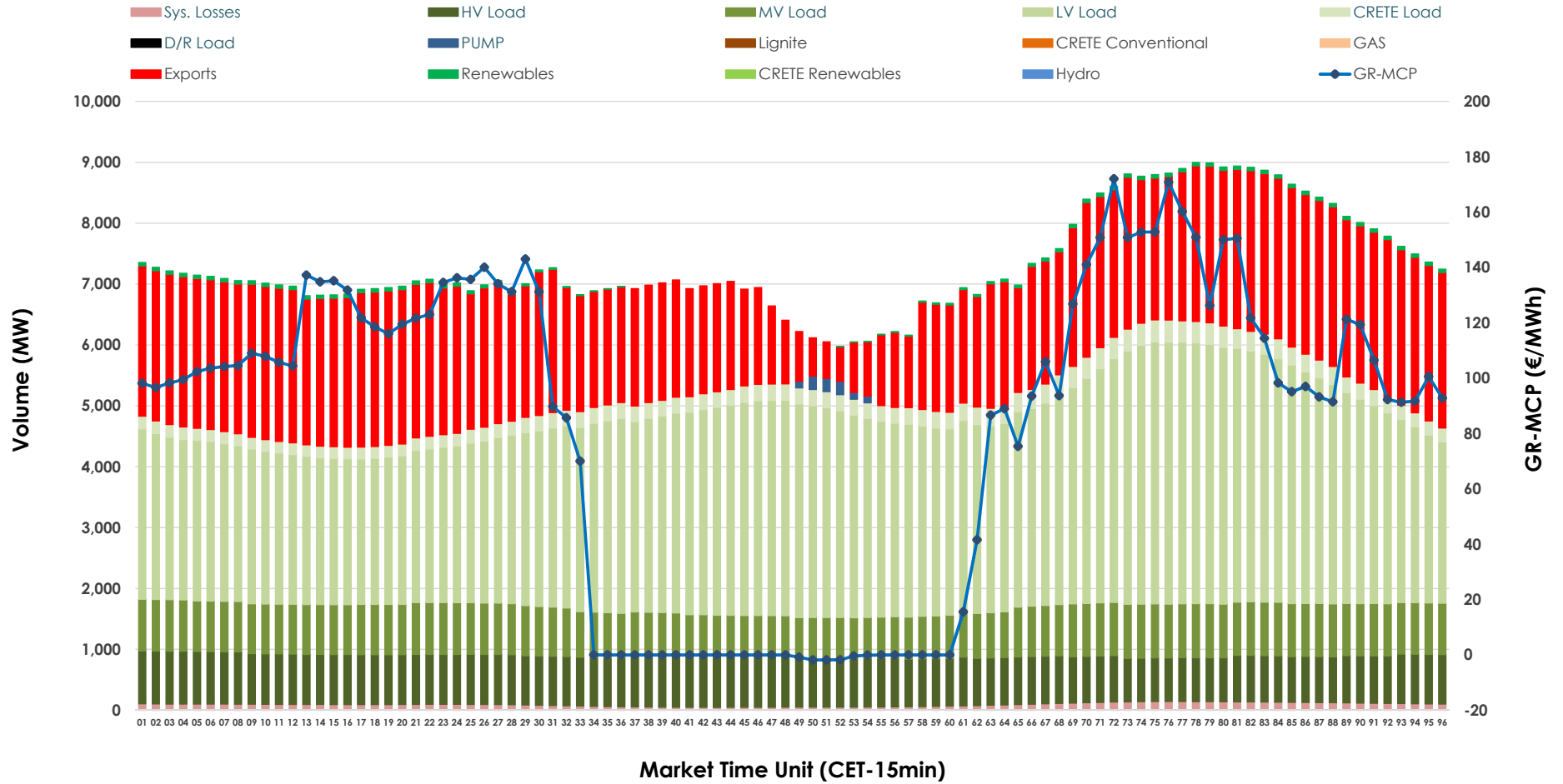


Day-Ahead Market Outlook

08.03.2026 Day-Ahead Market - Sell



08.03.2026 Day-Ahead Market - Buy



GR Bidding Zone Weekly Figures

Delivery Day	02.03	03.03	04.03	05.03	06.03	07.03	08.03
	↑ 100%	↔ 32%	↓ -4%	↔ 3%	↓ -17%	↓ -4%	↓ -2%
Avg.MCP (€/MWh)	80.04	105.79	102.04	105.57	87.16	83.96	82.31
Max.MCP (€/MWh)	205.76	224.94	261.83	217.72	203.10	168.31	172.04
Min.MCP (€/MWh)	0.00	9.90	0.01	0.79	0.00	-3.65	-1.83
	↔ 3%	↔ 3%	↔ 2%	↓ -2%	↓ -4%	↓ -2%	↓ -5%
Tot.Vol(GWh)	381.72	391.40	400.49	393.19	375.71	368.18	351.54

Trades by Order Type

Delivery Day	02.03	03.03	04.03	05.03	06.03	07.03	08.03	
Ord Price Type	Sell & Buy Trades in (GWh) per Price Type							(%)
PPT (S)	97.023	93.316	92.023	84.357	88.406	94.504	93.458	53.17%
HBD (S)	64.656	66.501	72.545	68.571	70.555	63.366	60.465	34.40%
BLK (S)	27.861	33.700	35.572	43.620	28.667	25.786	21.848	12.43%
CPL (S)	1.320	2.182	0.106	0.050	0.226	0.435	0.000	0.00%
PPT (B)	12.663	12.979	12.356	12.083	13.638	12.736	12.023	6.84%
HBD (B)	144.885	144.065	145.411	144.972	144.877	133.811	126.370	71.89%
BLK (B)	0.000	0.000	0.000	0.000	0.000	0.000	0.000	0.00%
CPL (B)	33.312	38.654	42.479	39.542	29.338	37.545	37.378	21.27%
	Sell & Buy Orders Traded per Price Type							(%)
PPT (S)	2276	2284	2119	1990	2001	2063	2035	44.94%
HBD (S)	2788	2973	2968	3040	2910	2647	2482	54.81%
BLK (S)	12	13	13	15	13	12	11	0.24%
PPT (B)	2187	2194	2196	2224	2268	2377	2257	37.51%
HBD (B)	3969	3908	3999	4023	4030	3907	3760	62.49%
BLK (B)	0	0	0	0	0	0	0	0.00%

- MCP** Market Clearing Price (€/MWh)
- PPT** Priority Price-Taking
- HBD** Hybrid
- BLK** Block
- CPL** Market Coupling Flow

Trade's Volume Mix

	Sell - MWh	Buy - MWh	
Lignite (4.7%)	8,213	0	(0.0%)
Crete Conv. (0.0%)	0	0	(0.0%)
Gas (27.5%)	48,286	0	(0.0%)
Hydro (15.4%)	27,060	0	(0.0%)
Imports (3.4%)	5,970		
RES (47.5%)	83,447	910	(0.5%)
Crete RES (1.6%)	2,794	0	(0.0%)
HV Load (0.0%)	0	19,234	(10.9%)
MV Load (0.0%)	0	19,147	(10.9%)
LV Load (0.0%)	0	76,497	(43.5%)
Crete Load (0.0%)	0	6,307	(3.6%)
Pumping (0.0%)	0	248	(0.1%)
Exports		51,208	(29.1%)
Sys.Losses (0.0%)	0	2,220	(1.3%)
D/R Load (0.0%)	0	0	(0.0%)

