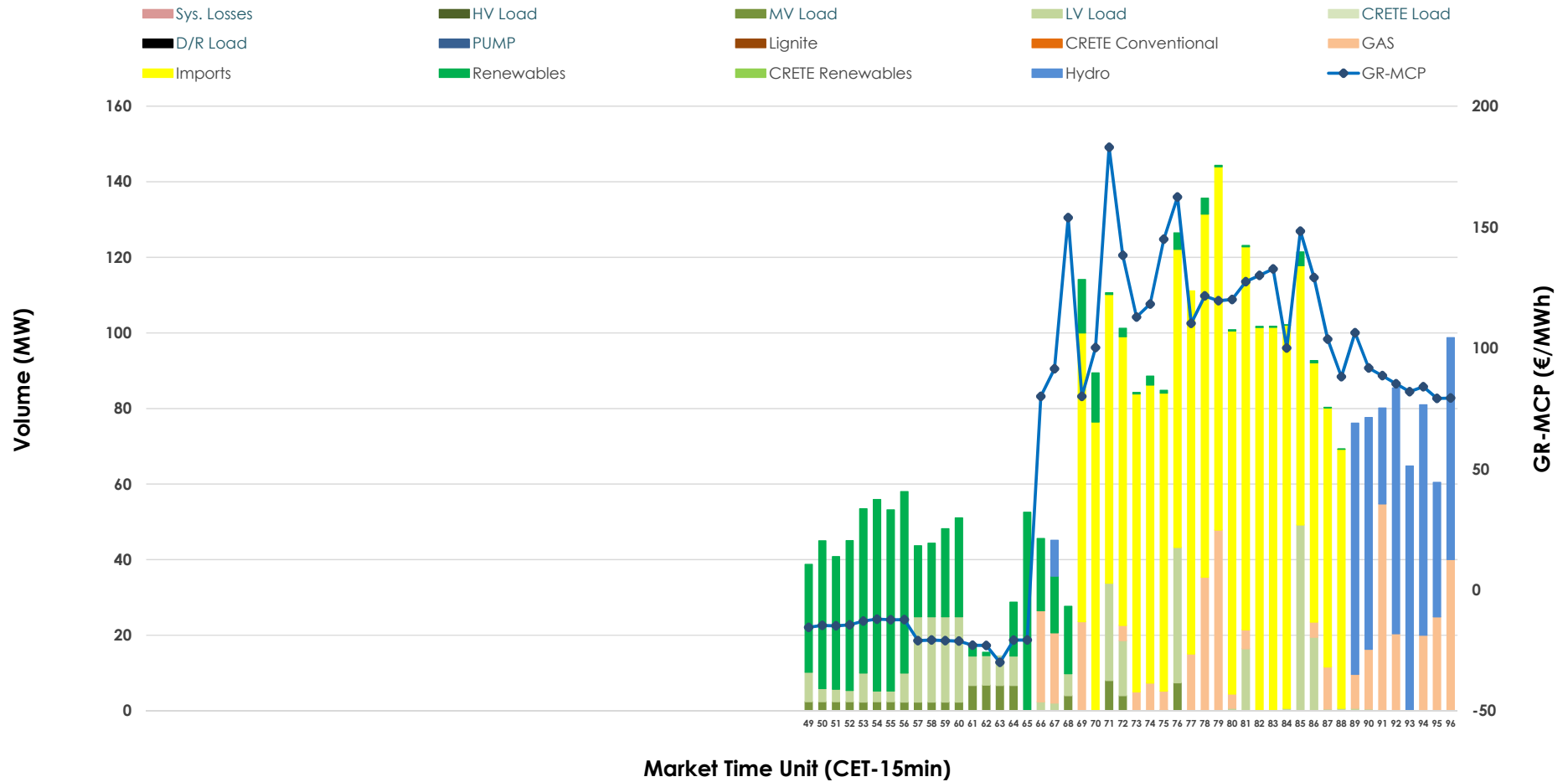


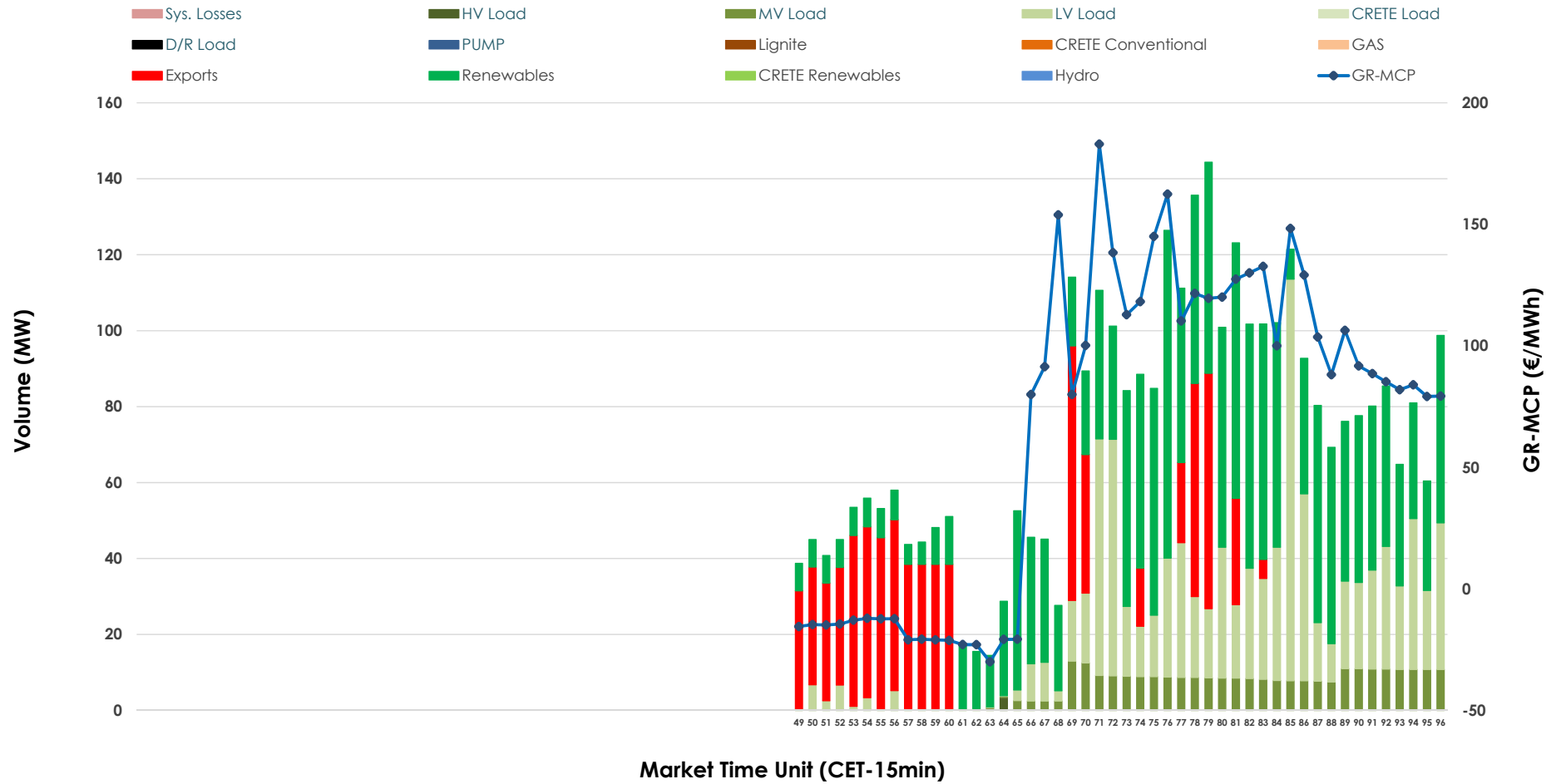


# IDA '3' Market Outlook

18.02.2026 IDA '3' Market - Sell



### 18.02.2026 IDA '3' Market - Buy



### GR Bidding Zone Weekly Figures

Delivery Day	12.02	13.02	14.02	15.02	16.02	17.02	18.02
	👇 -18%	👆 43%	👇 -42%	👇 -27%	👆 78%	👇 -11%	👇 -1%
<b>Avg.MCP (€/MWh)</b>	70.24	100.63	58.35	42.34	75.28	67.12	66.30
<b>Max.MCP (€/MWh)</b>	101.74	148.40	108.25	92.78	163.98	156.53	183.02
<b>Min.MCP (€/MWh)</b>	-24.99	47.95	1.44	-8.53	-35.00	-10.00	-29.99
	👇 -65%	👆 276%	👇 -38%	👆 5%	👆 32%	👇 -28%	👇 -22%
<b>Tot.Vol(GWh)</b>	0.99	3.70	2.29	2.40	3.18	2.27	1.77

### Trades by Order Type

Delivery Day		12.02	13.02	14.02	15.02	16.02	17.02	18.02	
<b>Ord Price Type</b>		Sell & Buy Trades in (GWh) per Price Type							(%)
<b>PPT</b>	(S)	0.000	0.000	0.000	0.000	0.000	0.000	0.000	0.00%
<b>HBD</b>	(S)	0.493	1.744	1.092	1.202	0.768	0.877	0.462	52.28%
<b>BLK</b>	(S)	0.000	0.000	0.000	0.000	0.000	0.000	0.000	0.00%
<b>CPL</b>	(S)	0.000	0.108	0.052	0.000	0.822	0.261	0.421	47.72%
<b>PPT</b>	(B)	0.000	0.000	0.000	0.000	0.000	0.000	0.000	0.00%
<b>HBD</b>	(B)	0.453	1.435	1.113	1.027	1.525	0.889	0.696	78.85%
<b>BLK</b>	(B)	0.000	0.000	0.000	0.000	0.000	0.000	0.000	0.00%
<b>CPL</b>	(B)	0.040	0.417	0.031	0.175	0.064	0.248	0.187	21.15%
		Sell & Buy Orders Traded per Price Type							(%)
<b>PPT</b>	(S)	0	0	0	0	0	0	0	0.00%
<b>HBD</b>	(S)	147	158	203	165	181	86	108	100.00%
<b>BLK</b>	(S)	0	0	0	0	0	0	0	0.00%
<b>PPT</b>	(B)	0	0	0	0	0	0	0	0.00%
<b>HBD</b>	(B)	208	366	207	137	330	319	395	100.00%
<b>BLK</b>	(B)	0	0	0	0	0	0	0	0.00%

- MCP** Market Clearing Price (€/MWh)
- PPT** Priority Price-Taking
- HBD** Hybrid
- BLK** Block
- CPL** Market Coupling Flow

### Trade's Volume Mix

	Sell - MWh	Buy - MWh	
<b>Lignite</b> (0.0%)	0	0	(0.0%)
<b>Crete Conv.</b> (0.0%)	0	0	(0.0%)
<b>Gas</b> (11.2%)	99	0	(0.0%)
<b>Hydro</b> (12.7%)	112	0	(0.0%)
<b>Imports</b> (47.7%)	421		
<b>RES</b> (16.7%)	148	397	(44.9%)
<b>Crete RES</b> (0.0%)	0	0	(0.0%)
<b>HV Load</b> (0.0%)	0	1	(0.1%)
<b>MV Load</b> (2.2%)	20	70	(7.9%)
<b>LV Load</b> (9.5%)	84	229	(25.9%)
<b>Crete Load</b> (0.0%)	0	0	(0.0%)
<b>Pumping</b> (0.0%)	0	0	(0.0%)
<b>Exports</b>		187	(21.1%)
<b>Sys.Losses</b> (0.0%)	0	0	(0.0%)
<b>D/R Load</b> (0.0%)	0	0	(0.0%)

