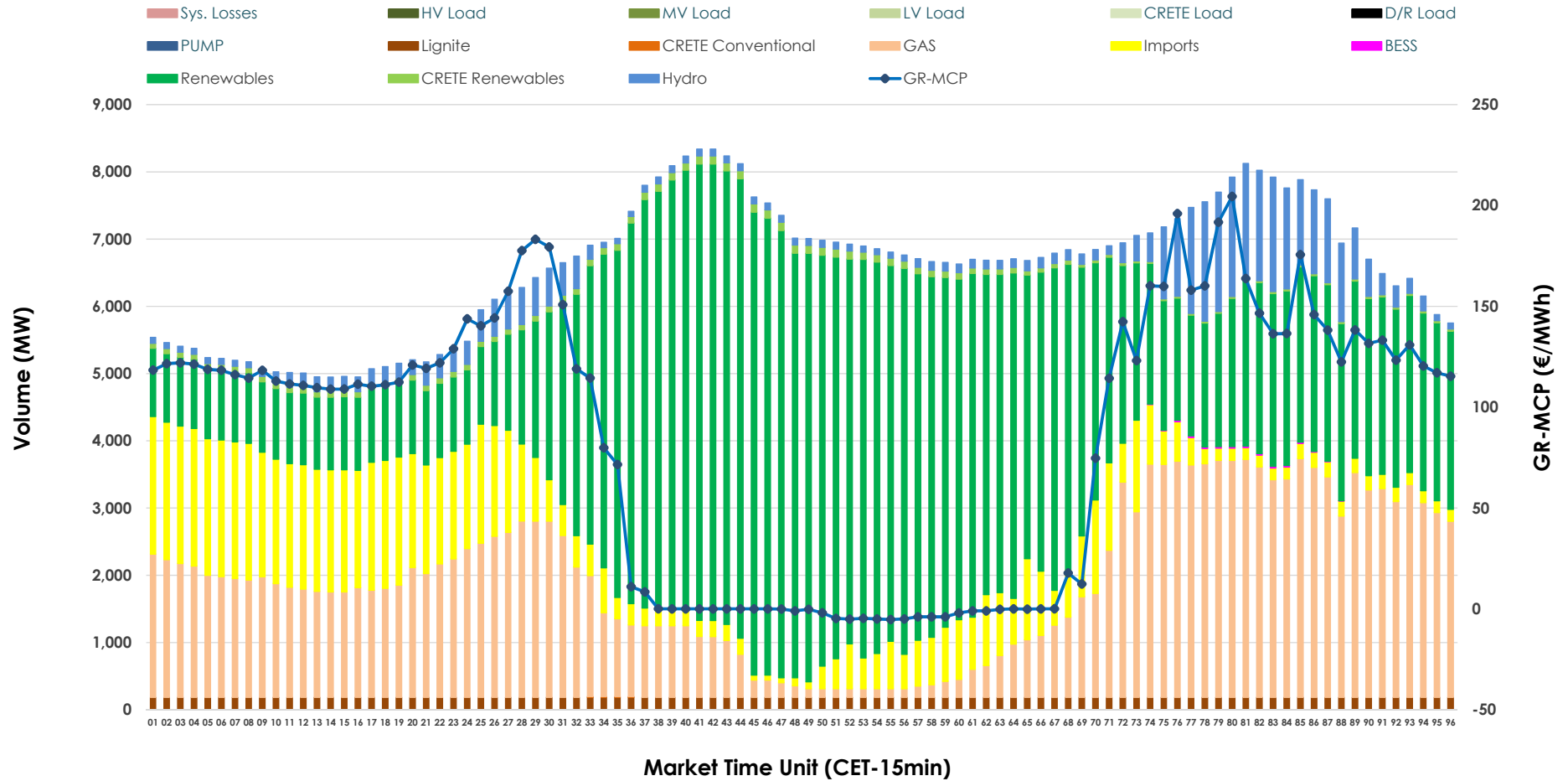


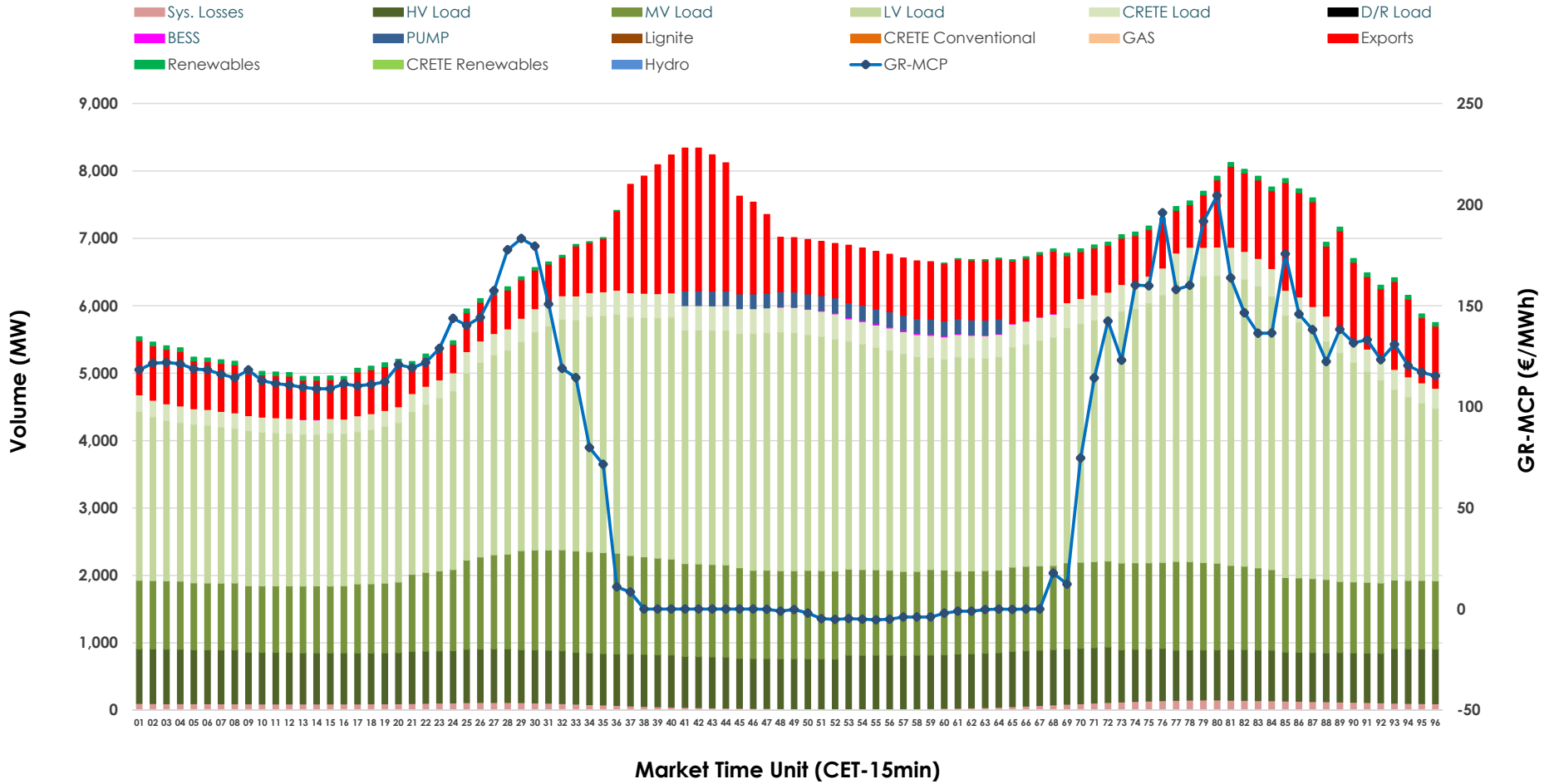


# Day-Ahead Market Outlook

07.04.2026 Day-Ahead Market - Sell



### 07.04.2026 Day-Ahead Market - Buy



### GR Bidding Zone Weekly Figures

Delivery Day	01.04	02.04	03.04	04.04	05.04	06.04	07.04
	↗ 16%	↘ -12%	↘ -5%	↘ -46%	↘ -56%	↗ 126%	↗ 21%
<b>Avg.MCP (€/MWh)</b>	154.99	136.58	129.62	70.29	31.16	70.35	85.32
<b>Max.MCP (€/MWh)</b>	239.12	196.93	215.54	187.56	141.02	185.89	204.50
<b>Min.MCP (€/MWh)</b>	119.18	105.00	22.09	0.00	-50.00	-25.02	-5.30
	↗ 3%	→ 0%	↘ -12%	↘ -8%	↘ -8%	↗ 9%	↗ 8%
<b>Tot.Vol(GWh)</b>	361.49	360.02	318.52	292.69	269.89	294.16	316.70

### Trades by Order Type

Delivery Day		01.04	02.04	03.04	04.04	05.04	06.04	07.04	
<b>Ord Price Type</b>		<b>Sell &amp; Buy Trades in (GWh) per Price Type</b>							<b>(%)</b>
<b>PPT</b>	(S)	56.513	68.739	50.740	54.159	67.826	55.691	50.282	31.75%
<b>HBD</b>	(S)	74.726	73.492	61.037	61.632	50.179	52.265	65.823	41.57%
<b>BLK</b>	(S)	41.726	33.560	36.198	15.314	9.239	12.305	26.897	16.99%
<b>CPL</b>	(S)	7.778	4.221	11.285	15.240	7.703	26.818	15.351	9.69%
<b>PPT</b>	(B)	14.771	14.608	13.665	13.285	12.273	13.969	14.822	9.36%
<b>HBD</b>	(B)	148.563	151.077	140.527	128.816	118.500	131.370	133.078	84.04%
<b>BLK</b>	(B)	0.000	0.000	0.000	0.000	0.000	0.000	0.000	0.00%
<b>CPL</b>	(B)	17.409	14.326	5.069	4.244	4.173	1.739	10.452	6.60%
		<b>Sell &amp; Buy Orders Traded per Price Type</b>							<b>(%)</b>
<b>PPT</b>	(S)	1558	1510	1522	1606	1579	1525	1462	33.70%
<b>HBD</b>	(S)	3061	3012	3159	2729	1986	2384	2864	66.02%
<b>BLK</b>	(S)	20	16	16	6	8	9	12	0.28%
<b>PPT</b>	(B)	2261	2271	2238	2222	2234	2307	2350	36.82%
<b>HBD</b>	(B)	4083	4170	4001	4119	4339	3974	4032	63.18%
<b>BLK</b>	(B)	0	0	0	0	0	0	0	0.00%

- MCP** Market Clearing Price (€/MWh)
- PPT** Priority Price-Taking
- HBD** Hybrid
- BLK** Block
- CPL** Market Coupling Flow

### Trade's Volume Mix

	Sell - MWh	Buy - MWh	
<b>Lignite</b> (2.8%)	4,392	0	(0.0%)
<b>Crete Conv.</b> (0.0%)	12	0	(0.0%)
<b>Gas</b> (26.9%)	42,634	0	(0.0%)
<b>Hydro</b> (5.9%)	9,379	0	(0.0%)
<b>Imports</b> (13.1%)	20,678		
<b>RES</b> (50.1%)	79,412	810	(0.5%)
<b>Crete RES</b> (1.1%)	1,776	0	(0.0%)
<b>BESS</b> (0.0%)	69	83	(0.1%)
<b>HV Load</b> (0.0%)	0	18,581	(11.7%)
<b>MV Load</b> (0.0%)	0	29,246	(18.5%)
<b>LV Load</b> (0.0%)	0	76,222	(48.1%)
<b>Crete Load</b> (0.0%)	0	7,848	(5.0%)
<b>Pumping</b> (0.0%)	0	1,320	(0.8%)
<b>Exports</b>		22,167	(14.0%)
<b>Sys.Losses</b> (0.0%)	0	2,075	(1.3%)
<b>D/R Load</b> (0.0%)	0	0	(0.0%)

