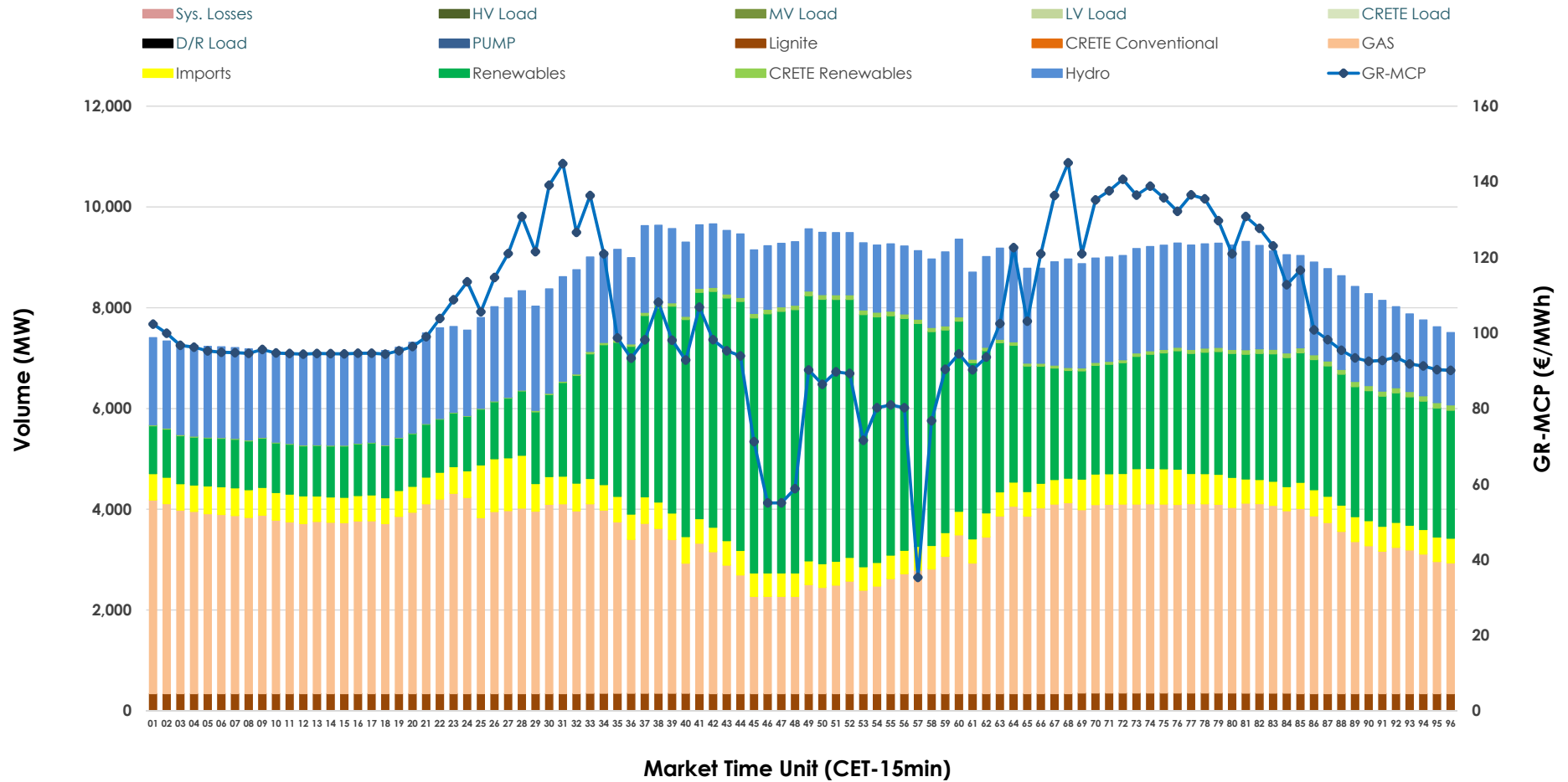


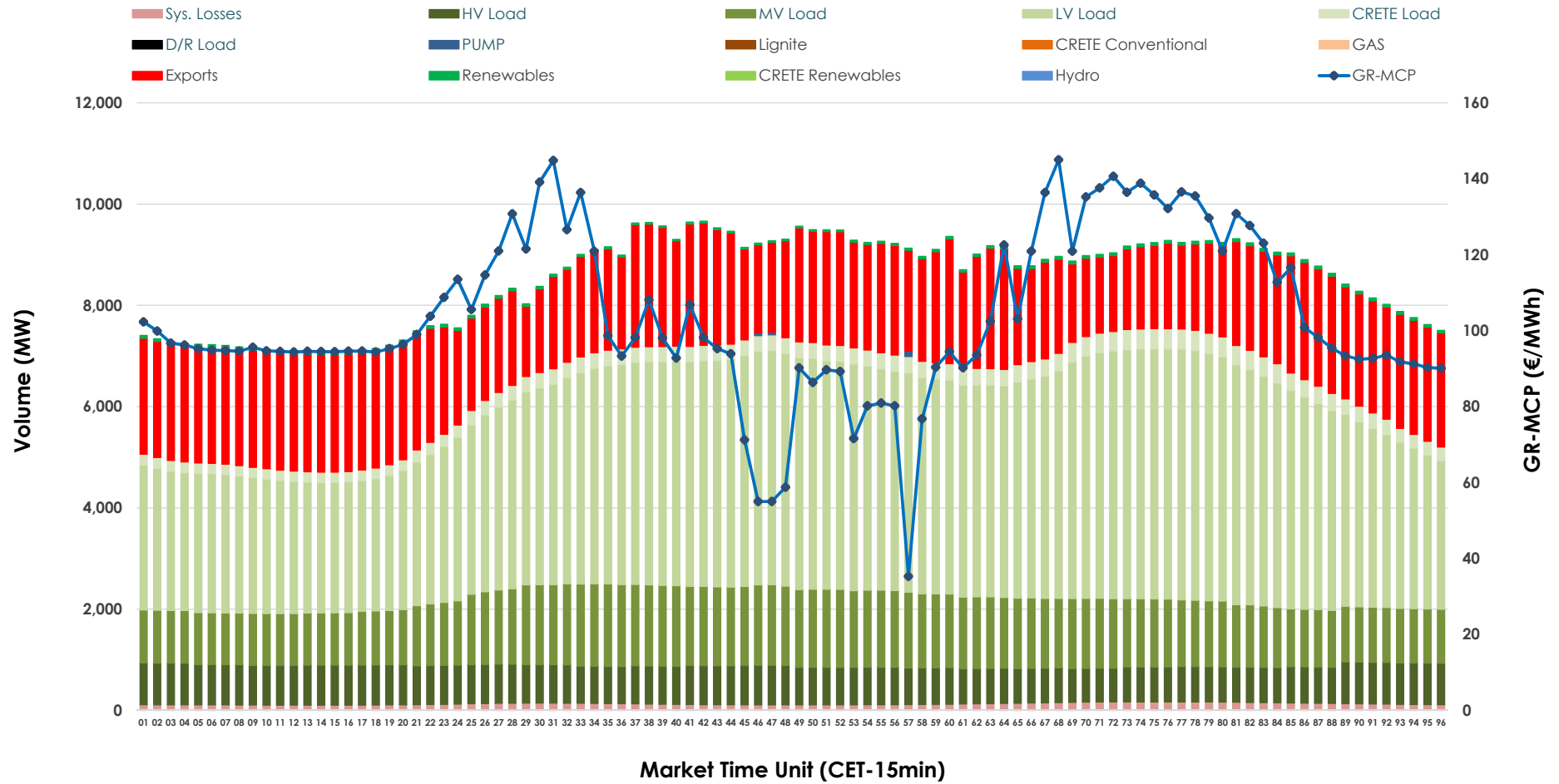


Day-Ahead Market Outlook

11.02.2026 Day-Ahead Market - Sell



11.02.2026 Day-Ahead Market - Buy



GR Bidding Zone Weekly Figures

Delivery Day	05.02	06.02	07.02	08.02	09.02	10.02	11.02
	➔ 1%	⬇️ -5%	⬇️ -28%	⬆️ 26%	⬆️ 50%	⬇️ -10%	⬇️ -11%
Avg.MCP (€/MWh)	101.12	96.42	69.15	87.19	130.53	117.00	103.57
Max.MCP (€/MWh)	158.84	143.87	138.17	137.01	217.65	183.80	145.00
Min.MCP (€/MWh)	52.50	0.10	-0.10	0.01	96.06	89.31	35.29
	➔ 1%	⬇️ -3%	⬇️ -6%	⬆️ -4%	⬆️ 4%	⬆️ 5%	➔ 0%
Tot.Vol(GWh)	425.83	412.48	387.98	372.80	387.84	407.28	409.25

Trades by Order Type

Delivery Day		05.02	06.02	07.02	08.02	09.02	10.02	11.02	
Ord Price Type		Sell & Buy Trades in (GWh) per Price Type							(%)
PPT	(S)	100.032	98.643	97.391	90.104	88.222	95.796	102.018	49.86%
HBD	(S)	75.250	72.470	75.676	70.823	62.341	69.091	66.237	32.37%
BLK	(S)	37.633	32.126	20.926	25.473	40.788	36.594	35.597	17.40%
CPL	(S)	0.000	3.000	0.000	0.000	2.568	2.161	0.771	0.38%
PPT	(B)	13.913	13.578	13.223	13.616	13.693	13.846	13.499	6.60%
HBD	(B)	152.005	148.188	135.733	132.020	145.360	150.538	150.234	73.42%
BLK	(B)	0.000	0.000	0.000	0.000	0.000	0.000	0.000	0.00%
CPL	(B)	46.997	44.473	45.036	40.764	34.865	39.257	40.890	19.98%
		Sell & Buy Orders Traded per Price Type							(%)
PPT	(S)	2154	2193	2220	2129	2318	2423	2522	46.96%
HBD	(S)	2809	2799	2348	2697	3008	2939	2839	52.86%
BLK	(S)	13	13	8	11	12	8	10	0.19%
PPT	(B)	2227	2220	2356	2334	2236	2234	2218	35.57%
HBD	(B)	3881	4062	4294	4200	3870	4029	4018	64.43%
BLK	(B)	0	0	0	0	0	0	0	0.00%

MCP Market Clearing Price (€/MWh)
PPT Priority Price-Taking
HBD Hybrid
BLK Block
CPL Market Coupling Flow

Trade's Volume Mix

		Sell - MWh	Buy - MWh	
Lignite	(4.0%)	8,231	0	(0.0%)
Crete Conv.	(0.0%)	0	0	(0.0%)
Gas	(38.1%)	77,955	0	(0.0%)
Hydro	(20.4%)	41,673	0	(0.0%)
Imports	(6.4%)	13,017		
RES	(30.5%)	62,322	1,171	(0.6%)
Crete RES	(0.7%)	1,425	0	(0.0%)
HV Load	(0.0%)	0	18,028	(8.8%)
MV Load	(0.0%)	0	31,673	(15.5%)
LV Load	(0.0%)	0	93,474	(45.7%)
Crete Load	(0.0%)	0	7,181	(3.5%)
Pumping	(0.0%)	0	54	(0.0%)
Exports			49,964	(24.4%)
Sys.Losses	(0.0%)	0	3,077	(1.5%)
D/R Load	(0.0%)	0	0	(0.0%)

