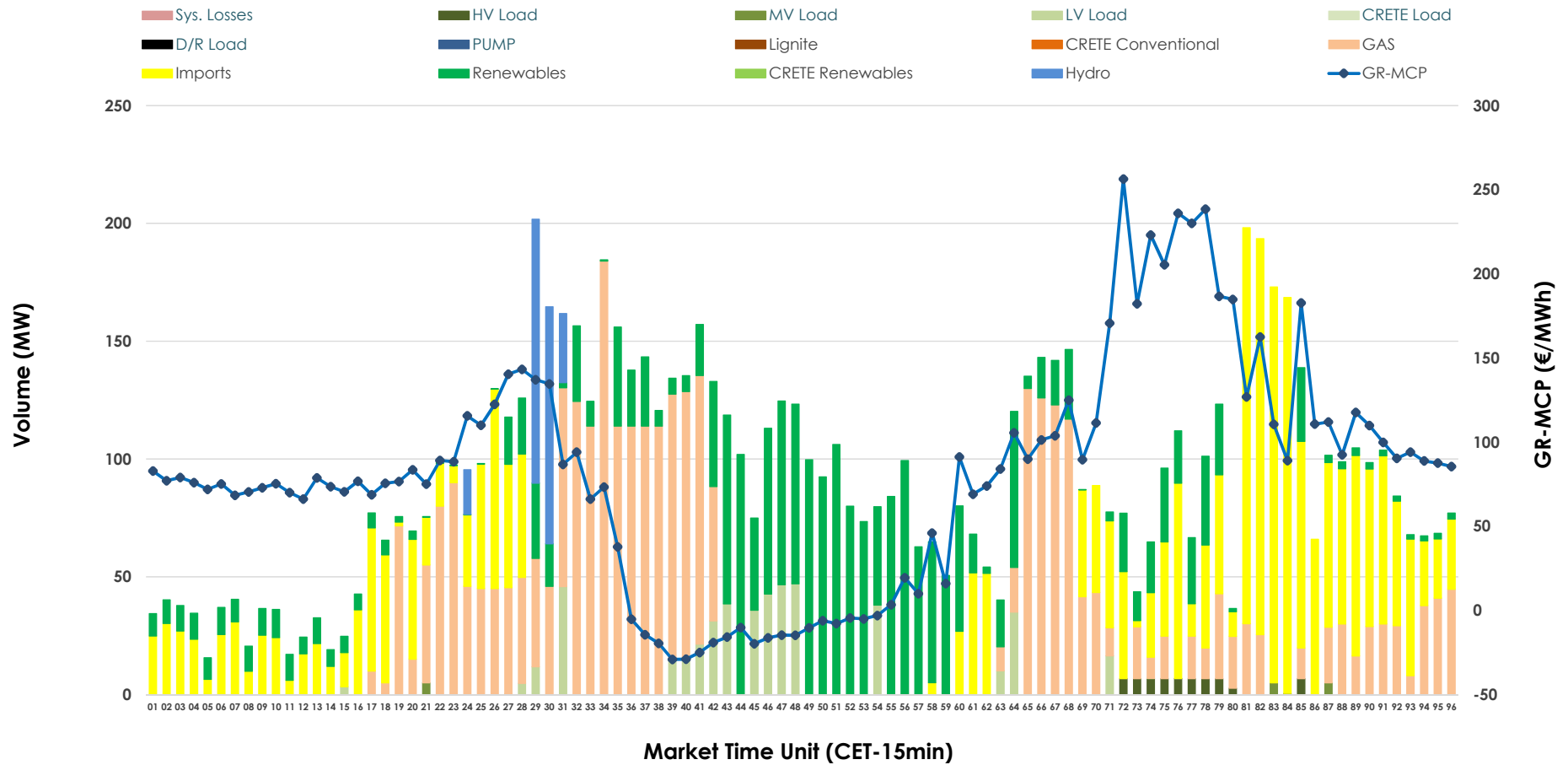


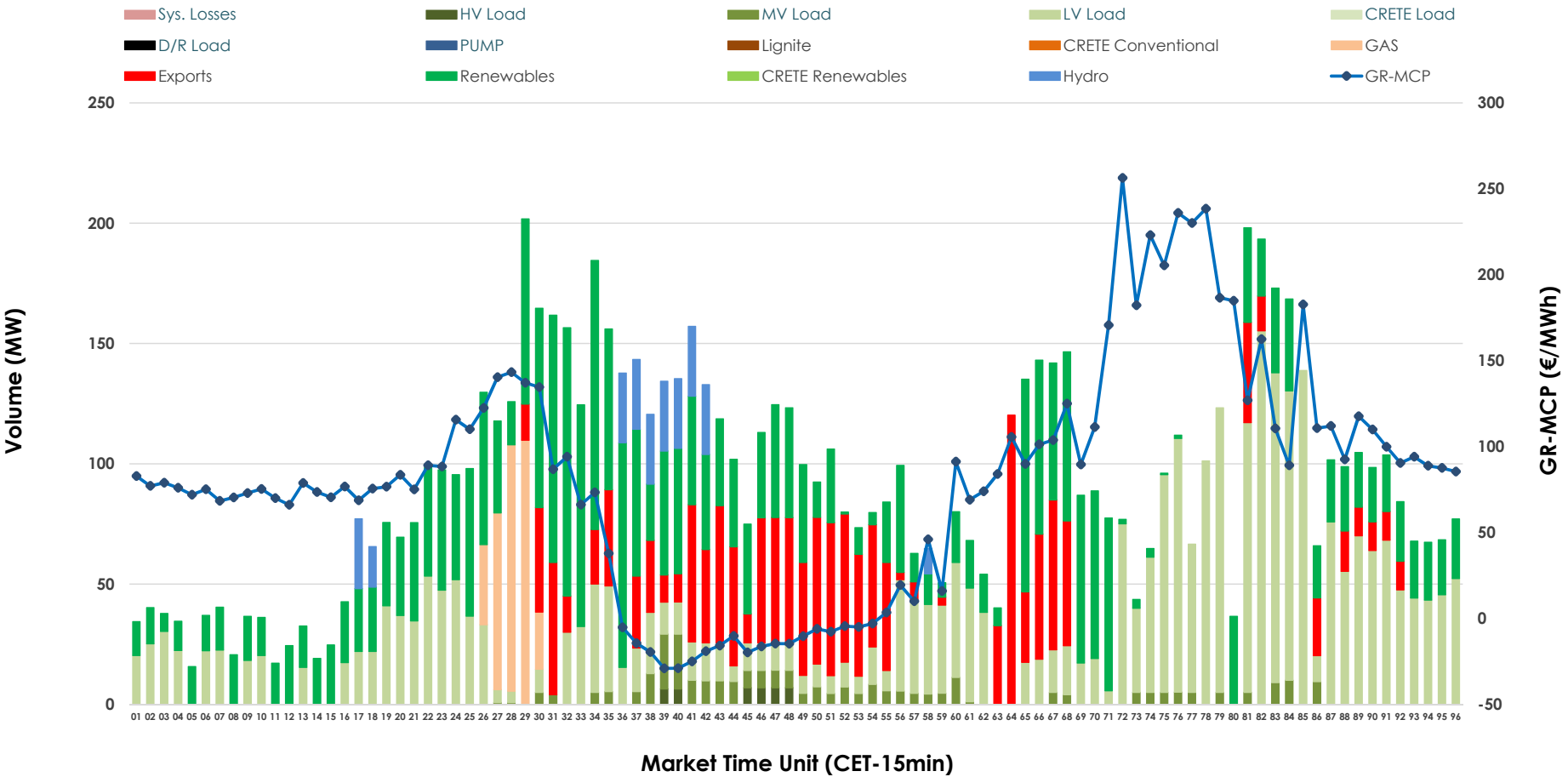


# IDA '2' Market Outlook

02.03.2026 IDA '2' Market - Sell



02.03.2026 IDA '2' Market - Buy



### GR Bidding Zone Weekly Figures

Delivery Day	24.02	25.02	26.02	27.02	28.02	01.03	02.03
	↗ 18%	↘ -15%	↘ -4%	↗ 25%	↘ -23%	↘ -31%	↗ 130%
<b>Avg.MCP (€/MWh)</b>	64.22	54.61	52.41	65.67	50.54	35.08	80.72
<b>Max.MCP (€/MWh)</b>	140.04	155.01	130.70	148.51	105.45	115.24	256.35
<b>Min.MCP (€/MWh)</b>	-12.33	-12.63	-35.00	-7.89	-20.07	-35.00	-29.06
	↘ -27%	↘ -8%	↗ 3%	↗ 9%	↗ 299%	↘ -73%	↗ 6%
<b>Tot.Vol(GWh)</b>	3.77	3.49	3.60	3.92	15.63	4.23	4.50

### Trades by Order Type

Delivery Day		24.02	25.02	26.02	27.02	28.02	01.03	02.03	
<b>Ord Price Type</b>		<b>Sell &amp; Buy Trades in (GWh) per Price Type</b>							<b>(%)</b>
<b>PPT</b>	(S)	0.000	0.000	0.000	0.000	0.000	0.000	0.000	0.00%
<b>HBD</b>	(S)	1.491	1.499	1.717	0.956	1.932	1.809	1.551	69.00%
<b>BLK</b>	(S)	0.000	0.000	0.000	0.000	0.000	0.000	0.000	0.00%
<b>CPL</b>	(S)	0.394	0.244	0.083	1.004	5.884	0.309	0.697	31.00%
<b>PPT</b>	(B)	0.000	0.000	0.000	0.000	0.000	0.000	0.000	0.00%
<b>HBD</b>	(B)	1.390	1.471	1.682	1.863	7.476	1.518	1.866	82.98%
<b>BLK</b>	(B)	0.000	0.000	0.000	0.000	0.000	0.000	0.000	0.00%
<b>CPL</b>	(B)	0.496	0.273	0.117	0.097	0.340	0.599	0.383	17.02%
		<b>Sell &amp; Buy Orders Traded per Price Type</b>							<b>(%)</b>
<b>PPT</b>	(S)	0	0	0	0	0	0	0	0.00%
<b>HBD</b>	(S)	234	268	254	213	205	253	221	100.00%
<b>BLK</b>	(S)	0	0	0	0	0	0	0	0.00%
<b>PPT</b>	(B)	0	0	0	0	0	0	0	0.00%
<b>HBD</b>	(B)	368	415	474	492	261	361	480	100.00%
<b>BLK</b>	(B)	0	0	0	0	0	0	0	0.00%

- MCP** Market Clearing Price (€/MWh)
- PPT** Priority Price-Taking
- HBD** Hybrid
- BLK** Block
- CPL** Market Coupling Flow

### Trade's Volume Mix

	Sell - MWh	Buy - MWh	
<b>Lignite</b> (0.0%)	0	0	(0.0%)
<b>Crete Conv.</b> (0.0%)	0	0	(0.0%)
<b>Gas</b> (34.7%)	779	86	(3.8%)
<b>Hydro</b> (2.9%)	65	65	(2.9%)
<b>Imports</b> (31.0%)	697		
<b>RES</b> (25.4%)	572	805	(35.8%)
<b>Crete RES</b> (0.0%)	0	0	(0.0%)
<b>HV Load</b> (0.7%)	16	10	(0.4%)
<b>MV Load</b> (0.2%)	4	75	(3.3%)
<b>LV Load</b> (5.1%)	115	825	(36.7%)
<b>Crete Load</b> (0.0%)	0	0	(0.0%)
<b>Pumping</b> (0.0%)	0	0	(0.0%)
<b>Exports</b>		383	(17.0%)
<b>Sys.Losses</b> (0.0%)	0	0	(0.0%)
<b>D/R Load</b> (0.0%)	0	0	(0.0%)

