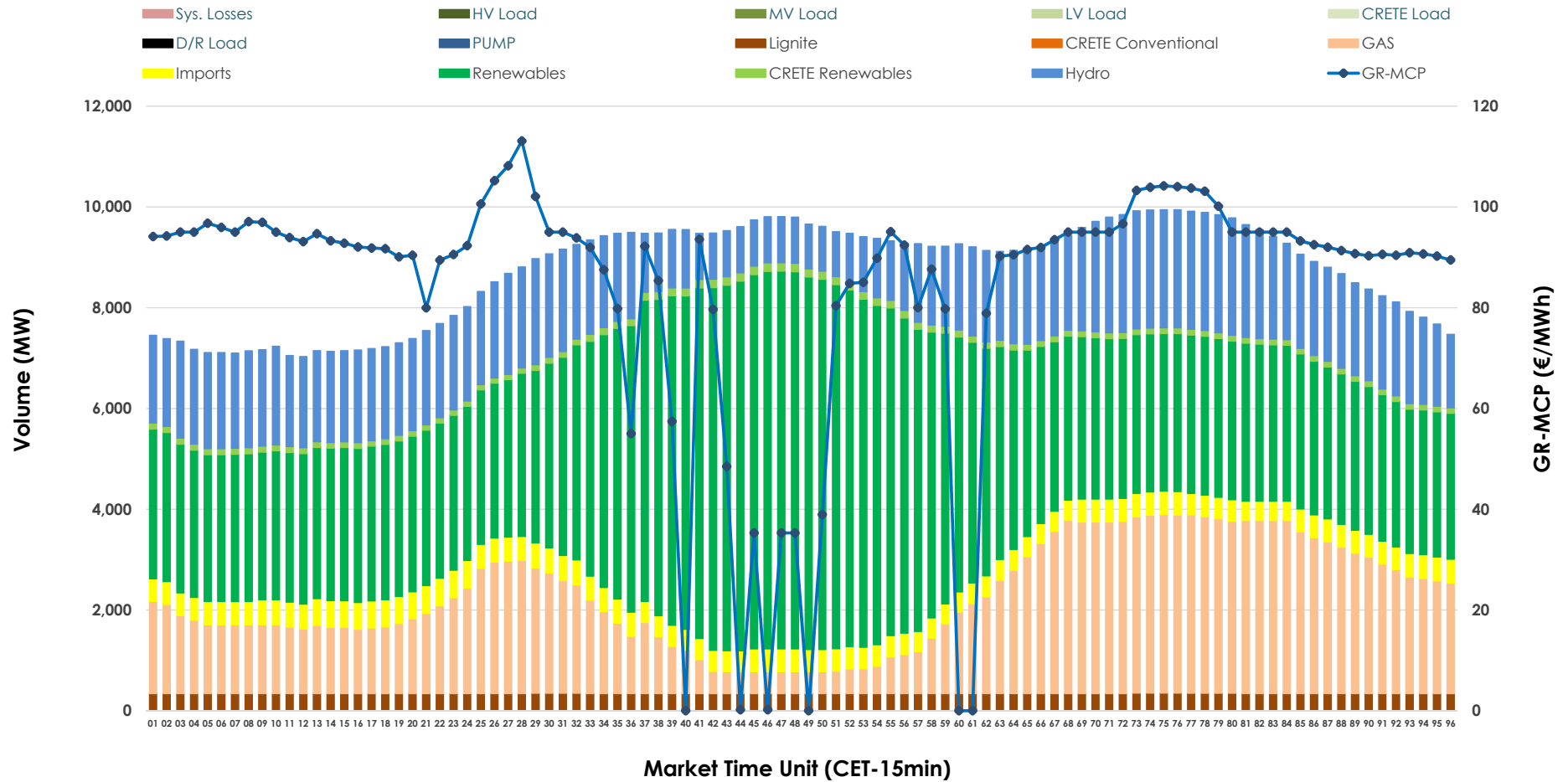


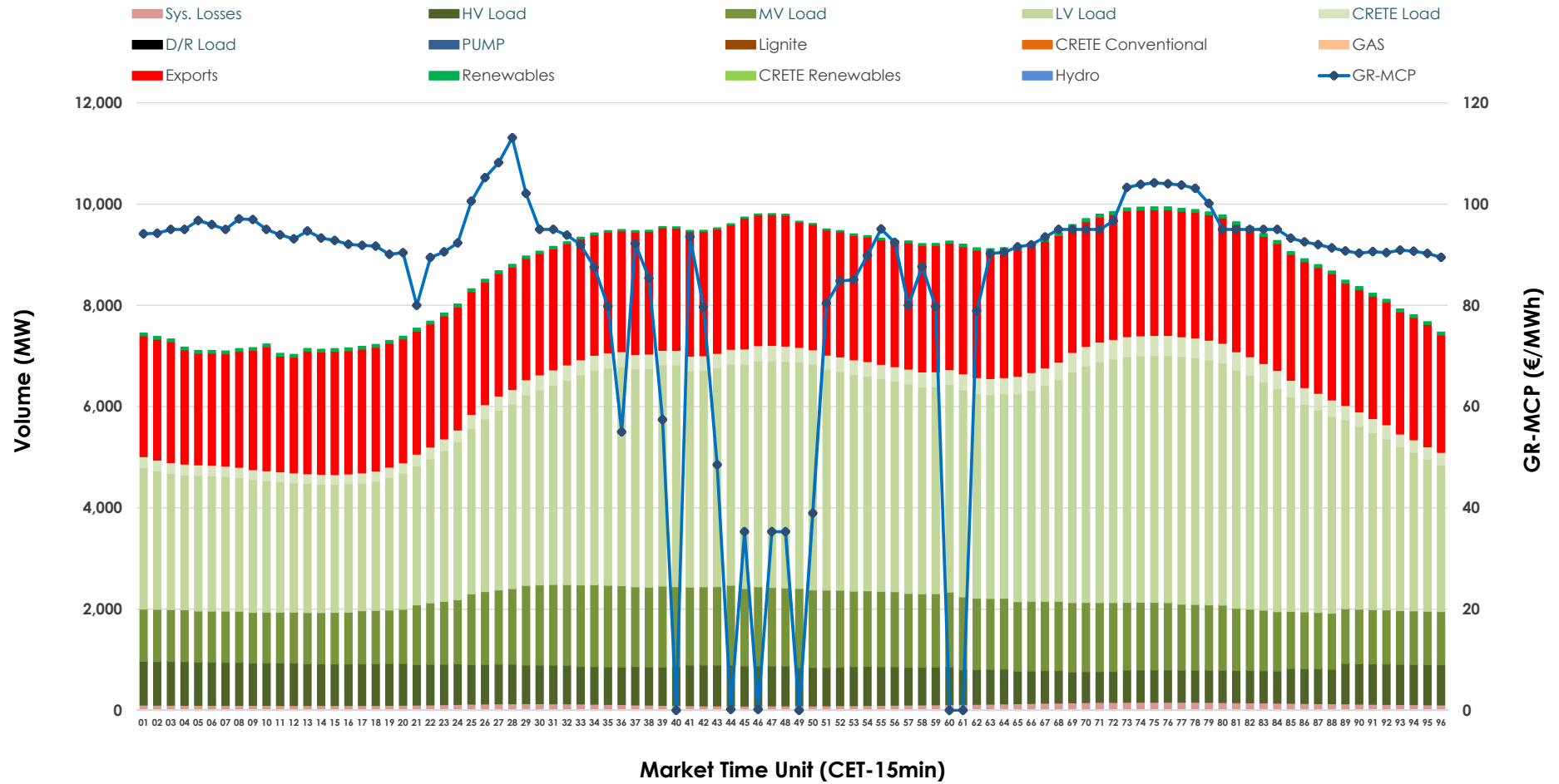


# Day-Ahead Market Outlook

## 12.02.2026 Day-Ahead Market - Sell



### 12.02.2026 Day-Ahead Market - Buy



### GR Bidding Zone Weekly Figures

Delivery Day	06.02	07.02	08.02	09.02	10.02	11.02	12.02
	👇 -5%	👇 -28%	👈 26%	👆 50%	👇 -10%	👇 -11%	👇 -19%
<b>Avg.MCP (€/MWh)</b>	96.42	69.15	87.19	130.53	117.00	103.57	83.74
<b>Max.MCP (€/MWh)</b>	143.87	138.17	137.01	217.65	183.80	145.00	113.10
<b>Min.MCP (€/MWh)</b>	0.10	-0.10	0.01	96.06	89.31	35.29	0.01
	👇 -3%	👇 -6%	👇 -4%	👈 4%	👈 5%	👉 0%	👈 3%
<b>Tot.Vol(GWh)</b>	412.48	387.98	372.80	387.84	407.28	409.25	420.46

### Trades by Order Type

Delivery Day		06.02	07.02	08.02	09.02	10.02	11.02	12.02	
<b>Ord Price Type</b>		<b>Sell &amp; Buy Trades in (GWh) per Price Type</b>							<b>(%)</b>
<b>PPT</b>	(S)	98.643	97.391	90.104	88.222	95.796	102.018	115.484	54.93%
<b>HBD</b>	(S)	72.470	75.676	70.823	62.341	69.091	66.237	72.762	34.61%
<b>BLK</b>	(S)	32.126	20.926	25.473	40.788	36.594	35.597	21.985	10.46%
<b>CPL</b>	(S)	3.000	0.000	0.000	2.568	2.161	0.771	0.000	0.00%
<b>PPT</b>	(B)	13.578	13.223	13.616	13.693	13.846	13.499	13.165	6.26%
<b>HBD</b>	(B)	148.188	135.733	132.020	145.360	150.538	150.234	150.839	71.75%
<b>BLK</b>	(B)	0.000	0.000	0.000	0.000	0.000	0.000	0.000	0.00%
<b>CPL</b>	(B)	44.473	45.036	40.764	34.865	39.257	40.890	46.227	21.99%
		<b>Sell &amp; Buy Orders Traded per Price Type</b>							<b>(%)</b>
<b>PPT</b>	(S)	2193	2220	2129	2318	2423	2522	2454	47.48%
<b>HBD</b>	(S)	2799	2348	2697	3008	2939	2839	2701	52.26%
<b>BLK</b>	(S)	13	8	11	12	8	10	13	0.25%
<b>PPT</b>	(B)	2220	2356	2334	2236	2234	2218	2237	35.32%
<b>HBD</b>	(B)	4062	4294	4200	3870	4029	4018	4097	64.68%
<b>BLK</b>	(B)	0	0	0	0	0	0	0	0.00%

- MCP** Market Clearing Price (€/MWh)
- PPT** Priority Price-Taking
- HBD** Hybrid
- BLK** Block
- CPL** Market Coupling Flow

### Trade's Volume Mix

		Sell - MWh	Buy - MWh	
<b>Lignite</b>	(3.9%)	8,188	0	(0.0%)
<b>Crete Conv.</b>	(0.0%)	0	0	(0.0%)
<b>Gas</b>	(22.2%)	46,632	0	(0.0%)
<b>Hydro</b>	(19.8%)	41,608	0	(0.0%)
<b>Imports</b>	(5.2%)	10,962		
<b>RES</b>	(47.5%)	99,806	1,089	(0.5%)
<b>Crete RES</b>	(1.4%)	3,036	0	(0.0%)
<b>HV Load</b>	(0.0%)	0	18,029	(8.6%)
<b>MV Load</b>	(0.0%)	0	31,394	(14.9%)
<b>LV Load</b>	(0.0%)	0	91,360	(43.5%)
<b>Crete Load</b>	(0.0%)	0	6,971	(3.3%)
<b>Pumping</b>	(0.0%)	0	0	(0.0%)
<b>Exports</b>			58,537	(27.8%)
<b>Sys.Losses</b>	(0.0%)	0	2,852	(1.4%)
<b>D/R Load</b>	(0.0%)	0	0	(0.0%)

