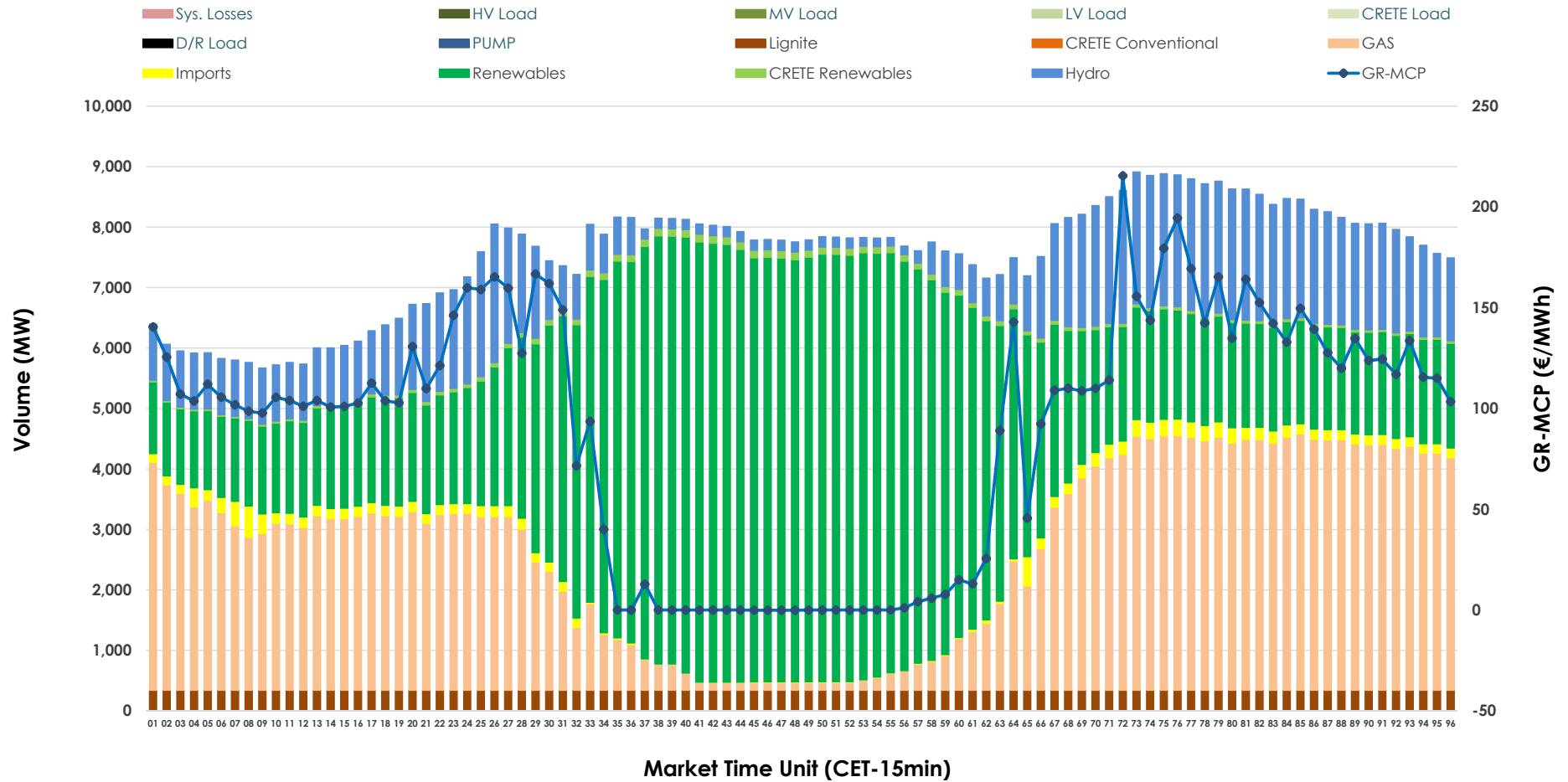


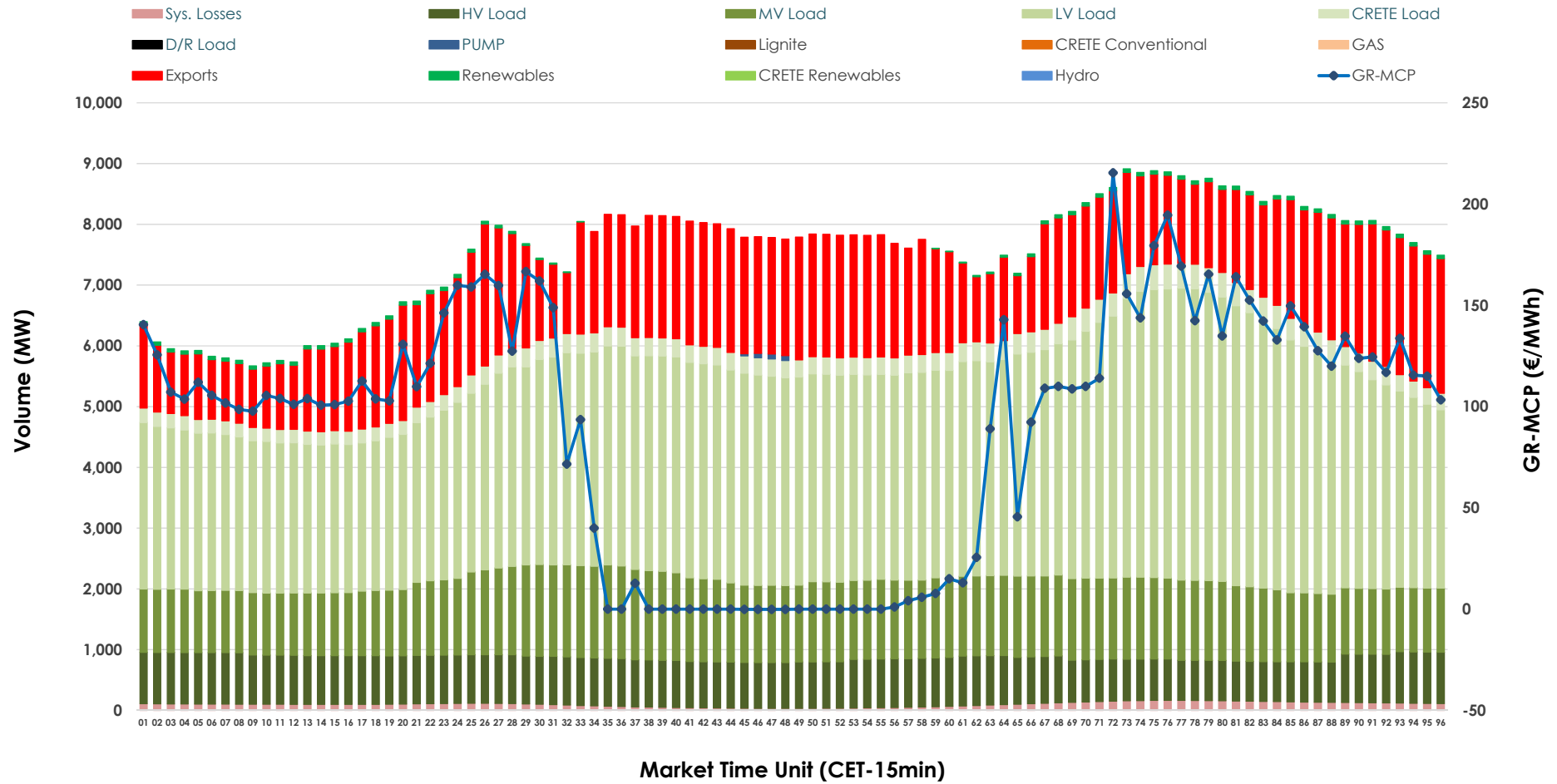


Day-Ahead Market Outlook

13.03.2026 Day-Ahead Market - Sell



13.03.2026 Day-Ahead Market - Buy



GR Bidding Zone Weekly Figures

Delivery Day	07.03	08.03	09.03	10.03	11.03	12.03	13.03
	👇 -4%	👇 -2%	➡ 1%	➡ 2%	➡ 10%	➡ 16%	👇 -17%
Avg.MCP (€/MWh)	83.96	82.31	82.94	84.90	93.35	108.24	89.55
Max.MCP (€/MWh)	168.31	172.04	247.48	253.89	240.49	247.52	215.45
Min.MCP (€/MWh)	-3.65	-1.83	-0.01	0.00	0.00	0.00	-0.10
	👇 -2%	👇 -5%	➡ 7%	👇 -2%	👇 -8%	➡ 5%	➡ 1%
Tot.Vol(GWh)	368.18	351.54	377.07	369.77	340.80	358.00	362.26

Trades by Order Type

Delivery Day		07.03	08.03	09.03	10.03	11.03	12.03	13.03	
Ord Price Type		Sell & Buy Trades in (GWh) per Price Type							(%)
PPT	(S)	94.504	93.458	103.168	92.307	79.824	79.190	88.806	49.03%
HBD	(S)	63.366	60.465	72.209	67.169	58.548	66.823	60.729	33.53%
BLK	(S)	25.786	21.848	13.159	25.386	26.866	29.533	31.267	17.26%
CPL	(S)	0.435	0.000	0.000	0.022	5.164	3.454	0.328	0.18%
PPT	(B)	12.736	12.023	13.216	12.949	12.840	13.965	14.237	7.86%
HBD	(B)	133.811	126.370	140.244	142.529	138.311	138.400	139.218	76.86%
BLK	(B)	0.000	0.000	0.000	0.000	0.000	0.000	0.000	0.00%
CPL	(B)	37.545	37.378	35.075	29.406	19.251	26.635	27.674	15.28%
		Sell & Buy Orders Traded per Price Type							(%)
PPT	(S)	2063	2035	2104	2050	1996	1979	1976	43.51%
HBD	(S)	2647	2482	2558	2512	2905	3046	2552	56.19%
BLK	(S)	12	11	4	13	10	14	14	0.31%
PPT	(B)	2377	2257	2354	2339	2312	2311	2364	36.66%
HBD	(B)	3907	3760	4001	4076	4033	3862	4085	63.34%
BLK	(B)	0	0	0	0	0	0	0	0.00%

MCP Market Clearing Price (€/MWh)
PPT Priority Price-Taking
HBD Hybrid
BLK Block
CPL Market Coupling Flow

Trade's Volume Mix

		Sell - MWh	Buy - MWh	
Lignite	(4.5%)	8,160	0	(0.0%)
Crete Conv.	(0.0%)	0	0	(0.0%)
Gas	(31.5%)	57,063	0	(0.0%)
Hydro	(15.0%)	27,178	0	(0.0%)
Imports	(1.9%)	3,390		
RES	(46.2%)	83,632	844	(0.5%)
Crete RES	(0.9%)	1,707	0	(0.0%)
HV Load	(0.0%)	0	18,525	(10.2%)
MV Load	(0.0%)	0	30,003	(16.6%)
LV Load	(0.0%)	0	82,087	(45.3%)
Crete Load	(0.0%)	0	7,202	(4.0%)
Pumping	(0.0%)	0	67	(0.0%)
Exports			40,024	(22.1%)
Sys.Losses	(0.0%)	0	2,376	(1.3%)
D/R Load	(0.0%)	0	0	(0.0%)

