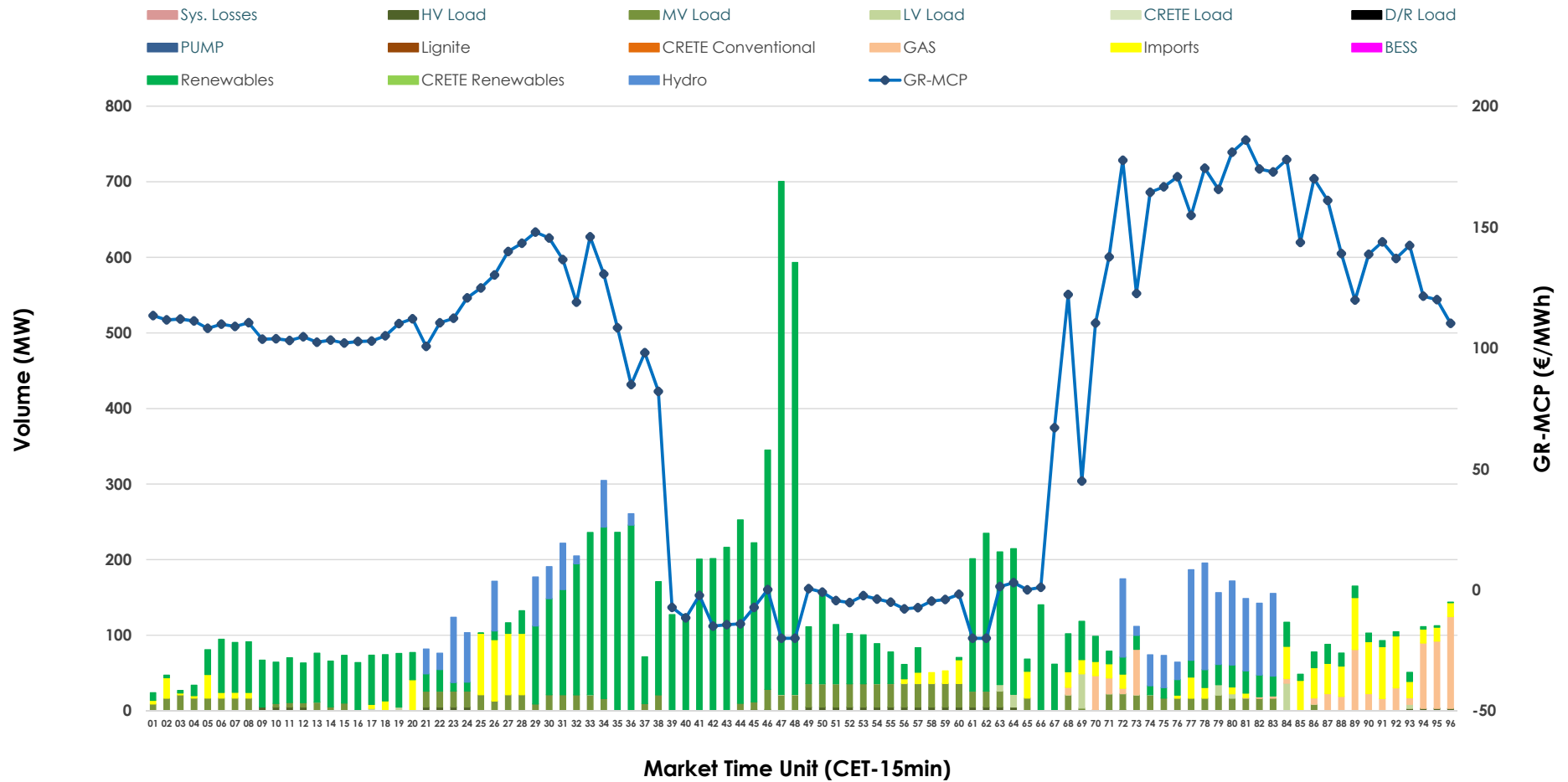


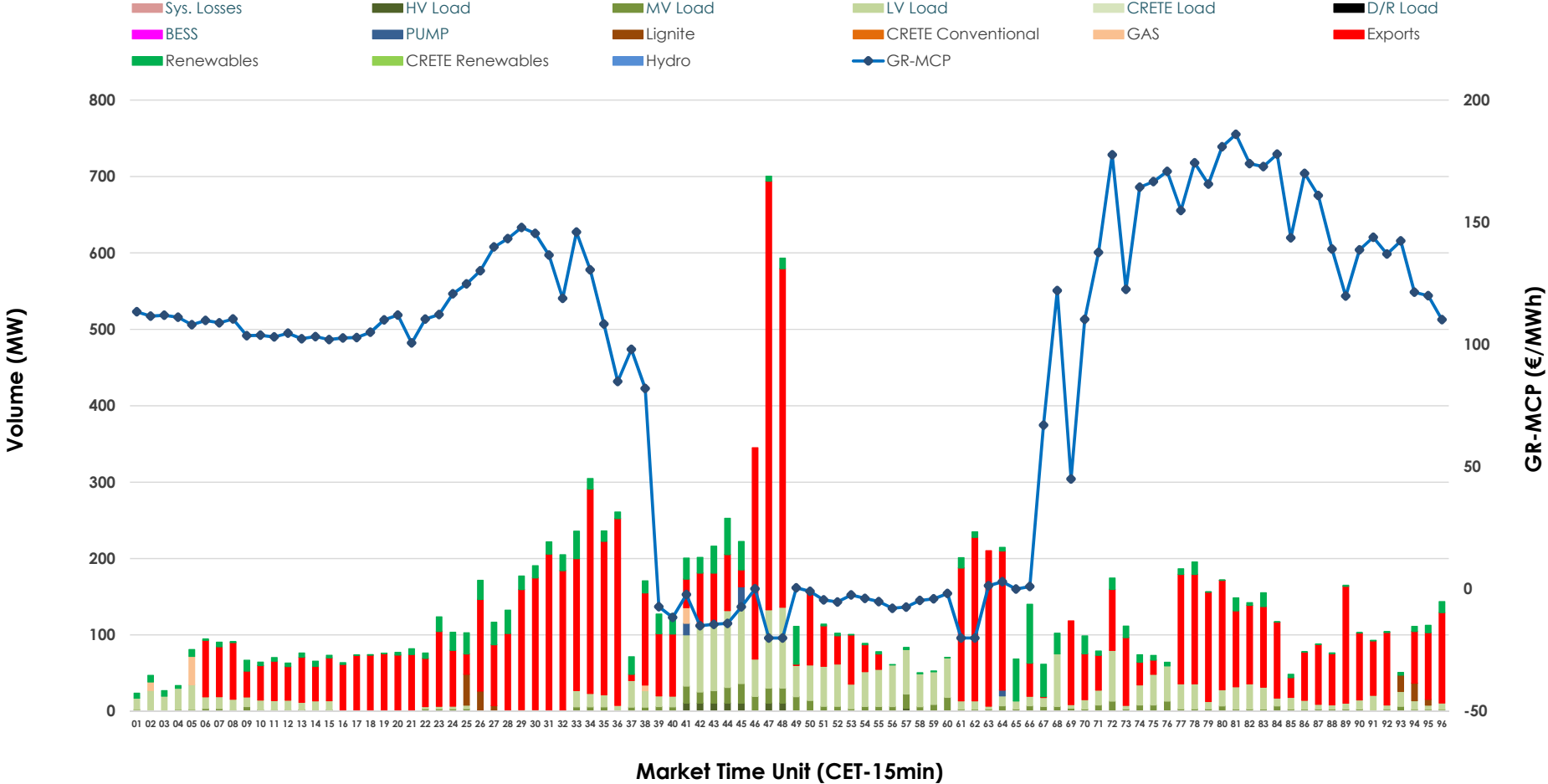


# IDA '2' Market Outlook

09.04.2026 IDA '2' Market - Sell



### 09.04.2026 IDA '2' Market - Buy



### GR Bidding Zone Weekly Figures

Delivery Day	03.04	04.04	05.04	06.04	07.04	08.04	09.04
	👉 -4%	👇 -52%	👇 -69%	👆 162%	👆 55%	👉 -2%	👆 14%
<b>Avg.MCP (€/MWh)</b>	129.15	62.39	19.53	51.16	79.13	77.38	88.00
<b>Max.MCP (€/MWh)</b>	218.30	150.46	113.90	198.89	199.05	195.91	185.99
<b>Min.MCP (€/MWh)</b>	36.29	-2.10	-50.56	-48.10	-24.00	-29.60	-20.01
	👉 -23%	👇 -45%	👆 36%	👉 27%	👉 -28%	👉 17%	👉 14%
<b>Tot.Vol(GWh)</b>	7.02	3.87	5.28	6.68	4.81	5.64	6.42

### Trades by Order Type

Delivery Day		03.04	04.04	05.04	06.04	07.04	08.04	09.04	
<b>Ord Price Type</b>		<b>Sell &amp; Buy Trades in (GWh) per Price Type</b>							<b>(%)</b>
<b>PPT</b>	(S)	0.000	0.000	0.000	0.000	0.000	0.000	0.000	0.00%
<b>HBD</b>	(S)	1.233	1.081	1.962	1.218	0.714	1.055	2.885	89.83%
<b>BLK</b>	(S)	0.000	0.000	0.000	0.000	0.000	0.000	0.000	0.00%
<b>CPL</b>	(S)	2.278	0.854	0.676	2.124	1.693	1.764	0.327	10.17%
<b>PPT</b>	(B)	0.000	0.000	0.000	0.000	0.000	0.000	0.000	0.00%
<b>HBD</b>	(B)	1.159	0.856	2.313	2.837	1.898	1.549	1.103	34.34%
<b>BLK</b>	(B)	0.000	0.000	0.000	0.000	0.000	0.000	0.000	0.00%
<b>CPL</b>	(B)	2.352	1.079	0.324	0.505	0.509	1.270	2.109	65.66%
		<b>Sell &amp; Buy Orders Traded per Price Type</b>							<b>(%)</b>
<b>PPT</b>	(S)	0	0	0	0	0	0	0	0.00%
<b>HBD</b>	(S)	389	241	399	262	196	262	393	100.00%
<b>BLK</b>	(S)	0	0	0	0	0	0	0	0.00%
<b>PPT</b>	(B)	0	0	0	0	0	0	0	0.00%
<b>HBD</b>	(B)	404	405	430	634	632	353	526	100.00%
<b>BLK</b>	(B)	0	0	0	0	0	0	0	0.00%

- MCP** Market Clearing Price (€/MWh)
- PPT** Priority Price-Taking
- HBD** Hybrid
- BLK** Block
- CPL** Market Coupling Flow

### Trade's Volume Mix

		Sell - MWh		Buy - MWh	
<b>Lignite</b>	(0.0%)	0	31		(1.0%)
<b>Crete Conv.</b>	(0.0%)	0	0		(0.0%)
<b>Gas</b>	(5.1%)	165	19		(0.6%)
<b>Hydro</b>	(11.8%)	379	0		(0.0%)
<b>Imports</b>	(10.2%)	327			
<b>RES</b>	(60.6%)	1,947	289		(9.0%)
<b>Crete RES</b>	(0.0%)	0	0		(0.0%)
<b>BESS</b>	(0.0%)	0	0		(0.0%)
<b>HV Load</b>	(1.1%)	35	24		(0.7%)
<b>MV Load</b>	(10.0%)	322	130		(4.0%)
<b>LV Load</b>	(1.1%)	36	597		(18.6%)
<b>Crete Load</b>	(0.0%)	0	0		(0.0%)
<b>Pumping</b>	(0.0%)	0	13		(0.4%)
<b>Exports</b>				2,109	(65.7%)
<b>Sys.Losses</b>	(0.0%)	0	0		(0.0%)
<b>D/R Load</b>	(0.0%)	0	0		(0.0%)

