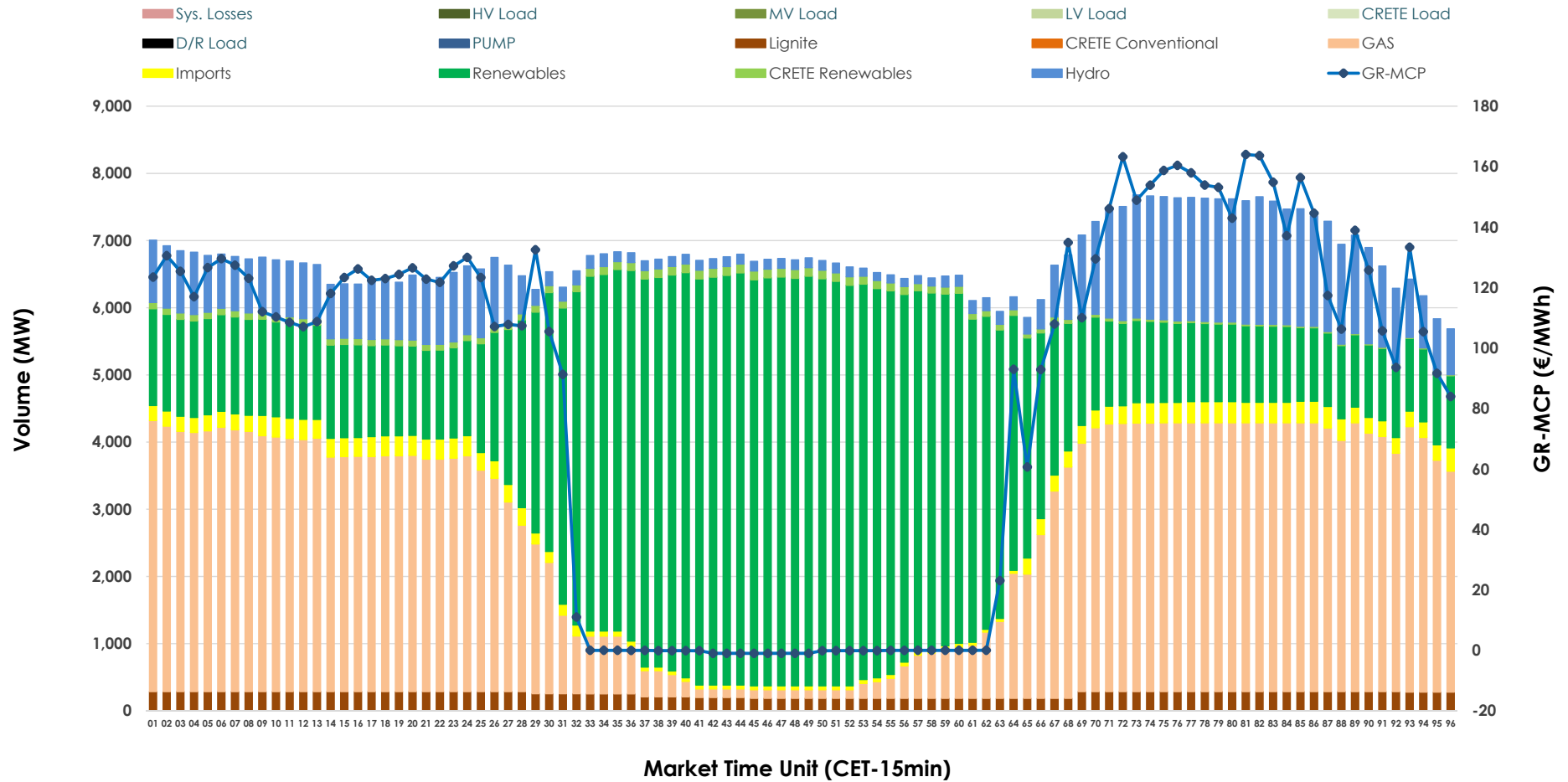


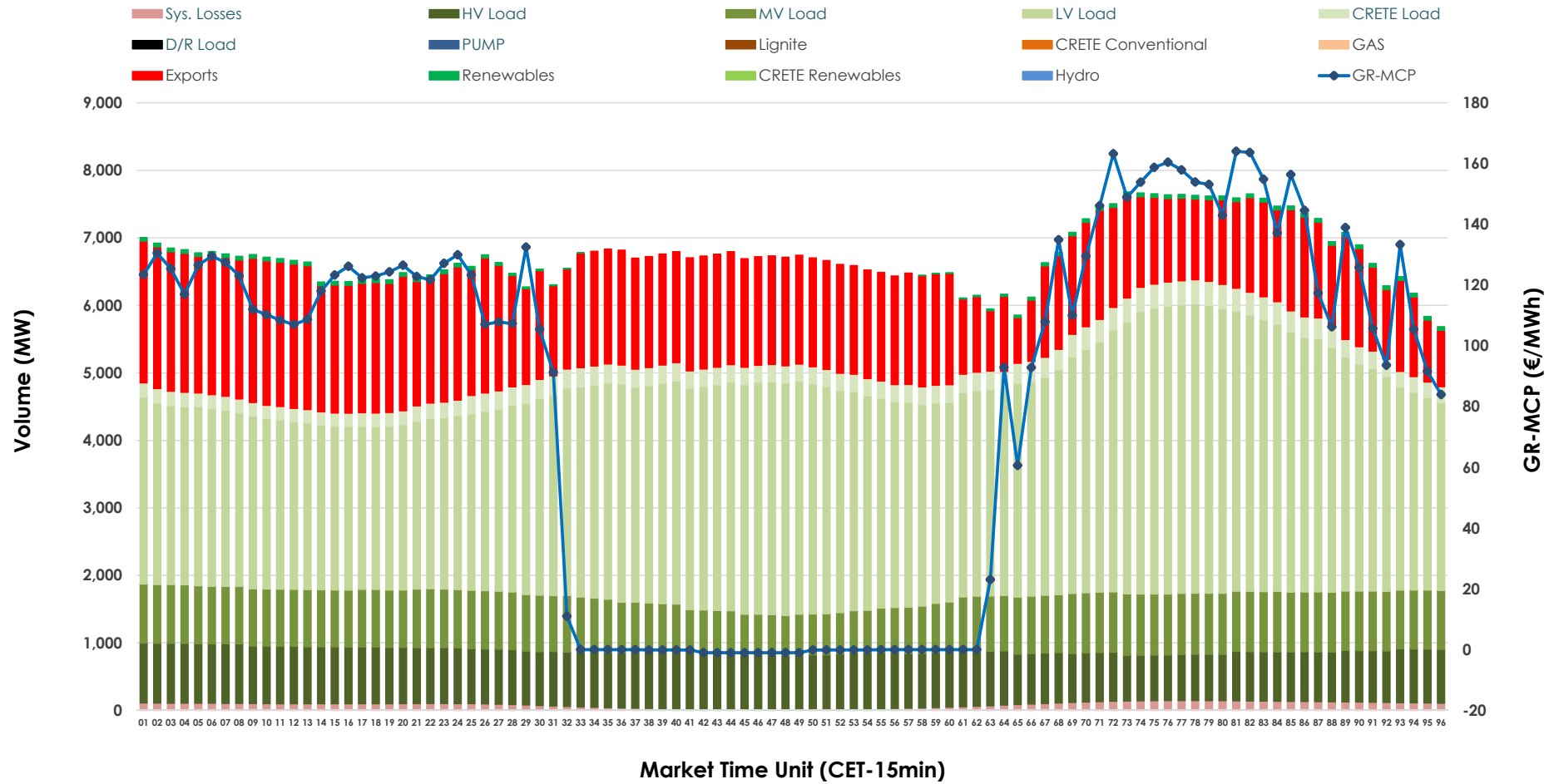


Day-Ahead Market Outlook

15.03.2026 Day-Ahead Market - Sell



15.03.2026 Day-Ahead Market - Buy



GR Bidding Zone Weekly Figures

Delivery Day	09.03	10.03	11.03	12.03	13.03	14.03	15.03
	➔ 1%	↗ 2%	↗ 10%	↘ 16%	↘ -17%	↘ -6%	↘ -1%
Avg.MCP (€/MWh)	82.94	84.90	93.35	108.24	89.55	84.39	83.39
Max.MCP (€/MWh)	247.48	253.89	240.49	247.52	215.45	183.48	164.03
Min.MCP (€/MWh)	-0.01	0.00	0.00	0.00	-0.10	-6.30	-1.01
	↗ 7%	↘ -2%	↘ -8%	↗ 5%	↘ 1%	↘ -4%	↘ -6%
Tot.Vol(GWh)	377.07	369.77	340.80	358.00	362.26	346.25	324.10

Trades by Order Type

Delivery Day		09.03	10.03	11.03	12.03	13.03	14.03	15.03	
Ord Price Type		Sell & Buy Trades in (GWh) per Price Type							(%)
PPT	(S)	103.168	92.307	79.824	79.190	88.806	81.903	74.010	45.67%
HBD	(S)	72.209	67.169	58.548	66.823	60.729	63.501	60.076	37.07%
BLK	(S)	13.159	25.386	26.866	29.533	31.267	27.207	27.936	17.24%
CPL	(S)	0.000	0.022	5.164	3.454	0.328	0.515	0.029	0.02%
PPT	(B)	13.216	12.949	12.840	13.965	14.237	14.168	12.939	7.98%
HBD	(B)	140.244	142.529	138.311	138.400	139.218	131.135	118.547	73.15%
BLK	(B)	0.000	0.000	0.000	0.000	0.000	0.000	0.000	0.00%
CPL	(B)	35.075	29.406	19.251	26.635	27.674	27.823	30.565	18.86%
		Sell & Buy Orders Traded per Price Type							(%)
PPT	(S)	2104	2050	1996	1979	1976	1847	1792	39.58%
HBD	(S)	2558	2512	2905	3046	2552	2666	2723	60.15%
BLK	(S)	4	13	10	14	14	12	12	0.27%
PPT	(B)	2354	2339	2312	2311	2364	2364	2341	37.03%
HBD	(B)	4001	4076	4033	3862	4085	3996	3981	62.97%
BLK	(B)	0	0	0	0	0	0	0	0.00%

MCP Market Clearing Price (€/MWh)
PPT Priority Price-Taking
HBD Hybrid
BLK Block
CPL Market Coupling Flow

Trade's Volume Mix

		Sell - MWh	Buy - MWh	
Lignite	(3.7%)	6,002	0	(0.0%)
Crete Conv.	(0.0%)	0	0	(0.0%)
Gas	(37.3%)	60,371	0	(0.0%)
Hydro	(11.6%)	18,834	0	(0.0%)
Imports	(2.9%)	4,766		
RES	(43.3%)	70,140	845	(0.5%)
Crete RES	(1.2%)	1,937	0	(0.0%)
HV Load	(0.0%)	0	19,164	(11.8%)
MV Load	(0.0%)	0	19,429	(12.0%)
LV Load	(0.0%)	0	75,934	(46.9%)
Crete Load	(0.0%)	0	6,406	(4.0%)
Pumping	(0.0%)	0	0	(0.0%)
Exports			38,222	(23.6%)
Sys.Losses	(0.0%)	0	2,051	(1.3%)
D/R Load	(0.0%)	0	0	(0.0%)

