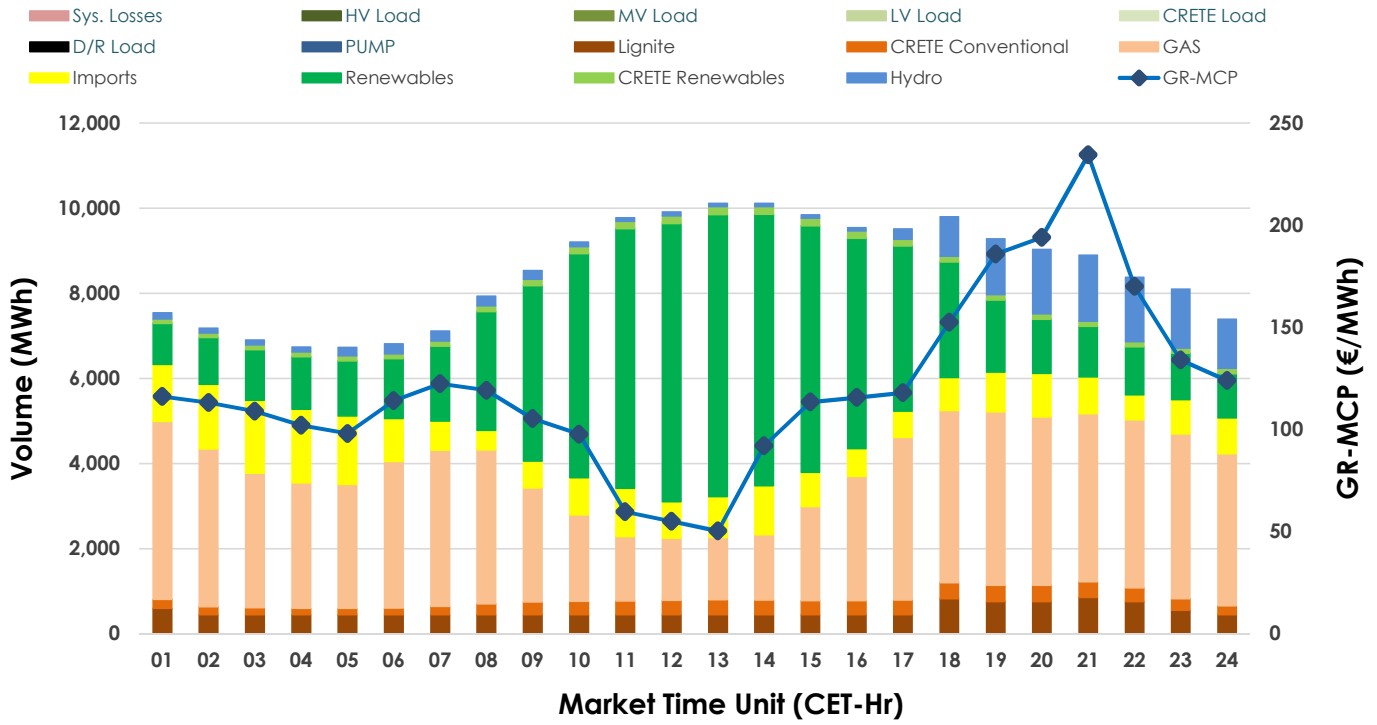


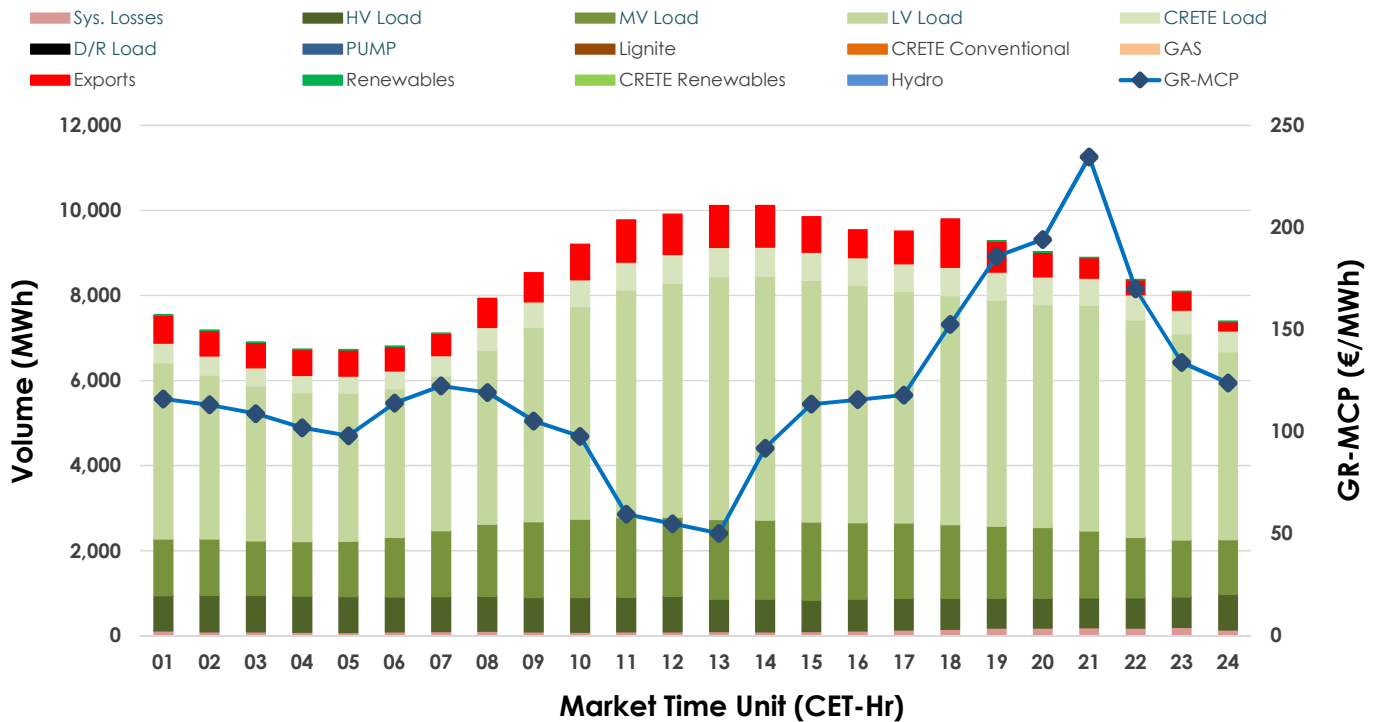


# Day-Ahead Market Outlook

## 09.08.2024 Day-Ahead Market - Sell



## 09.08.2024 Day-Ahead Market - Buy



## GR Bidding Zone Weekly Figures

Delivery Day	03.08	04.08	05.08	06.08	07.08	08.08	09.08
	↘-3%	↗8%	↗12%	↘-9%	↘-3%	↗4%	↘-9%
Avg.MCP (€/MWh)	119.04	128.47	143.65	131.27	127.53	133.23	120.66
Max.MCP (€/MWh)	187.97	220.00	313.14	347.47	330.00	338.47	234.50
Min.MCP (€/MWh)	60.01	54.80	85.23	41.85	53.55	56.97	50.24
	↘-6%	↘-5%	↗8%	⇒0%	↗1%	↗1%	↘-2%
Tot.Vol(GWh)	391.18	373.41	404.84	406.43	411.76	416.12	408.83

## Trades by Order Type

Delivery Day	03.08	04.08	05.08	06.08	07.08	08.08	09.08
Order P.T	Sell & Buy Trades in (GWh) per Price Type						
PPT (S)	67.105	67.285	72.547	70.583	68.248	74.902	84.039
HBD (S)	57.541	56.013	62.163	55.034	64.255	65.102	61.060
BLK (S)	47.217	36.192	52.188	54.269	54.099	56.720	46.427
CPL (S)	23.727	27.214	15.524	23.330	19.279	11.336	12.892
PPT (B)	19.327	17.578	19.506	20.467	20.478	19.960	20.370
HBD (B)	171.783	159.661	174.511	177.561	175.070	175.875	173.697
BLK (B)							
CPL (B)	4.480	9.465	8.405	5.187	10.333	12.226	10.351
Order P.T	Sell & Buy Orders Traded per Price Type						
PPT (S)	716	745	741	739	726	687	689
HBD (S)	967	898	1025	1007	981	969	936
BLK (S)	273	201	268	278	278	300	238
PPT (B)	616	612	603	604	625	620	612
HBD (B)	1201	1148	1106	1136	1153	1189	1183
BLK (B)							

<b>MCP</b>	Market Clearing Price (€/MWh)
<b>PPT</b>	Priority Price-Taking
<b>HBD</b>	Hybrid
<b>BLK</b>	Block
<b>CPL</b>	Market Coupling Flow

## Trade's Volume Mix

	Sell - MWh	Buy - MWh	
Lignite	(6.2%) 12,670	0	(0.0%)
Crete Conv.	(3.3%) 6,845	0	(0.0%)
Gas	(36.5%) 74,711	0	(0.0%)
Hydro	(5.7%) 11,731	0	(0.0%)
Imports	(11.5%) 23,584		
RES	(35.0%) 71,529	117	(0.1%)
Crete RES	(1.6%) 3,347	0	(0.0%)
HV Load	(0.0%) 0	18,797	(9.2%)
MV Load	(0.0%) 0	38,329	(18.8%)
LV Load	(0.0%) 0	113,927	(55.7%)
Crete Load	(0.0%) 0	13,792	(6.7%)
Pumping	(0.0%) 0	0	(0.0%)
Exports		16,456	(8.1%)
Sys.Losses	(0.0%) 0	3,000	(1.5%)
D/R Load	(0.0%) 0	0	(0.0%)

