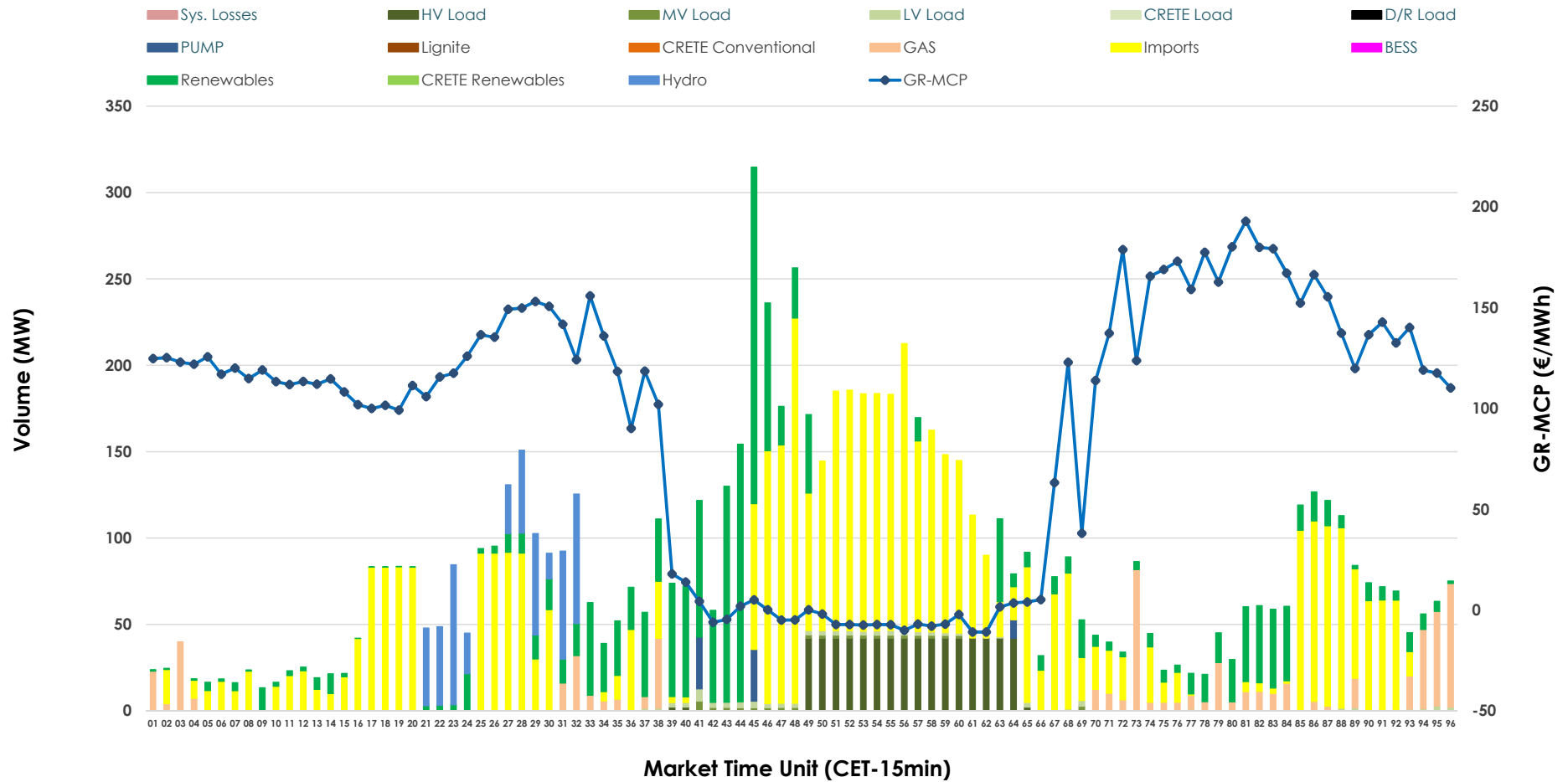


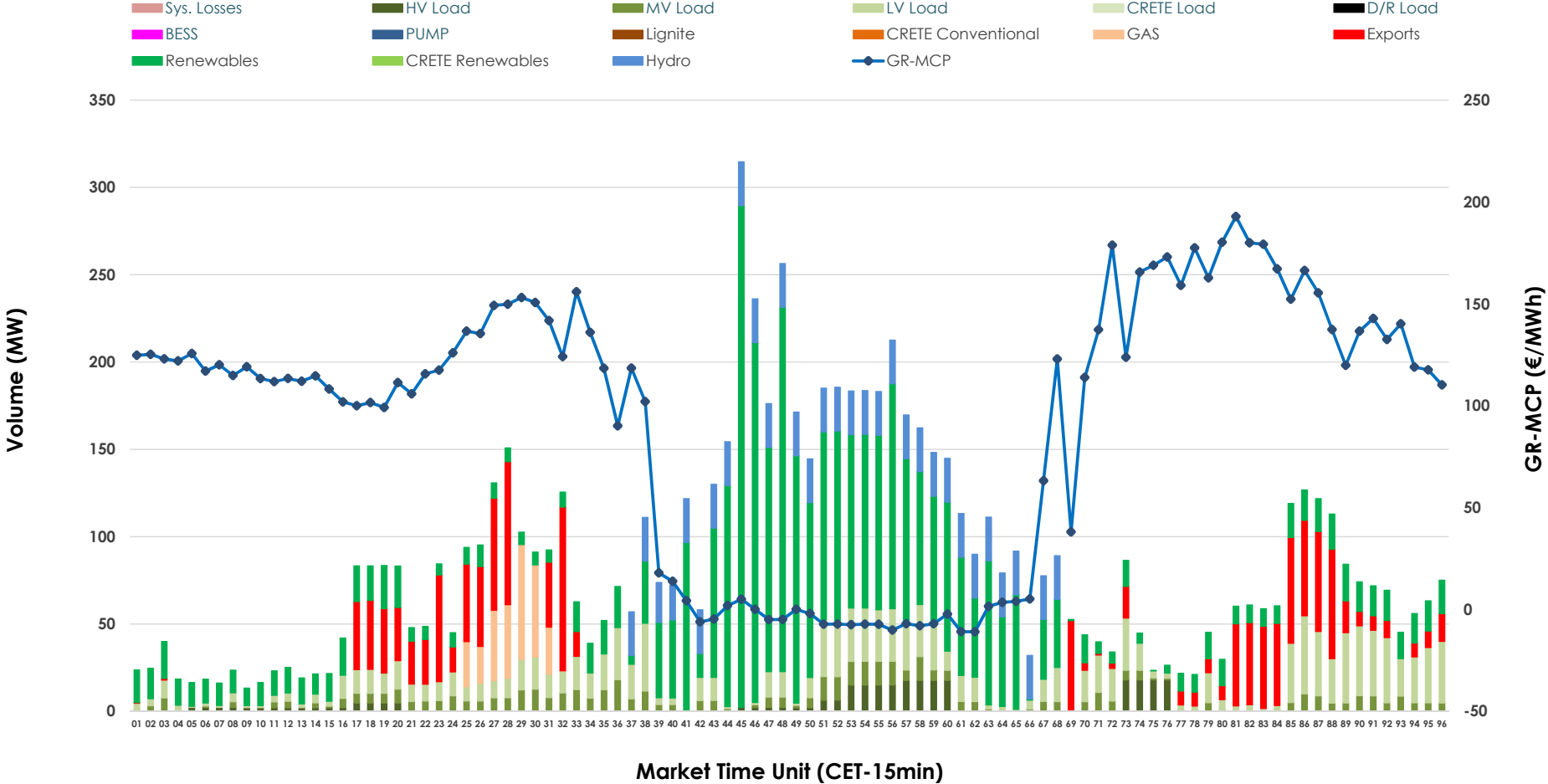


IDA '1' Market Outlook

09.04.2026 IDA '1' Market - Sell



09.04.2026 IDA '1' Market - Buy



GR Bidding Zone Weekly Figures

Delivery Day	03.04	04.04	05.04	06.04	07.04	08.04	09.04
	👇 -5%	👇 -46%	👇 -56%	👆 116%	👆 24%	👇 -7%	👆 20%
Avg.MCP (€/MWh)	128.53	69.11	30.63	66.14	82.25	76.84	92.32
Max.MCP (€/MWh)	216.28	185.47	138.01	183.21	201.50	189.41	192.88
Min.MCP (€/MWh)	14.27	-7.10	-50.00	-34.93	-19.78	-17.84	-10.96
	👆 2%	👇 -8%	👆 20%	👇 -33%	👆 -1%	👇 -1%	👆 12%
Tot.Vol(GWh)	5.11	4.69	5.62	3.78	3.75	3.70	4.14

Trades by Order Type

Delivery Day		03.04	04.04	05.04	06.04	07.04	08.04	09.04	
Ord Price Type		Sell & Buy Trades in (GWh) per Price Type							(%)
PPT	(S)	0.000	0.000	0.000	0.000	0.000	0.000	0.000	0.00%
HBD	(S)	1.416	1.713	0.741	0.730	1.032	1.045	0.954	46.11%
BLK	(S)	0.000	0.000	0.000	0.000	0.000	0.000	0.000	0.00%
CPL	(S)	1.137	0.629	2.069	1.158	0.844	0.804	1.116	53.89%
PPT	(B)	0.000	0.000	0.000	0.000	0.000	0.000	0.000	0.00%
HBD	(B)	1.302	1.153	2.734	1.496	1.451	1.672	1.754	84.72%
BLK	(B)	0.000	0.000	0.000	0.000	0.000	0.000	0.000	0.00%
CPL	(B)	1.251	1.190	0.077	0.392	0.424	0.177	0.316	15.28%
		Sell & Buy Orders Traded per Price Type							(%)
PPT	(S)	0	0	0	0	0	0	0	0.00%
HBD	(S)	381	412	120	164	122	247	208	100.00%
BLK	(S)	0	0	0	0	0	0	0	0.00%
PPT	(B)	0	0	0	0	0	0	0	0.00%
HBD	(B)	586	788	412	449	865	778	840	100.00%
BLK	(B)	0	0	0	0	0	0	0	0.00%

- MCP** Market Clearing Price (€/MWh)
- PPT** Priority Price-Taking
- HBD** Hybrid
- BLK** Block
- CPL** Market Coupling Flow

Trade's Volume Mix

	Sell - MWh	Buy - MWh	
Lignite	0	0	(0.0%)
Crete Conv.	0	0	(0.0%)
Gas	156	69	(3.3%)
Hydro	120	198	(9.6%)
Imports	1,116		
RES	457	937	(45.3%)
Crete RES	0	0	(0.0%)
BESS	0	0	(0.0%)
HV Load	170	69	(3.3%)
MV Load	11	132	(6.4%)
LV Load	23	349	(16.9%)
Crete Load	0	0	(0.0%)
Pumping	18	0	(0.0%)
Exports		316	(15.3%)
Sys.Losses	0	0	(0.0%)
D/R Load	0	0	(0.0%)

