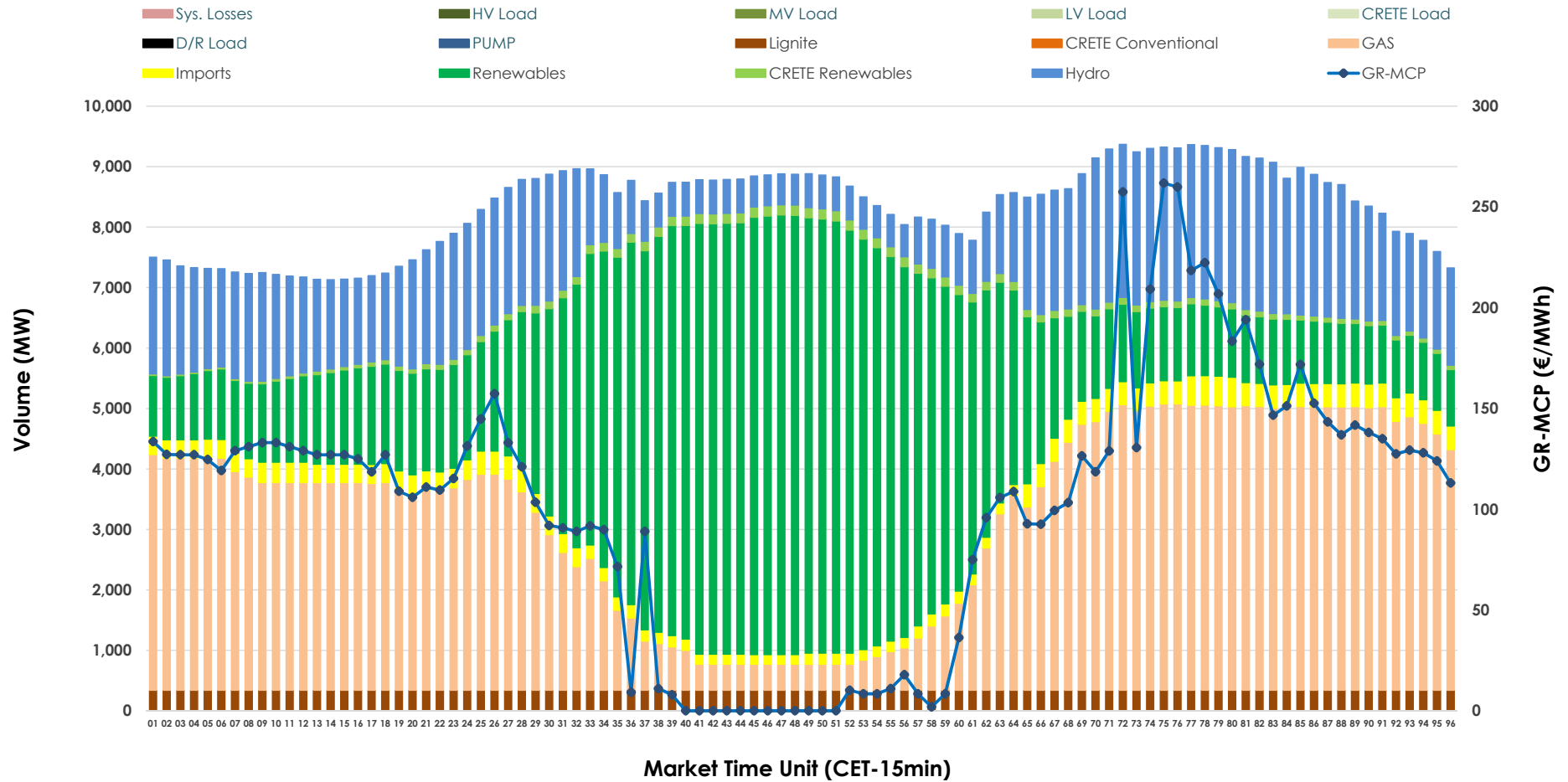


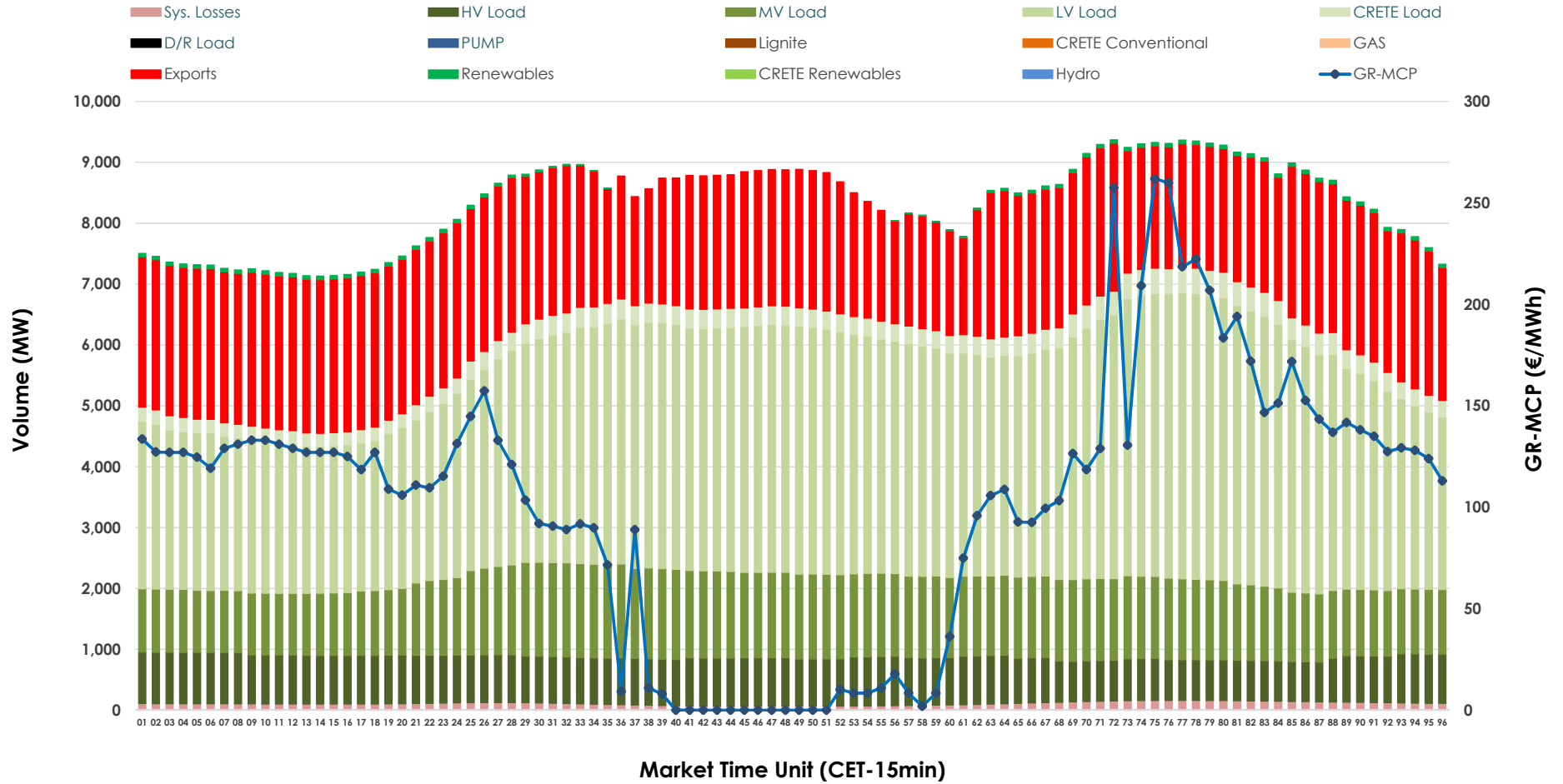


# Day-Ahead Market Outlook

04.03.2026 Day-Ahead Market - Sell



### 04.03.2026 Day-Ahead Market - Buy



### GR Bidding Zone Weekly Figures

Delivery Day	26.02	27.02	28.02	01.03	02.03	03.03	04.03
	↗ 5%	↗ 15%	↘ -21%	↘ -23%	↗ 100%	↗ 32%	↘ -4%
<b>Avg.MCP (€/MWh)</b>	57.09	65.66	52.12	40.11	80.04	105.79	102.04
<b>Max.MCP (€/MWh)</b>	129.65	146.17	105.16	112.24	205.76	224.94	261.83
<b>Min.MCP (€/MWh)</b>	-0.01	0.01	-0.04	-1.03	0.00	9.90	0.01
	↗ 4%	↘ -1%	↘ -7%	↘ -1%	↗ 3%	↗ 3%	↗ 2%
<b>Tot.Vol(GWh)</b>	403.23	399.06	371.47	369.53	381.72	391.40	400.49

### Trades by Order Type

Delivery Day		26.02	27.02	28.02	01.03	02.03	03.03	04.03	
<b>Ord Price Type</b>		<b>Sell &amp; Buy Trades in (GWh) per Price Type</b>							<b>(%)</b>
<b>PPT</b>	(S)	115.405	107.369	113.204	110.143	97.023	93.316	92.023	45.96%
<b>HBD</b>	(S)	64.030	66.550	56.490	60.318	64.656	66.501	72.545	36.23%
<b>BLK</b>	(S)	22.178	25.283	16.041	14.306	27.861	33.700	35.572	17.76%
<b>CPL</b>	(S)	0.000	0.327	0.000	0.000	1.320	2.182	0.106	0.05%
<b>PPT</b>	(B)	13.008	12.878	13.841	12.531	12.663	12.979	12.356	6.17%
<b>HBD</b>	(B)	148.228	150.080	138.903	130.663	144.885	144.065	145.411	72.62%
<b>BLK</b>	(B)	0.000	0.000	0.000	0.000	0.000	0.000	0.000	0.00%
<b>CPL</b>	(B)	40.377	36.571	32.991	41.573	33.312	38.654	42.479	21.21%
		<b>Sell &amp; Buy Orders Traded per Price Type</b>							<b>(%)</b>
<b>PPT</b>	(S)	2414	2382	2360	2304	2276	2284	2119	41.55%
<b>HBD</b>	(S)	2446	2859	2414	2254	2788	2973	2968	58.20%
<b>BLK</b>	(S)	8	12	7	5	12	13	13	0.25%
<b>PPT</b>	(B)	2237	2233	2317	2301	2187	2194	2196	35.45%
<b>HBD</b>	(B)	4113	4005	4039	4038	3969	3908	3999	64.55%
<b>BLK</b>	(B)	0	0	0	0	0	0	0	0.00%

**MCP** Market Clearing Price (€/MWh)  
**PPT** Priority Price-Taking  
**HBD** Hybrid  
**BLK** Block  
**CPL** Market Coupling Flow

### Trade's Volume Mix

		Sell - MWh	Buy - MWh	
<b>Lignite</b>	(4.1%)	8,160	0	(0.0%)
<b>Crete Conv.</b>	(0.0%)	0	0	(0.0%)
<b>Gas</b>	(35.4%)	70,869	0	(0.0%)
<b>Hydro</b>	(18.9%)	37,848	0	(0.0%)
<b>Imports</b>	(3.6%)	7,232		
<b>RES</b>	(36.7%)	73,552	881	(0.4%)
<b>Crete RES</b>	(1.3%)	2,585	0	(0.0%)
<b>HV Load</b>	(0.0%)	0	18,358	(9.2%)
<b>MV Load</b>	(0.0%)	0	30,500	(15.2%)
<b>LV Load</b>	(0.0%)	0	85,880	(42.9%)
<b>Crete Load</b>	(0.0%)	0	7,330	(3.7%)
<b>Pumping</b>	(0.0%)	0	0	(0.0%)
<b>Exports</b>			54,663	(27.3%)
<b>Sys.Losses</b>	(0.0%)	0	2,633	(1.3%)
<b>D/R Load</b>	(0.0%)	0	0	(0.0%)

