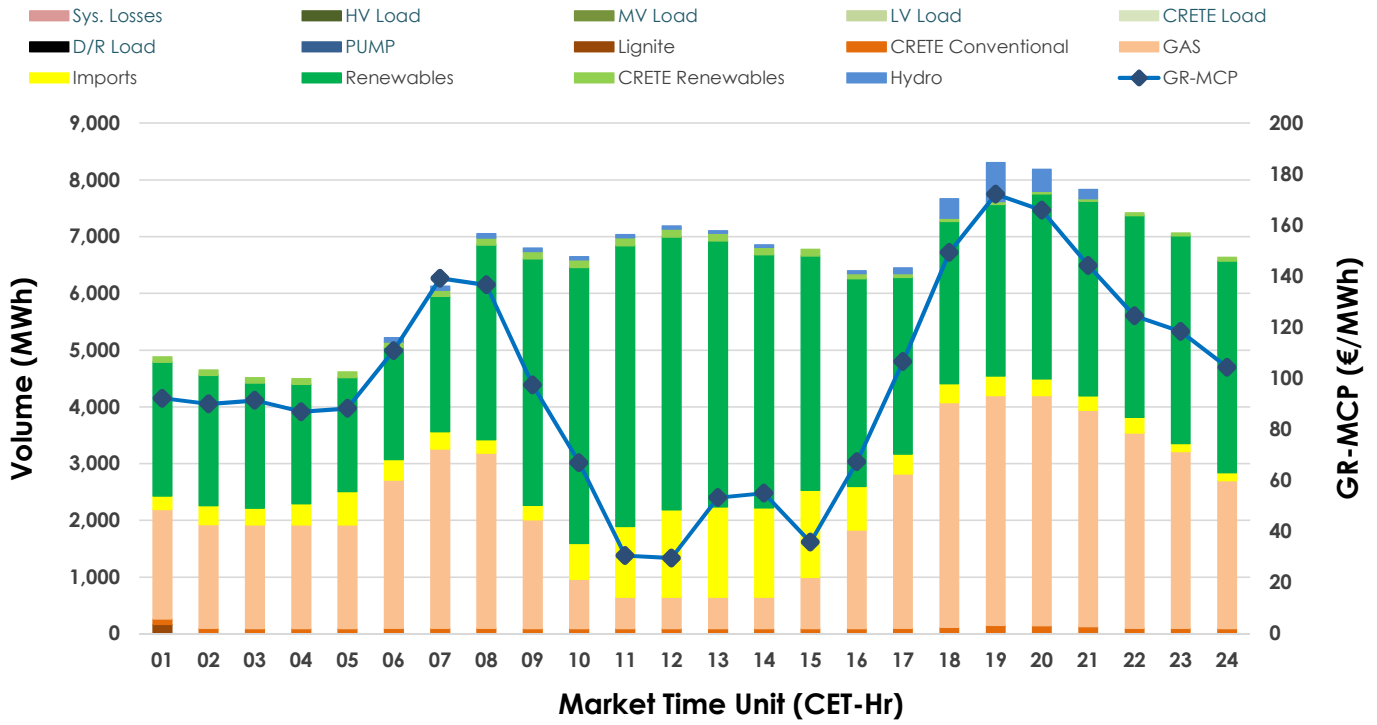
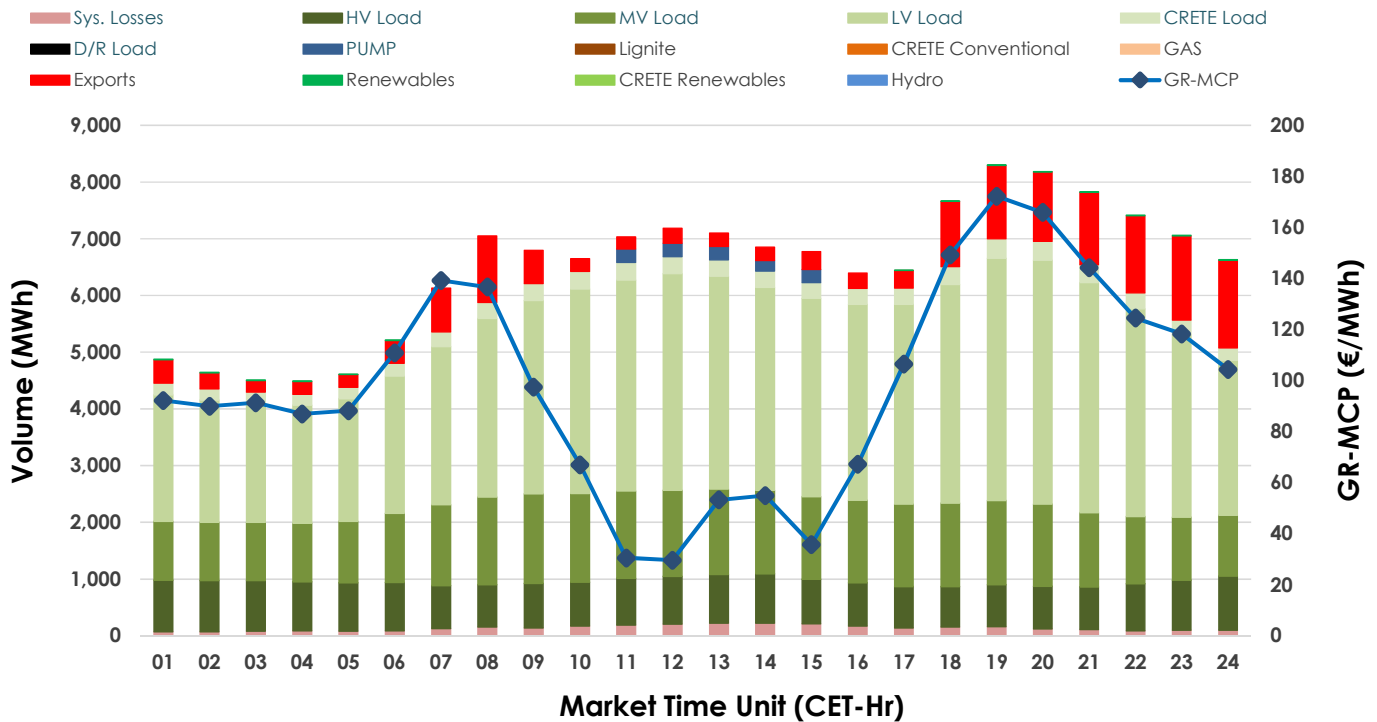


## 18.03.2025 Day-Ahead Market - Sell



## 18.03.2025 Day-Ahead Market - Buy



## GR Bidding Zone Weekly Figures

Delivery Day	12.03	13.03	14.03	15.03	16.03	17.03	18.03
	↗ 10%	↘ -25%	↗ 9%	↘ -15%	↘ -8%	↗ 27%	↗ 7%
Avg.MCP (€/MWh)	112.72	84.35	91.80	78.39	72.26	91.49	98.21
Max.MCP (€/MWh)	177.87	173.47	152.92	145.10	140.00	171.58	172.19
Min.MCP (€/MWh)	55.00	0.04	7.88	1.50	4.45	25.00	29.65
	↗ 2%	↘ -2%	↘ -10%	↘ -3%	↘ -7%	↗ 13%	↗ 4%
Tot.Vol(GWh)	333.00	327.48	296.18	288.55	267.42	301.06	311.74

## Trades by Order Type

Delivery Day	12.03	13.03	14.03	15.03	16.03	17.03	18.03
Order P.T	Sell & Buy Trades in (GWh) per Price Type						
PPT (S)	71.311	71.332	56.502	60.426	55.689	64.967	67.689
HBD (S)	66.452	64.690	58.520	59.767	52.823	63.568	58.506
BLK (S)	28.739	27.673	28.802	23.584	15.778	18.070	22.703
CPL (S)		0.047	4.267	0.496	9.421	3.924	6.970
PPT (B)	16.829	16.664	15.558	15.552	14.555	14.320	12.446
HBD (B)	132.559	137.232	128.259	119.794	114.678	125.848	134.078
BLK (B)							
CPL (B)	17.114	9.846	4.274	8.928	4.478	10.361	9.343
Order P.T	Sell & Buy Orders Traded per Price Type						
PPT (S)	365	326	349	381	375	375	403
HBD (S)	810	746	808	730	733	775	904
BLK (S)	140	130	142	132	89	98	122
PPT (B)	773	837	828	800	779	722	629
HBD (B)	1384	1387	1317	1402	1418	1359	1221
BLK (B)							

<b>MCP</b>	Market Clearing Price (€/MWh)
<b>PPT</b>	Priority Price-Taking
<b>HBD</b>	Hybrid
<b>BLK</b>	Block
<b>CPL</b>	Market Coupling Flow

## Trade's Volume Mix

	Sell - MWh	Buy - MWh	
Lignite	(0.1%) 165	0	(0.0%)
Crete Conv.	(1.5%) 2,351	0	(0.0%)
Gas	(34.4%) 53,642	0	(0.0%)
Hydro	(1.4%) 2,208	0	(0.0%)
Imports	(9.0%) 14,009		
RES	(52.1%) 81,274	125	(0.1%)
Crete RES	(1.4%) 2,219	0	(0.0%)
HV Load	(0.0%) 0	19,598	(12.6%)
MV Load	(0.0%) 0	32,019	(20.5%)
LV Load	(0.0%) 0	77,538	(49.7%)
Crete Load	(0.0%) 0	6,455	(4.1%)
Pumping	(0.0%) 0	1,124	(0.7%)
Exports		15,690	(10.1%)
Sys.Losses	(0.0%) 0	3,318	(2.1%)
D/R Load	(0.0%) 0	0	(0.0%)

